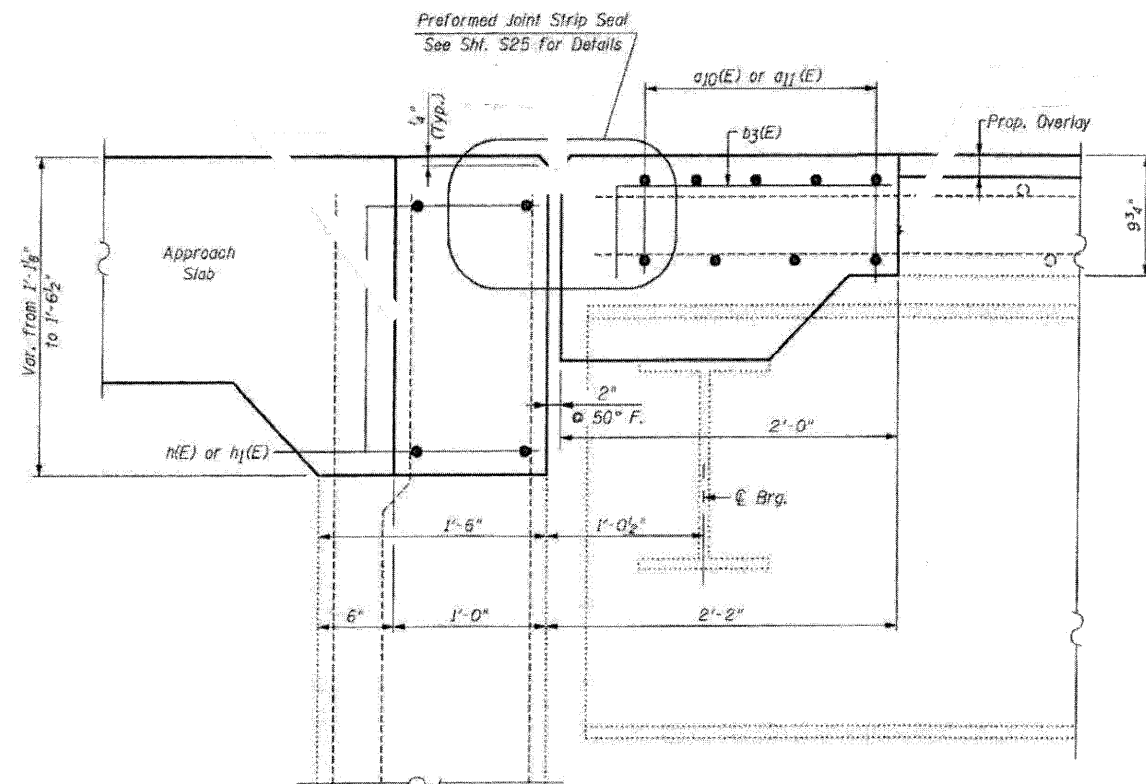


EXISTING
SECTION B-B
NORTHBOUND STRUCTURE-SOUTH ABUTMENT



PROPOSED
SECTION B-B
NORTHBOUND STRUCTURE-SOUTH ABUTMENT

LEGEND:
 Concrete Removal

NOTE:
 For Bar Splicer Assembly Details, See Sht. S24

FILE NAME: 0528048-64E97-10-S-Abut-NB
 PLOT DATE: 3/29/2010
 PLOT SCALE: 58.0000 X 1/8" IN.

CHRISTIAN-ROGE & ASSOCIATES, INC.
 ENGINEERS-PLANNERS-SURVEYORS
 211 WEST WACKER DRIVE
 CHICAGO, ILLINOIS 60606
 PHONE: (312)372-2023 FAX: (312)372-5274

DESIGNED -	B.N.S./J.C.N.	REVISED -	
DRAWN -	D.L./F.M.	REVISED -	
CHECKED -	B.N.S./J.C.N.	REVISED -	
DATE -	MARCH, 2010	REVISED -	

STATE OF ILLINOIS
DEPARTMENT OF TRANSPORTATION

JOINT RECONSTRUCTION DETAILS AT SOUTH ABUTMENT
NORTHBOUND STRUCTURE
I-39 OVER STEWARD CREEK
S.N. 052-0049

SCALE:	SHEET NO. 510 OF 526 SHEETS	STA.	TO STA.	F.A.T. RTE.	SECTION	COUNTY	TOTAL SHEETS	SHEET NO.
				39	1103-1, 103-2/RS	LEE	313	173
				FED. ROAD DIST. NO.		ILLINOIS FED. AID PROJECT		
				CONTRACT NO. 64E97				