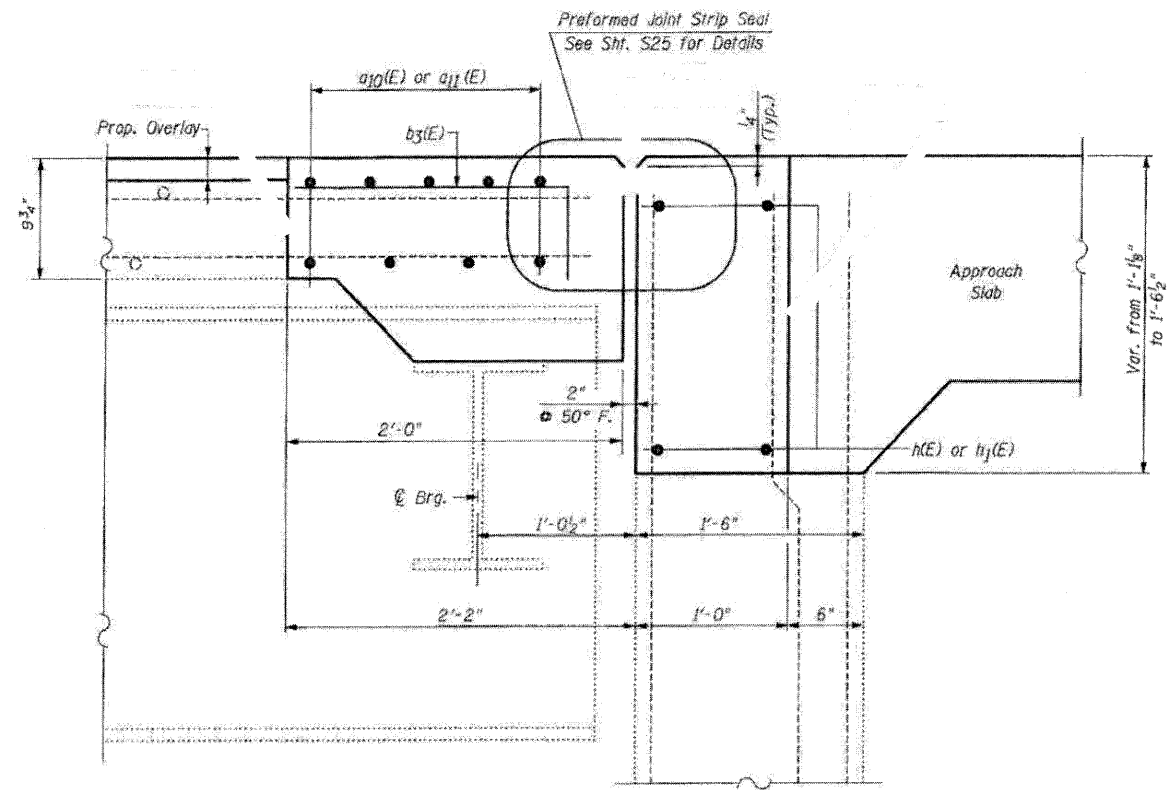


**EXISTING**

**SECTION B-B**

**NORTHBOUND STRUCTURE-NORTH ABUTMENT**

**LEGEND:**  
 Concrete Removal



**PROPOSED**

**SECTION B-B**

**NORTHBOUND STRUCTURE-NORTH ABUTMENT**

**NOTE:**  
 For Bar Splicer Assembly Details, See Sht. S24.

FILE NAME: 8528048-64E97-12-N-Abut-NB.dwg  
 PLOT DATE: 3/29/2010  
 PLOT SCALE: 5/8"=1'-0"

**CHRISTIAN-RODGE & ASSOCIATES, INC.**  
 ENGINEERS-PLANNERS-SURVEYORS  
 211 WEST WACKER DRIVE  
 CHICAGO, ILLINOIS 60606  
 PHONE: (312)372-2023 FAX: (312)372-6274

DESIGNED - B.N.S./J.C.N.	REVISED -
DRAWN - D.L./F.M.	REVISED -
CHECKED - B.N.S./J.C.N.	REVISED -
DATE - MARCH, 2010	REVISED -

**STATE OF ILLINOIS**  
**DEPARTMENT OF TRANSPORTATION**

**JOINT RECONSTRUCTION DETAILS AT NORTH ABUTMENT**  
**NORTHBOUND STRUCTURE**  
**I-39 OVER STEWARD CREEK**  
**S.N. 052-0049**

F.A.I. RTE.	SECTION	COUNTY	TOTAL SHEETS	SHEET NO.
39	103-1, 103-2/RS	LEE	313	176
FEB. ROAD DIST. NO. [ILLINOIS] FED. AID PROJECT			CONTRACT NO. 64E97	

SCALE: SHEET NO. S12 OF S26 SHEETS STA. TO STA.