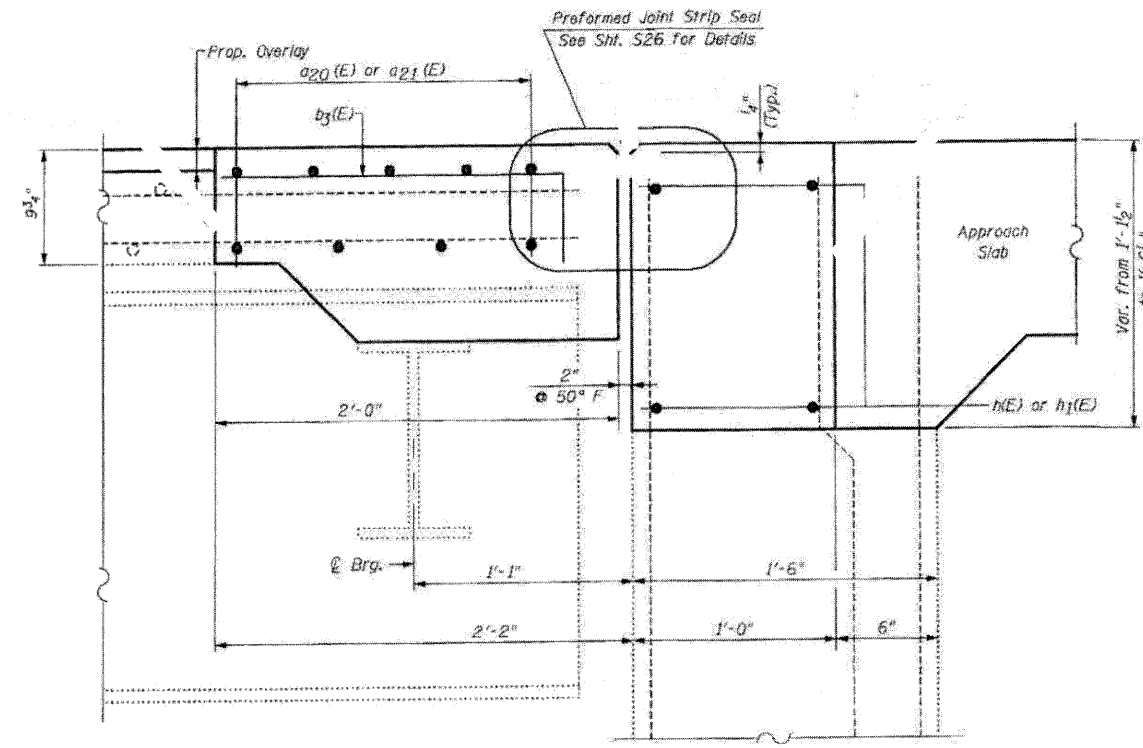


EXISTING

SECTION B-B

SOUTHBOUND STRUCTURE-NORTH ABUTMENT

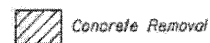


PROPOSED

SECTION B-B

SOUTHBOUND STRUCTURE-NORTH ABUTMENT

LEGEND:



NOTE:
For Bar Splicer Assembly Details, See Sht. S25

FILE NAME = R528046-64E97-88-N-Abut-58-etc
 PLOT DATE = 3/29/2018
 PLOT SCALE = 50.0000 1/1 IN.

CHRISTIAN-ROGE & ASSOCIATES INC.
 ENGINEERS-PLANNERS-SURVEYORS
 211 WEST WACKER DRIVE
 CHICAGO, ILLINOIS 60606
 PHONE: (312)372-2023 FAX: (312)372-5274

DESIGNED - B.N.S./J.C.N.
 DRAWN - D.L./F.M.
 CHECKED - B.N.S./J.C.N.
 DATE - MARCH, 2010

REVISED -
 REVISED -
 REVISED -
 REVISED -

STATE OF ILLINOIS
DEPARTMENT OF TRANSPORTATION

JOINT RECONSTRUCTION DETAILS AT NORTH ABUTMENT
SOUTHBOUND STRUCTURE
I-39 OVER B.N.R.R.

S.N. 052-0046

SCALE: SHEET NO. 58 OF 527 SHEETS STA. TO STA.

F.A.I. RTE.	SECTION	COUNTY	TOTAL SHEETS	SHEET NO.
39	1103-1, 103-2RS	LEE	313	197
FED. ROAD DIST. NO. ILLINOIS FED. AID PROJECT			CONTRACT NO. 64E97	