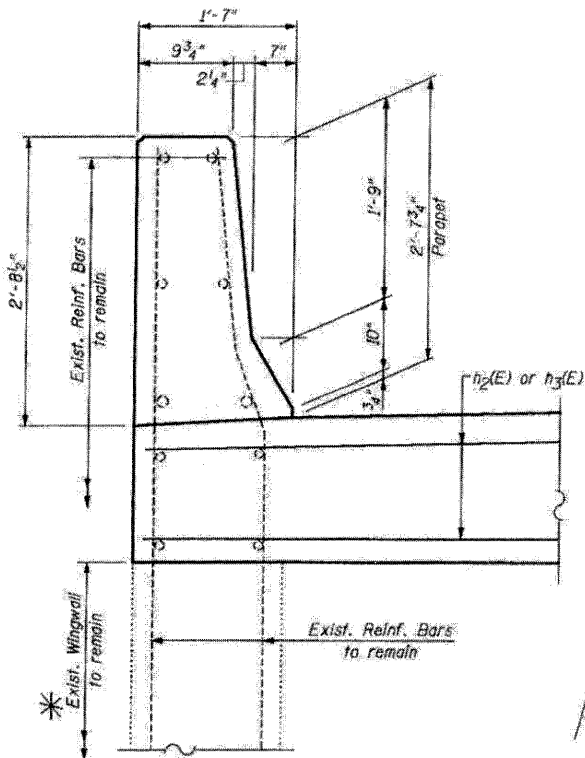
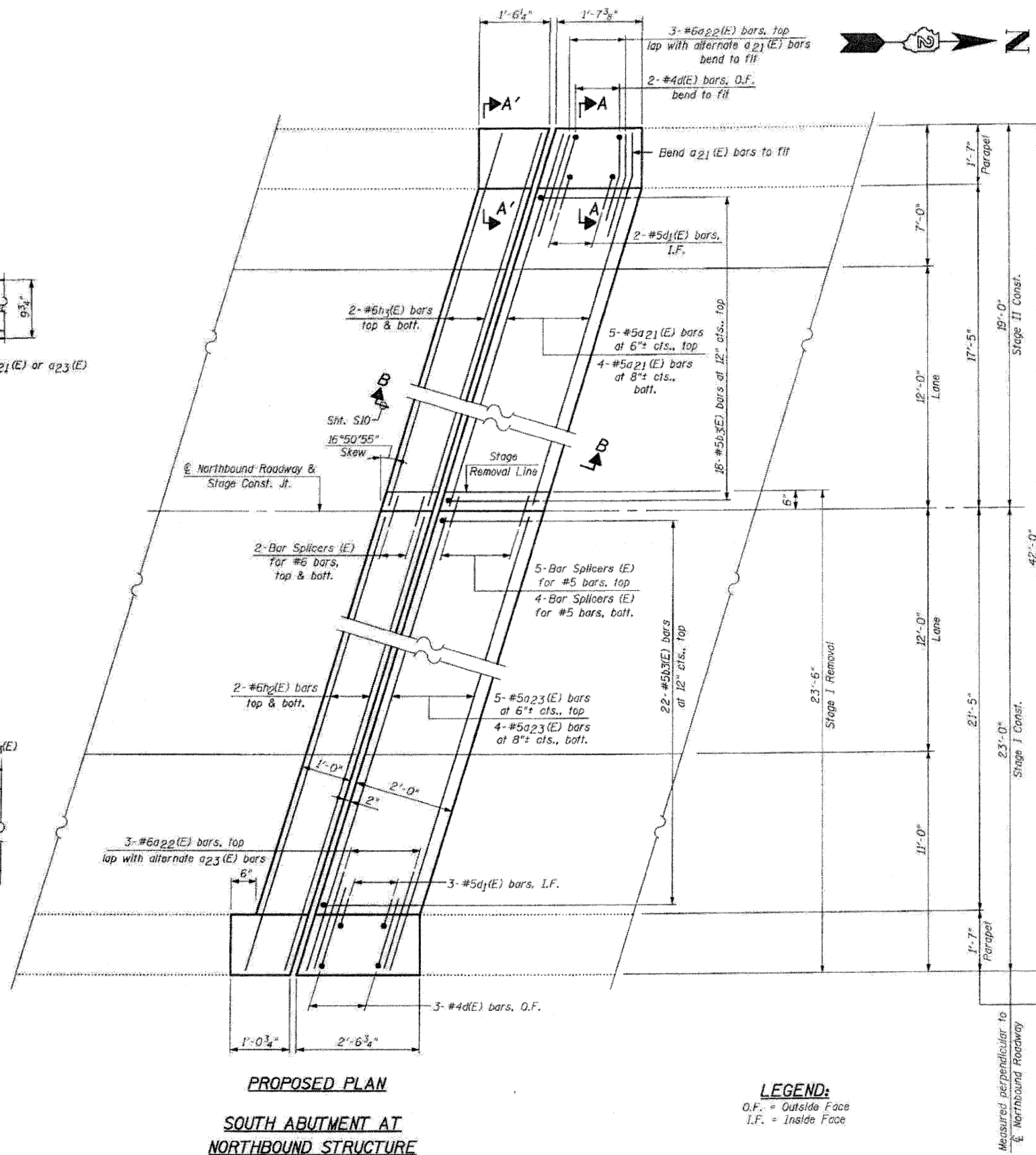


SECTION A-A



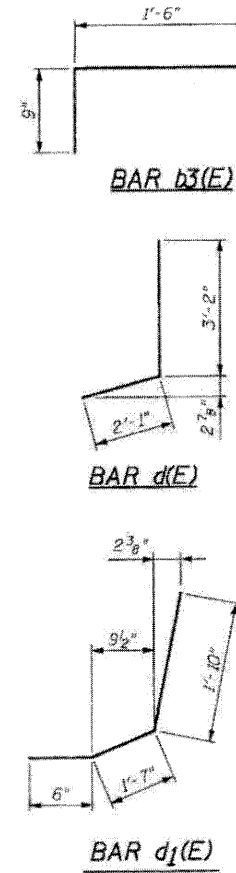
SECTION A'-A'

* Remove portion of Wingwall as required at corners to allow clearance for new deck overhang.
Cut Reinforcement Bars flush and seal surface with epoxy. Cost included with Concrete Removal.



PROPOSED PLAN
SOUTH ABUTMENT AT
NORTHBOUND STRUCTURE

LEGEND:
O.F. = Outside Face
I.F. = Inside Face



BILL OF MATERIAL				
Bar	No.	Size	Length	Shape
a21(E)	9	#5	19'-4"	—
a22(E)	6	#6	4'-0"	—
a23(E)	9	#5	23'-6"	—
b3(E)	40	#5	2'-3"	┌
d(E)	5	#4	5'-3"	└
d1(E)	5	#5	3'-11"	└
h2(E)	4	#6	23'-6"	—
h3(E)	4	#6	19'-4"	—
Reinforcement Bars, Epoxy Coated	Pound		830	
Concrete Removal	Cu. Yd.		6.6	
Concrete Superstructure	Cu. Yd.		7.4	
Bar Splicers	Each		13	
Protective Coat	Sq. Yd.		3	

Quantity for Top & Inside Face of Reconstructed Parapets

FILE NAME = 0520046-64E97-09-S-Abut-NB
PLOT DATE = 3/29/2010
PLOT SCALE = 5/8"=1'-0"

CHRISTIAN-RODGE & ASSOCIATES, INC.
ENGINEERS-PLANNERS-SURVEYORS
211 WEST WACKER DRIVE
CHICAGO, ILLINOIS 60606
PHONE: (312)372-2024 FAX: (312)372-5274

DESIGNED - B.N.S./J.C.N.
DRAWN - D.L./F.M.
CHECKED - B.N.S./J.C.N.
DATE - MARCH, 2010

REVISED -
REVISED -
REVISED -
REVISED -

STATE OF ILLINOIS
DEPARTMENT OF TRANSPORTATION

JOINT RECONSTRUCTION AT SOUTH ABUTMENT
NORTHBOUND STRUCTURE
I-39 OVER B.N.R.R.

S.N. 052-0047

F.A.J. RTE.	SECTION	COUNTY	TOTAL SHEETS	SHEET NO.
39	1103-1, 103-2/RS	LEE	313	198

CONTRACT NO. 64E97

SCALE: SHEET NO. 59 OF 527 SHEETS STA. TO STA.

FED. ROAD DIST. NO. ILLINOIS FED. AID PROJECT