



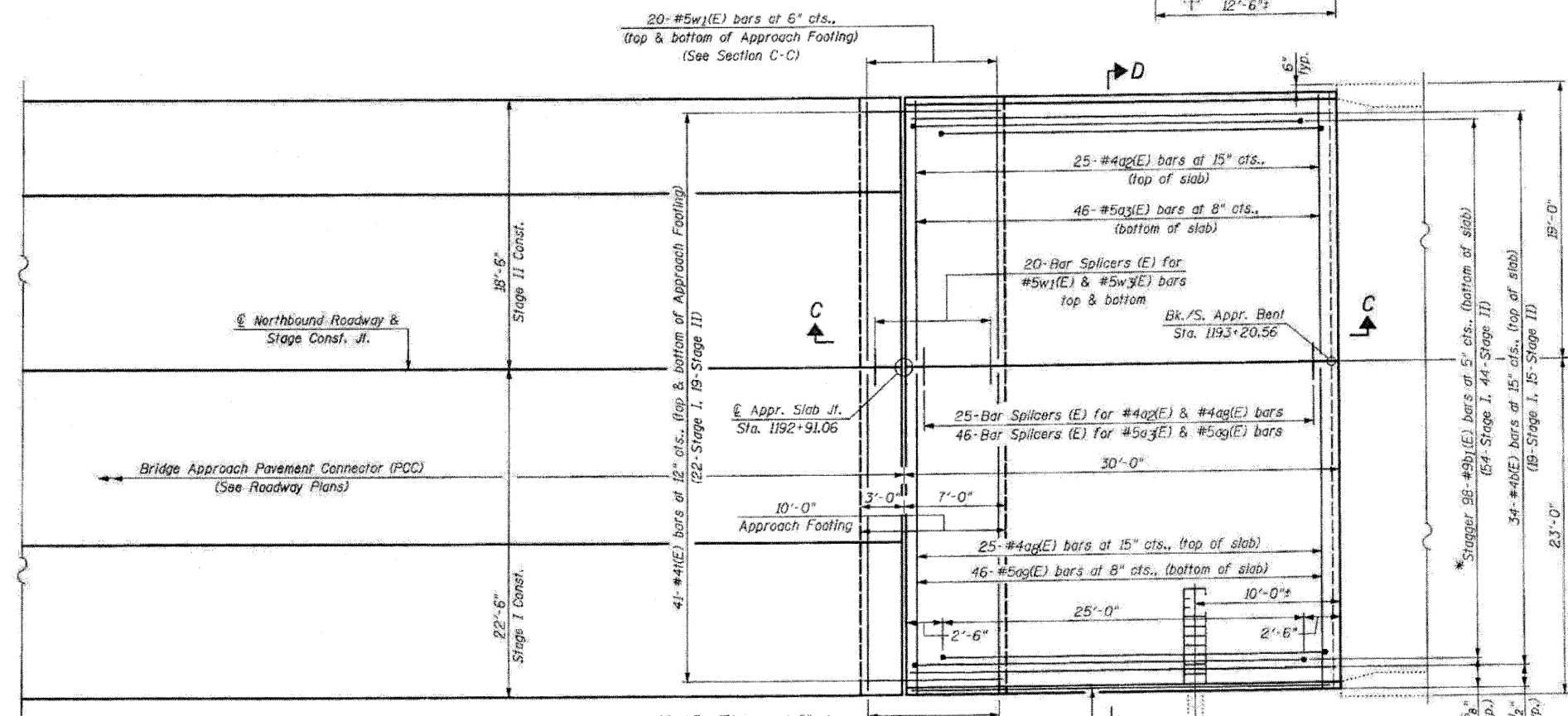
PLAN
EXISTING SOUTH APPROACH SLAB
(Showing removal)

LEGEND:

 Approach Slab Removal

 Bridge Approach Shoulder Removal

NOTES:
For additional Pre-stage work and Stage I & Stage II shoulder & overlay work outside of approach slabs, see Roadway Plans.
For modifications to exist. Inlet boxes, see Roadway Plans.



PLAN
PROPOSED SOUTH APPROACH SLAB
(Showing repair)

FILE NAME = 952844-64E97-22-S-Appr-NB
PLOT DATE = 3/29/2010
PLOT SCALE = 50.0000' / 1" IN.

CHRISTIAN-ROGE & ASSOCIATES, INC.
ENGINEERS-PLANNERS-SURVEYORS
211 WEST WACKER DRIVE
CHICAGO, ILLINOIS 60606
PHONE: (312)372-2023 FAX: (312)372-5274

DESIGNED - B.N.S./J.C.N.
DRAWN - D.L./F.M.
CHECKED - B.N.S./J.C.N.
DATE - MARCH, 2010

REVISED -
REVISED -
REVISED -
REVISED -

STATE OF ILLINOIS
DEPARTMENT OF TRANSPORTATION

SOUTH APPROACH SLAB REPAIR-I
NORTHBOUND STRUCTURE
I-39 OVER PERRY ROAD
S.N. 052-0045
SCALE: SHEET NO. S22 OF 528 SHEETS STA. TO STA.

F.A.I. RTE.	SECTION	COUNTY	TOTAL SHEETS	SHEET NO.
39	103-1, 103-2/RS	LEE	313	238
FED. ROAD DIST. NO. [ILLINOIS] FED. AID PROJECT			CONTRACT NO. 64E97	