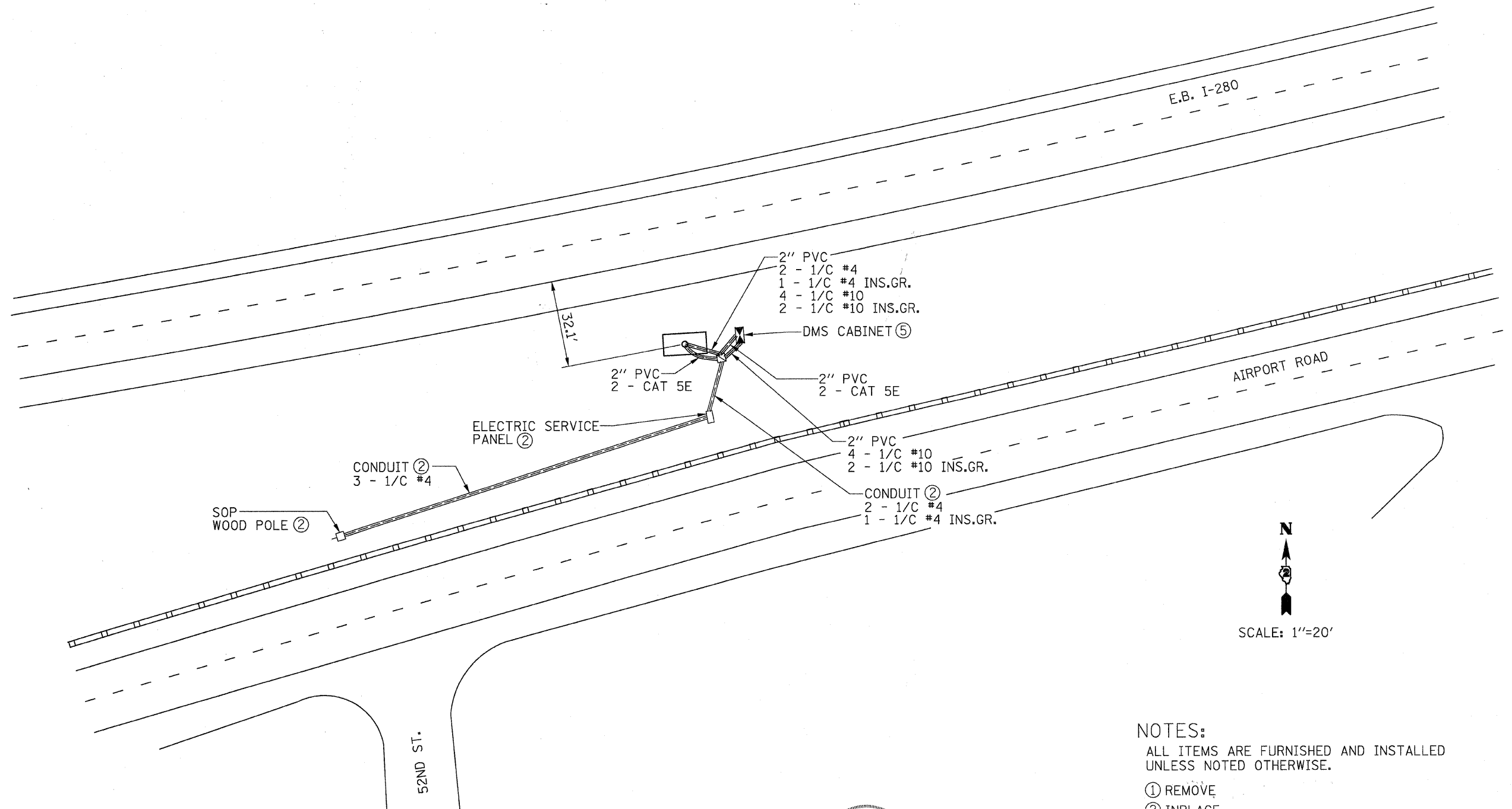


STATE OF ILLINOIS
DEPARTMENT OF TRANSPORTATION



N
SCALE: 1"=20'

- NOTES:
ALL ITEMS ARE FURNISHED AND INSTALLED UNLESS NOTED OTHERWISE.
- ① REMOVE
 - ② INPLACE
 - ③ SALVAGE
 - ④ INSTALL SALVAGED
 - ⑤ F & I CONCRETE FOUNDATION
INSTALL CABINET



George M. Stuempfig
4/9/10

REVISED
5-26-10
SHEET

SITE 407
E.B. I-280 1.3 MILES W. OF I-74/US 6

DESIGNED - S. POSKA	2010
CHECKED - G. STUEMPFIG	EXAMINED
DRAWN - M. BRESSLER	PASSED
CHECKED - G. STUEMPFIG	ENGINEER OF BRIDGES AND STRUCTURES

SHEET NO.	F.A. RTE.	SECTION	COUNTY	TOTAL SHEETS	SHEET NO.
15	74+280	D2.IT MESSAGE SIGN	ROCK ISLAND	-	15
SHEETS 23	CONTRACT NO. 64F86			ILLINOIS FED. AID PROJECT C92-061-10	