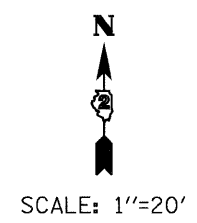
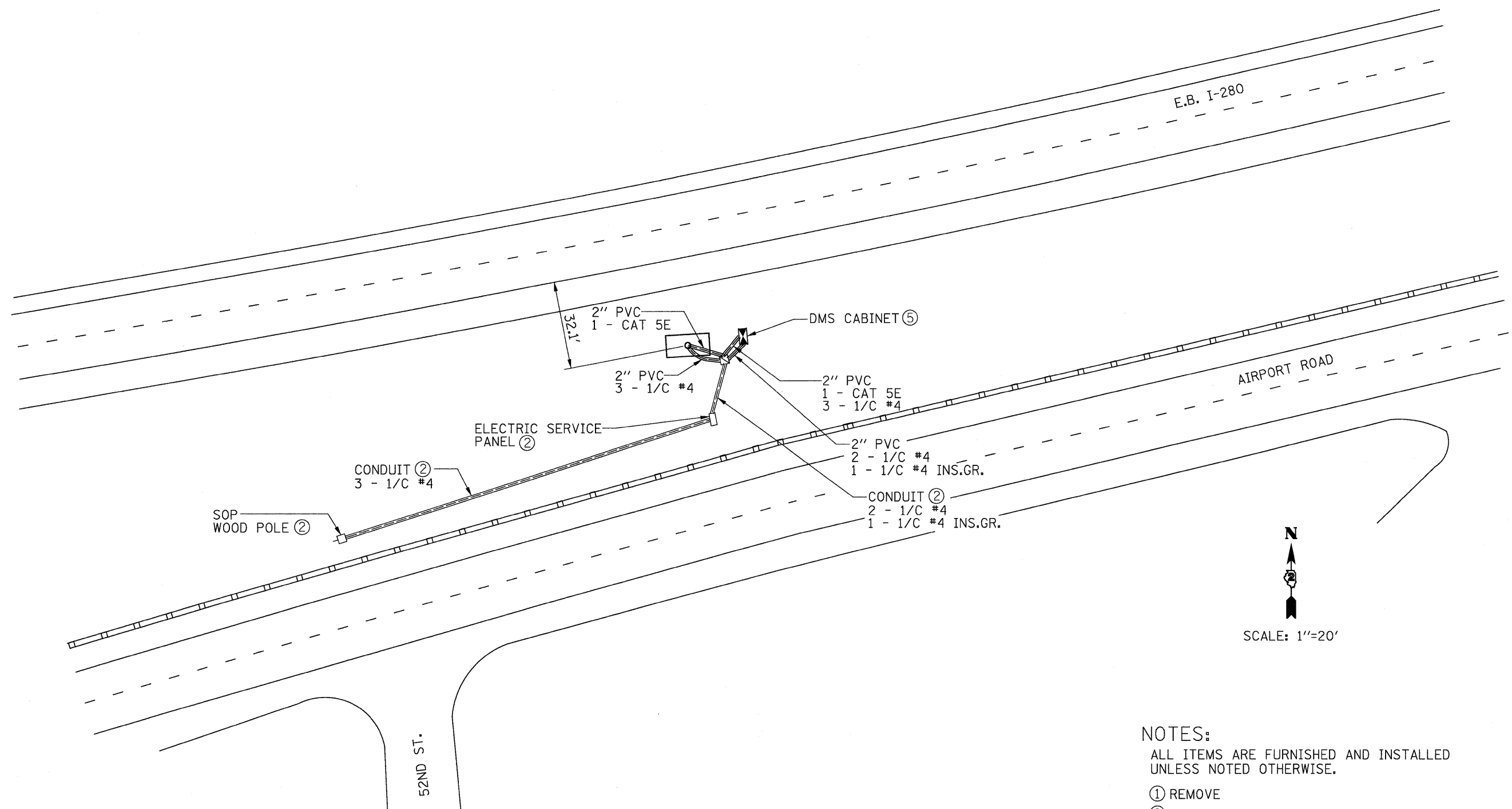


STATE OF ILLINOIS  
DEPARTMENT OF TRANSPORTATION



- NOTES:
- ALL ITEMS ARE FURNISHED AND INSTALLED UNLESS NOTED OTHERWISE.
  - ① REMOVE
  - ② INPLACE
  - ③ SALVAGE
  - ④ INSTALL SALVAGED
  - ⑤ F & I CONCRETE FOUNDATION  
INSTALL CABINET

DESIGNED - S. POSKA	2010
CHECKED - G. STUEMPFIG	EXAMINED
DRAWN - M. BRESSLER	PASSED
CHECKED - G. STUEMPFIG	ENGINEER OF BRIDGES AND STRUCTURES



*George M. Stuempfig*  
3/8/10

SITE 407  
E.B. I-280 1.3 MILES W. OF I-74/US 6

SHEET NO. 15 SHEETS 23	F.A. RTE.	SECTION	COUNTY	TOTAL SHEETS	SHEET NO.
	74+280	D2.IT MESSAGE SIGN	ROCK ISLAND	23	15
			CONTRACT NO. 64F86		
		ILLINOIS	FED. AID PROJECT	C92-061-10	