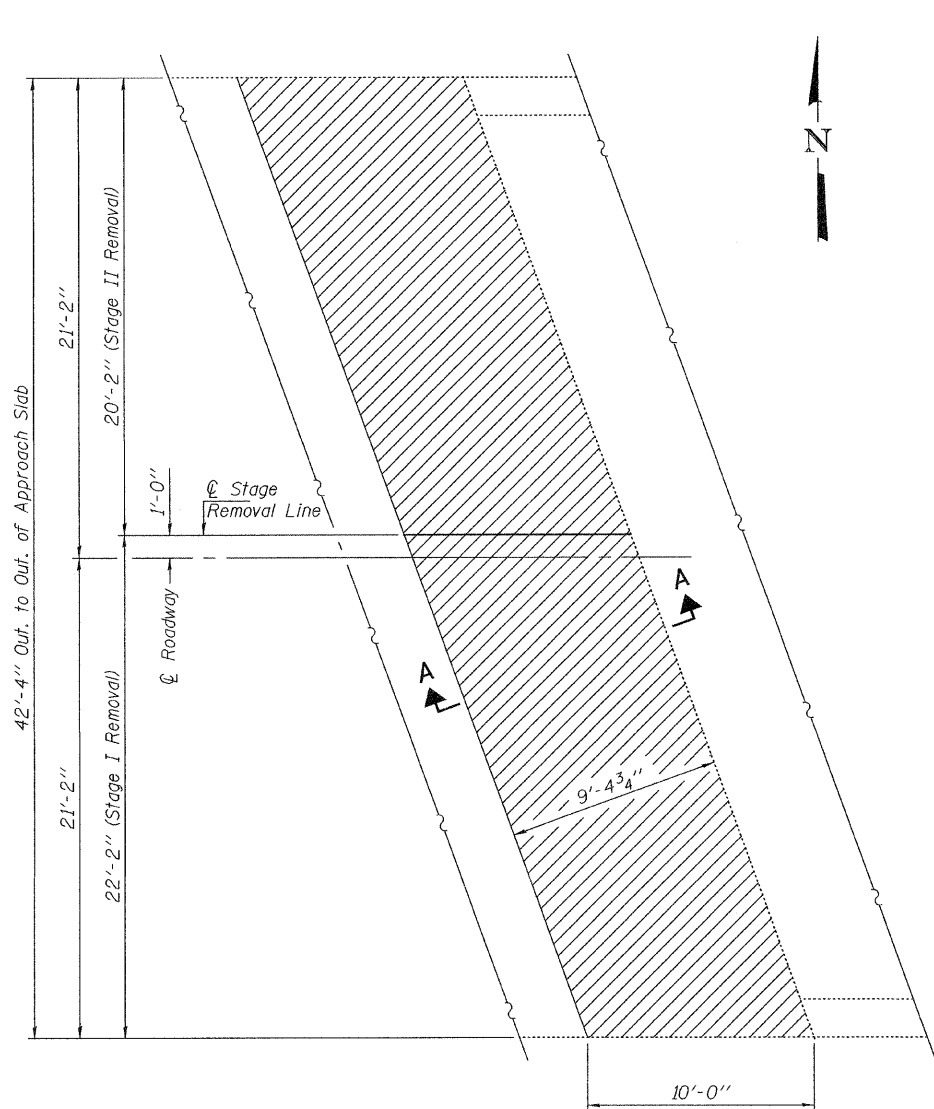
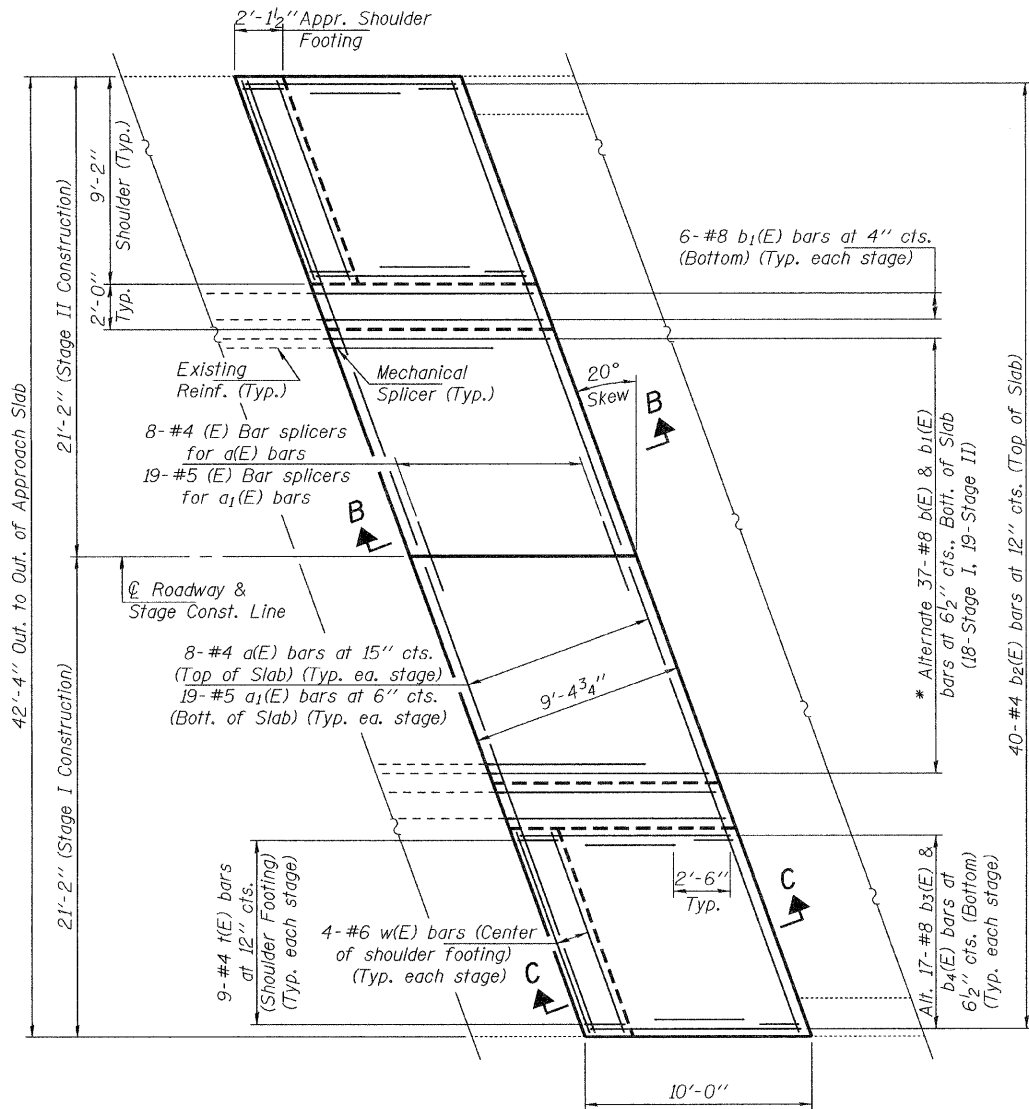


STATE OF ILLINOIS
DEPARTMENT OF TRANSPORTATION

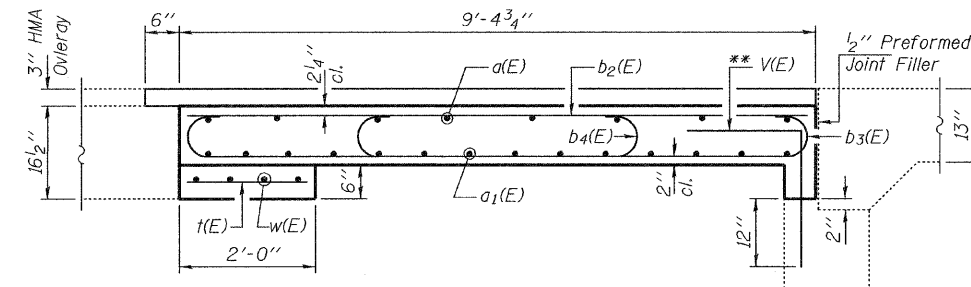


CONCRETE REMOVAL PLAN

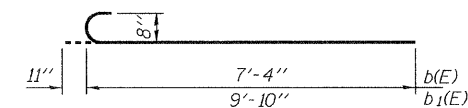


CONCRETE PLAN

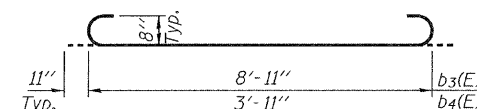
Spacing provided for b(E) & b1(E) bars to be used as a guideline. Existing spacing shall govern.



SECTION C-C
Dims. at Rt. L



BARS b(E) & b1(E)



BARS b3(E) & b4(E)

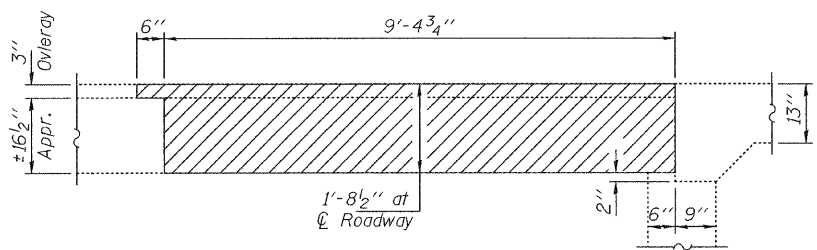
BAR V(E)

BILL OF MATERIAL

Bar	No.	Size	Length	Shape
a(E)	16	#4	22'-1"	—
a1(E)	38	#5	22'-1"	—
b(E)	18	#8	8'-7"	┌
b1(E)	31	#8	11'-1"	┌
b2(E)	40	#4	9'-8"	—
b3(E)	16	#8	10'-9"	┌
b4(E)	18	#8	5'-9"	┌
t(E)	18	#4	1'-9"	—
V(E)	40	#5	3'-8"	L
w(E)	8	#6	9'-4"	—
Approach Slab Removal			Sq. Yd.	47.0
Concrete Superstructure			Cu. Yd.	14.8
Reinforcement Bars, Epoxy Coated			Pound	3720

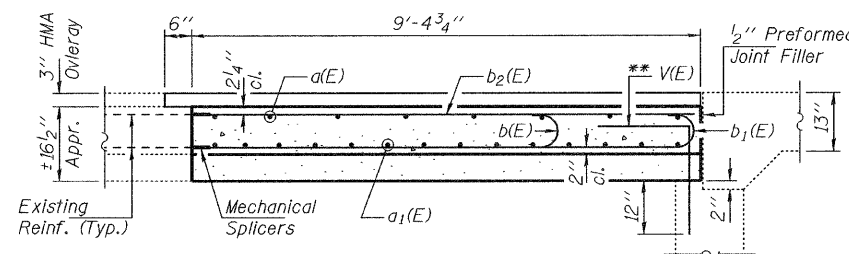
* Tilt #8 b(E) & b1(E) bars as required to maintain clearance.

** V(E) bars to be drilled and epoxy grouted to the abutment spaced at 12" centers. Epoxy grouting shall conform to Article 584 of the Standard Specifications.



SECTION A-A
Dims. at Rt. L

Note: Hatched areas indicate Approach Slab Removal



SECTION B-B
Dims. at Rt. L

DESIGNED	IJL
CHECKED	GGE
DRAWN	Kyle M. Steffen
CHECKED	IJL GGE

APRIL 30, 2010
EXAMINED *Carl Perry*
ENGINEER OF STRUCTURAL SERVICES
PASSED *Ralph E. Anderson*
ENGINEER OF BRIDGES AND STRUCTURES

**WEST APPROACH SLAB
REPAIR DETAILS
SN 071-0015**

SHEET NO. 2 4 SHEETS	F.A.P. RTE.	SECTION	COUNTY	TOTAL SHEETS	SHEET NO.
	17	(102BR)M & (39BR)M	OGLE	19	9
FED. ROAD DIST. NO.			ILLINOIS	FED. AID PROJECT	
CONTRACT NO. 64G13					