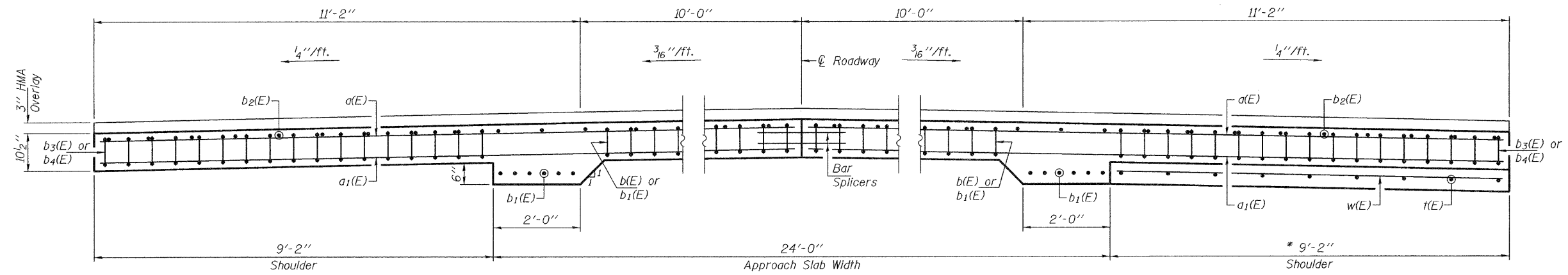


STATE OF ILLINOIS
DEPARTMENT OF TRANSPORTATION

Note:
Approach Shoulder Footing shall be paid as Concrete Structures. Cost of excavation for Approach Shoulder Footing included with Concrete Structures.



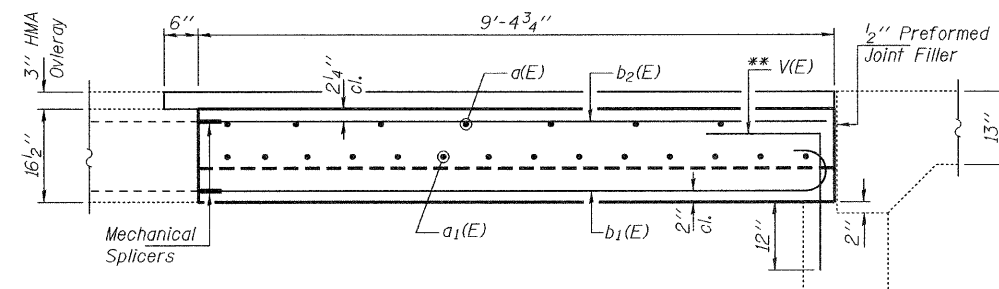
NEAR ABUTMENT

CROSS SECTION THRU APPROACH
(See Plan for dimensions not shown)

AT SHOULDER FOOTING
(10'-0" away from abut.)

* Approach Shoulder Footing

** V(E) bars to be drilled and epoxy grouted to the abutment spaced at 12" centers. Epoxy grouting shall conform to Article 584 of the Standard Specifications.



SECTION THRU THICKENED EDGE OF SLAB
Dims. at Rt. L

DESIGNED	IJL
CHECKED	GGE
DRAWN	Kyle M. Steffen
CHECKED	IJL GGE

APRIL 30, 2010
EXAMINED *A. Carl Poyner*
ENGINEER OF STRUCTURAL SERVICES
PASSED *Ralph E. Anderson*
ENGINEER OF BRIDGES AND STRUCTURES

BSD-1 11-1-09

REPAIR DETAILS
SN 071-0015

SHEET NO. 3 4 SHEETS	F.A.P. RTE.	SECTION	COUNTY	TOTAL SHEETS	SHEET NO.
	17	(102BR)M & (39BR)M	OGLE	19	10
FED. ROAD DIST. NO.			ILLINOIS FED. AID PROJECT		
CONTRACT NO. 64G13					