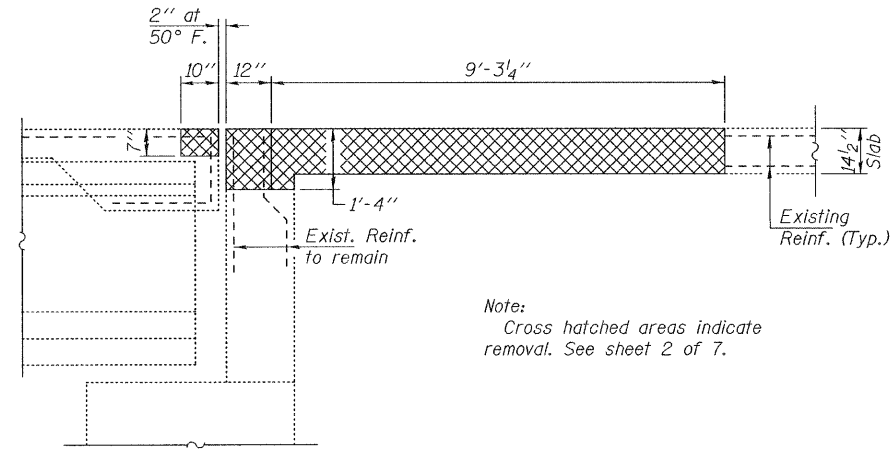
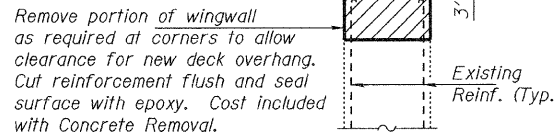


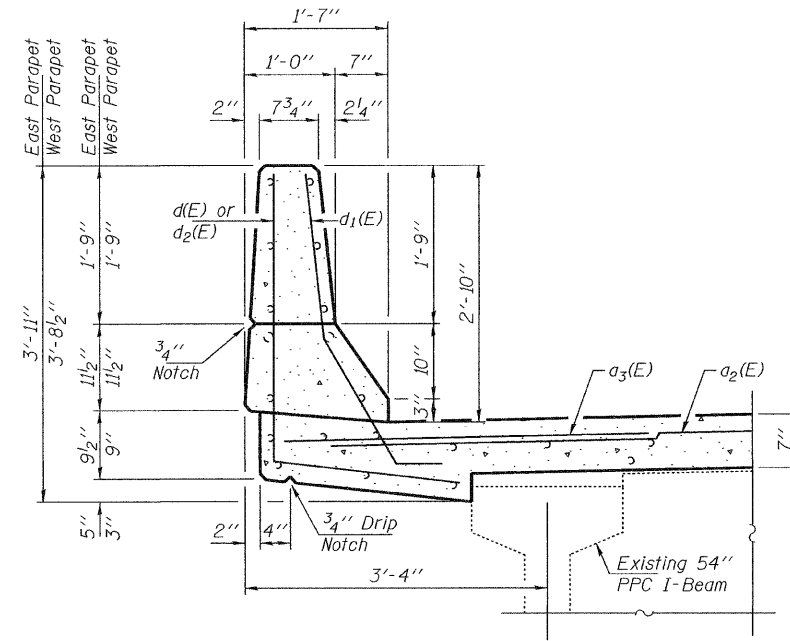
STATE OF ILLINOIS
DEPARTMENT OF TRANSPORTATION



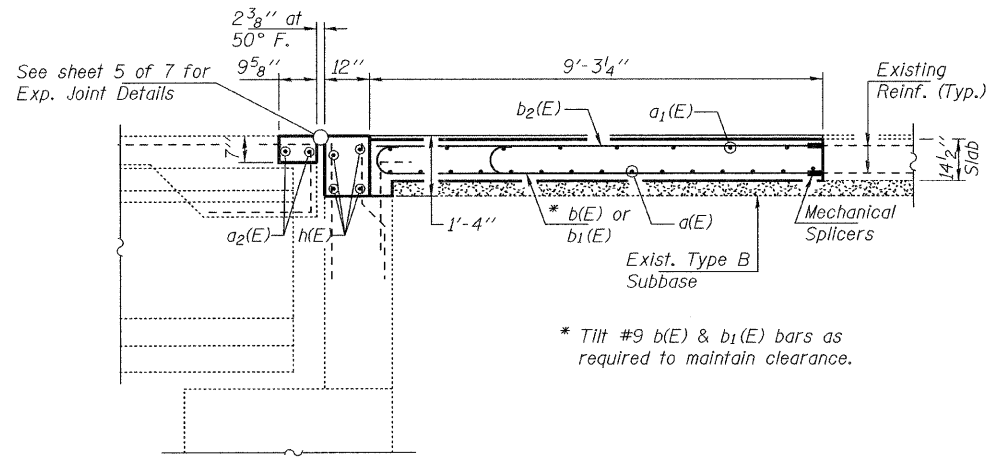
SECTION A-A
Dims. at Rt. L



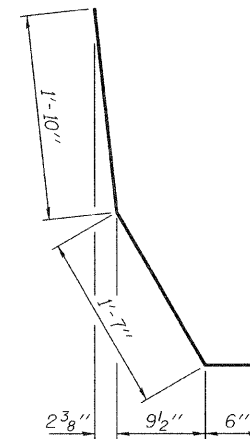
SECTION THRU PARAPET (APPROACH)



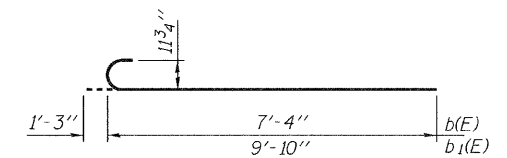
SECTION THRU PARAPET (DECK)



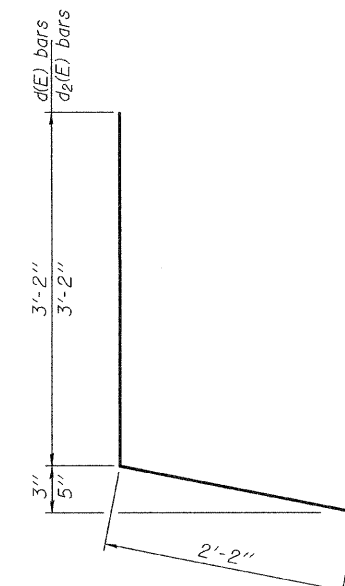
SECTION B-B
Dims. at Rt. L



BAR d1(E)



BARS b(E) & b1(E)



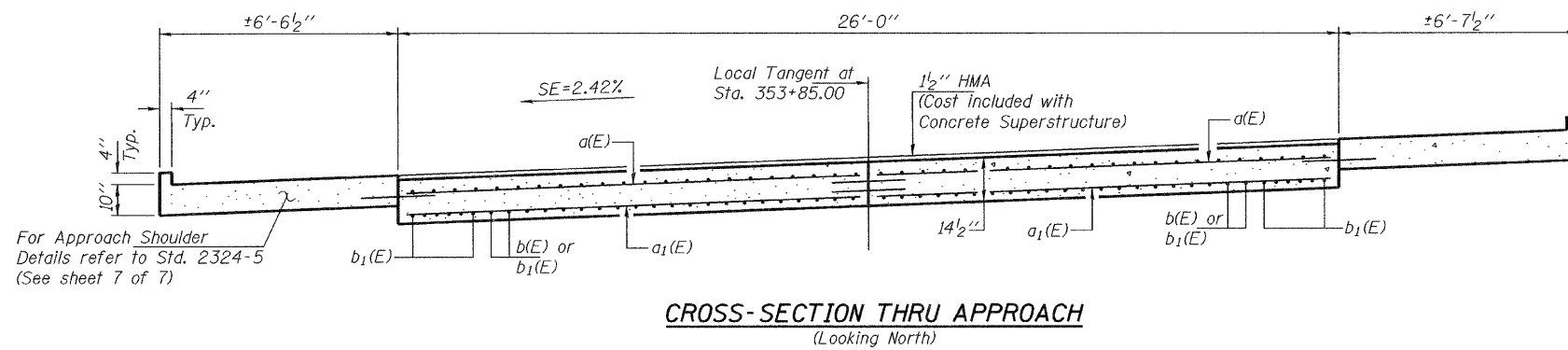
BARS d(E) & d2(E)

* Tilt #9 b(E) & b1(E) bars as required to maintain clearance.

BILL OF MATERIAL

Bar	No.	Size	Length	Shape
a(E)	16	#4	13'-7"	—
a1(E)	28	#5	13'-7"	—
a2(E)	8	#5	20'-9"	—
a3(E)	8	#6	4'-6"	—
b(E)	22	#9	8'-7"	C
b1(E)	34	#9	11'-1"	C
b2(E)	44	#4	9'-8"	—
d(E)	4	#4	5'-4"	L
d1(E)	8	#5	3'-11"	L
d2(E)	4	#4	5'-4"	L
h(E)	16	#6	22'-6"	—

Concrete Removal Cu. Yd. 6.7
 ** Concrete Superstructure Cu. Yd. 18.2
 ** Reinforcement Bars, Epoxy Coated Pound 3580
 ** Includes quantities for new approach slab



CROSS-SECTION THRU APPROACH
(Looking North)

DESIGNED	IJL
CHECKED	GGE
DRAWN	Kyle M. Steffen
CHECKED	IJL GGE

APRIL 30, 2010
EXAMINED <i>Carl P. ...</i>
PASSED <i>Ralph E. Anderson</i>

REPAIR DETAILS
SN 071-0072

SHEET NO. 3 7 SHEETS	F.A.P. RTE.	SECTION	COUNTY	TOTAL SHEETS	SHEET NO.
	742	(102BR)M & (39BR)M	OGLE	19	14
CONTRACT NO. 64G13					
FED. ROAD DIST. NO. ILLINOIS FED. AID PROJECT					