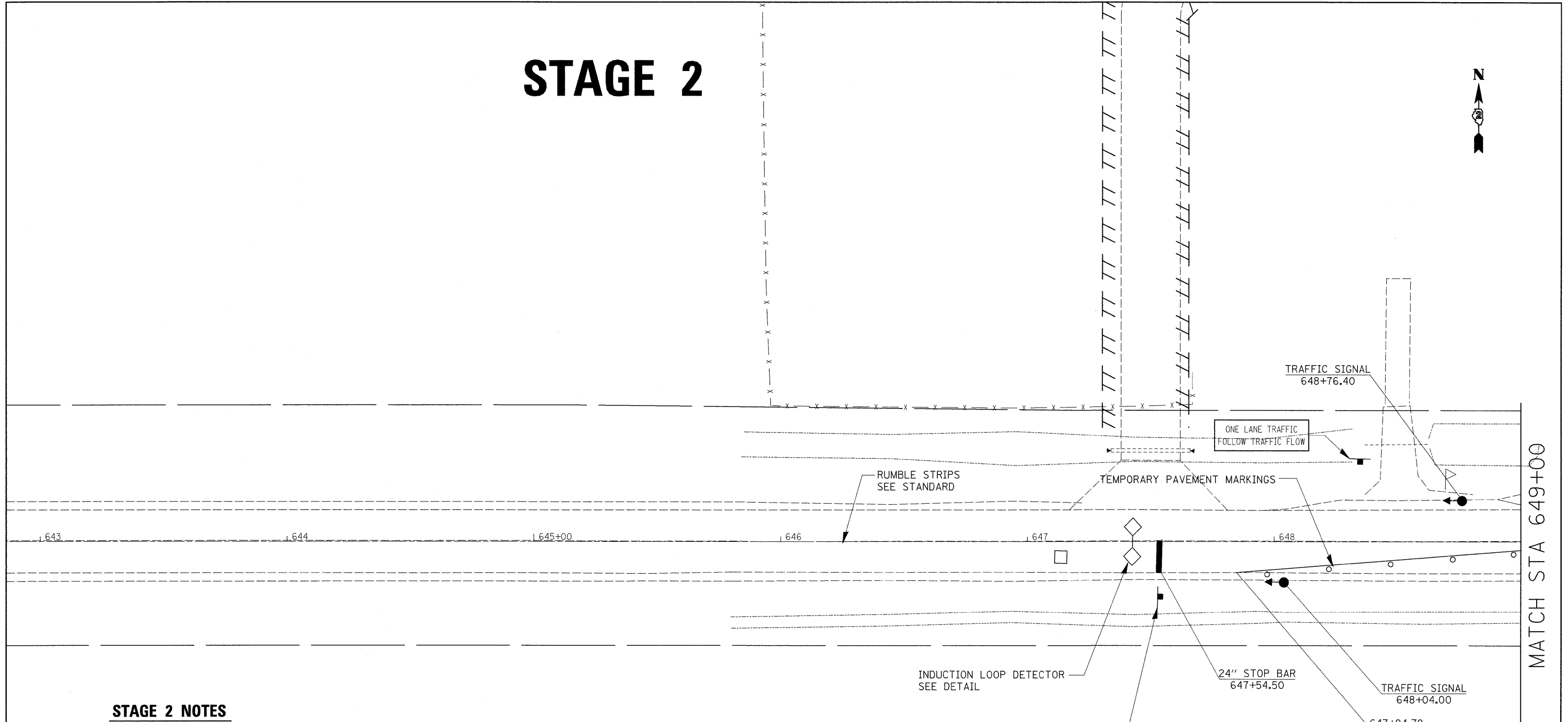


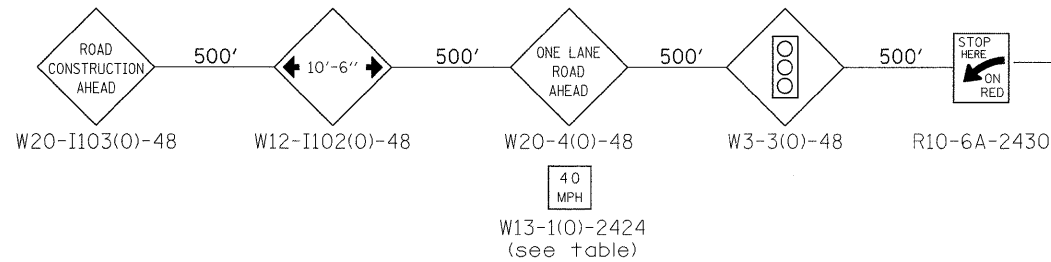
STAGE 2



STAGE 2 NOTES

1. USE STANDARD 701321 FOR CULVERT WORK.
2. CONSTRUCT DOWNSTREAM SECTIONS OF CULVERT INCLUDING RIP-RAP AND EARTHWORK.
3. PLACE TEMPORARY WIDENING AND PROPOSED GUARDRAIL IN PREPARATION FOR STAGE 3.

	= WORK ZONE
	= TYPE III BARRICADE WITH FLASHING LIGHTS
	= SIGN
	= BARRICADE, OR DRUM WITH STEDAY BURNING LIGHTS
	= INDUCTION LOOP DETECTOR
	= TRAFFIC SIGNAL
	= TEMPORARY RUMBLE STRIPS



NOTE: ANY SIGNS THAT WOULD NOT FIT AT THE SPACING SHOWN ON THIS LEG OF IL 92, SHALL BE PLACED ON BOTH NORTHBOUND AND SOUTHBOUND IL 78, WITH AN ARROW (W1-6(0)3618) BELOW EACH SIGN.

FILE NAME =	USER NAME = grantpm	DESIGNED -	REVISED -	STATE OF ILLINOIS DEPARTMENT OF TRANSPORTATION	STAGE 2	F.A.P. RTE.	SECTION	COUNTY	TOTAL SHEETS	SHEET NO.	
ct:\pw_work\p\dot\grantpm\dms36948\020406-shit-staging.dgn	PLOT SCALE = 20.0000' / IN.	DRAWN -	REVISED -			585	128T-1	HENRY	35	18	
PLOT DATE = Thu Mar 18 11:22:06 2010	DATE -	CHECKED -	REVISED -			CONTRACT NO. 64G18		ILLINOIS FED. AID PROJECT			
						SCALE:	SHEET NO. OF SHEETS STA. TO STA.				