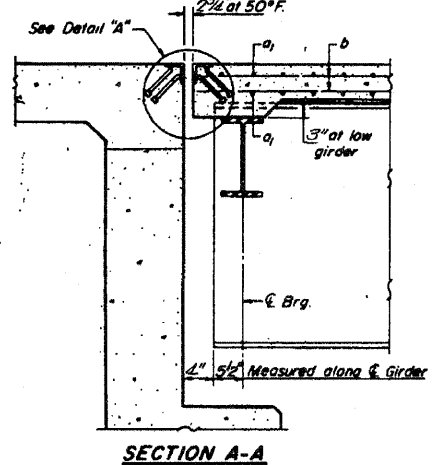
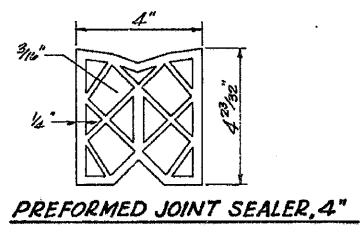
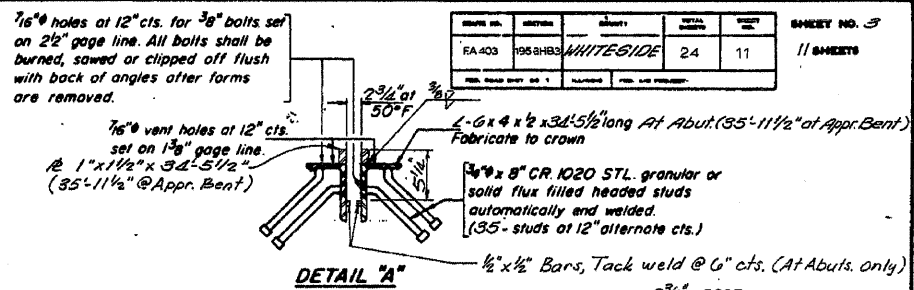
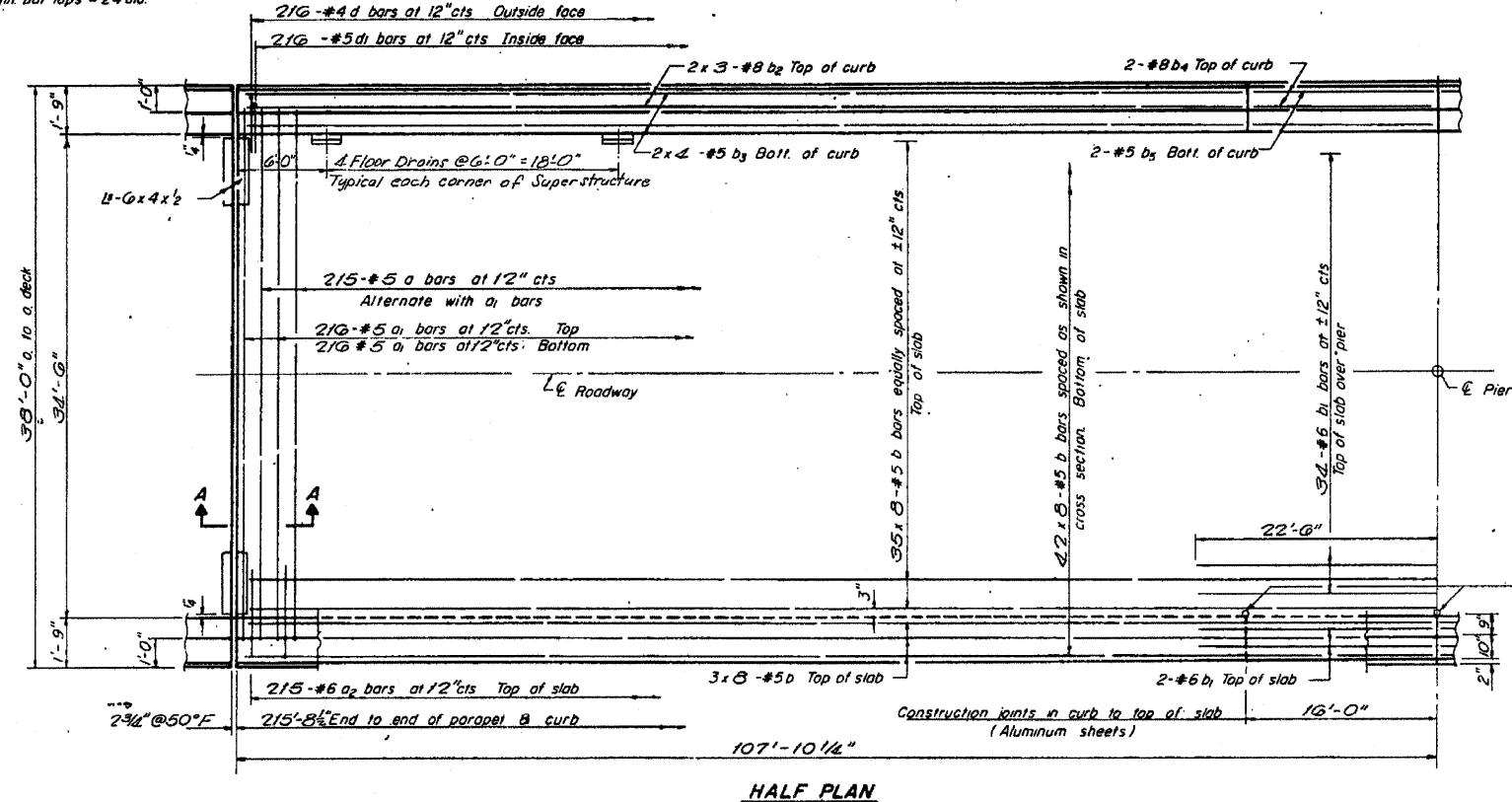


NOTE:  
Bars indicated in 20' lengths per line.  
Min. bar laps = 24" dia.

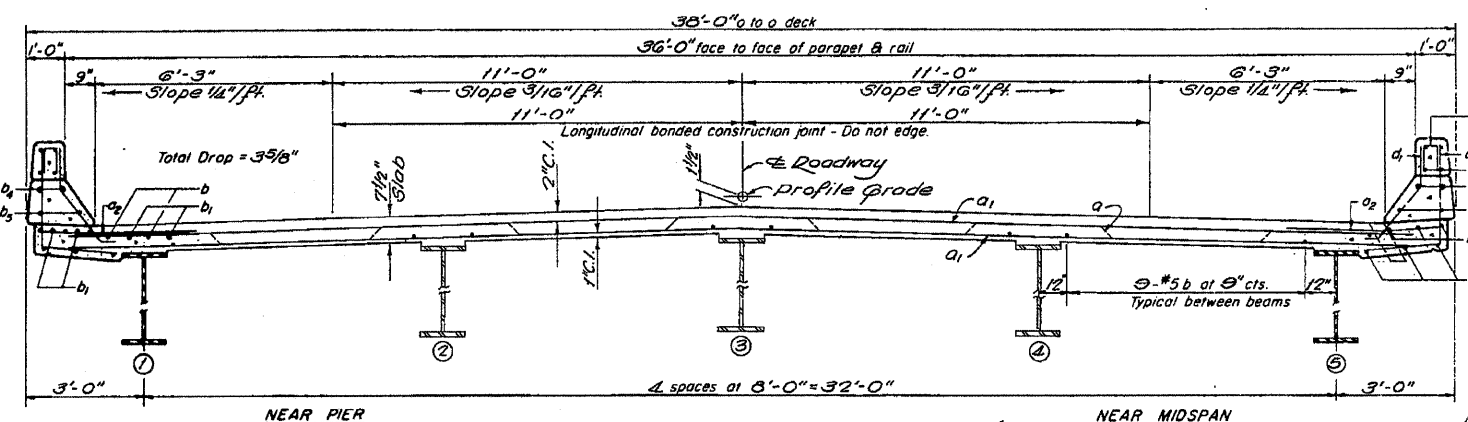
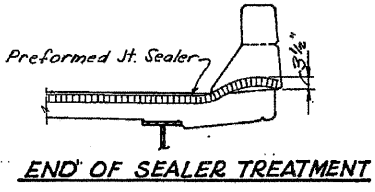
# FOR INFORMATION ONLY

STATE OF ILLINOIS  
DIVISION OF HIGHWAYS

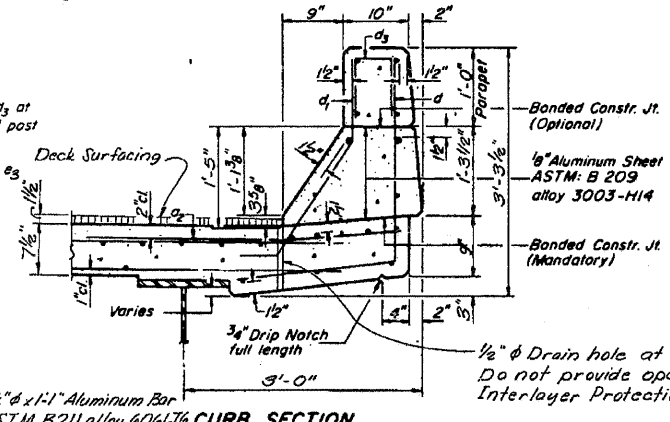
PROJECT NO.	SECTION	SHEET NO.	TOTAL SHEETS
FA 403	195-3HB-3	24	11



1/2"  $\phi$  Drain holes under Interlayer Protective Coat at each joint. (Typ. Ea. Side)

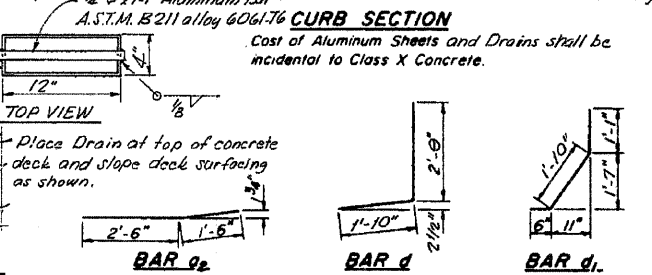
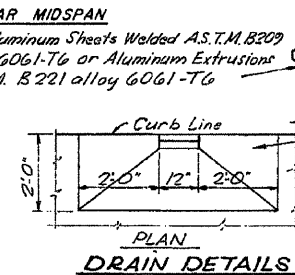
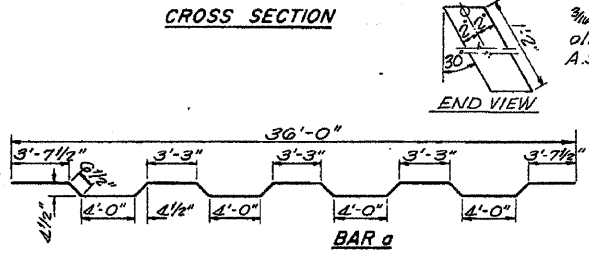


NOTE: For placement of bars  $a_3$  and  $e_1$  thru  $e_3$  see sheet #5.



Bar No.	Size	Length	Shape
a	215 #5	37'-2"	
a <sub>1</sub>	432 #5	36'-0"	
a <sub>2</sub>	430 #6	4'-0"	
b	262 #5	23'-0"	
b <sub>1</sub>	38 #6	45'-0"	
b <sub>2</sub>	24 #8	31'-11"	
b <sub>3</sub>	32 #5	23'-4"	
b <sub>4</sub>	8 #8	15'-9"	
b <sub>5</sub>	8 #5	15'-9"	
d	432 #4	2'-7"	
e	432 #5	3'-5"	
Reinforcement Bars			Lbs. 55310
Class X Concrete			Cu. Yds. 201.8

DESIGNED	C. Clary
CHECKED	S. M <sup>c</sup> Knight
DRAWN	C. Clary
CHECKED	S. M <sup>c</sup> Knight



Parapet Reinforcement and Class X Concrete are billed on sheet # 5

**SUPERSTRUCTURE MAIN SPANS**  
FA. RTE. 403 SEC. 195-3HB-3  
WHITESIDE COUNTY  
STATION 2415+47.10