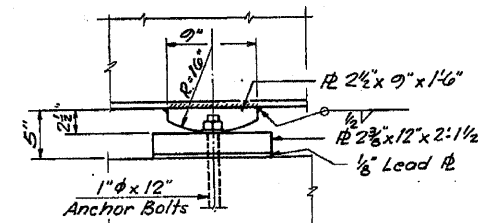
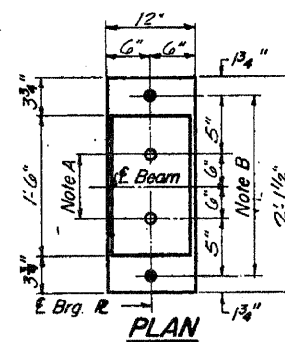


PLAN
AT ABUTMENT

NOTE A
1 3/8" Holes - 1" deep in top R.
for pintles Thread or press fit
pintles into bottom R.

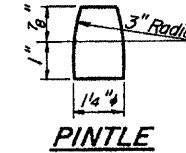


ELEVATION

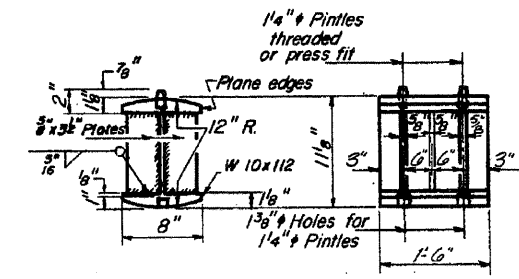


PLAN
AT PIER

NOTE B
1 1/2" Holes for 1" anchor bolts.
1 1/2" x 2 1/2" x 2 1/2" R. Washers
under nut.



PINTLE



ROCKER

NOTE C
1 3/8" Holes 1" deep in top R.
only for 1 1/4" pintles.

NOTES ON SETTING OF ANCHOR BOLTS AT EXP. BRGS.

- D^* (Side of brg away from fixed brg.)
 $D^* = \frac{1}{8}$ " per each 100' of expansion for every 15° fall below the normal temp. of 50°F.
 - D^{**} (Side of brg. toward fixed brg.)
 $D^{**} = \frac{1}{8}$ " per each 100' of expansion for every 15° rise above the normal temp. of 50°F.
- b) After beams have been erected and dimensions D^* or D^{**} determined, holes shall be drilled and anchor bolts shall be grouted in place. All fixed anchor bolts may be built into the masonry.

BEARING ASSEMBLY DETAILS

| | |
|---|------------------------|
| DESIGNED <i>S. MCK.</i> | EXAMINED _____ |
| CHECKED _____ | PASSED _____ |
| DRAWN <i>P.G. Barnett & C. D.C.</i> | APPROVED _____ |
| CHECKED <i>S. MCK.</i> | CHIEF HIGHWAY ENGINEER |

I-2-B 9-1-65, B-1-70

FOR INFORMATION ONLY

SHOES

F.A. RTE. 403 - SEC. 195-3HB-3
WHITESIDE COUNTY
STATION 2415+47.10

| | | | | | | | | | | |
|--|--------------------|------------|-----------|---|----------|---------------------------|--------------|-----------|--------------|-----------|
| FILE NAME = | USER NAME = linkdj | DESIGNED - | REVISED - | STATE OF ILLINOIS DEPARTMENT OF TRANSPORTATION | BEARINGS | F.A.I. RTE. | SECTION | COUNTY | TOTAL SHEETS | SHEET NO. |
| D:\BRN\Bridg Painting\Contracta\PAINTING\64G19\PLANeng.dgn | | DRAWN - | REVISED - | | | 88 | (195-3HB-3)P | Whiteside | 8 | 8 |
| PLOT SCALE = 50,0000 ' / IN. | | CHECKED - | REVISED - | | | CONTRACT NO. 64G19 | | | | |
| PLOT DATE = Tue Mar 16 06:41:58 2010 | | DATE - | REVISED - | | | ILLINOIS FED. AID PROJECT | | | | |