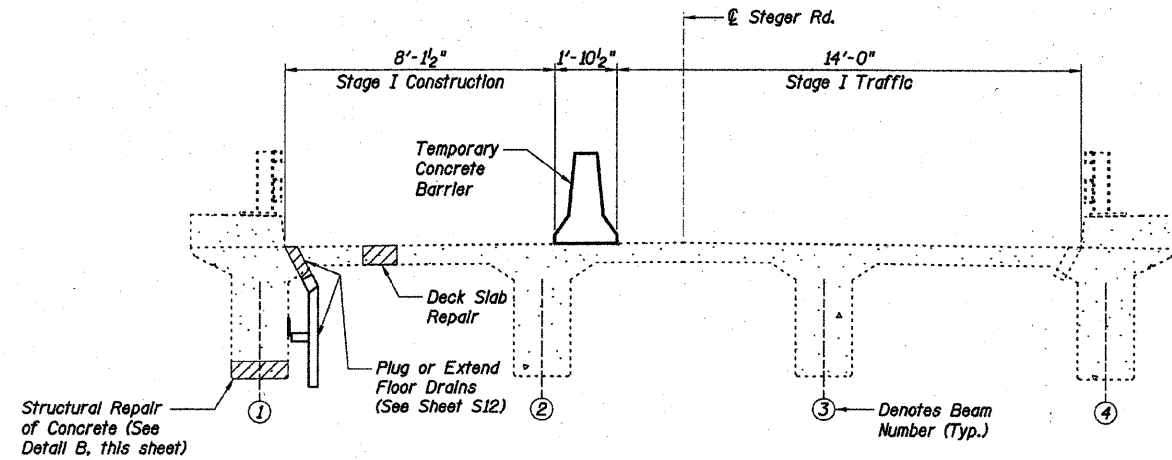
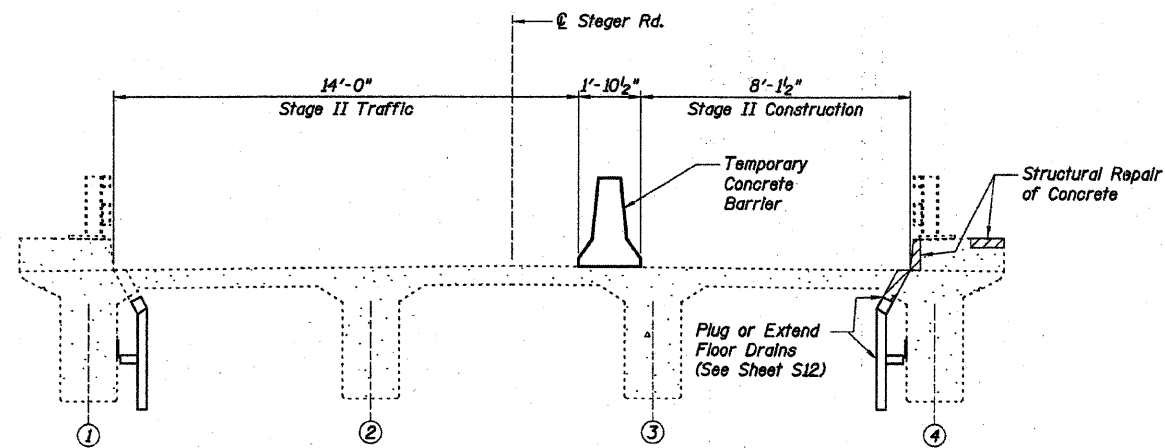


STATE OF ILLINOIS
DEPARTMENT OF TRANSPORTATION



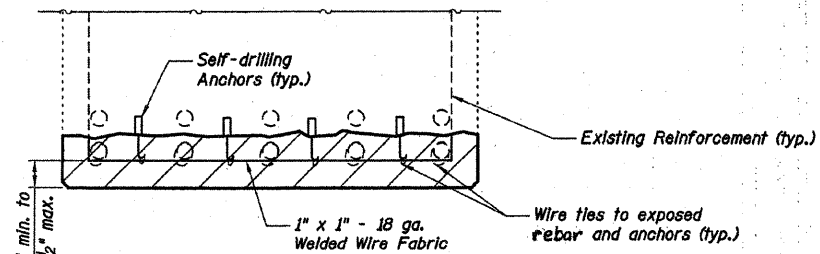
STAGE I TRAFFIC AND CONSTRUCTION

Note: Only perform concrete repair work above top of deck and bridge railing transition work with the Staging shown. (Looking Stations Ahead)

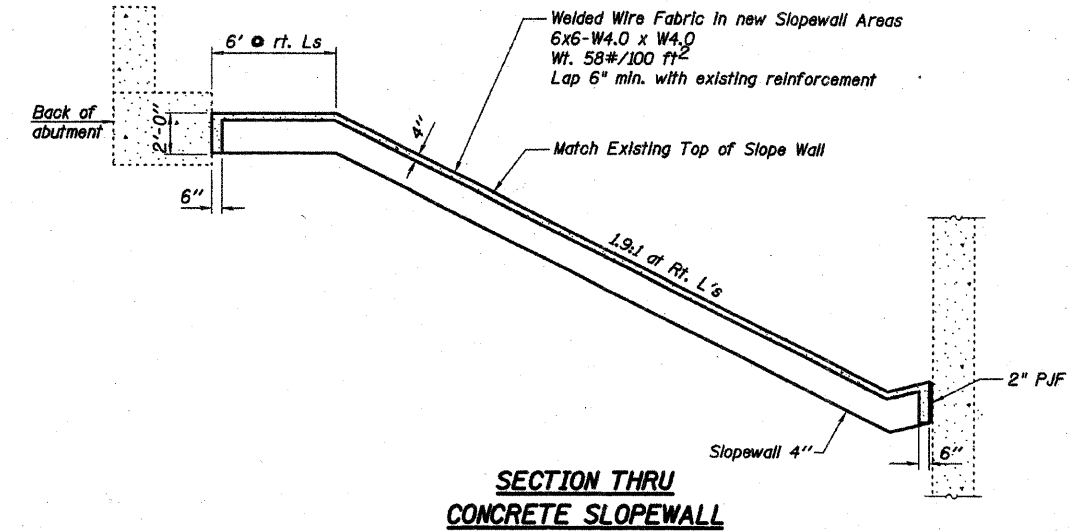


STAGE II TRAFFIC AND CONSTRUCTION

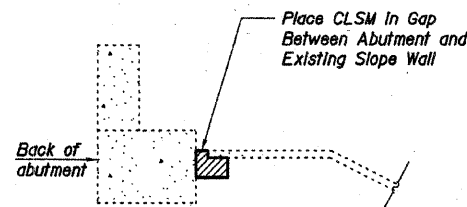
Note: Only perform concrete repair work above top of deck and bridge railing transition work with the Staging shown. (Looking Stations Ahead)



DETAIL B



SECTION THRU CONCRETE SLOEWALL



DETAIL A

TOTAL BILL OF MATERIAL

ITEM	UNIT	SUPER-STRUCTURE QUANTITY	SUBSTRUCTURE QUANTITY		TOTAL QUANTITY
			PIERS	ABUTMENTS	
Slope Wall Removal	Sq Yd	0	0	134	134
Slope Wall 4 Inch	Sq Yd	0	0	134	134
Controlled Low-Strength Material	Cu Yd	0	0	4	4
Plug Existing Deck Drains	Each	8	0	0	8
Cleaning and Painting Exposed Rebar	Sq Ft	25	0	0	25
Structural Repair of Concrete (Depth Equal to or Less Than 5 Inches)	Sq Ft	7	11	2	20
Floor Drain Extension	Each	16	0	0	16
Deck Slab Repair (Full Depth, Type I)	Sq Yd	1	0	0	1

STAGING DIAGRAM AND BILL OF MATERIAL

STEGER ROAD OVER I-57
F.A.I. RTE. 57 - SEC. (46-1,2)RS-3&I
KANKAKEE COUNTY
STA. 815+16.50
S.N. 046-0083

REVISOR SHEET 5-26-10

SHEET NO. S10	F.A.I. RTE. 57	SECTION (46-1,2)RS-3&I	COUNTY KANKAKEE	TOTAL SHEETS 115	SHEET NO. 35
S27 SHEETS			CONTRACT NO. 66608		
FED. ROAD DIST. NO. 7 ILLINOIS FED. AID PROJECT					

Baker

I:\1972\vol13.0 deliverables\3.3 structure\drawings\final\B2 0083staging.dgn
 4/17/2008
 DESIGNED: GWG
 CHECKED: KPZ
 DRAWN: MAM
 CHECKED: KPZ