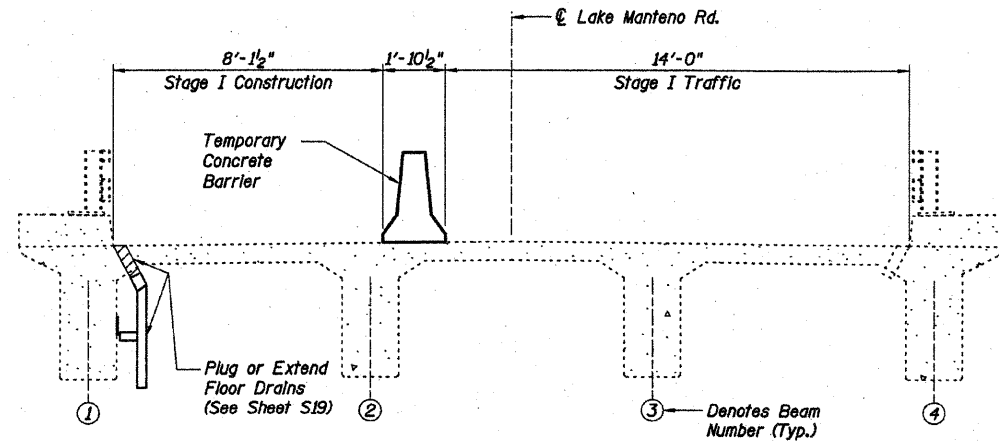


**TOTAL BILL OF MATERIAL**

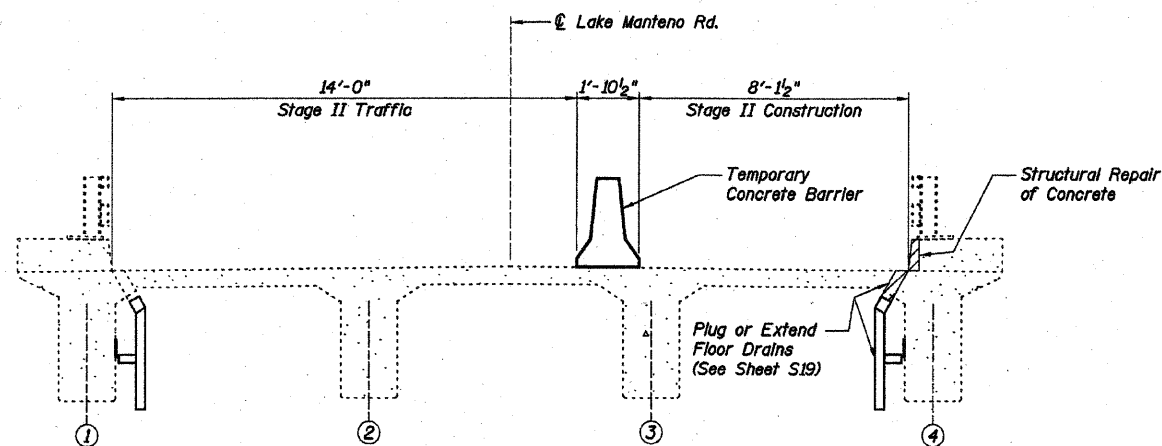
ITEM	UNIT	SUPER-STRUCTURE QUANTITY	SUBSTRUCTURE QUANTITY		TOTAL QUANTITY
			PIERS	ABUTMENTS	
Slope Wall Removal	Sq Yd	0	0	122	122
Slope Wall 4 Inch	Sq Yd	0	0	122	122
Controlled Low-Strength Material	Cu Yd	0	0	7	7
Plug Existing Deck Drains	Each	8	0	0	8
Cleaning and Painting Exposed Rebar	Sq Ft	45	0	0	45
Structural Repair of Concrete (Depth Equal to or Less Than 5 Inches)	Sq Ft	1	25	1	27
Floor Drain Extension	Each	16	0	0	16
Steel Railing	Ft	2	0	0	2



**STAGE I TRAFFIC AND CONSTRUCTION**

(Looking Stations Ahead)

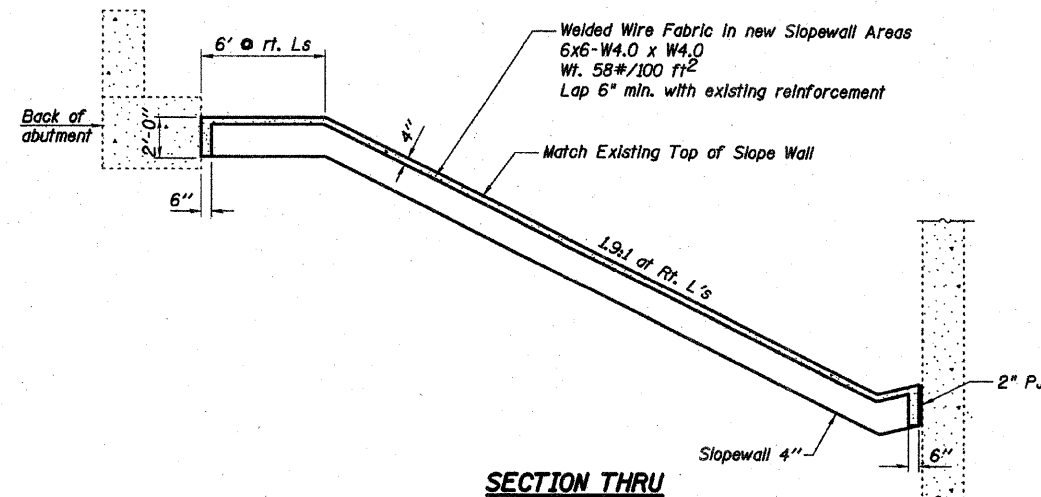
Note: Only perform concrete repair work above top of deck and bridge railing transition work with the Staging shown.



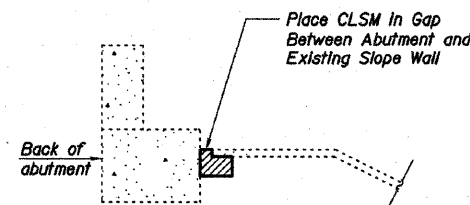
**STAGE II TRAFFIC AND CONSTRUCTION**

(Looking Stations Ahead)

Note: Only perform concrete repair work above top of deck and bridge railing transition work with the Staging shown.



**SECTION THRU CONCRETE SLOPEWALL**



**DETAIL A**

**STAGING DIAGRAM AND BILL OF MATERIAL**

**LAKE MANTENO RD. OVER I-57**

**F.A.I. RTE. 57 - SEC. (46-1,2)RS-3&I**

**KANKAKEE COUNTY**

**STA. 697+99.50**

**S.N. 046-0084**

REVISOR SHEET 5-26-10

SHEET NO. S17	F.A.I. RTE.	SECTION	COUNTY	TOTAL SHEETS	SHEET NO.
	57	(46-1,2)RS-3&I	KANKAKEE	115	42
S27 SHEETS			CONTRACT NO. 66608		
FED. ROAD DIST. NO. 7 ILLINOIS FED. AID PROJECT					

**Baker**