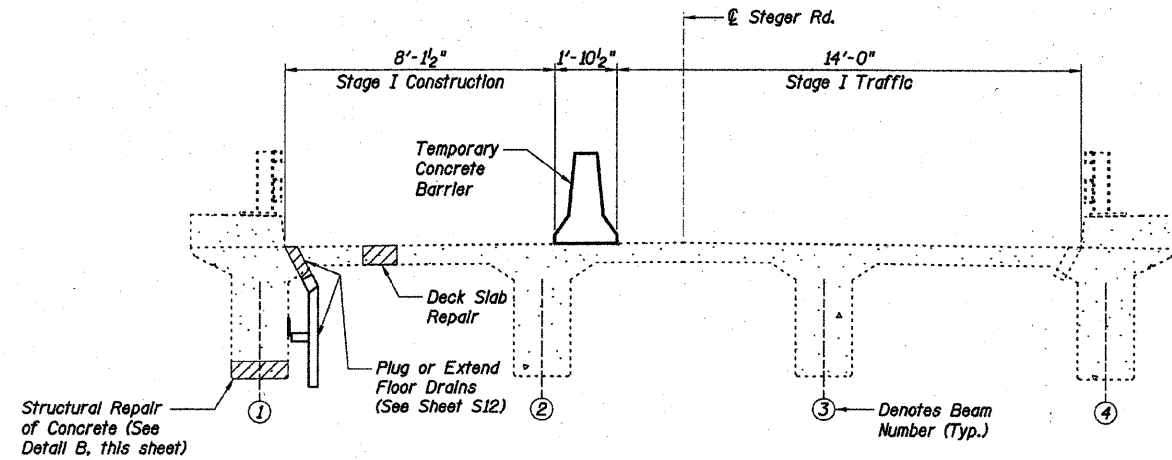
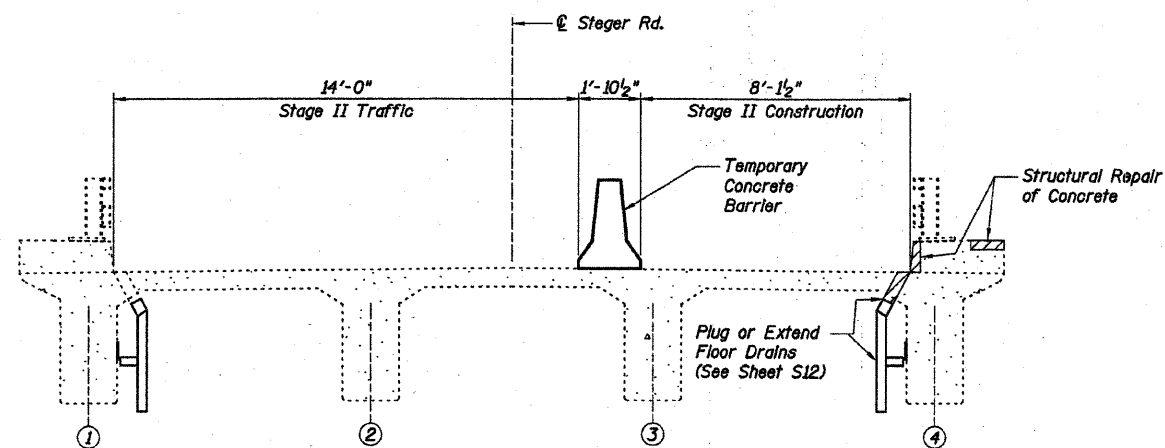


STATE OF ILLINOIS  
DEPARTMENT OF TRANSPORTATION



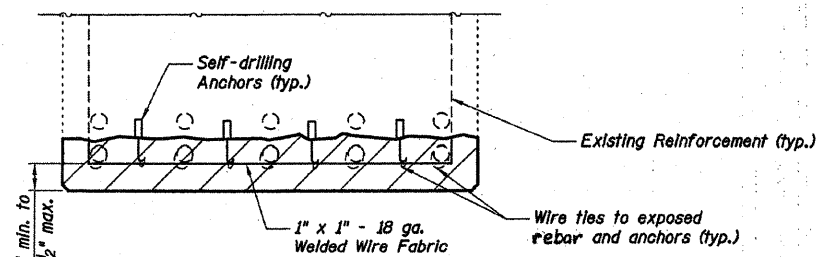
**STAGE I TRAFFIC AND CONSTRUCTION**

Note: Only perform concrete repair work above top of deck and bridge railing transition work with the Staging shown. (Looking Stations Ahead)

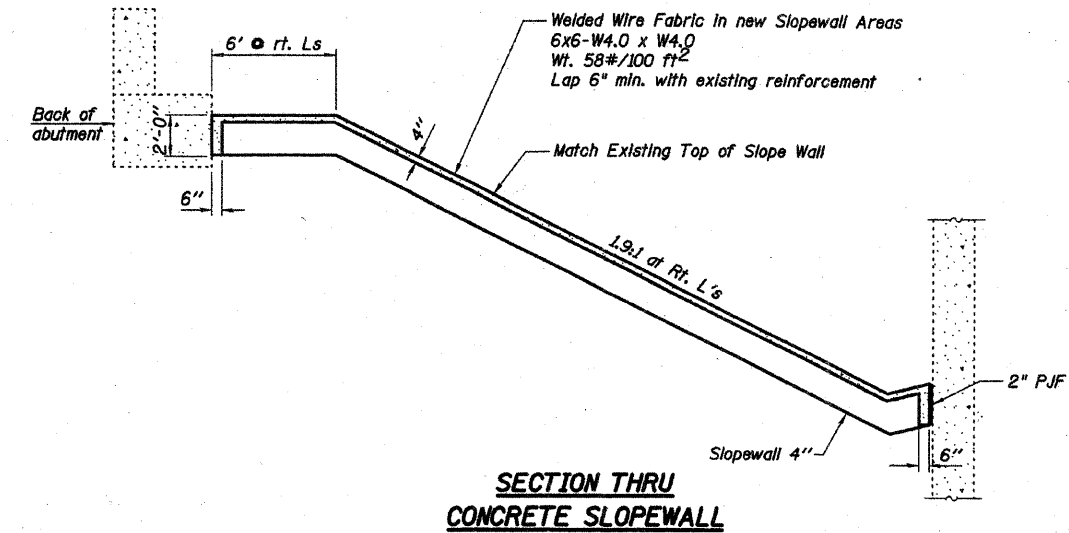


**STAGE II TRAFFIC AND CONSTRUCTION**

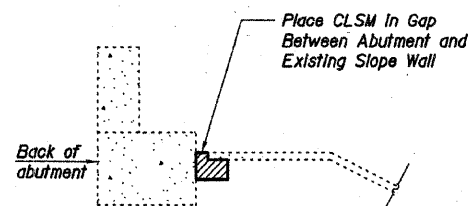
Note: Only perform concrete repair work above top of deck and bridge railing transition work with the Staging shown. (Looking Stations Ahead)



**DETAIL B**



**SECTION THRU CONCRETE SLOEWALL**



**DETAIL A**

**TOTAL BILL OF MATERIAL**

ITEM	UNIT	SUPER-STRUCTURE QUANTITY	SUBSTRUCTURE QUANTITY		TOTAL QUANTITY
			PIERS	ABUTMENTS	
Slope Wall Removal	Sq Yd	0	0	134	134
Slope Wall 4 Inch	Sq Yd	0	0	134	134
Controlled Low-Strength Material	Cu Yd	0	0	4	4
Plug Existing Deck Drains	Each	8	0	0	8
Cleaning and Painting Exposed Rebar	Sq Ft	25	0	0	25
Structural Repair of Concrete (Depth Equal to or Less Than 5 Inches)	Sq Ft	7	11	2	20
Floor Drain Extension	Each	16	0	0	16
Deck Slab Repair (Full Depth, Type I)	Sq Yd	1	0	0	1

**STAGING DIAGRAM AND BILL OF MATERIAL**

**STEGER ROAD OVER I-57**  
**F.A.I. RTE. 57 - SEC. (46-1,2)RS-3&I**  
**KANKAKEE COUNTY**  
**STA. 815+16.50**  
**S.N. 046-0083**

REVISOR'S MARK: REVISED SHEET 5-26-10

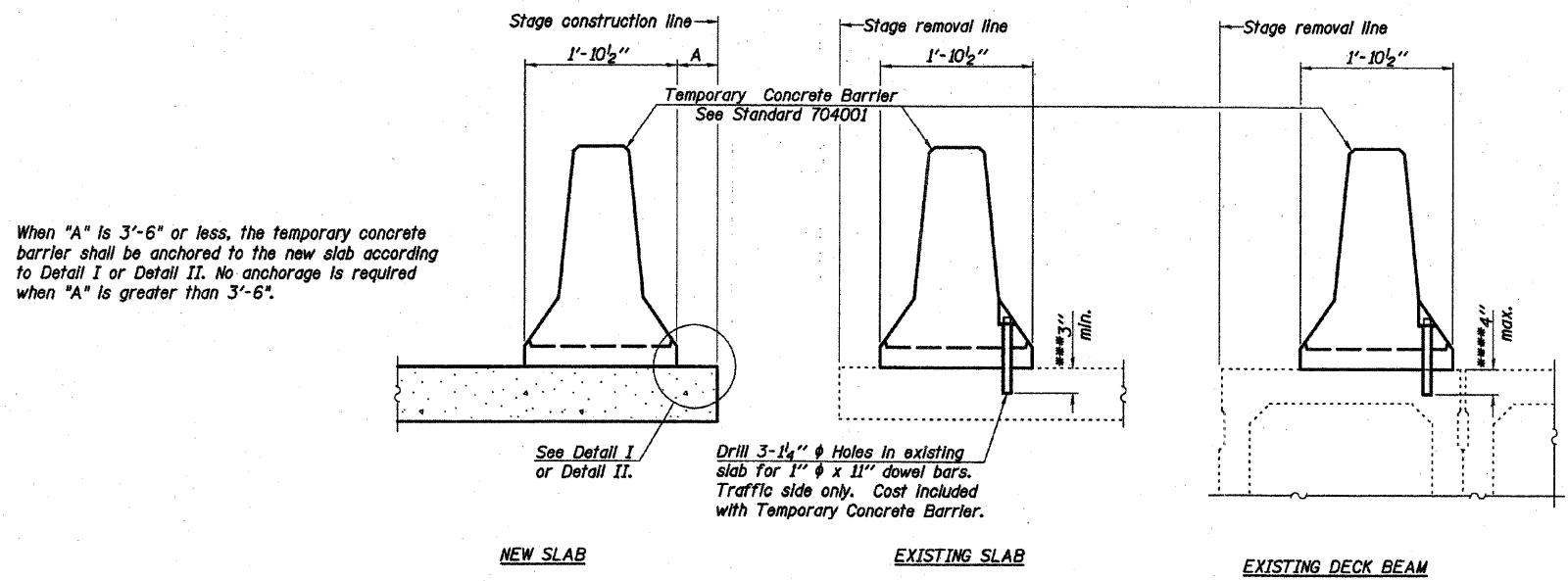
SHEET NO. S10	F.A.I. RTE. 57	SECTION (46-1,2)RS-3&I	COUNTY KANKAKEE	TOTAL SHEETS 115	SHEET NO. 35
S27 SHEETS			CONTRACT NO. 66608		
FED. ROAD DIST. NO. 7 ILLINOIS FED. AID PROJECT					

**Baker**

I:\1972\vol13.0 deliverables\3.3 structure\drawings\final\B2 0083staging.dgn

DESIGNED:	GWG
CHECKED:	KPZ
DRAWN:	MAW
CHECKED:	KPZ

STATE OF ILLINOIS  
DEPARTMENT OF TRANSPORTATION



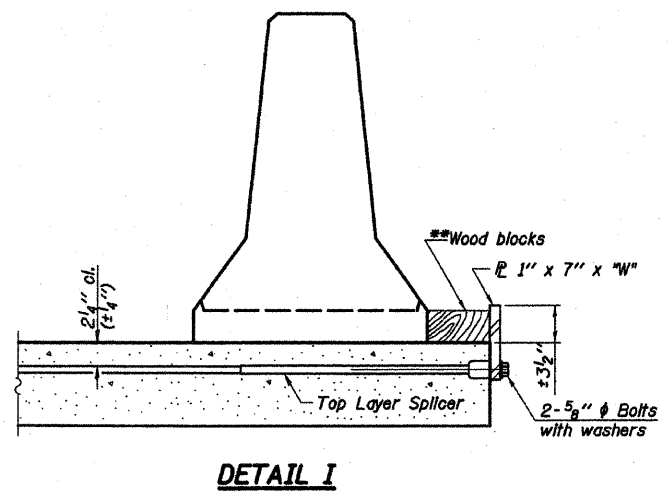
SECTIONS THRU SLAB OR DECK BEAM

**NOTES**

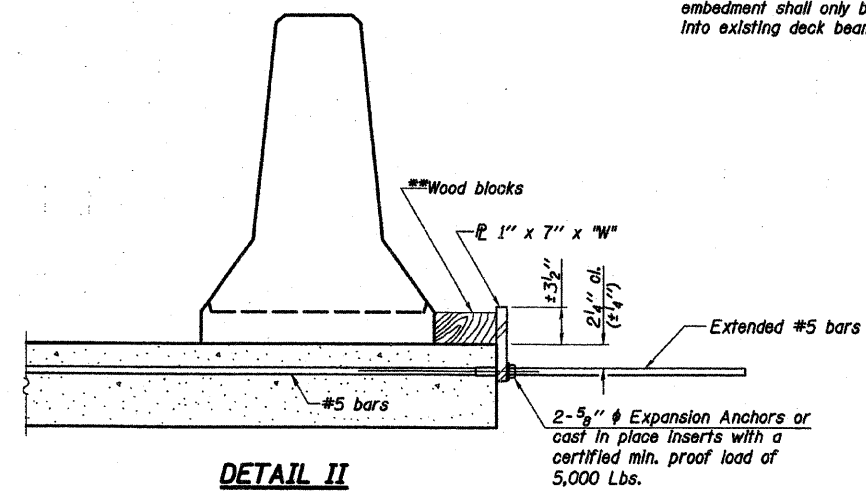
Detail I - With Bar Splicer or Couplers:  
Connect one (1) 1"x7"x10" steel  $\bar{r}$  to the top layer of couplers with 2-5/8"  $\phi$  bolts screwed to coupler at approximate  $\bar{c}$  of each barrier panel.

Detail II - With Extended Reinforcement Bars:  
Connect one (1) 1"x7"x10" steel  $\bar{r}$  to the concrete slab or concrete wearing surface with 2-5/8"  $\phi$  Expansion Anchors or cast in place inserts spaced between the top layer of reinforcement at approximate  $\bar{c}$  of each barrier panel.

Cost of anchorage is included with Temporary Concrete Barrier. The 1" x 7" x 10" plate shall not be removed until stage II construction forms and all reinforcement bars are in place and the concrete is ready to be placed.



DETAIL I



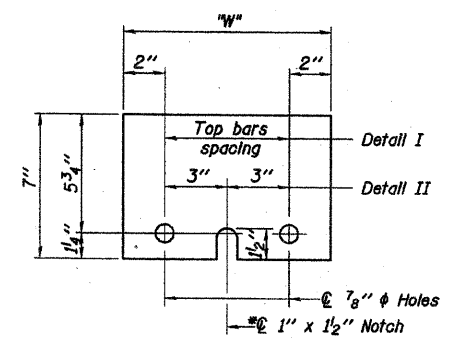
DETAIL II

\*\* Wood blocks may be omitted when required to provide minimum stage traffic lane width. When the wood blocks are omitted, the concrete barrier shall be in direct contact with the steel retainer plate.

"W" = Top bars spacing + 4"

\*\*\* Dimension shown is minimum required embedment into concrete. If hot-mix asphalt wearing surface is present, minimum embedment shall be in addition to wearing surface depth.

\*\*\*\* If existing deck beam is to remain in place after stage construction, embedment shall only be into wearing surface and not into existing deck beam concrete.



STEEL RETAINER  $\bar{r}$  1" x 7" x 10"  
\* Required only with Detail II

**TEMPORARY CONCRETE BARRIER  
FOR STAGE CONSTRUCTION  
STEGER ROAD OVER I-57  
F.A.I. RTE. 57 - SEC. (46-1,2)RS-3&I  
KANKAKEE COUNTY  
STA. 815+16.50  
S.N. 046-0083**

REVISOR SHEET 5-26-10

SHEET NO. S11	F.A.I. RTE.	SECTION	COUNTY	TOTAL SHEETS	SHEET NO.
	57	(46-1,2)RS-3&I	KANKAKEE	115	36
S27 SHEETS	CONTRACT NO. 66608				
FED. ROAD DIST. NO. 7 ILLINOIS FED. AID PROJECT					

**Baker**

I:\Projects\11-1-09\11-1-09.dwg 3.3 structure\drawings\final\11-1-09 0083tempbarrier.dgn

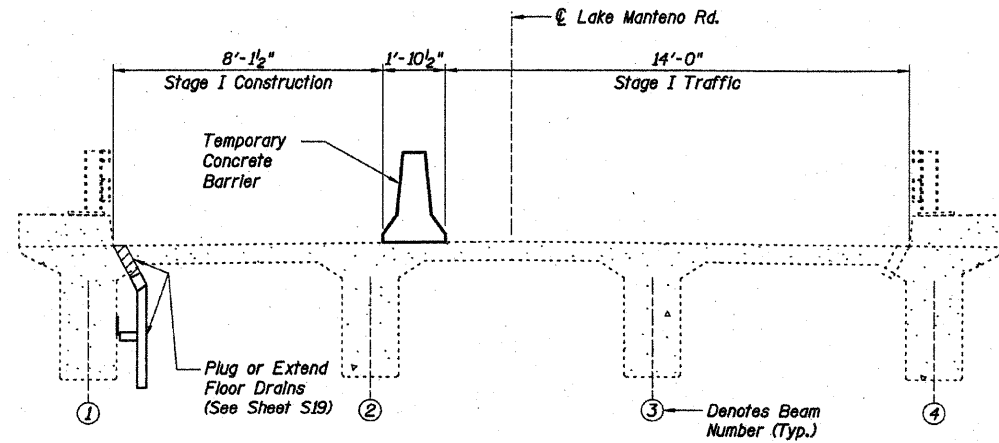
DESIGNED: GWG  
CHECKED: KPZ  
DRAWN: MAN  
CHECKED: KPZ

R-27

11-1-09

**TOTAL BILL OF MATERIAL**

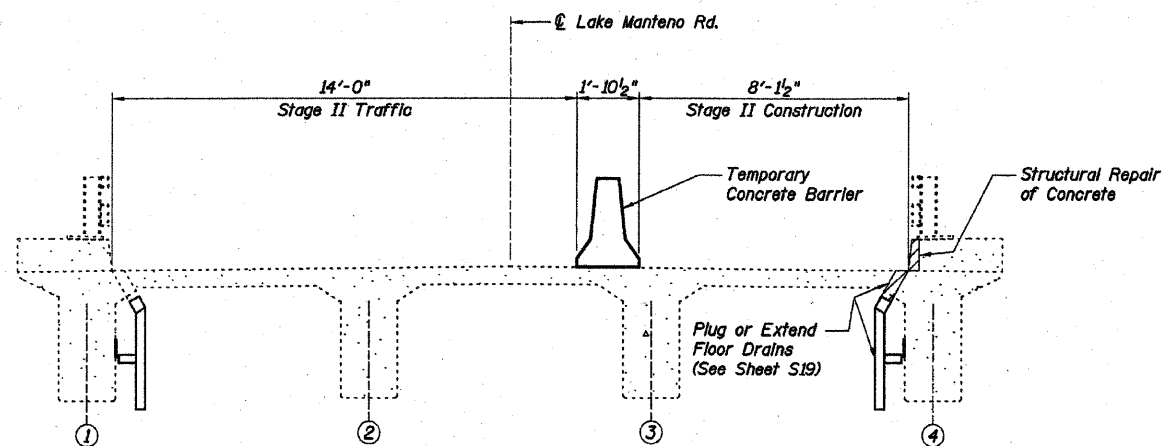
ITEM	UNIT	SUPER-STRUCTURE QUANTITY	SUBSTRUCTURE QUANTITY		TOTAL QUANTITY
			PIERS	ABUTMENTS	
Slope Wall Removal	Sq Yd	0	0	122	122
Slope Wall 4 Inch	Sq Yd	0	0	122	122
Controlled Low-Strength Material	Cu Yd	0	0	7	7
Plug Existing Deck Drains	Each	8	0	0	8
Cleaning and Painting Exposed Rebar	Sq Ft	45	0	0	45
Structural Repair of Concrete (Depth Equal to or Less Than 5 Inches)	Sq Ft	1	25	1	27
Floor Drain Extension	Each	16	0	0	16
Steel Railing	Ft	2	0	0	2



**STAGE I TRAFFIC AND CONSTRUCTION**

(Looking Stations Ahead)

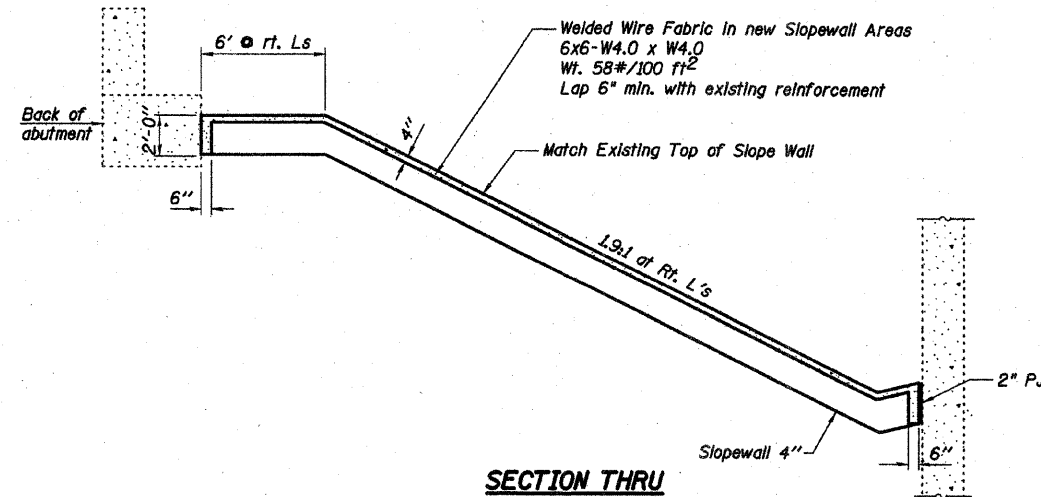
Note: Only perform concrete repair work above top of deck and bridge railing transition work with the Staging shown.



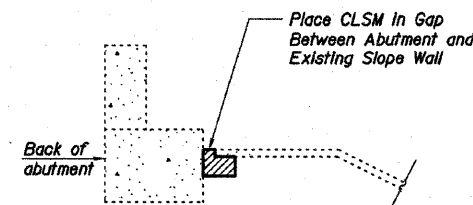
**STAGE II TRAFFIC AND CONSTRUCTION**

(Looking Stations Ahead)

Note: Only perform concrete repair work above top of deck and bridge railing transition work with the Staging shown.



**SECTION THRU CONCRETE SLOPEWALL**



**DETAIL A**

**STAGING DIAGRAM AND BILL OF MATERIAL**

**LAKE MANTENO RD. OVER I-57**

**F.A.I. RTE. 57 - SEC. (46-1,2)RS-3&I**

**KANKAKEE COUNTY**

**STA. 697+99.50**

**S.N. 046-0084**

REVISOR SHEET 5-26-10

SHEET NO. S17	F.A.I. RTE.	SECTION	COUNTY	TOTAL SHEETS	SHEET NO.
	57	(46-1,2)RS-3&I	KANKAKEE	115	42
S27 SHEETS			CONTRACT NO. 66608		
FED. ROAD DIST. NO. 7 ILLINOIS FED. AID PROJECT					

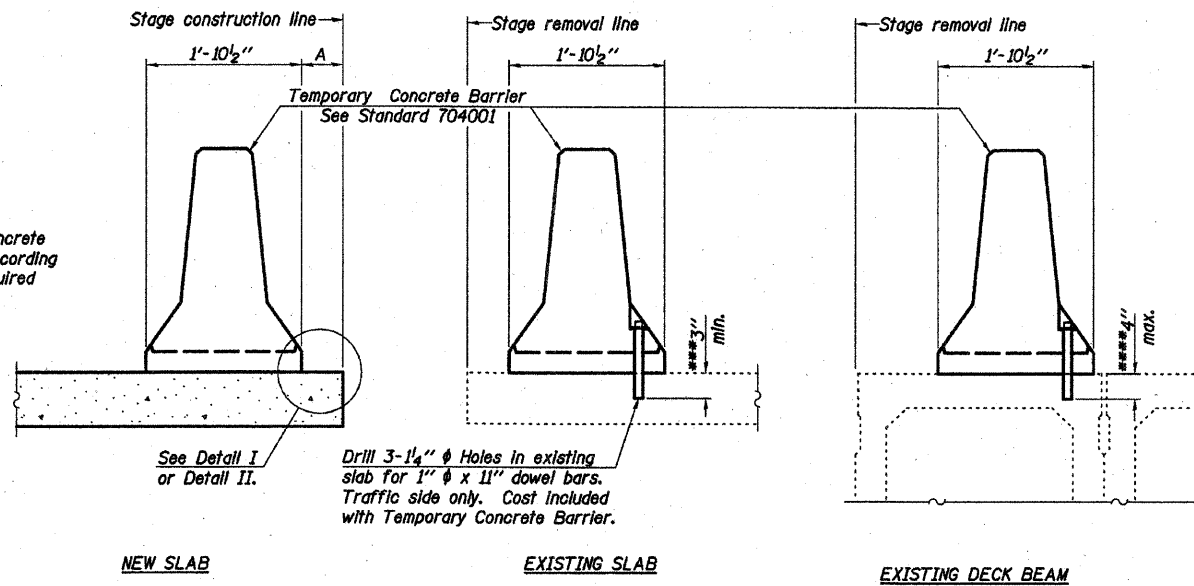
**Baker**

D:\19772\_wol\3.0 deliverables\3.3 structure\drawings\find\c2 0084staging.dgn

DESIGNED:	GWG
CHECKED:	KPZ
DRAWN:	MAH
CHECKED:	KPZ

STATE OF ILLINOIS  
DEPARTMENT OF TRANSPORTATION

When "A" is 3'-6" or less, the temporary concrete barrier shall be anchored to the new slab according to Detail I or Detail II. No anchorage is required when "A" is greater than 3'-6".



SECTIONS THRU SLAB OR DECK BEAM

NOTES

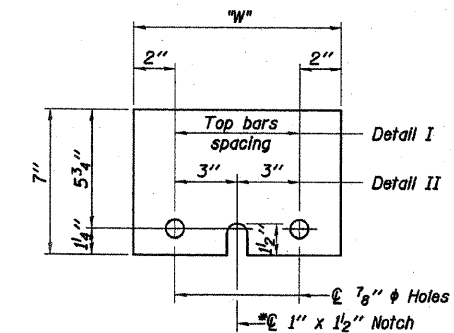
Detail I - With Bar Splicer or Couplers:  
Connect one (1) 1"x7"x10" steel  $\bar{L}$  to the top layer of couplers with 2-5/8"  $\phi$  bolts screwed to coupler at approximate  $\bar{C}$  of each barrier panel.

Detail II - With Extended Reinforcement Bars:  
Connect one (1) 1"x7"x10" steel  $\bar{L}$  to the concrete slab or concrete wearing surface with 2-5/8"  $\phi$  Expansion Anchors or cast in place inserts spaced between the top layer of reinforcement at approximate  $\bar{C}$  of each barrier panel.

Cost of anchorage is included with Temporary Concrete Barrier. The 1" x 7" x 10" plate shall not be removed until stage II construction forms and all reinforcement bars are in place and the concrete is ready to be placed.

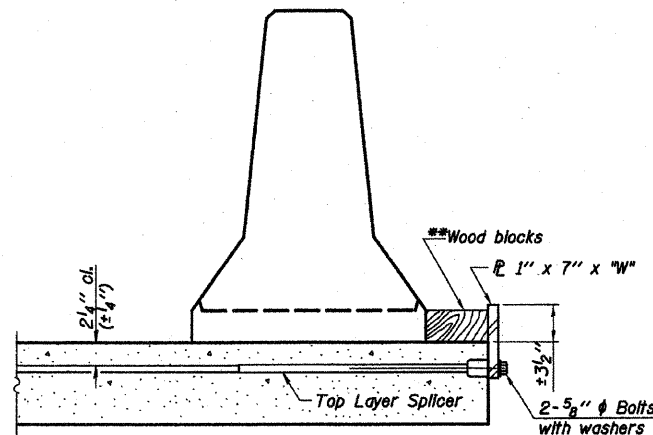
\*\*\* Dimension shown is minimum required embedment into concrete. If hot-mix asphalt wearing surface is present, minimum embedment shall be in addition to wearing surface depth.

\*\*\*\* If existing deck beam is to remain in place after stage construction, embedment shall only be into wearing surface and not into existing deck beam concrete.

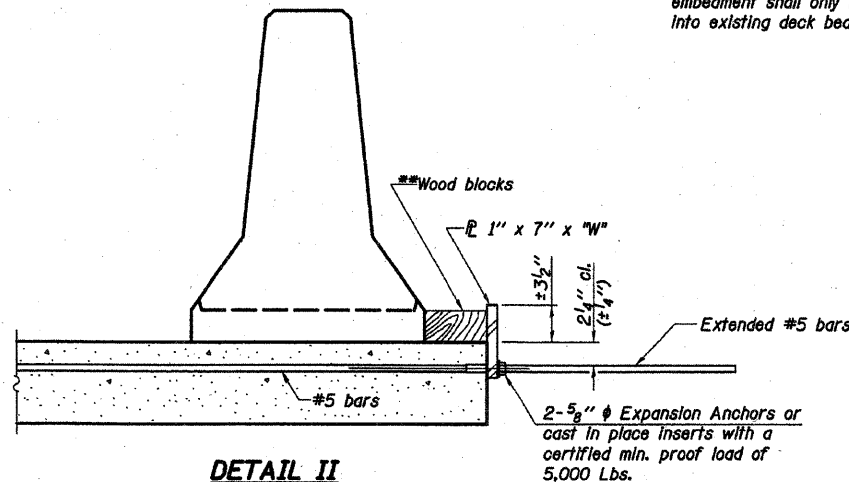


STEEL RETAINER  $\bar{L}$  1" x 7" x 10"

\* Required only with Detail II



DETAIL I



DETAIL II

\*\* Wood blocks may be omitted when required to provide minimum stage traffic lane width. When the wood blocks are omitted, the concrete barrier shall be in direct contact with the steel retainer plate.

"W" = Top bars spacing + 4"

TEMPORARY CONCRETE BARRIER  
FOR STAGE CONSTRUCTION  
LAKE MANTENO RD. OVER I-57  
F.A.I. RTE. 57 - SEC. (46-1,2)RS-3&I  
KANKAKEE COUNTY  
STA. 697+99.50  
S.N. 046-0084

REVISOR SHEET 5-26-10

SHEET NO.	F.A.I. RTE.	SECTION	COUNTY	TOTAL SHEETS	SHEET NO.
S18	57	(46-1,2)RS-3&I	KANKAKEE	115	43
S27 SHEETS			CONTRACT NO. 66608		
FED. ROAD DIST. NO. 7 ILLINOIS FED. AID PROJECT					

Baker

P:\18772\_wal\3.0 deliverables\3.3 structure\drawings\Final\03 0084tempbarrier.dgn 4/17/2010

DESIGNED:	GWS
CHECKED:	KPZ
DRAWN:	MAN
CHECKED:	KPZ

R-27

11-1-09