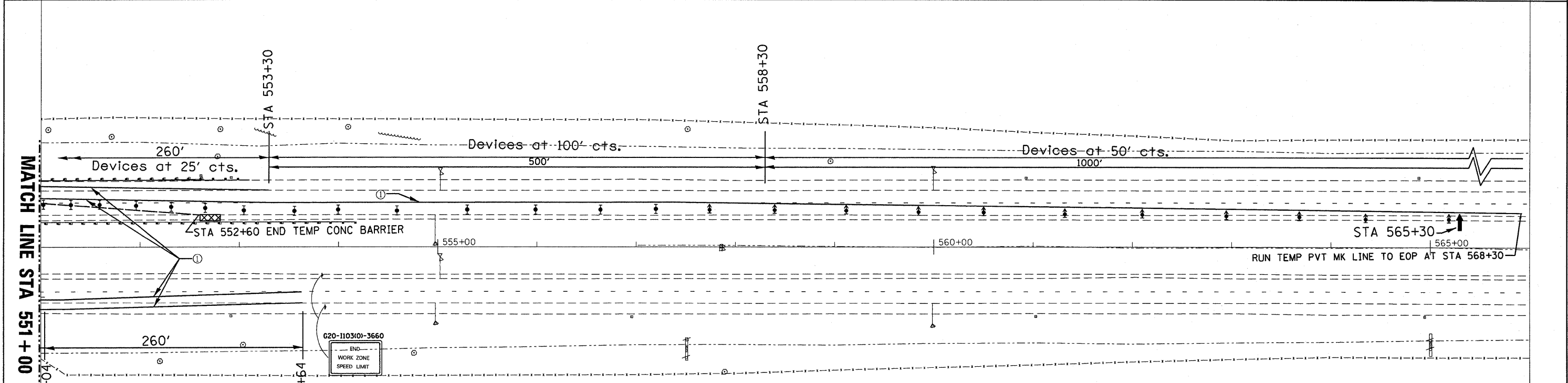
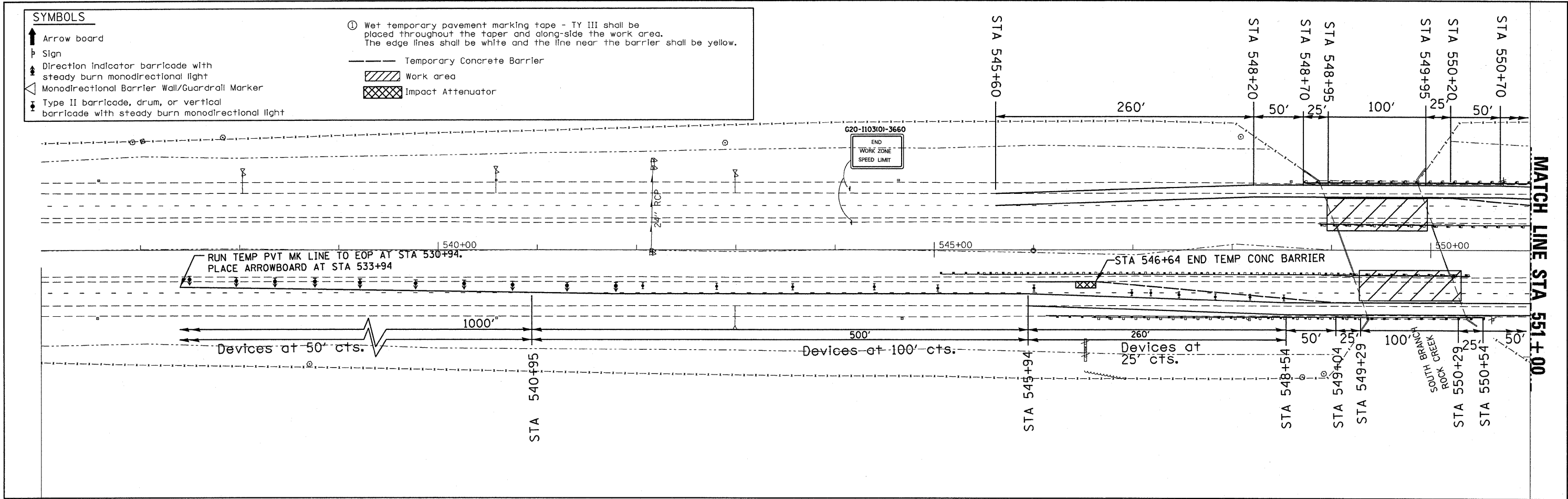


SYMBOLS

- ↑ Arrow board
- ⊥ Sign
- ▲ Direction Indicator barricade with steady burn monodirectional light
- ◁ Monodirectional Barrier Wall/Guardrail Marker
- ⊕ Type II barricade, drum, or vertical barricade with steady burn monodirectional light

- ① Wet temporary pavement marking tape - TY III shall be placed throughout the taper and along-side the work area. The edge lines shall be white and the line near the barrier shall be yellow.
- Temporary Concrete Barrier
- ▨ Work area
- ▩ Impact Attenuator



STAGE CONSTRUCTION NOTES:
 PRESTAGE I CONSTRUCTION
 USING TC&P STD 701401, PLACE HMA BASE COURSE, 9" (FOR STAGE CONSTRUCTION)

STAGE I CONSTRUCTION:
 1. REMOVE MEDIAN PORTION OF HMA SURF CSE ON BRIDGES
 2. PLACE THE CONCRETE LATEX OVERLAY ON BRIDGES

SEE STANDARD 701402 FOR DETAILS NOT SHOWN

ANY SIGNS SHOWN ON THIS SHEET WHICH CONFLICT WITH TC&P STD 701401 DURING THE WEEK SHALL BE COVERED UP

FILE NAME =	USER NAME = braboyco	DESIGNED -	REVISED -	STATE OF ILLINOIS DEPARTMENT OF TRANSPORTATION	STAGE I CONSTRUCTION FOR SN 046-0018 AND SN 046-0019	F.A.I. RTE.	SECTION	COUNTY	TOTAL SHEETS	SHEET NO.	
c:\pw_work\p1\dot\braboyco\dms30564\EP0	404-ah-t-p1npr-F50.DGN	DRAWN -	REVISED -			57	(46-1,2)RS-3 & I	KANKAKEE	115	24	
	PLOT SCALE = 50.0000' / IN.	CHECKED -	REVISED -			CONTRACT NO. 66608					
	PLOT DATE = Mar 25, 2010 - 12:12:48 PM	DATE -	REVISED -			ILLINOIS FED. AID PROJECT					