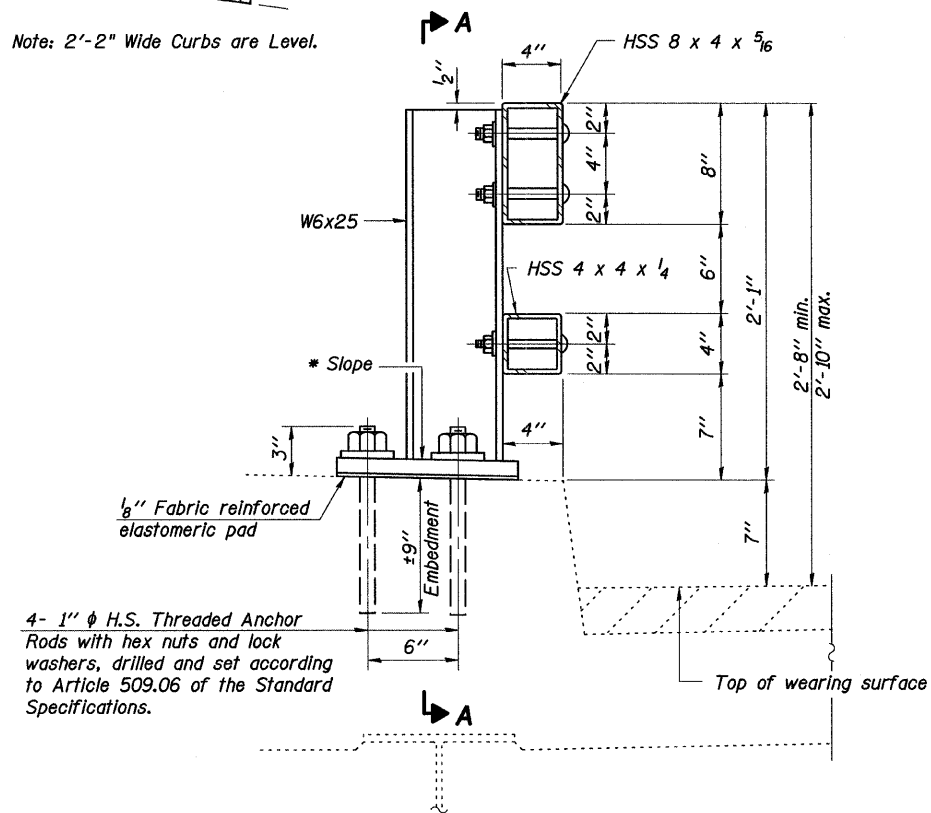


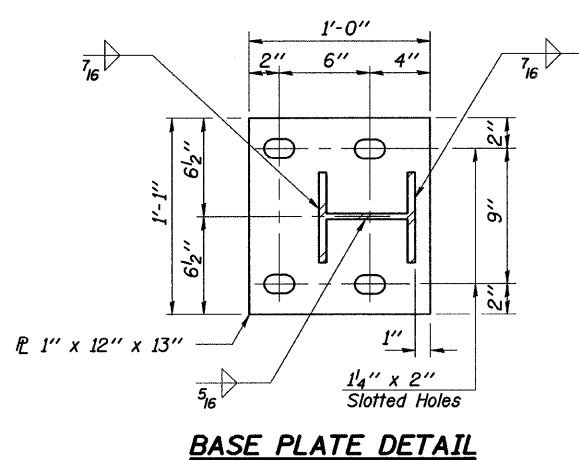
STATE OF ILLINOIS
DEPARTMENT OF TRANSPORTATION

* Cut bottom end of post to curb slope. (3'-2" Curbs Only)

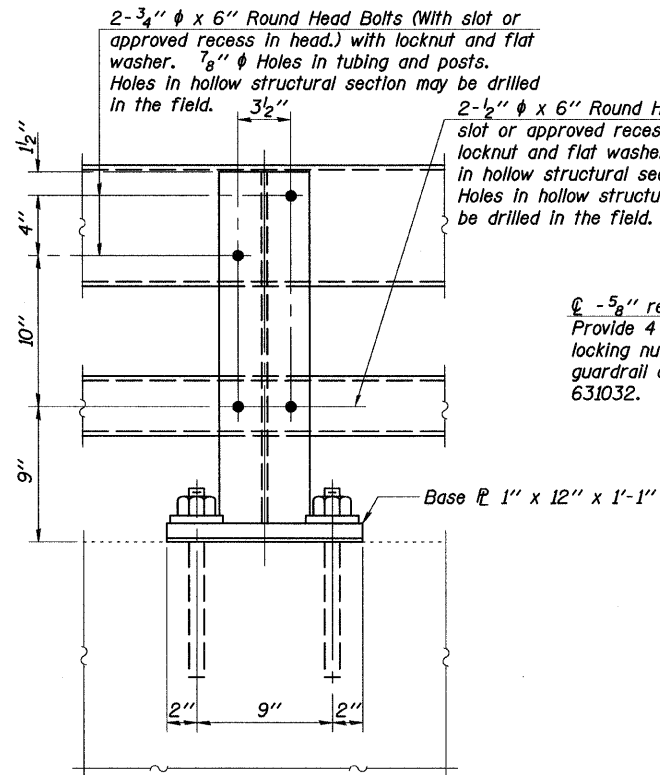
Note: 2'-2" Wide Curbs are Level.



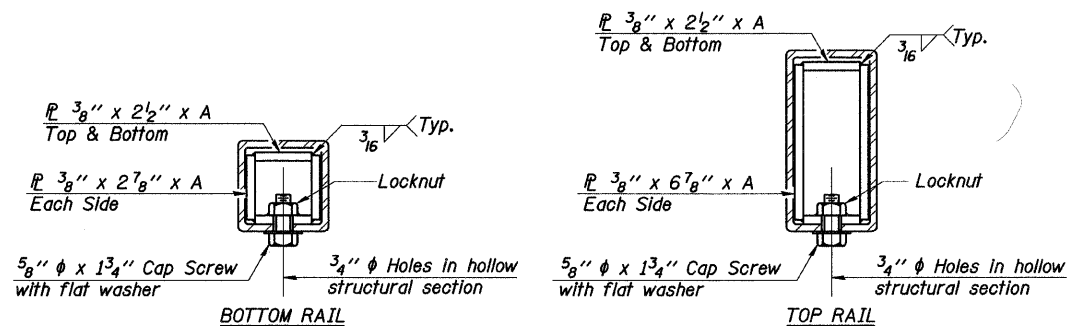
SECTION AT RAIL POST



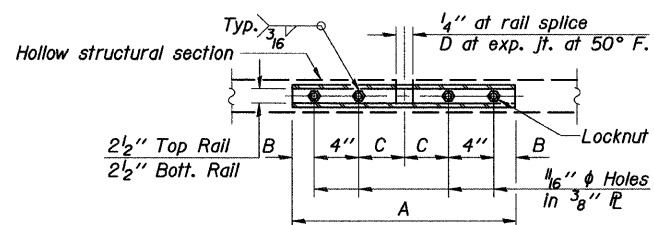
BASE PLATE DETAIL



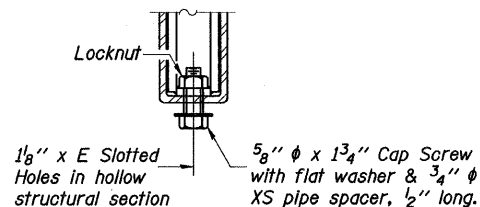
SECTION A-A



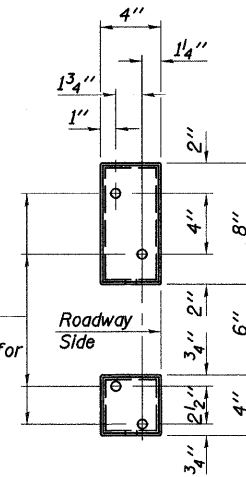
SECTIONS AT RAIL SPLICE



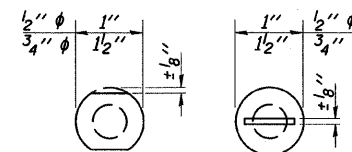
PLAN-BOTT. SPLICE TYPICAL



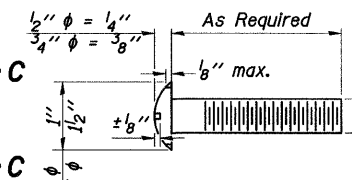
RAIL SPLICE CONNECTION AT EXPANSION JT.



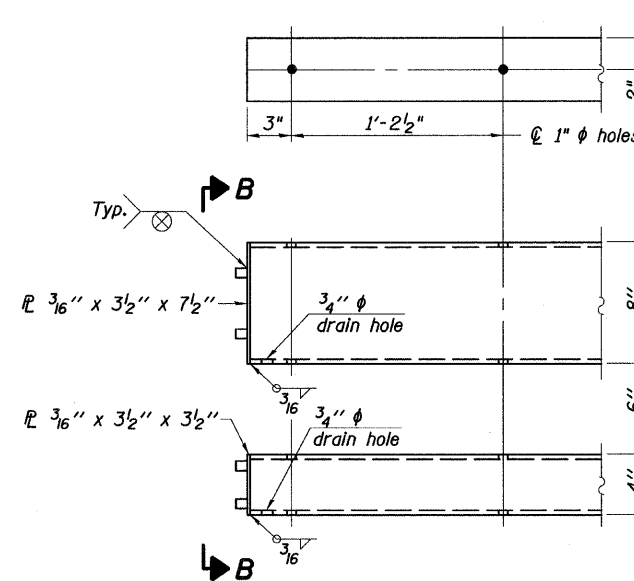
VIEW B-B



VIEW C-C



DETAIL OF 1/2" φ & 3/4" φ ROUND HEAD BOLTS



END OF RAIL DETAILS

Notes:

- All field drilled holes shall be coated with an approved zinc rich paint before erection.
- Posts shall not be located closer than 1'-3" to an existing bridge expansion joint or end of bridge.
- Steel Bridge Rail expansion joint shall be provided between any two (2) posts which span a bridge expansion joint. Bolts located at expansion joint shall be provided with locknuts and shall be tightened only to a point that will allow ralling movement.
- Provide one 1/8" and two 1/16" steel shims for 25% of the posts. Shims shall be similar to base plates in size and holes.
- All steel rail elements shall be galvanized according to Article 509.05 of the Standard Specifications.
- See Sheets S4 and S5 for Rail Post Spacing.

SPLICE DIMENSIONS

T	D	A	B	C	E
≤4"	2 1/2"	1'-8"	2"	4"	2 1/2"
>4" ≤6 1/2"	3 3/4"	2'-0"	2 1/2"	5 1/2"	3 1/2"
>6 1/2" ≤9"	5"	2'-4"	3 1/2"	6 1/2"	9"
>9" ≤13"	7"	2'-10"	4 1/2"	8 1/2"	11"
Rail Splice	1/4"	1'-8"	2"	4"	—

Note: T = 1 3/4"

BILL OF MATERIAL

Item	Unit	Quantity
Steel Railing, Type 2399	Foot	396

STEEL RAILING, TYPE 2399
I-57 OVER ROCK CREEK
F.A.I. RTE. 57 - SEC. (46-1,2)RS-3&I
KANKAKEE COUNTY
STA. 549+60.00
S.N. 046-0018 & S.N. 046-0019

SHEET NO. S6	F.A.I. RTE.	SECTION	COUNTY	TOTAL SHEETS	SHEET NO.
S27 SHEETS	57	(46-1,2)RS-3&I	KANKAKEE	115	31
			CONTRACT NO. 66608		
FED. ROAD DIST. NO. 7 ILLINOIS FED. AID PROJECT					

Baker

DESIGNED:	GWG
CHECKED:	KPZ
DRAWN:	NAM
CHECKED:	KPZ