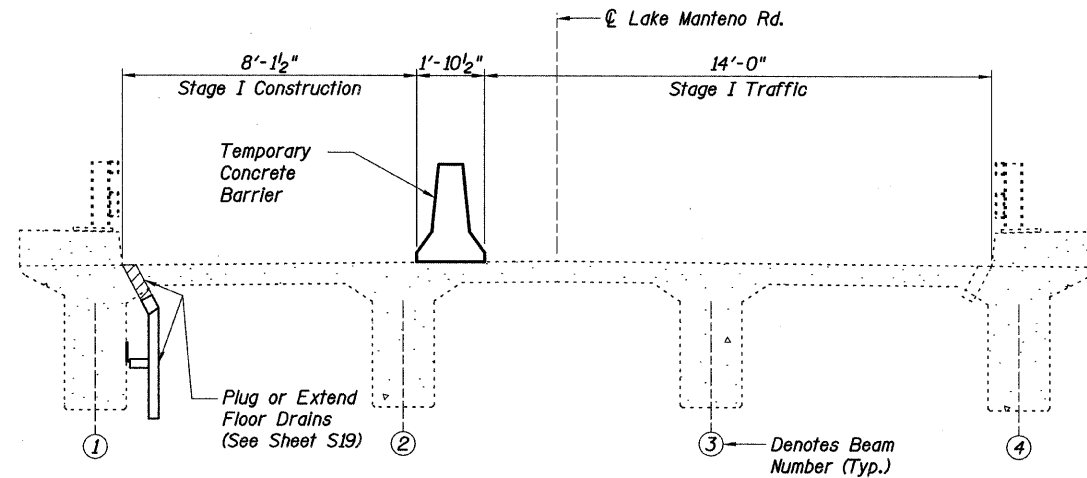


STATE OF ILLINOIS
DEPARTMENT OF TRANSPORTATION

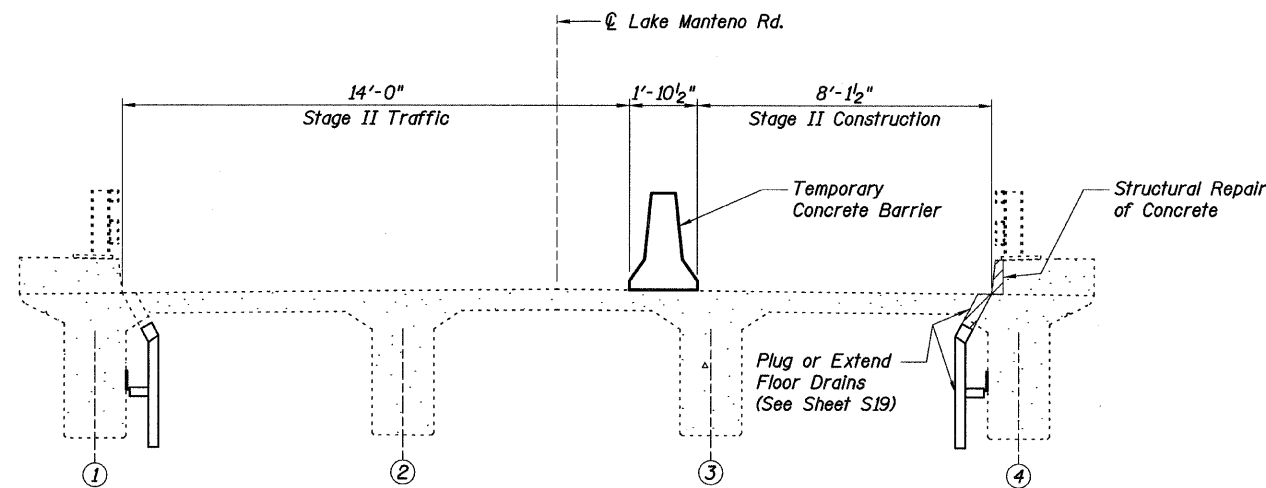
TOTAL BILL OF MATERIAL



STAGE I TRAFFIC AND CONSTRUCTION

(Looking Stations Ahead)

Note: Only perform concrete repair work above top of deck and bridge railing transition work with the Staging shown.

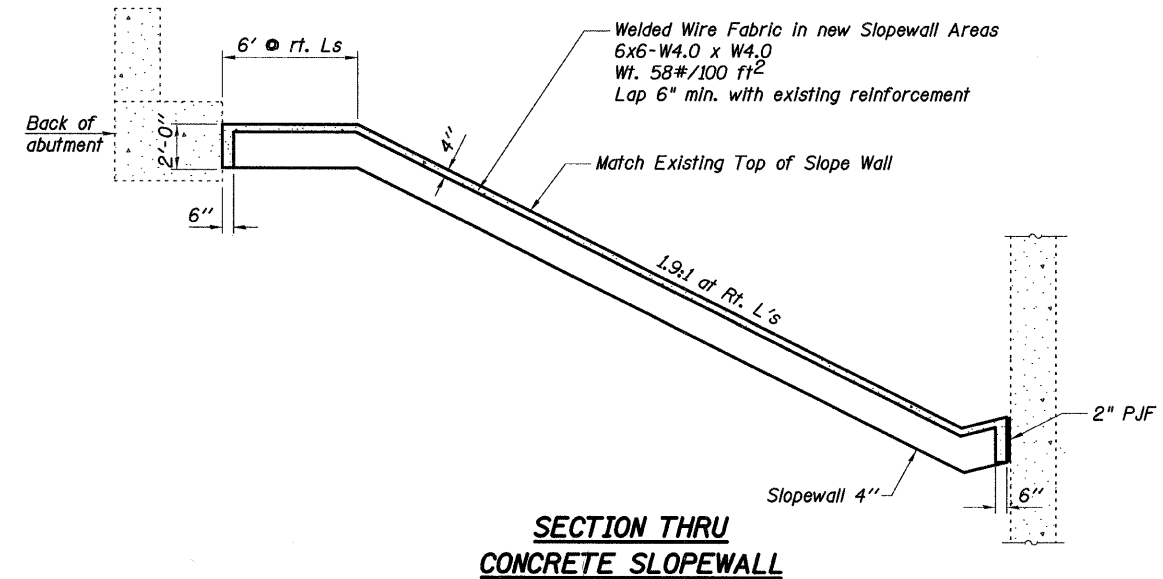


STAGE II TRAFFIC AND CONSTRUCTION

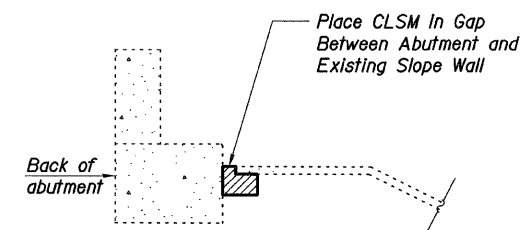
(Looking Stations Ahead)

Note: Only perform concrete repair work above top of deck and bridge railing transition work with the Staging shown.

ITEM	UNIT	SUPER-STRUCTURE QUANTITY	SUBSTRUCTURE QUANTITY		TOTAL QUANTITY
			PIERS	ABUTMENTS	
Slope Wall Removal	Sq Yd	0	0	122	122
Slope Wall 4 Inch	Sq Yd	0	0	122	122
Controlled Low-Strength Material	Cu Yd	0	0	7	7
Plug Existing Deck Drains	Each	8	0	0	8
Cleaning and Painting Exposed Rebar	Sq Ft	45	0	0	45
Structural Repair of Concrete (Depth Equal to or Less Than 5 Inches)	Sq Ft	1	25	1	27
Floor Drain Extension	Each	16	0	0	16
Steel Railing	Ft	2	0	0	2



**SECTION THRU
CONCRETE SLOPEWALL**



DETAIL A

**STAGING DIAGRAM AND BILL OF MATERIAL
LAKE MANTENO RD. OVER I-57
F.A.I. RTE. 57 - SEC. (46-1,2)RS-3&I
KANKAKEE COUNTY
STA. 697+99.50
S.N. 046-0084**

SHEET NO. S17	F.A.I. RTE.	SECTION	COUNTY	TOTAL SHEETS	SHEET NO.
S27 SHEETS	57	(46-1,2)RS-3&I	KANKAKEE	115	42
			CONTRACT NO. 66608		
FED. ROAD DIST. NO. 7 ILLINOIS FED. AID PROJECT					

Baker

h:\1872_wol\3.0 deliverables\3.3 structure drawings\final\c2_0084staging.dgn 4/7/2010

DESIGNED:	GWG
CHECKED:	KPZ
DRAWN:	MAM
CHECKED:	KPZ