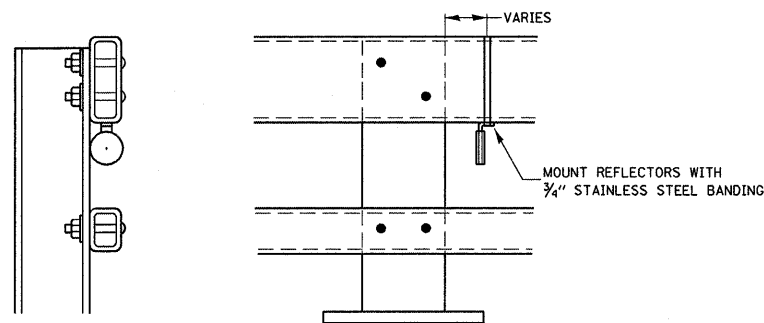


NOTES:

1. THE CONTRACTOR HAS THE OPTION OF USING EITHER THE LINE ON THE TEMPORARY CONCRETE BARRIER OR ON THE PAVEMENT.
2. THE COLOR OF THE REFLECTORS AND PAVEMENT/BARRIER MARKING LINE WILL VARY WITH STAGING AND SHALL MATCH THE EXISTING LINE IN THE WORK AREA.
3. THE COST OF THE REFLECTORS IS INCLUDED IN THE COST OF THE TEMPORARY CONCRETE BARRIER.



NOTES

1. REFLECTORS SHALL MEET THE REQUIREMENTS OF ARTICLE 1097.03 OF THE STANDARD SPECIFICATIONS.
2. FURNISHING AND INSTALLING THE COMPLETE REFLECTOR UNIT WILL BE PAID AT THE CONTRACT UNIT PRICE EACH FOR GUARD RAIL MARKERS.

**REFLECTOR MOUNTING
DETAIL FOR STEEL RAIL**

FILE NAME =	USER NAME = braboygc	DESIGNED -	REVISED -	STATE OF ILLINOIS DEPARTMENT OF TRANSPORTATION	DETAILS			F.A.I. RTE.	SECTION	COUNTY	TOTAL SHEETS	SHEET NO.
c:\pwork\pwork\braboygc\dms30564\det	braboygc	DRAWN -	REVISED -					57	146-1.21RS-3 & I	KANKAKEE	115	63
PLOT SCALE = 1250.0000' / IN.	CHECKED -	REVISED -	REVISED -		SCALE: _____ SHEET NO. ___ OF ___ SHEETS STA. _____ TO STA. _____			CONTRACT NO. 66608				
PLOT DATE = Mar 25, 2010 - 12:28:42 PM	DATE -	REVISED -	REVISED -		ILLINOIS FED. AID PROJECT							