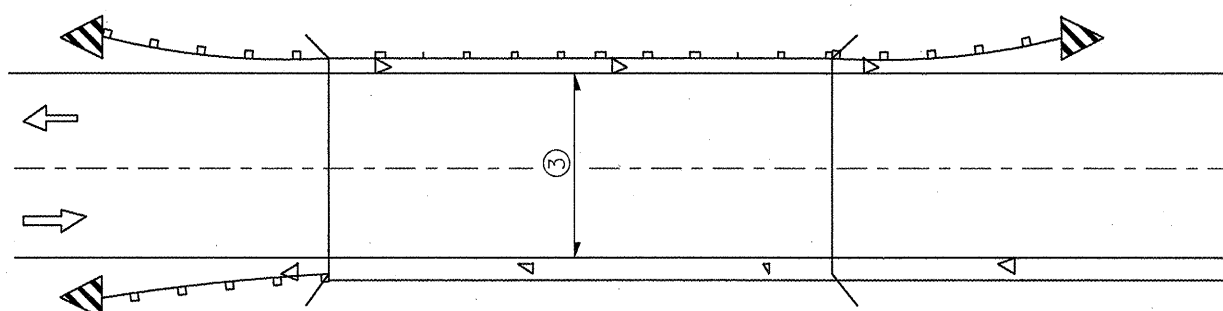


① Spacing 80 ft max. for first 400 ft or curve spacing shown in Standard 635001, whichever is less (min. 4 reflectors regardless of length).

② After 400 ft, transition to normal delineator spacing shown in Standard 635001, and continue as required.

ONE-WAY TRAFFIC



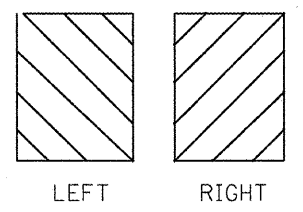
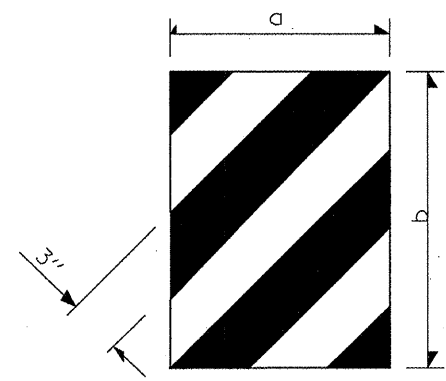
③ Bidirectional silver/silver should be used in lieu of monodirectional silver on both sides of two-lane bridges where the pavement is less than 24" wider than the pavement approaching the bridge.

◁ Monodirectional silver

▷ Monodirectional amber

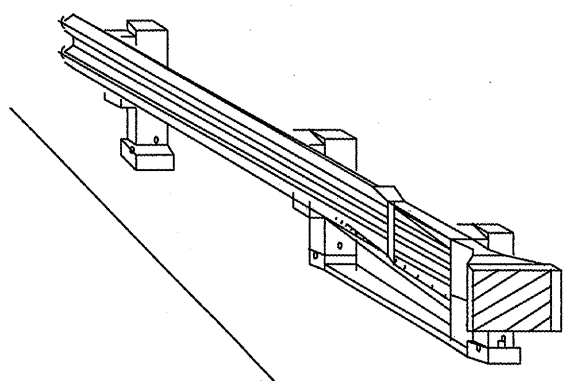
▴ Terminal Marker - Black/Yellow Left or Right as appropriate

TWO-WAY TRAFFIC



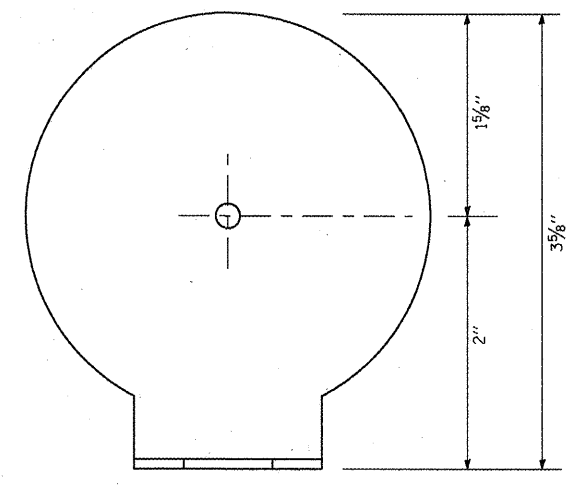
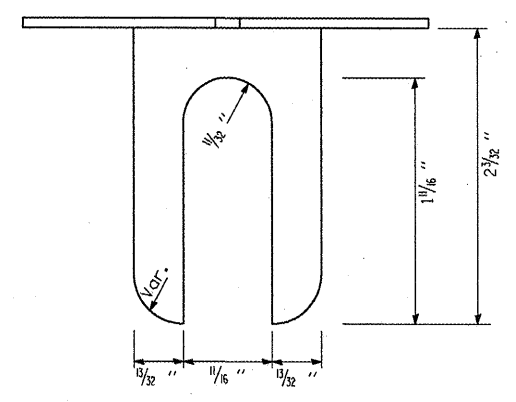
DIMENSION	CASE I	CASE II
a	*	450 (18)
b	*	406 (16)

* The width and height (a, b) of the terminal marker shall be within approximately 25 mm (1 inch) of the outer edge of the terminal end, with a minimum reflective area of 0.18 m² (288 sq. in.)

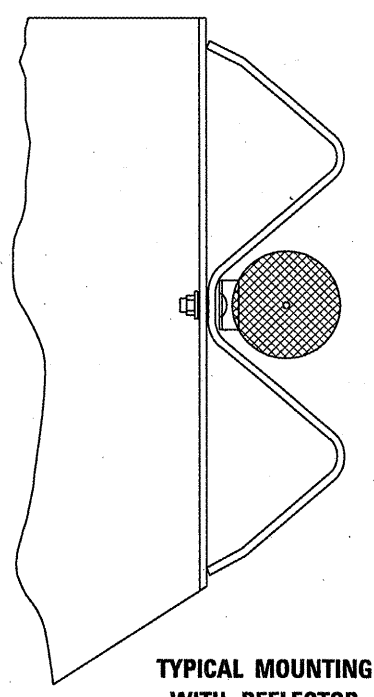


TERMINAL MARKER DETAILS
Color: Black / Yellow reflectorized

REFLECTOR AND
TERMINAL MARKER PLACEMENT

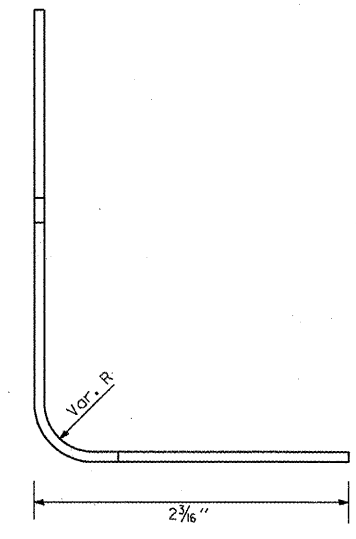


REFLECTOR MARKER TYPE A



TYPICAL MOUNTING WITH REFLECTOR

- NOTES:
- BRACKET IS TO BE FABRICATED FROM 12 GA. (MIN) STEEL GALVANIZED IN ACCORDANCE WITH AASHTO M III.
 - MIN. 3 REFLECTORS PER SIDE.
 - BRACKET "FOOT" SHALL BE PLACED BETWEEN THE BOLT HEAD AND THE PLATE WASHER (IF PRESENT).
 - ON THRIE BEAM RAIL, THE BRACKETS SHALL BE ATTACHED TO THE UPPER SPLICE BOLTS.
 - USE CRYSTAL COLOR, BI-DIRECTIONAL REFLECTORS USE AMBER (LEFT) AND CRYSTAL (RIGHT), MONODIRECTIONAL REFLECTORS ON INTERSTATES
 - ALL DIMENSIONS SHOWN ARE MINIMUM



REFLECTOR DETAIL