

F.A.S. RTE.	SECTION	COUNTY	TOTAL SHEETS	SHEET NO.
294	D3 PATCHNG 2011-3	LIVINGSTON	8	1
		ILLINOIS	CONTRACT NO. 66A32	

STATE OF ILLINOIS  
DEPARTMENT OF TRANSPORTATION  
DIVISION OF HIGHWAYS  
**PROPOSED  
HIGHWAY PLANS**

**FAS ROUTE 294 (O.R. 66)  
SECTION D3 PATCHING 2011-3**

**PAVEMENT PATCHING  
LIVINGSTON COUNTY**

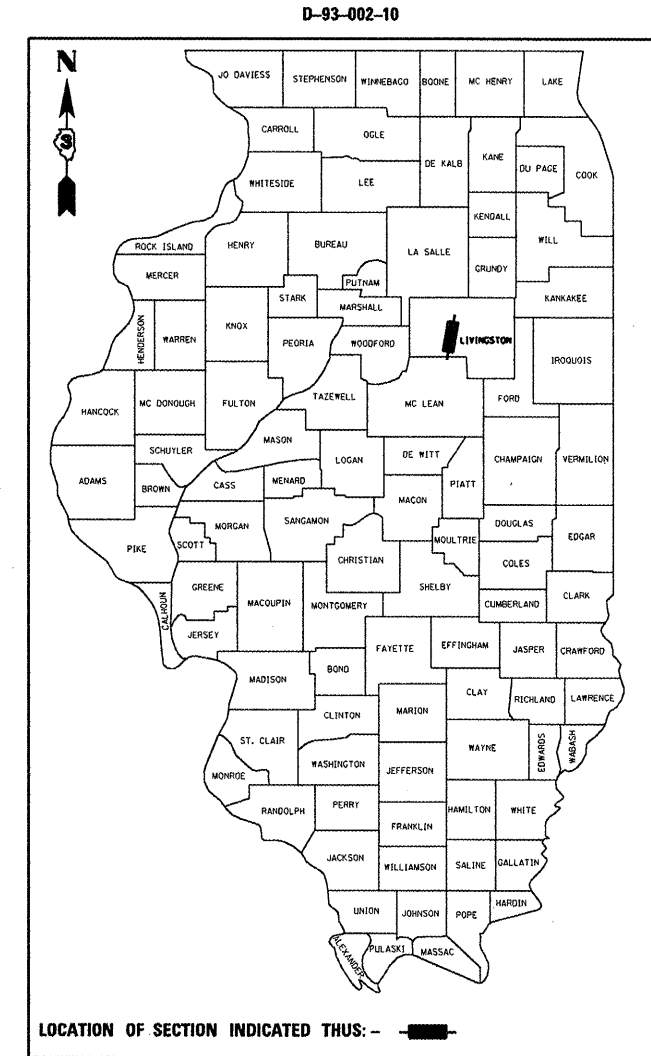
C-93-117-10

INDEX OF SHEETS

1. COVER SHEET
2. GENERAL NOTES
3. SUMMARY OF QUANTITIES
4. TYPICAL SECTION
5. PATCHNG SCHEDULE - NBL
- 6 - 7. PATCHNG SCHEDULE - SBL
8. CLASS B PATCHING DETAILS

STANDARDS

- |           |  |
|-----------|--|
| 000001-05 | STANDARD SYMBOLS, ABBREVIATIONS AND PATTERNS                               |
| 001006    | DECIMAL OF AN INCH AND OF A FOOT   |
| 420001-07 | PAVEMENT JOINTS  |
| 420601-05 | 24' (7.2 m) PCC PAVEMENT   |
| 420701-02 | PAVEMENT FABRIC  |
| 442101-07 | CLASS B PATCHES  |
| 701001-02 | OFF-ROAD OPERATIONS 2L, 2W, MORE THAN 15' (4.5 m) AWAY                     |
| 701006-03 | OFF-ROAD OPERATIONS 2L, 2W, 15' (4.5 m) TO 24" (600 mm) FROM PAVEMENT EDGE |
| 701301-03 | LANE CLOSURE, 2L, 2W, SHORT TIME OPERATIONS                                |
| 701311-03 | LANE CLOSURE, 2L, 2W, MOVING OPERATIONS - DAY ONLY                         |
| 701336-05 | LANE CLOSURE, 2L, 2W, WORK AREAS IN SERIES, FOR SPEEDS $\Delta$ 45 MPH     |
| 701901-01 | TRAFFIC CONTROL DEVICES  |



FUNCTIONAL CLASSIFICATION  
RURAL - MAJOR COLLECTOR  
FAS 294 (O.R. 66)  
2007 ADT 3300

STATE OF ILLINOIS  
DEPARTMENT OF TRANSPORTATION  
DIVISION OF HIGHWAYS

SUBMITTED 4/11 20 10

*George E. Ryan*  
DEPUTY DIRECTOR OF HIGHWAYS, REGION ENGINEER

May 7 20 10

*Scott E. Stitt P.E.*  
ACTING ENGINEER OF DESIGN AND ENVIRONMENT

May 7 20 10

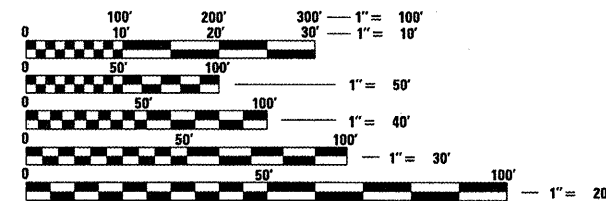
*Christine M. Reeder*  
DIRECTOR OF HIGHWAYS, CHIEF ENGINEER

**PRINTED BY THE AUTHORITY  
OF THE STATE OF ILLINOIS**



**BEGIN PROJECT  
IL RTE. 116 (PONTIAC)**

**END PROJECT  
McLEAN COUNTY LINE**



FULL SIZE PLANS HAVE BEEN PREPARED USING STANDARD ENGINEERING SCALES. REDUCED SIZED PLANS WILL NOT CONFORM TO STANDARD SCALES. IN MAKING MEASUREMENTS ON REDUCED PLANS, THE ABOVE SCALES MAY BE USED.

J.U.L.I.E.  
JOINT UTILITY LOCATION INFORMATION FOR EXCAVATION  
1-800-892-0123  
OR 811

**PROJECT ENGINEER: JOE KANNEL**  
**UNIT CHIEF: RON WOODSHANK**  
**TOWNSHIPS: PONTIAC, PIKE, EPPARDS POINT**  
**CONTRACT NO. 66A32**

GROSS LENGTH = 53328 FT. = 10.10 MILES  
NET LENGTH = 752 FT. = 0.142 MILES