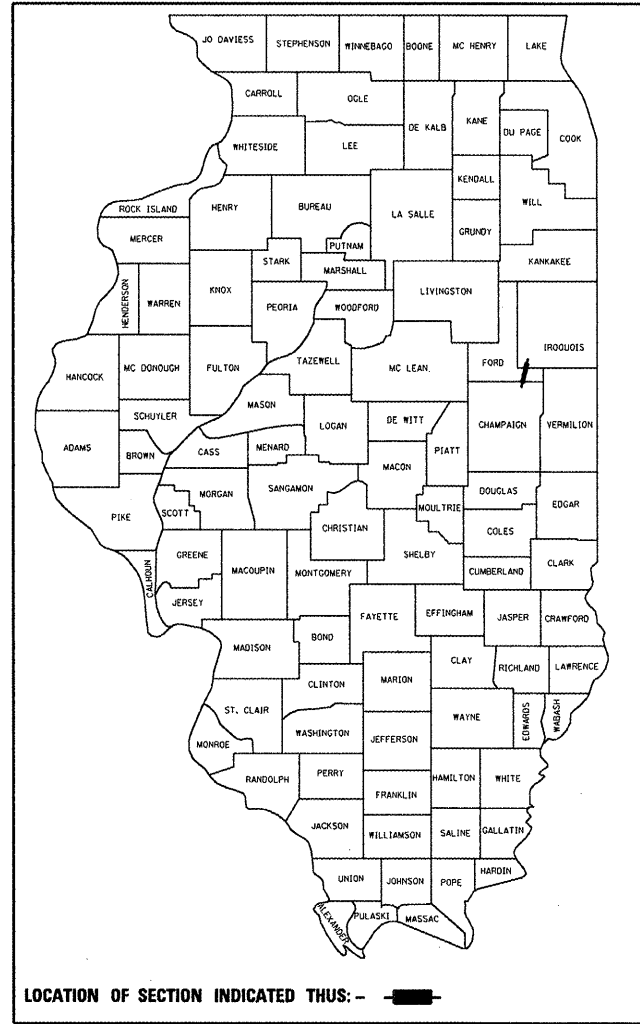


F.A.I. RTE.	SECTION	COUNTY	TOTAL SHEETS	SHEET NO.
57	**	FORD	9	1
		ILLINOIS	CONTRACT NO. 66A37	

** D3 MICRO-SURFACING 2011-1

D-93-002-10



LOCATION OF SECTION INDICATED THUS: - [rectangle] -

FUNCTIONAL CLASSIFICATION
 RURAL - INTERSTATE
 FAI 57 (I-57)
 2007 ADT 20100
 P.V. 74.1% M.U. 22.9% S.U. 3.0%

STATE OF ILLINOIS
 DEPARTMENT OF TRANSPORTATION
 DIVISION OF HIGHWAYS

SUBMITTED 4/11 2010
George F. [Signature]
 DEPUTY DIRECTOR OF HIGHWAYS, REGION ENGINEER

May 7 2010
Scott E. Stiltz, P.E.
 CHIEF ENGINEER OF DESIGN AND ENVIRONMENT

May 7 2010
Christine M. Reed
 DIRECTOR OF HIGHWAYS, CHIEF ENGINEER

**PRINTED BY THE AUTHORITY
 OF THE STATE OF ILLINOIS**

STATE OF ILLINOIS
 DEPARTMENT OF TRANSPORTATION
 DIVISION OF HIGHWAYS

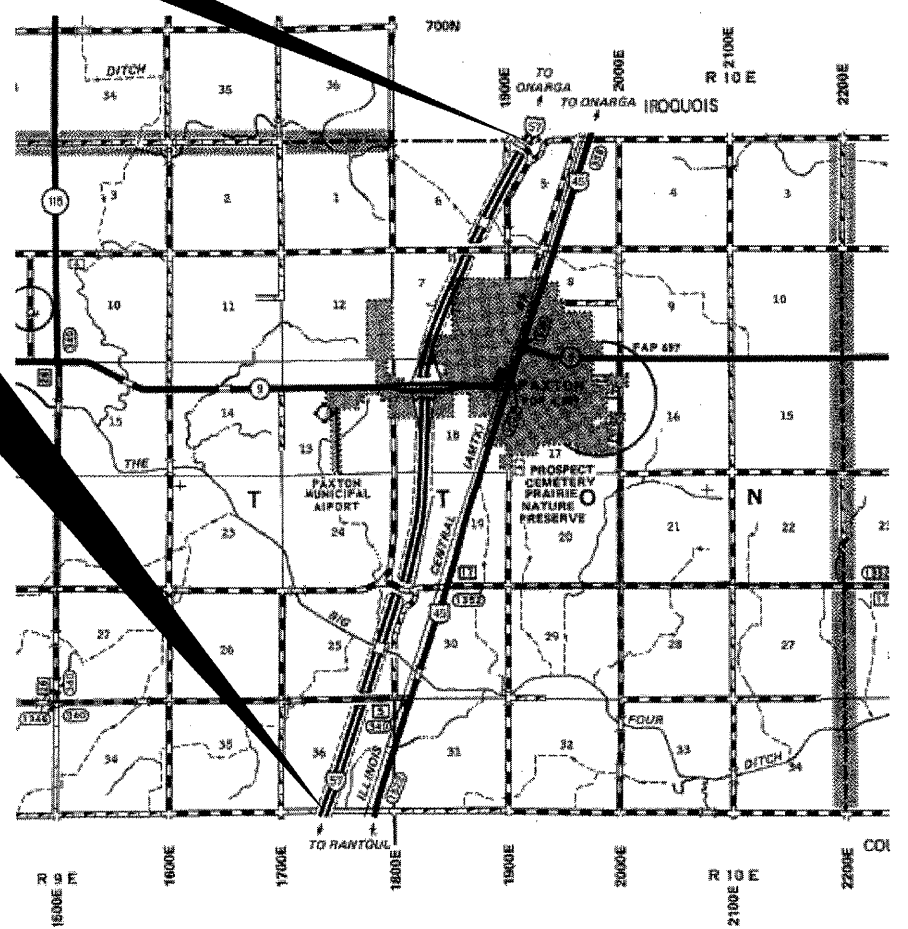
**PROPOSED
 HIGHWAY PLANS**

FAI ROUTE 57 (INTERSTATE 57)
 SECTION D3 MICRO-SURFACING 2011-1

MICRO-SURFACING JOINT REPAIR
 FORD COUNTY
 C-93-123-10

END PROJECT
 IROQUOIS COUNTY LINE
 (M.P. 263.40)

BEGIN PROJECT
 CHAMPAIGN COUNTY LINE
 (M.P. 257.14)



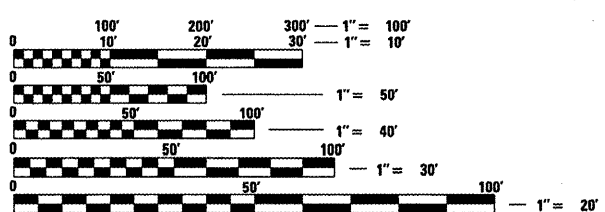
GROSS LENGTH = 33,053 FT. = 6.26 MILE

INDEX OF SHEETS

- COVER SHEET
- GENERAL NOTES
- SUMMARY OF QUANTITIES
- TYPICAL SECTION
- SCHEDULES
- TRAFFIC CONTROL AND PROTECTION, STANDARD 701400 (SPECIAL)
- TRAFFIC CONTROL AND PROTECTION, STANDARD 701401 (SPECIAL)
- CLASS A PATCHING DETAIL
- TYPICAL PAVEMENT MARKINGS

STANDARDS

- 701101-02 OFF-ROAD OPERATIONS MULTILANE, 15' (4.5 m) TO 24' (600 mm) FROM PAVEMENT EDGE
- 701106-02 OFF-ROAD OPERATIONS, MULTILANE, MORE THAN 15' (4.5 m) AWAY
- 701411-06 LANE CLOSURE, MULTILANE, AT ENTRANCE OR EXIT RAMP FOR SPEEDS ≥ 45 MPH
- 701426-03 LANE CLOSURE, MULTILANE INTERMITTENT OR MOVING OPERATION, FOR SPEEDS ≥ 45 MPH
- 701901-01 TRAFFIC CONTROL DEVICES



FULL SIZE PLANS HAVE BEEN PREPARED USING STANDARD ENGINEERING SCALES. REDUCED SIZED PLANS WILL NOT CONFORM TO STANDARD SCALES. IN MAKING MEASUREMENTS ON REDUCED PLANS, THE ABOVE SCALES MAY BE USED.

J.U.L.I.E.
 JOINT UTILITY LOCATION INFORMATION FOR EXCAVATION
 1-800-892-0123
 OR 811

PROJECT ENGINEER JOE KANNEL
 UNIT CHIEF RON WOODSHANK
 TOWNSHIPS PATTON
 CONTRACT NO. 66A37