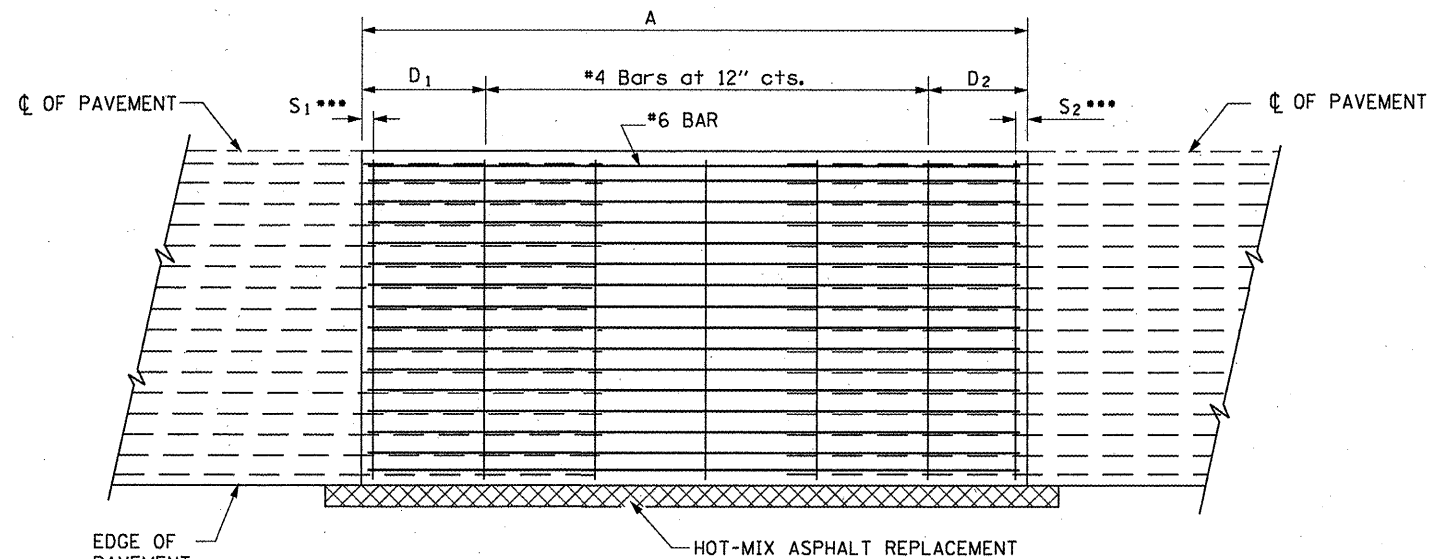
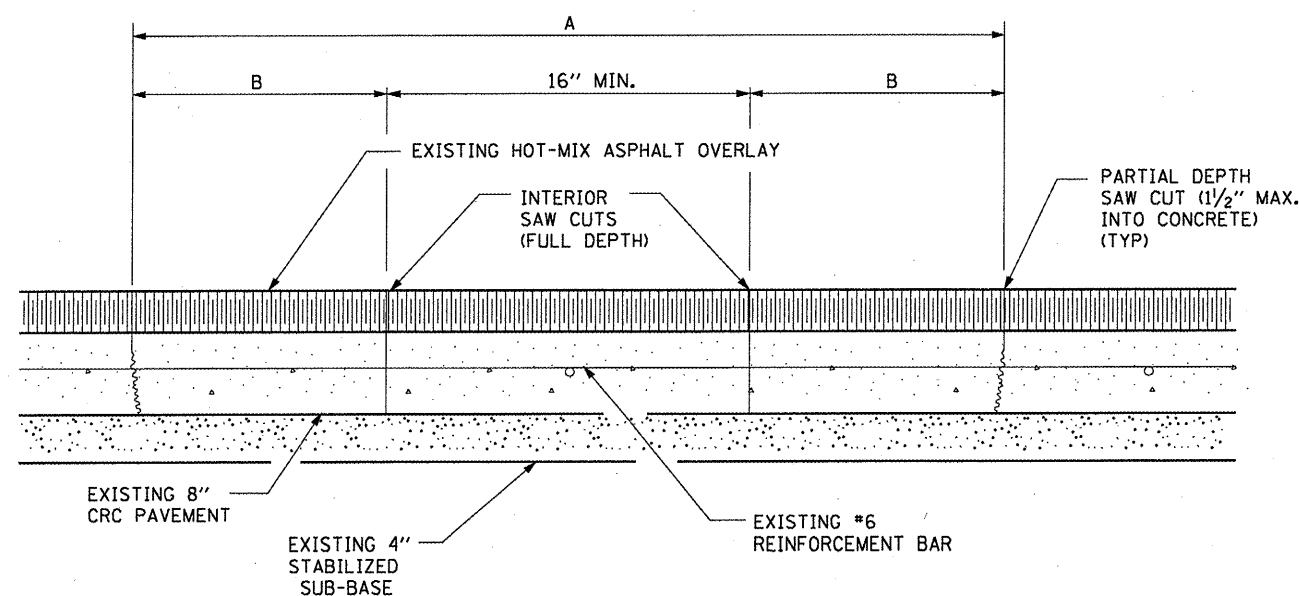


**EXISTING PAVEMENT SAWING DETAIL**  
(AGAINST BITUMINOUS SHOULDER)

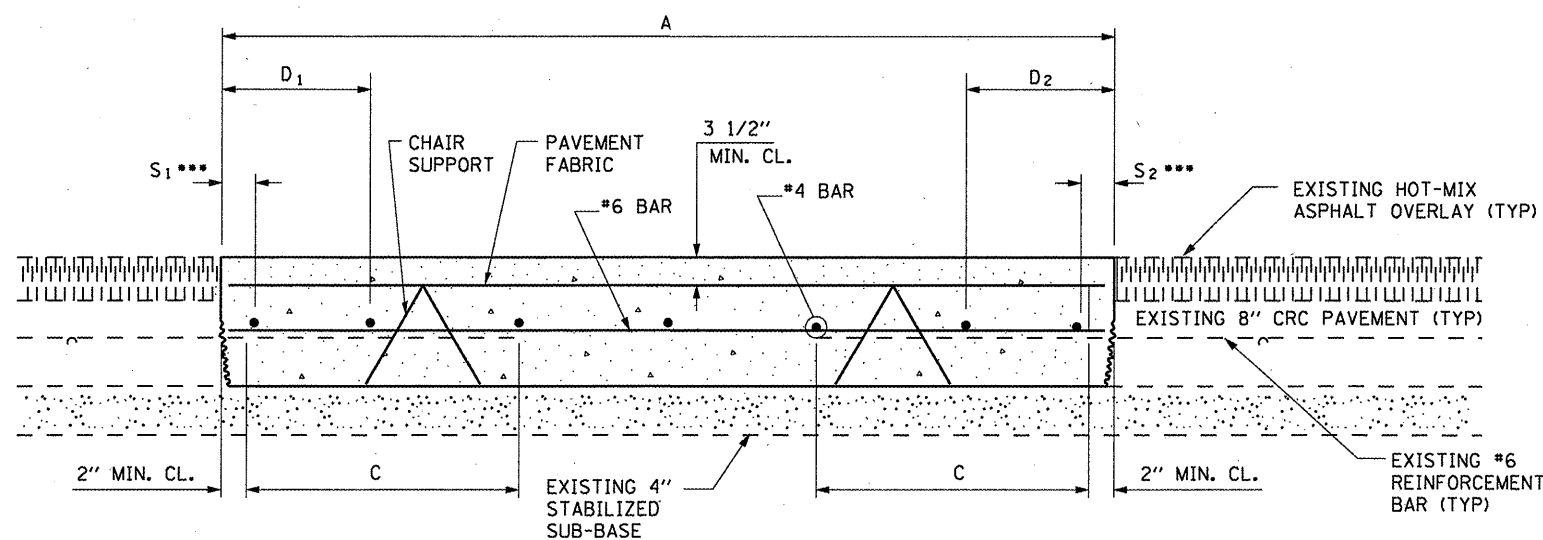


**PROPOSED PAVEMENT DETAIL**  
(AGAINST BITUMINOUS SHOULDER)

| EXISTING LONGITUDINAL REINFORCEMENT BARS | A (min.) | B (min.) | C (min.) |
|--|----------|----------|----------|
| No. 6                                    | 6'-0"    | 24"      | 19"      |



**EXISTING PAVEMENT SAW CUTTING DETAIL**



**PROPOSED CLASS A PATCHING DETAIL**

**NOTES:**

- EVERY 3<sup>rd</sup> INTERSECTION MUST BE TIED
- LAP NEW REINFORCEMENT WITH EXISTING LONGITUDINAL REINFORCEMENT
- VARIABLES: WHERE S<sub>1</sub> AND S<sub>2</sub> ARE 2 1/2" MIN. AND 12" MAX. D<sub>1</sub> = 2(S<sub>1</sub>) AND D<sub>2</sub> = 2(S<sub>2</sub>)

|  |                         |                          |           |
|--|-------------------------|--------------------------|-----------|
| FILE NAME =  | USER NAME = woodshankr1 | DESIGNED - RON WOODSHANK | REVISED - |
| ct:\pwork\pwidot\woodshankr1\d0188633\0366A37\detail.dgn |                         | DRAWN - RON WOODSHANK    | REVISED - |
| PLOT SCALE = 100.0000' / IN.                             |                         | CHECKED -                | REVISED - |
| PLOT DATE = Mar 31, 2010 - 07:24:27 AM                   |                         | DATE -                   | REVISED - |

**STATE OF ILLINOIS  
DEPARTMENT OF TRANSPORTATION**

**CLASS A PATCHING DETAIL**

SCALE: SHEET NO. 1 OF 1 SHEETS STA. TO STA.

|                               |         |        |                    |           |
|-------------------------------|---------|--------|--------------------|-----------|
| F.A.I. RTE.                   | SECTION | COUNTY | TOTAL SHEETS       | SHEET NO. |
| 57                            | **      | FORD   | 9                  | 8         |
| *** D3 MICRO-SURFACING 2011-1 |         |        | CONTRACT NO. 66A37 |           |
| ILLINOIS                      |         |        |                    |           |