

INDEX OF SHEETS

1. COVER SHEET
2. GENERAL NOTES
3. SUMMARY OF QUANTITIES
- 4 - 5. TYPICAL SECTIONS
- 6 - 8. SCHEDULES
9. TRFFIC CONTROL AND PROTECTION, STANDARD 701400 (SPECIAL) DETAILS
10. TRAFFIC CONTROL AND PROTECTION, STANDARD 701401 (SPECIAL) DETAILS
11. CLASS A PATCHING DETAILS WITHOUT HMA OVERLAY
12. CLASS B PATCHING DETAILS WITHOUT HMA OVERLAY
13. STAGE CONSTRUCTION DETAILS FOR RAMP F RECONSTRUCTION
14. RAMP F RECONSTRUCTION DETAILS
15. TYPICAL PAVEMENT MARKING

STANDARDS

- | | |
|-----------|---|
| 000001-05 | STANDARD SYMBOLS, ABBREVIATIONS AND PATTERNS |
| 001001-02 | AREAS OF REINFORCEMENT BARS |
| 001006 | DECIMAL OF AN INCH AND OF A FOOT |
| 420001-07 | PAVEMENT JOINTS |
| 420101-04 | 24' (7.2 m) JOINTED PCC PAVEMENT |
| 421001-02 | BAR REINFORCEMENT FOR CRC PAVEMENT |
| 442001-04 | CLASS A PATCHES |
| 442101-07 | CLASS B PATCHES |
| 442201-03 | CLASS C AND D PATCHES |
| 483001-04 | PCC SHOULDER |
| 606301-04 | PC CONCRETE ISLANDS AND MEDIANS |
| 701001-02 | OFF-ROAD OPERATIONS 2L, 2W, MORE THAN 15' (4.5 m) AWAY |
| 701006-03 | OFF-ROAD OPERATIONS 2L, 2W, 15' (4.5 m) TO 24" (600 mm) FROM PAVEMENT EDGE |
| 701101-02 | OFF-ROAD OPERATIONS MULTILANE, 15' (4.5 m) TO 24" (600 mm) FROM PAVEMENT EDGE |
| 701106-02 | OFF-ROAD OPERATIONS, MULTILANE, MORE THAN 15' (4.5 m) AWAY |
| 701301-03 | LANE CLOSURE, 2L, 2W, SHORT TIME OPERATIONS |
| 701411-06 | LANE CLOSURE, MULTILANE, AT ENTRANCE OR EXIT RAMP FOR SPEEDS ≥ 45 MPH |
| 701422-02 | LANE CLOSURE, MULTILANE, FOR SPEEDS ≥ 45 MPH TO 55 MPH |
| 701426-03 | LANE CLOSURE, MULTILANE INTERMITTENT OR MOVING OPERATION, FOR SPEEDS ≥ 45 MPH |
| 701901-01 | TRAFFIC CONTROL DEVICES |

STATE OF ILLINOIS
DEPARTMENT OF TRANSPORTATION
DIVISION OF HIGHWAYS
**PROPOSED
HIGHWAY PLANS**

**FAI ROUTE 55 (I-55) & FAP ROUTE 326 (IL 47)
SECTION D3 PATCHING 2011-6**

**PAVEMENT PATCHING & RECONSTRUCTION
GRUNDY COUNTY
C-93-125-10**

**PROJECT END
FAS RTE. 292 (GARDNER RD.)
(M.P. 226.82)**

**CLASS B PATCHING &
PAVEMENT RECONSTRUCTION
IL 47 (M.P. 219.82)**

**PROJECT BEGIN
LIVINGSTON COUNTY LINE
(M.P. 218.07)**



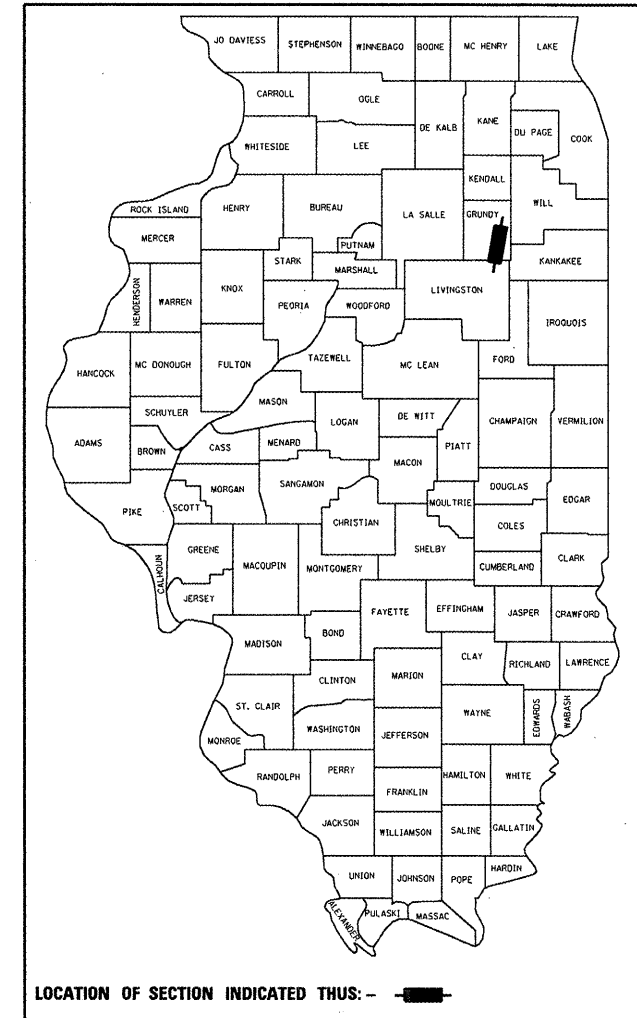
J.U.L.I.E.
JOINT UTILITY LOCATION INFORMATION FOR EXCAVATION
1-800-892-0123
OR 811

**PROJECT ENGINEER: JOE KANNEL
PROJECT MANAGER: RON WOODSHANK
TOWNSHIP: GOODFARM, GARFIELD
CONTRACT NO. 66A39**

GROSS LENGTH = 46200 FT. = 8.75 MILE

RTE.	SECTION	COUNTY	TOTAL SHEETS	SHEET NO.
**	D3 PATCHING 2011-6	GRUNDY	15	1
ILLINOIS CONTRACT NO. 66A39				
** FAI 55 (I-55) & FAP 326 (IL 47)				

D-93-002-10



LOCATION OF SECTION INDICATED THUS: - [black rectangle] -

**FUNCTIONAL CLASSIFICATION
RURAL - INTERSTATE
FAI 55 (I-55)
2007 ADT 21100
P.V 69.7% M.U27.0% S.U. 3.3%**

STATE OF ILLINOIS
DEPARTMENT OF TRANSPORTATION
DIVISION OF HIGHWAYS

SUBMITTED 411 20 10
Debra E. Ryan
DEPUTY DIRECTOR OF HIGHWAYS, REGION ENGINEER

May 7 20 10
Scott E. Stitt P.E./E
Acting ENGINEER OF DESIGN AND ENVIRONMENT

May 7 20 10
Christine M. Reed/er
DIRECTOR OF HIGHWAYS, CHIEF ENGINEER

**PRINTED BY THE AUTHORITY
OF THE STATE OF ILLINOIS**

GENERAL NOTES

PLAN DIMENSIONS AND DETAILS RELATIVE TO EXISTING ROADWAY OR STRUCTURE HAVE BEEN TAKEN FROM EXISTING PLANS AND ARE SUBJECT TO NOMINAL CONSTRUCTION VARIATIONS. IT SHALL BE THE CONTRACTOR'S RESPONSIBILITY TO VERIFY SUCH DIMENSIONS AND DETAILS IN THE FIELD AND TO MAKE NECESSARY APPROVED ADJUSTMENTS PRIOR TO CONSTRUCTION OR ORDERING OF MATERIALS. SUCH VARIATIONS SHALL NOT BE CAUSE FOR ADDITIONAL COMPENSATION FOR A CHANGE IN THE SCOPE OF THE WORK, HOWEVER, THE CONTRACTOR WILL BE PAID FOR THE QUANTITY ACTUALLY FURNISHED AT THE UNIT BID FOR THE WORK.

FOR STABILIZATION, ALL TYPE III BARRICADES SHALL REQUIRE A MINIMUM OF FOUR SAND BAGS PER BARRICADE.

THE CONTRACTOR SHALL BE RESPONSIBLE FOR PROTECTING UTILITY PROPERTY FROM CONSTRUCTION OPERATIONS AS OUTLINED IN ARTICLE 107.31 OF THE STANDARD SPECIFICATIONS. THE "JULIE" NUMBER IS 1-800-892-0123. A MINIMUM OF FORTY-EIGHT (48) HOURS ADVANCE NOTICE IS REQUIRED.

ABANDONED UNDERGROUND UTILITIES THAT CONFLICT WITH CONSTRUCTION SHALL BE DISPOSED OF OUTSIDE THE LIMITS OF THE RIGHT OF WAY ACCORDING TO ARTICLE 202.03 OF THE STANDARD SPECIFICATIONS AND AS DIRECTED BY THE ENGINEER. THIS WORK WILL NOT BE PAID FOR SEPARATELY BUT SHALL BE INCLUDED IN THE COST OF CLASS A PATCHING.

ANY REFERENCE TO A STANDARD IN THESE PLANS SHALL BE INTERPRETED TO MEAN THE EDITION AS INDICATED BY THE SUBNUMBER LISTED ON THE INDEX OF SHEETS OR THE COPY OF THE STANDARD INCLUDED IN THESE PLANS.

EXISTING REINFORCEMENT BARS EXTENDING INTO REMOVAL AREA SHALL BE CLEANED, STRAIGHTENED AND INCORPORATED INTO THE NEW CONSTRUCTION. ANY REINFORCEMENT BARS THAT ARE DAMAGED DURING CONCRETE REMOVAL SHALL BE REPLACED WITH AN APPROVED BAR SPLICER OR ANCHORAGE SYSTEM. COST INCLUDED WITH CONCRETE REMOVAL.

DATE: 4/1/10

PREPARED BY: Tom Borik
ACT 11/10 DISTRICT STUDIES & PLANS ENGINEER

EXAMINED BY: Herbert K. Jung
DISTRICT CONSTRUCTION ENGINEER

Wayne L. Phillips
DISTRICT MATERIALS ENGINEER

Bruce A. Anderson
DISTRICT OPERATIONS ENGINEER

FILE NAME =	USER NAME = woodshankr1	DESIGNED - RON WOODSHANK	REVISED -	STATE OF ILLINOIS DEPARTMENT OF TRANSPORTATION	GENERAL NOTES	RTE.	SECTION	COUNTY	TOTAL SHEETS	SHEET NO.	
ct:\pwwork\pwwid\DOT\WOODSHANKRL\d0188632	D366A39-detail.dgn	DRAWN - RON WOODSHANK	REVISED -			**	D3 PATCHING 2011-6	GRUNDY	15	2	
	PLOT SCALE = 1/8" = 1'-0"	CHECKED -	REVISED -			**	FAI 55 & FAP 326				CONTRACT NO. 66A39
	PLOT DATE = Mar 31, 2010 - 08:15:48 AM	DATE -	REVISED -					ILLINOIS			
				SCALE: _____	SHEET NO. 1 OF 1 SHEETS	STA. _____	TO STA. _____				

SUMMARY OF QUANTITIES

CODE NO.	ITEM	UNIT	TOTAL QUANTITY	RURAL 100% STATE	
				FAI RTE. 55 J000	IL RTE. 47 J000
20200500	EARTH EXCAVATION (WIDENING)	CU YD	14		14
35101600	AGGREGATE BASE COURSE, TYPE B 4"	SQ YD	257		257
40200700	AGGREGATE SURFACE COURSE, TYPE A, 8"	SQ YD	422		422
42000401	PORTLAND CEMENT CONCRETE PAVEMENT 9" (JOINTED)	SQ YD	360		360
44000100	PAVEMENT REMOVAL	SQ YD	360		360
44003100	MEDIAN REMOVAL	SQ FT	335		335
44004250	PAVED SHOULDER REMOVAL	SQ YD	200		200
44200541	CLASS A PATCHES, TYPE II, 9 INCH	SQ YD	219	219	
44200547	CLASS A PATCHES, TYPE IV, 9 INCH	SQ YD	28	28	
44201019	CLASS B PATCHES, TYPE II, 14 INCH	SQ YD	470		470
44213000	PATCHING REINFORCEMENT	SQ YD	247	247	
44213200	SAW CUTS	FOOT	5058	1570	3488
48300400	PORTLAND CEMENT CONCRETE SHOULDERS 9"	SQ YD	257		257
60619600	CONCRETE MEDIAN TYPE SB6.12	SQ FT	335		335
67100100	MOBILIZATION	L SUM	1	0.75	0.25
70100320	TRAFFIC CONTROL AND PROTECTION, STANDARD 701422	L SUM	1		1
70100420	TRAFFIC CONTROL AND PROTECTION, STANDARD 701411	EACH	8	8	
70103815	TRAFFIC CONTROL SURVEILLANCE	CAL DA	25	25	
* 78005110	EPOXY PAVEMENT MARKING - LINE 4"	FOOT	970	370	600
* 78005130	EPOXY PAVEMENT MARKING - LINE 6"	FOOT	169	57	112
* 78005140	EPOXY PAVEMENT MARKING - LINE 8"	FOOT	12	12	
X7010805	TRAFFIC CONTROL AND PROTECTION, STANDARD 701401 (SPECIAL)	L SUM	1	1	
Z0017202	DOWEL BARS 1 1/2"	EACH	1168		1168
Z0075310	TIE BARS 3/4"	EACH	10	10	

* SPECIALITY ITEM

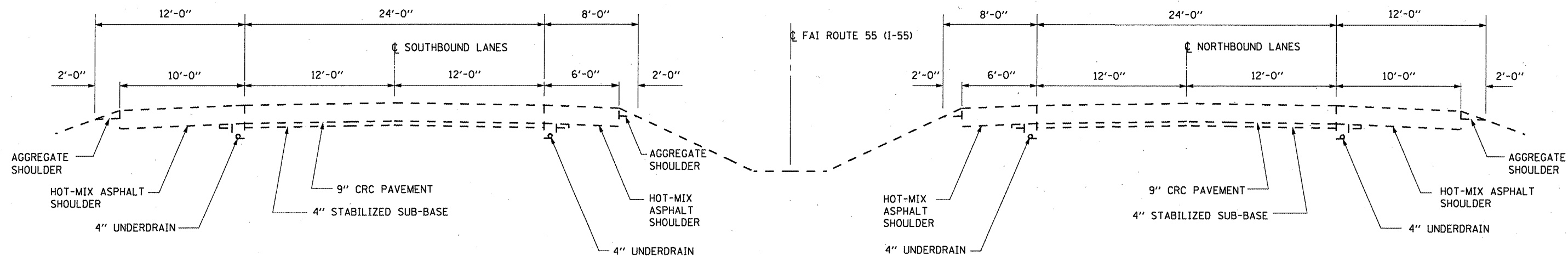
FILE NAME =	USER NAME = woodshankr1	DESIGNED - RON WOODSHANK	REVISED -
c:\pwork\PIWIDOT\WOODSHANKRL\0188632	0366A39-details.dgn	DRAWN - RON WOODSHANK	REVISED -
PLOT SCALE = 50.0000' / IN.	CHECKED -	REVISOR -	REVISED -
PLOT DATE = Apr 09, 2010 - 06:21:59 AM	DATE -	REVISOR -	REVISED -

STATE OF ILLINOIS
DEPARTMENT OF TRANSPORTATION

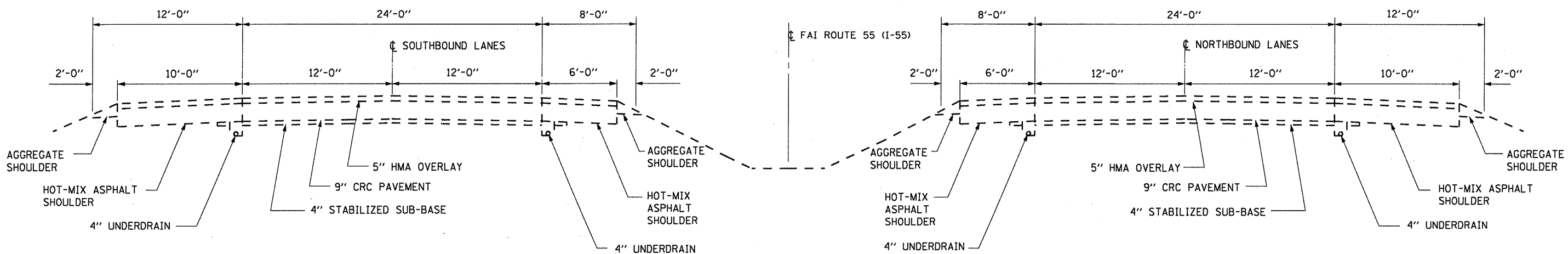
SUMMARY OF QUANTITIES

SCALE: SHEET NO. 1 OF 1 SHEETS STA. TO STA.

RTE.	SECTION	COUNTY	TOTAL SHEETS	SHEET NO.
**	03 PATCHING 2011-6	GRUNDY	13	3
** FAI 55 & FAP 326		CONTRACT NO. 66A39		
ILLINOIS				

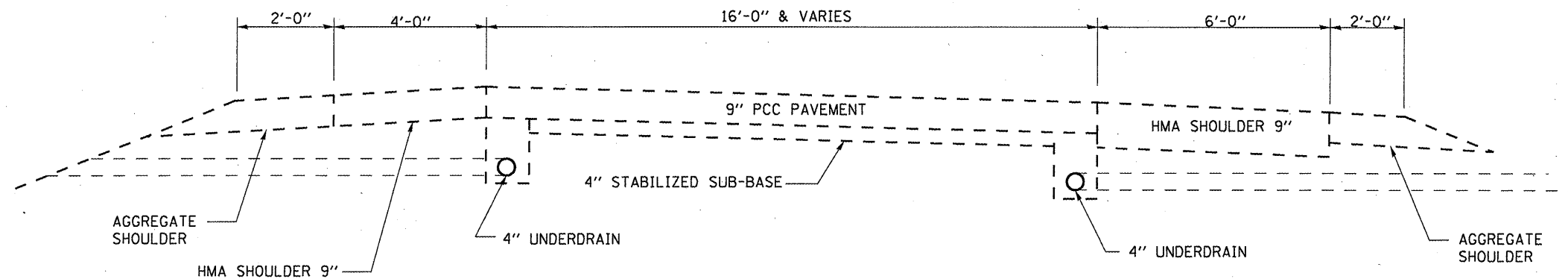


**TYPICAL SECTION
MAINLINE**
M.M. 218.07 TO M.M. 221.10

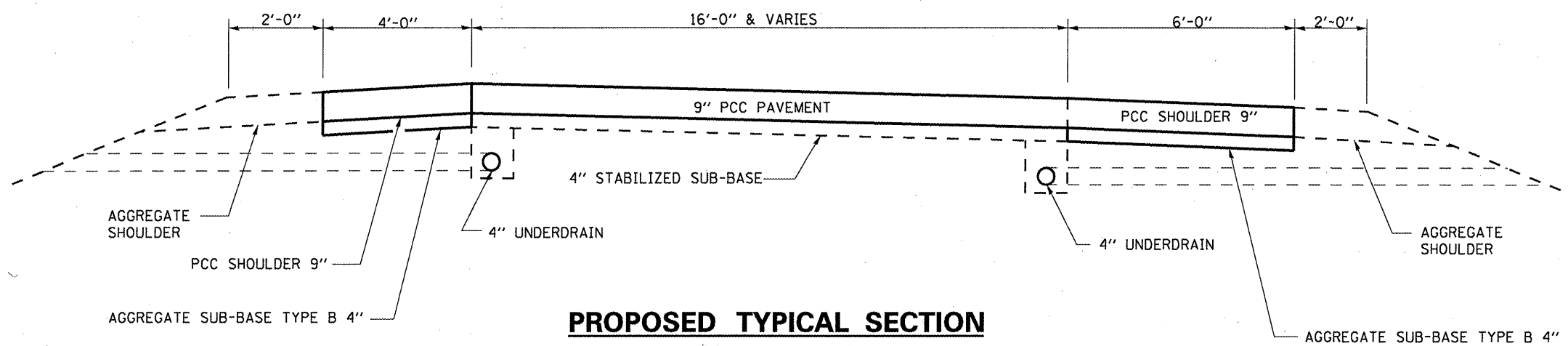


**TYPICAL SECTION
MAINLINE**
M.M. 221.10 TO M.M. 226.82

FILE NAME =	USER NAME = woodshankr1	DESIGNED - RON WOODSHANK	REVISED -	STATE OF ILLINOIS DEPARTMENT OF TRANSPORTATION	TYPICAL SECTION - FAI 55	RTE.	SECTION	COUNTY	TOTAL SHEETS	SHEET NO.
cd:\pw\work\FW100T\WOODSHANKR1\d0188632	D366A39-details.dgn	DRAWN - RON WOODSHANK	REVISED -			**	D3 PATCHING 2011-6	GRUNDY	15	4
	PLOT SCALE = 100.0000' / IN.	CHECKED -	REVISED -			**	FAI 55 & FAP 326			CONTRACT NO. 66A39
	PLOT DATE = Mar 31, 2010 - 06:15:58 AM	DATE -	REVISED -							[ILLINOIS]
				SCALE:	SHEET NO. 1 OF 1 SHEETS	STA.	TO STA.			



**EXISTING TYPICAL SECTION
(S.E. RAMP)**



**PROPOSED TYPICAL SECTION
(S.E. RAMP)**

FILE NAME =	USER NAME = woodshankr1	DESIGNED - RON WOODSHANK	REVISED -
c:\pwork\PWIDOT\WOODSHANKRL\d0188632	0366A39-details.dgn	DRAWN - RON WOODSHANK	REVISED -
PLOT SCALE = 100.0000' / IN.	CHECKED -	DATE -	REVISED -
PLOT DATE = Mar 31, 2010 - 08:15:03 AM			

STATE OF ILLINOIS
DEPARTMENT OF TRANSPORTATION

TYPICAL SECTIONS - RAMP F

SCALE: SHEET NO. 1 OF 1 SHEETS STA. TO STA.

RTE.	SECTION	COUNTY	TOTAL SHEETS	SHEET NO.
**	D3 PATCHING 2011-6	GRUNDY	15	5
** FAI 55 & FAP 326			CONTRACT NO. 66A39	
[ILLINOIS]				

PATCHING SCHEDULE - FAI 55											
LOCATION	PASSING LANE					DRIVING LANE					REMARKS
	CLASS A		PATCH REINF.	SAW CUTS	TIE BARS	CLASS A		PATCH REINF.	SAW CUTS	TIE BARS	
	TYPE II 9"	TYPE IV 9"				TYPE II 9"	TYPE IV 9"				
M.P.	SQ YD	SQ YD	SQ YD	FOOT	EACH	SQ YD	SQ YD	SQ YD	FOOT	EACH	
218.07											LIVINGSTON COUNTY LINE
218.40						8		8	60		
218.50						8		8	60		
218.80						11		11	64		
218.90						11		11	64		
218.91						11		11	64		
218.92						11		11	64		
219.10						8		8	60		
219.11						8		8	60		
219.40						8		8	60		
219.45						8		8	60		
219.70						8		8	60		
219.82											IL RTE. 47
220.30							28	28	90	10	
220.40						8		8	60		
220.50						8		8	60		
220.60						8		8	60		
220.65						13		13	68		
226.82											FAS RTE. 292 (GARDNER RD.)
233.30											WILL COUNTY LINE
NBL TOTALS						136	28	164	1014	10	

PATCHING SCHEDULE - FAI 55											
LOCATION	PASSING LANE					DRIVING LANE					REMARKS
	CLASS A		PATCH REINF.	SAW CUTS	TIE BARS	CLASS A		PATCH REINF.	SAW CUTS	TIE BARS	
	TYPE II 9"	TYPE IV 9"				TYPE II 9"	TYPE IV 9"				
M.P.	SQ YD	SQ YD	SQ YD	FOOT	EACH	SQ YD	SQ YD	SQ YD	FOOT	EACH	
233.49											WILL COUNTY LINE
226.82											FAS 292 (GARDNER RD.)
219.90						8		8	60		
219.85						8		8	60		
219.82											IL RTE. 47
219.80						8		8	60		
219.30						13		13	68		
219.31						13		13	68		
219.10						8		8	60		
218.60						8		8	60		
218.30						8		8	60		
218.25						8		8	60		
218.07											LIVINGSTON COUNTY LINE
SBL TOTALS						83		83	556		

PATCHING SCHEDULE - IL 47							
LOCATION NBL	PASSING LANE			DRIVING LANE			REMARKS
	CLASS B TYPE II 14"	DOWEL BARS 1 1/2"	SAW CUTS	CLASS B TYPE II 14"	DOWEL BARS 1 1/2"	SAW CUTS	
	SQ YD	EACH	FOOT	SQ YD	EACH	FOOT	
0.00							BEGIN CONCRETE SECTION
0.01	8	20	60				
0.02	8	20	60	8	20	60	
0.03				8	20	60	
0.04				8	20	60	
0.06				8	20	60	
0.07				8	20	60	
0.10				8	20	60	
0.14	8	20	60	8	20	60	
0.18	8	20	60	8	20	60	
0.20				8	20	60	
0.21				8	20	60	
0.22				8	20	60	
0.35	8	20	60	8	20	60	
0.38	8	20	60				
0.38	8	20	60				TURN LANE
0.40	8	20	60				
0.42				8	20	60	
0.43	8	20	60				
0.45	8	20	60	8	8	60	
0.46	8	20	60				
0.47		20					
0.51							END CONCRETE SECTION
NBL TOTALS	88	240	660	112	268	840	

PATCHING SCHEDULE - IL 47							
LOCATION SBL	PASSING LANE			DRIVING LANE			REMARKS
	CLASS B TYPE II 14"	DOWEL BARS 1 1/2"	SAW CUTS	CLASS B TYPE II 14"	DOWEL BARS 1 1/2"	SAW CUTS	
	SQ YD	EACH	FOOT	SQ YD	EACH	FOOT	
0.00							BEGIN CONCRETE SECTION
0.01	8	20	60	8	20	60	
0.04	8	20	60	8	20	60	
0.07	8	20	60	8	20	60	
0.08				11	20	64	
0.10	8	20	60				
0.11				8	20	60	
0.12	8	20	60				
0.15				8	20	60	
0.16	8	20	60	8	20	60	
0.17				8	20	60	
0.18				8	20	60	
0.19				8	20	60	
0.19				8	20	60	
0.25	8	20	60				
0.26	8	20	60	8	20	60	
0.29	8	20	60				
0.30	8	20	60	8	20	60	
0.33	8	20	60	8	20	60	
0.33	8	20	60				TURN LANE
0.37	8	20	60				
0.40				8	20	60	
0.43	11	20	64	8	20	60	
0.47	8	20	60				
0.50	8	20	60	8	20	60	
0.51							END CONCRETE SECTION
SBL TOTALS	131	320	964	139	340	1024	

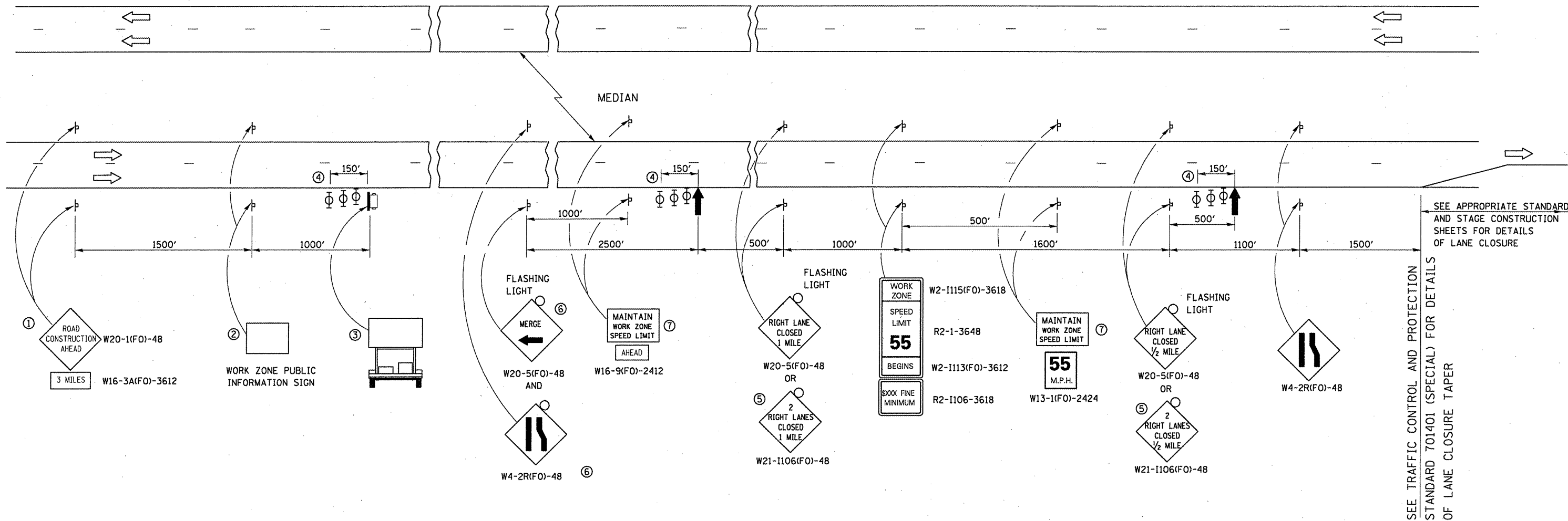
RAMP F RECONSTRUCTION SCHEDULE									
LOCATION	EARTH EXCAVATION WIDENING	PAVEMENT REMOVAL	PAVED SHOULDER REMOVAL	STABILIZED SUB-BASE 4"	PORTLAND CEMENT CONCRETE PAVEMENT 9" (JOINTED)	PORTLAND CEMENT CONCRETE SHOULDER 9"	AGGREGATE SURFACE COURSE TYPE A 8"	MEDIAN REMOVAL	CONCRETE MEDIAN TYPE SB6.12
	CU YD	SQ YD	SQ YD	SQ YD	SQ YD	SQ YD	SQ YD	SQ FT	SQ FT
RAMP F	14	360	200	257	360	257	460	335	335

PAVEMENT MARKING SCHEDULE - FAI 55				
LOCATION NBL	EPOXY PAVEMENT MARKING, LINE 4"		EPOXY PAVEMENT MARKING, LINE 6"	REMARKS
	FEET		FEET	
	YELLOW	WHITE	WHITE	
LOG MILE				
218.07				LIVINGSTON COUNTY LINE
218.40	6	6	2	
218.50	6	6	2	
218.80	8	8	2	
218.90	8	8	2	
218.91	8	8	2	
218.92	8	8	2	
219.10	6	6	2	
219.11	6	6	2	
219.40	6	6	2	
219.45	6	6	2	
219.70	6	6	2	
219.82				IL RTE. 47
220.30	21	21	6	
220.40	6	6	2	
220.50	6	6	2	
220.60	6	6	2	
220.65	10	10	3	
226.82				FAS RTE. 292 (GARDNER RD.)
SUBTOTALS	123	123	37	
TOTAL	246		37	

PAVEMENT MARKING SCHEDULE - IL 47					
LOCATION NBL	EPOXY PAVEMENT MARKING, LINE 4"		EPOXY PAVEMENT MARKING, LINE 6"	EPOXY PAVEMENT MARKING, LINE 8"	REMARKS
	FEET		FEET	FEET	
	YELLOW	WHITE	WHITE	WHITE	
LOG MILE					
0.00					BEGIN CONCRETE SECTION
0.01	6		2		
0.02	6	6	2		
0.03		6	2		
0.04		6	2		
0.06		6	2		
0.07		6	2		
0.10		6	2		
0.14	6	6	2		
0.18	6	6	2		
0.20		6	2		
0.21		6	2		
0.22		6	2		
0.35	6	6	2		
0.38	6			6	TURN LANE
0.40	6		2		
0.42		6	2		
0.43	6		2		
0.45	6	6	2		
0.46	6	6	2		
0.47		6	2		
0.51					END CONCRETE SECTION
S.E. RAMP	110	180	28		
SUBTOTALS	170	276	66	6	
TOTAL	446		66	6	

PAVEMENT MARKING SCHEDULE - FAI 55				
LOCATION SBL	EPOXY PAVEMENT MARKING, LINE 4"		EPOXY PAVEMENT MARKING, LINE 6"	REMARKS
	FEET		FEET	
	YELLOW	WHITE	WHITE	
LOG MILE				
226.82				FAS 292 (GARDNER RD.)
219.90	6	6	2	
219.85	6	6	2	
219.82				IL RTE. 47
219.80	6	6	2	
219.30	10	10	3	
219.31	10	10	3	
219.10	6	6	2	
218.60	6	6	2	
218.30	6	6	2	
218.25	6	6	2	
218.07				LIVINGSTON COUNTY LINE
SUBTOTALS	62	62	20	
TOTAL	124		20	

PAVEMENT MARKING SCHEDULE - IL 47					
LOCATION SBL	EPOXY PAVEMENT MARKING, LINE 4"		EPOXY PAVEMENT MARKING, LINE 6"	EPOXY PAVEMENT MARKING, LINE 8"	REMARKS
	FEET		FEET	FEET	
	YELLOW	WHITE	WHITE	WHITE	
LOG MILE					
0.00					BEGIN CONCRETE SECTION
0.01	6	6	2		
0.04	6	6	2		
0.07	6	6	2		
0.08		8	2		
0.10	6		2		
0.11		6	2		
0.12	6		2		
0.15		6	2		
0.16	6	6	2		
0.17		6	2		
0.18		6	2		
0.19		6	2		
0.19		6	2		
0.25	6		2		
0.26	6	6	2		
0.29	6		2		
0.30	6	6	2		
0.33	6	6	2	6	TURN LANE
0.37	6		2		
0.40		6	2		
0.43	8	6	2		
0.47	6		2		
0.50	6	6	2		
0.51					END CONCRETE SECTION
SUBTOTALS	92	62	46	6	
TOTAL	154		46	6	



- ① THE ROAD CONSTRUCTION AHEAD SIGN SHALL BE LOCATED 3 MILES IN ADVANCE OF THE PROJECT LIMITS.
- ② THE MESSAGE AND SIZE OF THE WORK ZONE PUBLIC INFORMATION SIGN SHALL BE AS SPECIFIED BY THE DEPARTMENT.
- ③ TO BE PLACED IN THE MEDIAN WHEN FEASIBLE. THE MESSAGE BOARD SHALL BE USED TO DISPLAY STATUS OF LANES WITHIN THE PROJECT. THE PRIMARY MESSAGES SHALL BE:
"RIGHT LANE CLOSED" / " x MILES AHEAD"
"LEFT LANE CLOSED" / " x MILES AHEAD"
"ALL LANES OPEN"
- ④ THREE, TYPE II BARRICADES, DRUMS, OR VERTICAL BARRICADES AT 50' CENTERS.
- ⑤ THIS SIGN SHALL BE USED WHEN 2 LANES ARE CLOSED.
- ⑥ WHEN THE LEFT LANE IS CLOSED, SWITCH THESE TWO SIGNS AND THE DIRECTION OF THE MERGE ARROW.

⑦ 48"x36" FLUORESCENT ORANGE SIGN WITH BLACK LETTERS.
48"

36" MAINTAIN WORK ZONE SPEED LIMIT 8" 6" 6"

- ↑ ARROW BOARD
- ▭ PORTABLE CHANGEABLE MESSAGE SIGN
- ⊥ SIGN
- ⊕ TYPE II BARRICADE, DRUM, OR VERTICAL BARRICADE WITH MONODIRECTIONAL FLASHING LIGHT
- ↘ LANE DROP ARROW - SEE STANDARD 780001
- ▨ TEMPORARY THERMOPLASTIC RUMBLE STRIPS

GENERAL NOTE:

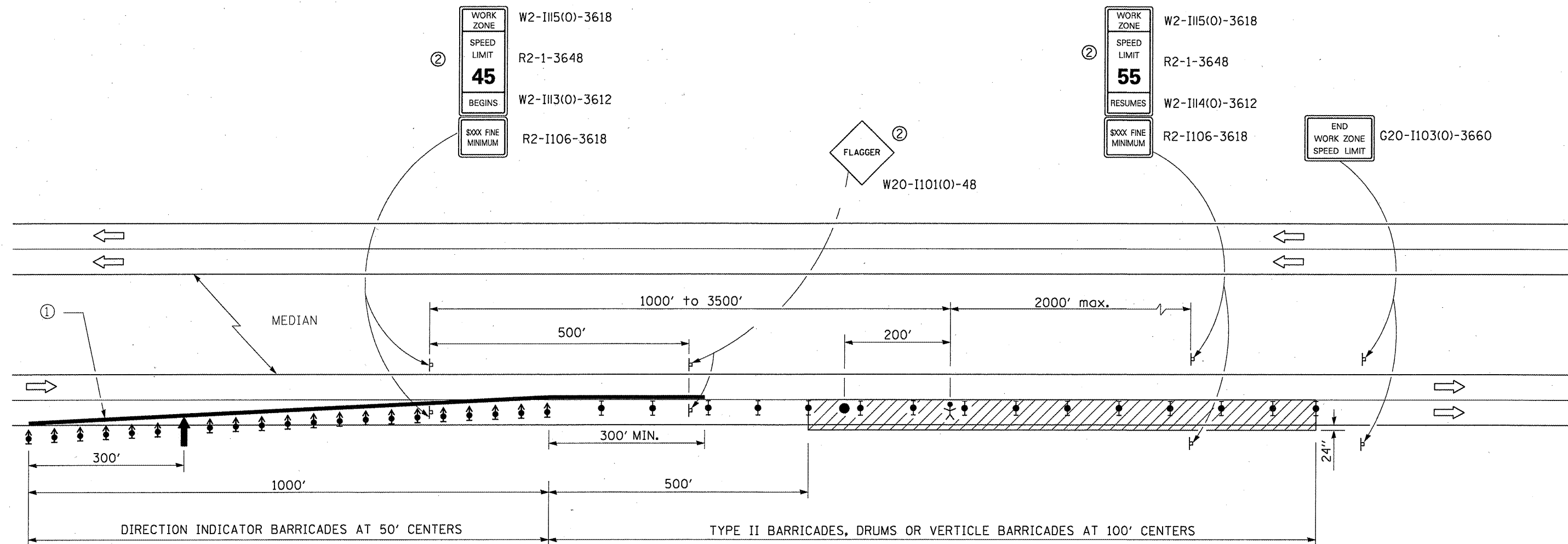
THIS STANDARD IS USED WHERE AT ANY TIME A LANE IS CLOSED ON A FREEWAY/EXPRESSWAY.

WHEN THE LEFT LANE IS CLOSED, LEFT LANE CLOSED SIGNS SHALL BE SUBSTITUTED FOR THE RIGHT LANE CLOSED SIGNS.

THE FIRST TWO SIGNS AND THE MESSAGE BOARD ARE STATIONARY. THE OTHER SIGNS AND ARROWBOARDS SHALL BE MOVED AS NECESSARY TO MAINTAIN THE REQUIRED DISTANCE FROM THE START OF THE LANE CLOSURE TAPERIS).


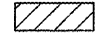

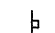



WHEN WORK OPERATIONS ARE NEAR MAJOR INTERCHANGES THE CONTRACTOR SHALL FURNISH ADDITIONAL MESSAGE BOARDS AND UTILIZED AT THE DIRECTION OF THE ENGINEER.

FILE NAME =	USER NAME = woodshankr1	DESIGNED - RON WOODSHANK	REVISED -	STATE OF ILLINOIS DEPARTMENT OF TRANSPORTATION	TRAFFIC CONTROL AND PROTECTION STANDARD 701400 (SPECIAL) DETAILS	RTE.	SECTION	COUNTY	TOTAL SHEETS	SHEET NO.
et\pw_work\PWIDOT\WOODSHANKR1\0188632	D366A39-details.dgn	DRAWN - RON WOODSHANK	REVISED -			**	D3 PATCHING 2011-6	GRUNDY	15	9
PLOT SCALE = 100.0000' / IN.	CHECKED -	REVISED -	REVISED -			**	FAI 55 & FAP 326			
PLOT DATE = Mar 31, 2010 - 08:16:30 AM	DATE -	REVISED -	REVISED -			CONTRACT NO. 66A39				
					SCALE:	SHEET NO. 1 OF 1 SHEETS	STA.	TO STA.		



SEE TRAFFIC CONTROL AND PROTECTION STANDARD 701400 (SPECIAL) FOR APPROACH TO LANE CLOSURE DETAILS

SYMBOLS

-  ARROW BOARD
-  WORK AREA
-  WORKER
-  SIGN
-  DIRECTION INDICATOR BARRICADE WITH STEADY BURN MONODIRECTIONAL LIGHT
-  TYPE II BARRICADES, DRUM OR VERTICAL BARRICADE WITH STEADY BURN MONODIRECTIONAL LIGHT
-  Flagger with traffic control sign

- ① REFLECTORIZED TEMPORARY PAVEMENT MARKING TAPE SHALL BE PLACED THROUGHOUT THE TAPER AND FOR 300' ALONGSIDE THE WORK AREA WHEN THE CLOSURE TIME IS GREATER THAN FOURTEEN DAYS. THE EDGE LINE SHALL BE WHITE FOR RIGHT LANE CLOSURES AND YELLOW FOR LEFT LANE CLOSURES. TEMPORARY RAISED REFLECTORIZED PAVEMENT MARKERS AT 25' CENTERS SHALL BE USED TO SUPPLEMENT THE PAVEMENT MARKING TAPE.
- ② WORK ZONE SPEED LIMITS SIGNS AND FLAGGER SIGNS SHALL BE MOVED AS NECESSARY TO MAINTAIN THE REQUIRED SPACING BETWEEN THE SIGNS AND THE WORKERS IN EACH SEPARATE WORK ACTIVITY.

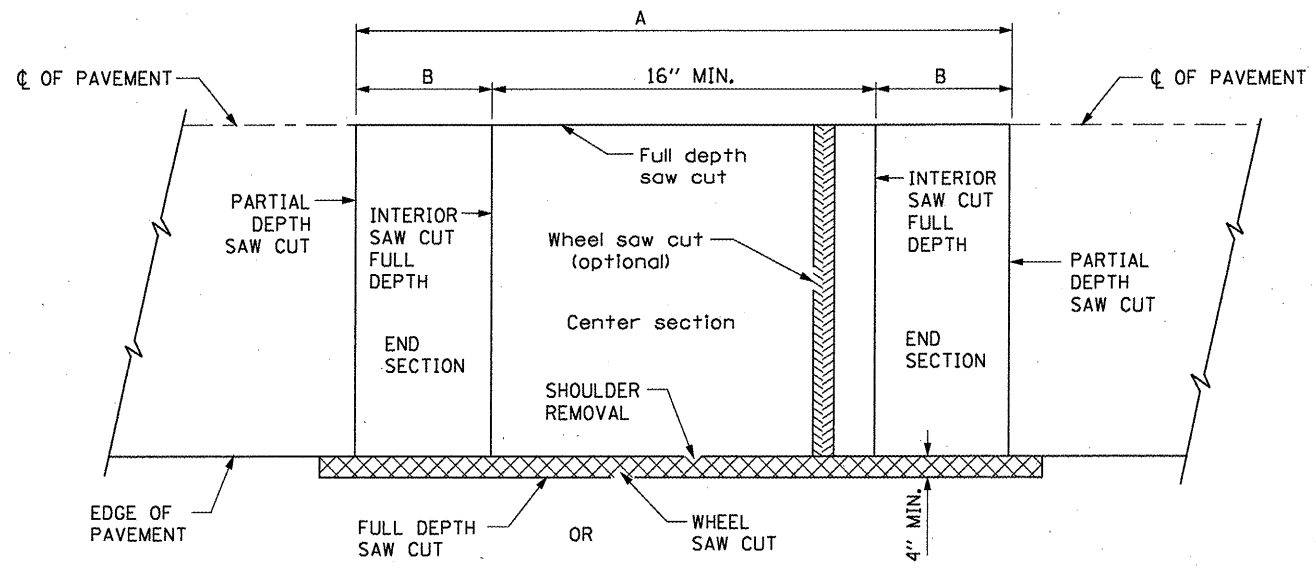
GENERAL NOTES

THIS STANDARD IS USED WHERE AT ANY TIME ANY VEHICLE, EQUIPMENT, WORKERS OR THEIR ACTIVITIES WILL ENCR OACH ON THE LANE ADJACENT TO THE SHOULDER OR ON THE SHOULDER WITHIN 24" OF THE EDGE OF PAVEMENT.

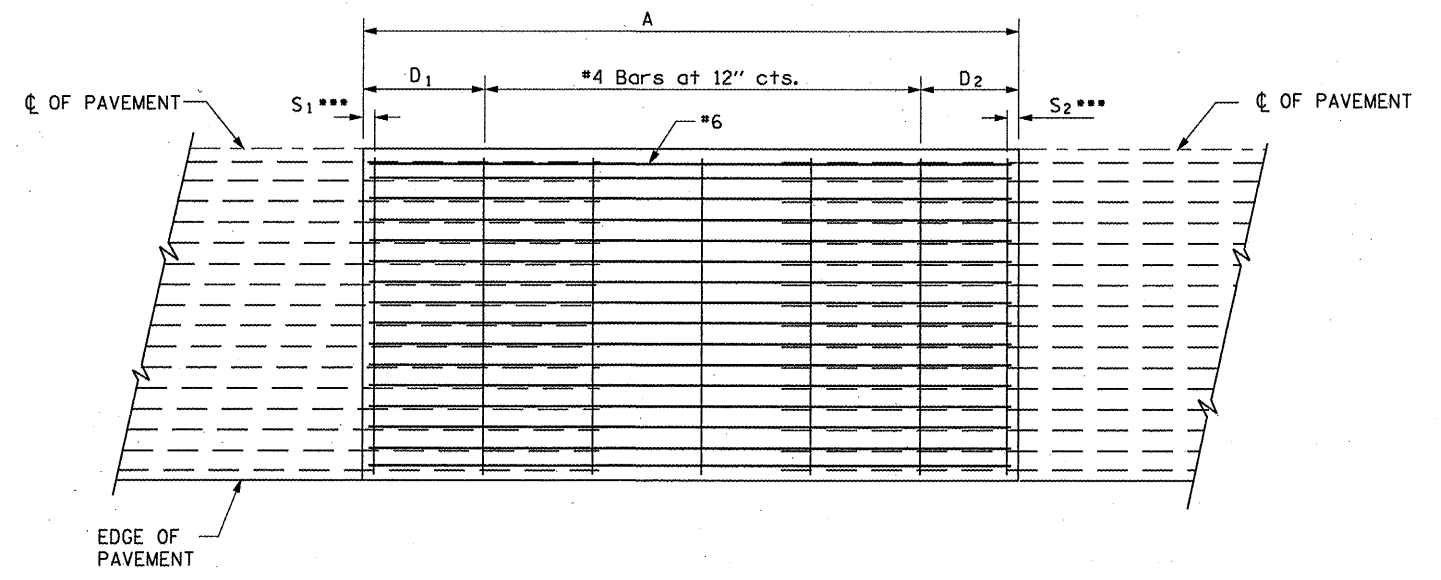
THIS STANDARD MUST ALWAYS BE USED IN COMBINATION WITH TRAFFIC CONTROL AND PROTECTION DETAIL 701400 (SPECIAL).

THIS STANDARD ALSO APPLIES WHEN WORK IS BEING PERFORMED IN THE LEFT LANE. UNDER THESE CONDITIONS, THE SET UP WOULD BE A MIRROR IMAGE TO WHAT IS SHOWN.

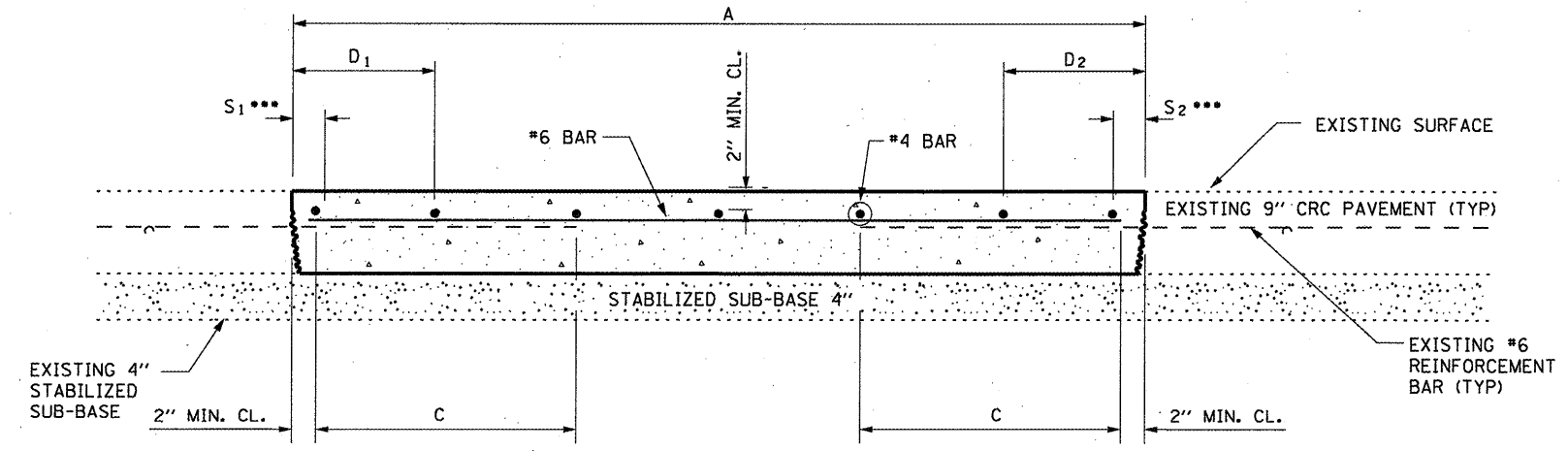
A CHECK BARRICADE SHALL BE PLACED IN THE MIDDLE OF THE CLOSED LANE AND AT THE SHOULDER AT 1000' CENTER.



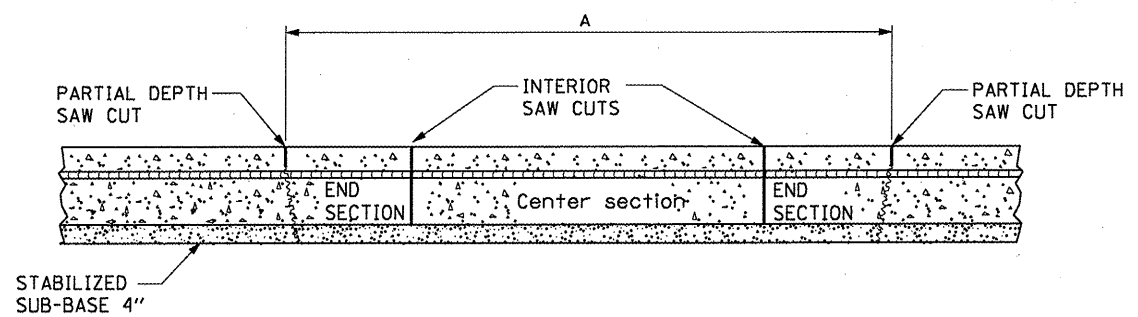
EXISTING PAVEMENT SAWING DETAIL
(AGAINST BITUMINOUS SHOULDER)



PROPOSED PAVEMENT DETAIL
(AGAINST CONCRETE SHOULDER)



PROPOSED CLASS A PATCHING DETAIL

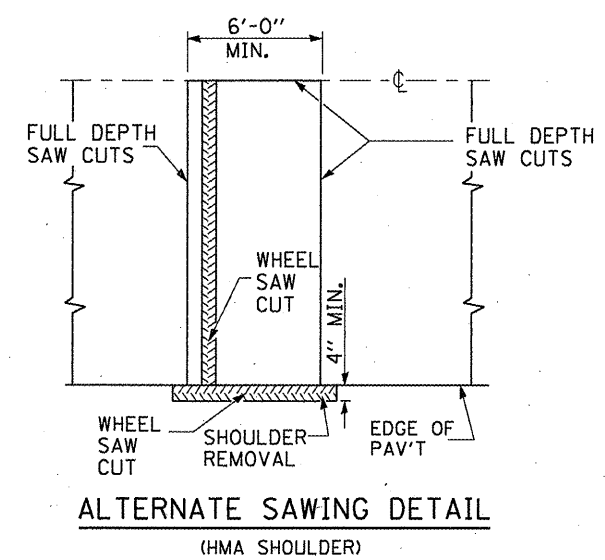
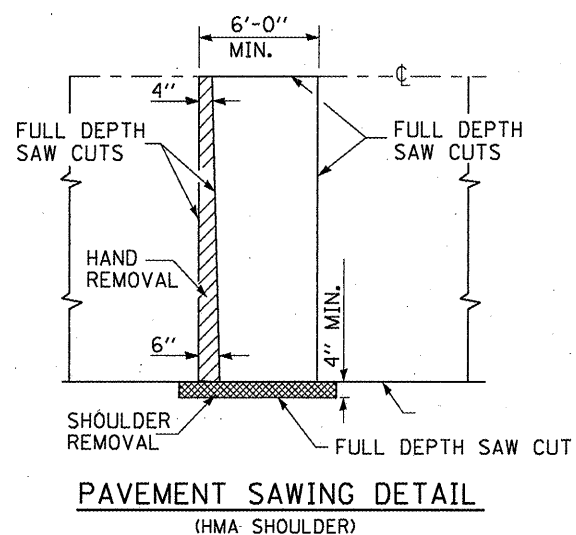
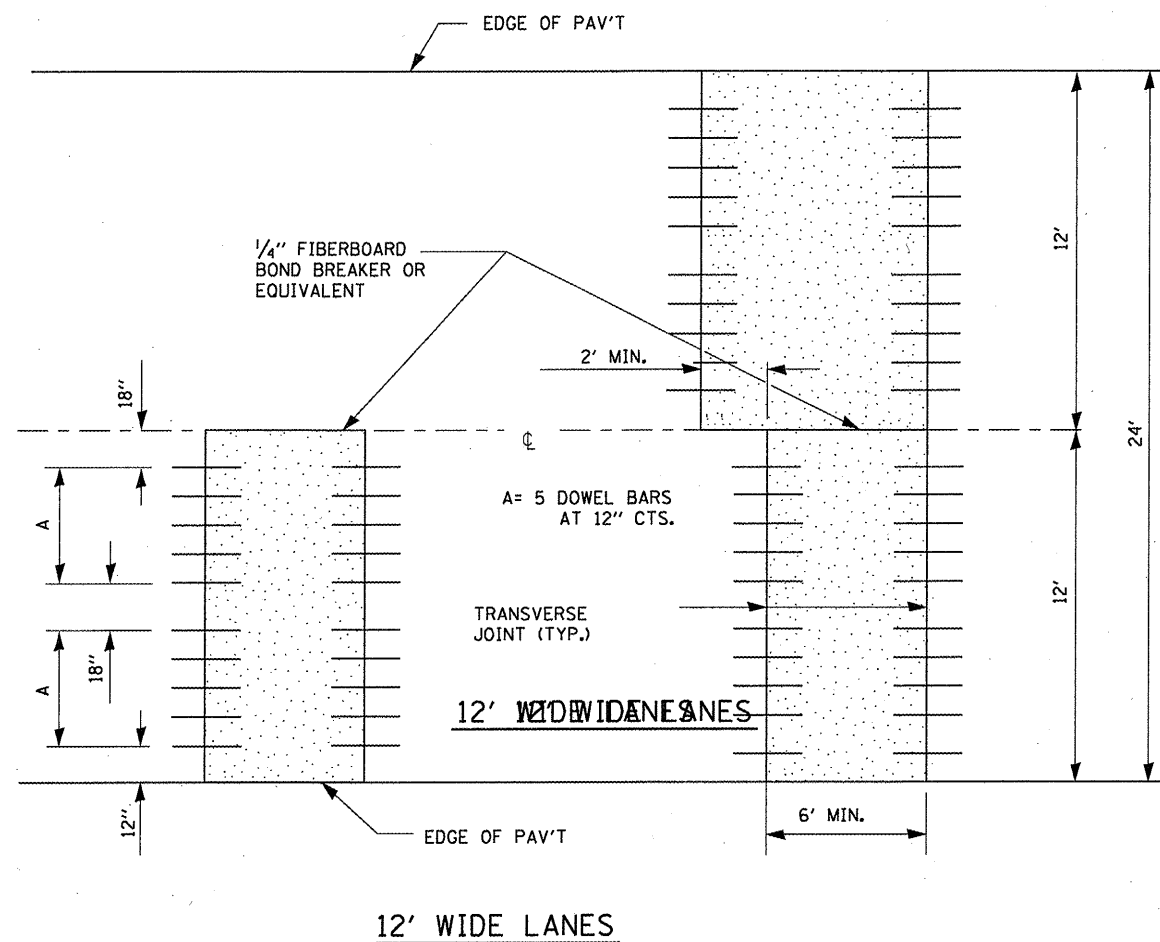


REMOVAL DETAIL

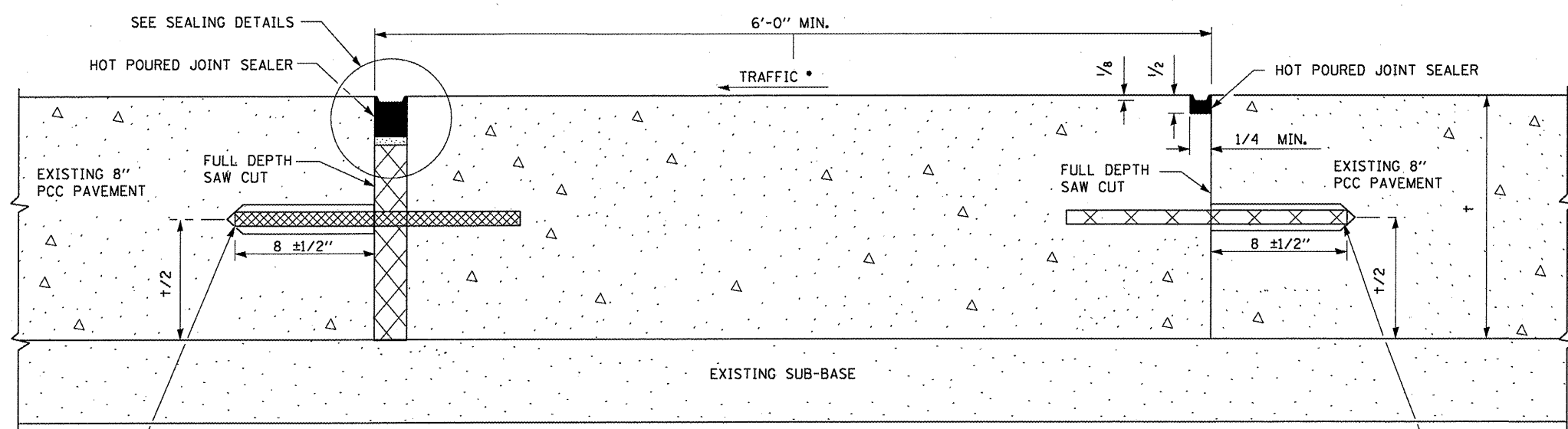
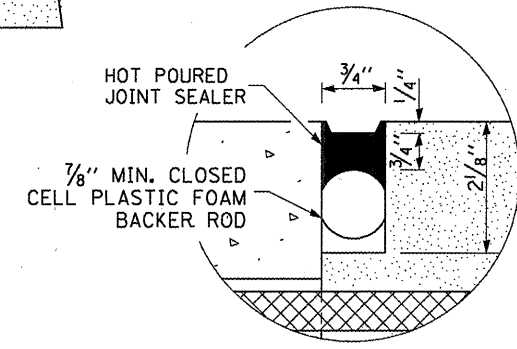
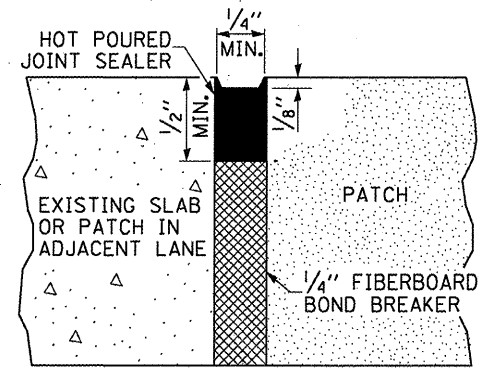
EXISTING LONGITUDINAL REINFORCEMENT BARS	A (min.)	B (min.)	C (min.)
No. 6	6'-0"	21"	19"

NOTES:

- EVERY 3rd INTERSECTION MUST BE TIED
- LAP NEW REINFORCEMENT WITH EXISTING LONGITUDINAL REINFORCEMENT
- VARIABLES: WHERE S_1 AND S_2 ARE $2\frac{1}{2}$ " MIN. AND 12" MAX. $D_1 = 2(S_1)$ AND $D_2 = 2(S_2)$



DOWEL BAR TABLE		
PAVEMENT THICKNESS	DOWEL BAR DIAMETER	HOLE DIAMETER
8" OR GREATER	1 1/2"	1 5/8"
7" THRU 7.99"	1 1/4"	1 3/8"
LESS THAN 7"	1"	1 1/8"

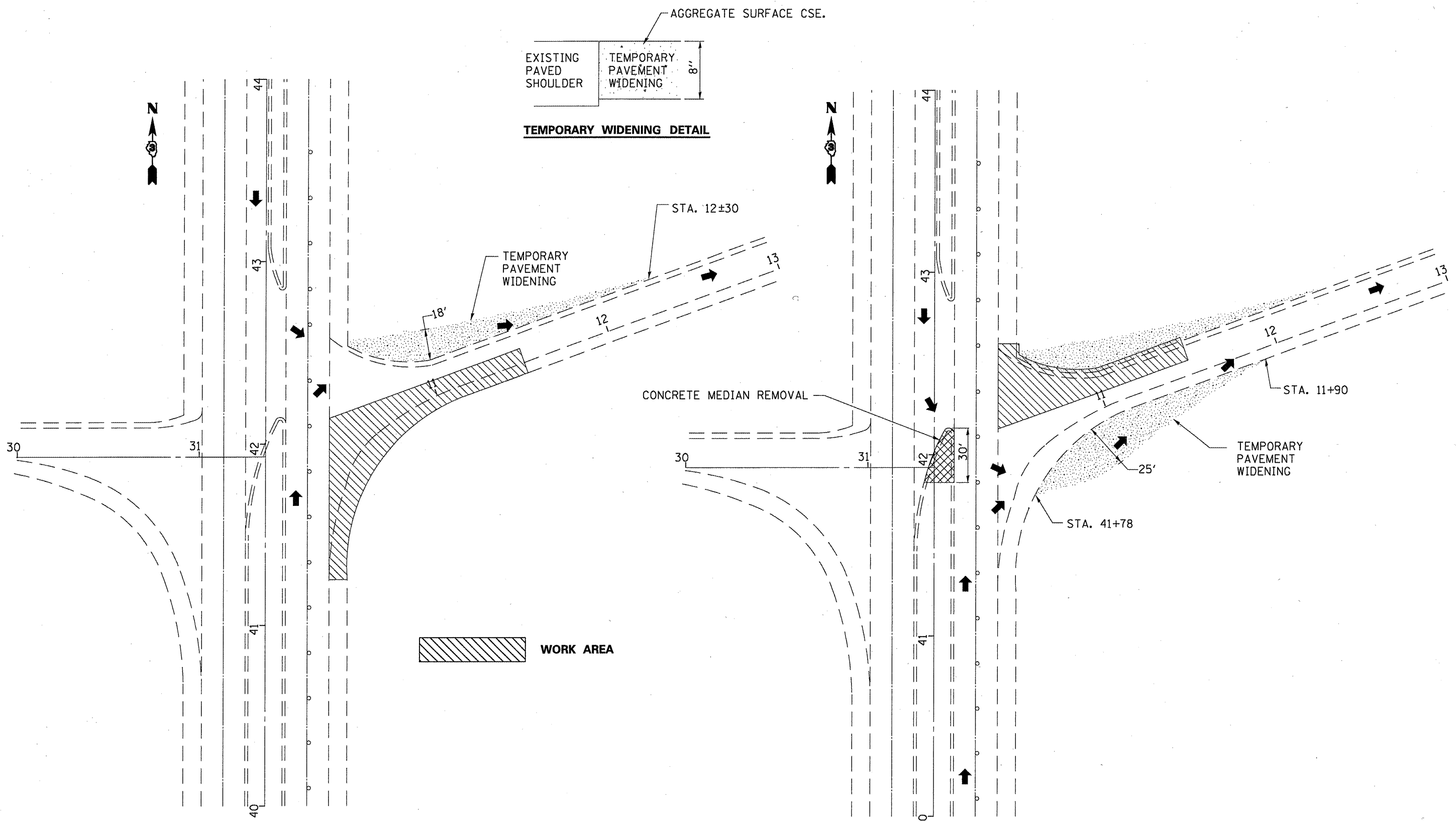


18 (450) Long dowel bars anchored into existing pavement at 12 (300) cts.

No. 10x18 (No. 32x450) Tie bars anchored into existing pavement at 12 (300) cts.

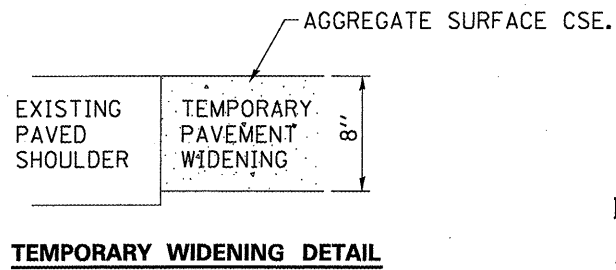
GENERAL NOTES

THE TRANSVERSE JOINTS FOR CLASS B PATCHES SHALL ALIGN WITH JOINTS OR CRACKS IN THE ADJACENT LANE WHENEVER POSSIBLE.
SEE STANDARD 420701 FOR DETAILS OF PAVEMENT FABRIC.



STAGE I

STAGE II



FILE NAME =	USER NAME = woodshankr1	DESIGNED - RON WOODSHANK	REVISED - -----
ct:\pw_work\PIWIDOT\WOODSHANKRL\0188632\0366A39-details.dgn		DRAWN - RON WOODSHANK	REVISED - -----
	PLOT SCALE = 100.0000' / IN.	CHECKED - ---	REVISED - -----
	PLOT DATE = Mar 31, 2010 - 06:16:53 AM	DATE - -----	REVISED - -----

**STATE OF ILLINOIS
DEPARTMENT OF TRANSPORTATION**

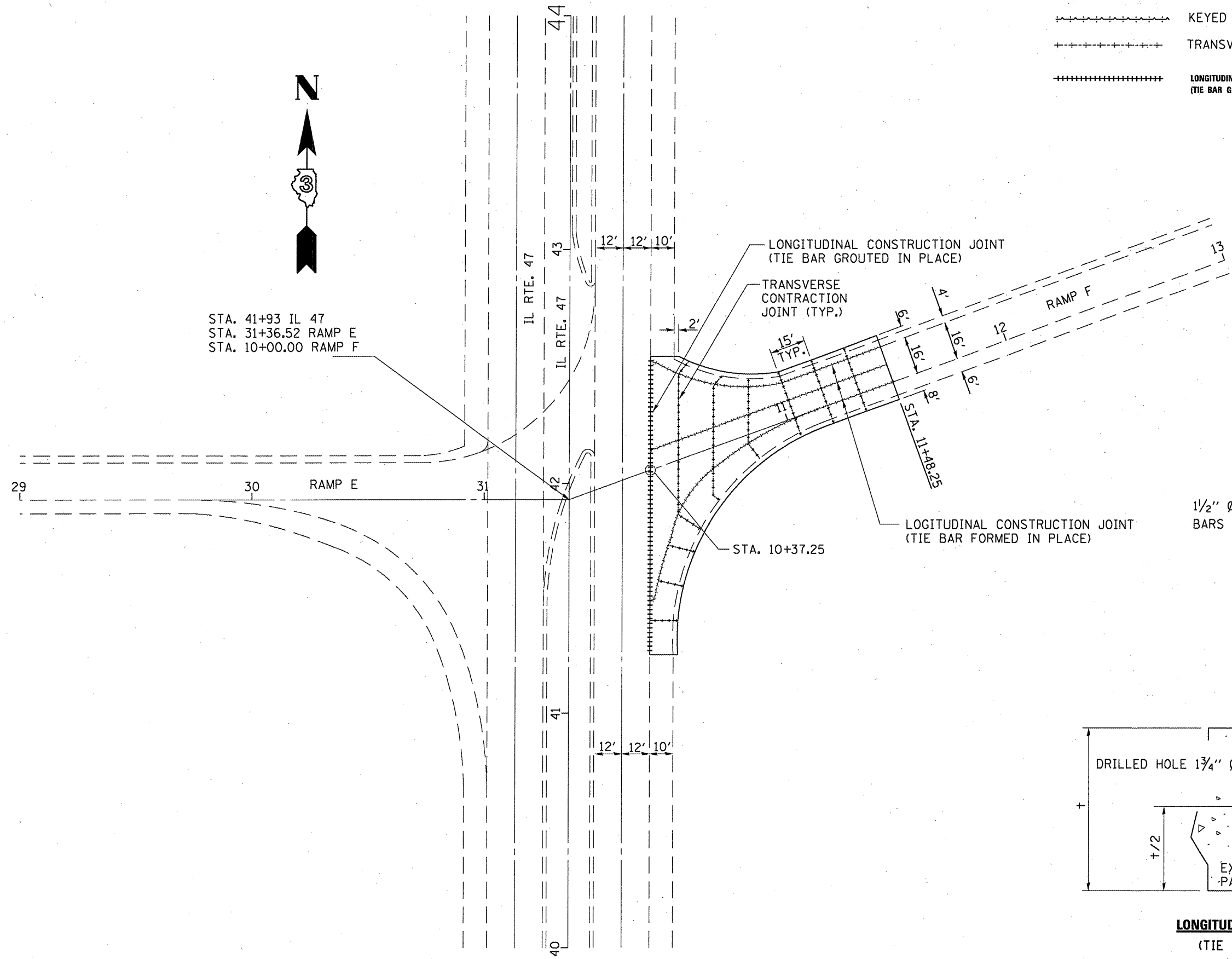
**STAGE CONSTRUCTION DETAILS
FOR RAMP F RECONSTRUCTION**

SCALE: _____ SHEET NO. 1 OF 1 SHEETS STA. _____ TO STA. _____

RTE.	SECTION	COUNTY	TOTAL SHEETS	SHEET NO.
**	D3 PATCHING 2011-6	GRUNDY	15	13
** FAI 55 & FAP 326		CONTRACT NO. 66A39		
ILLINOIS				



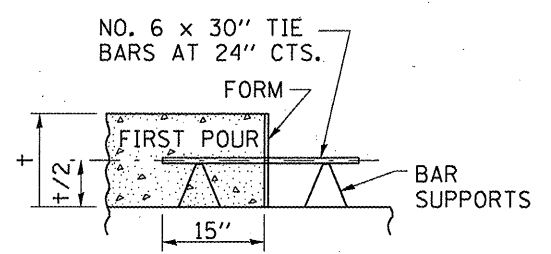
STA. 41+93 IL 47
 STA. 31+36.52 RAMP E
 STA. 10+00.00 RAMP F



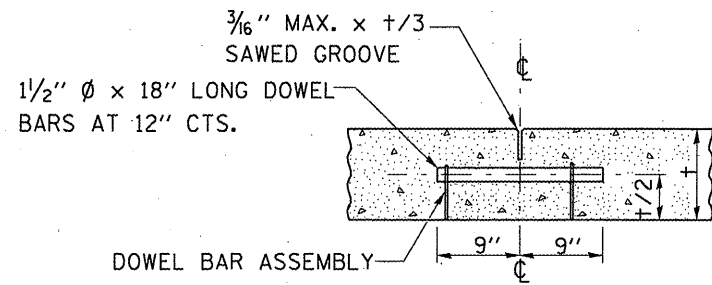
PLAN

LEGEND

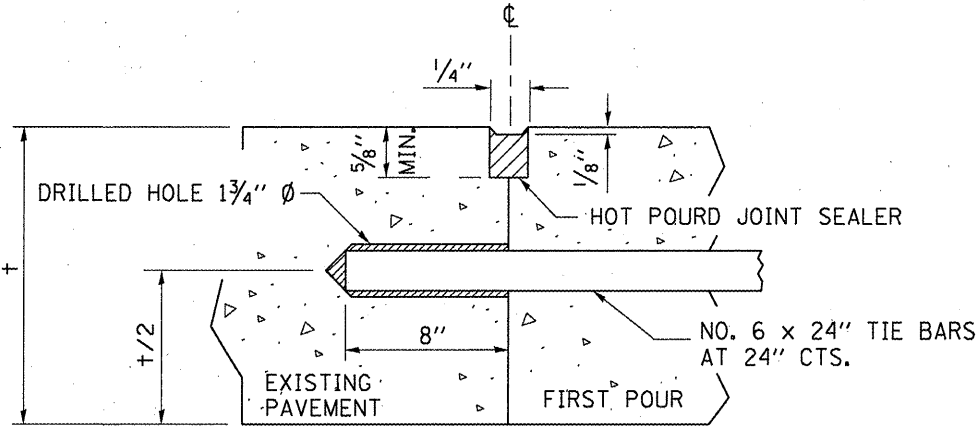
- KEYED LONGITUDINAL JOINT WITH TIE BARS
- TRANSVERSE CONTRACTION JOINT
- LONGITUDINAL CONSTRUCTION JOINT (TIE BAR GROUTED IN PLACE)



LONGITUDINAL CONSTRUCTION JOINT
 (TIE BAR FORMED IN PLACE)

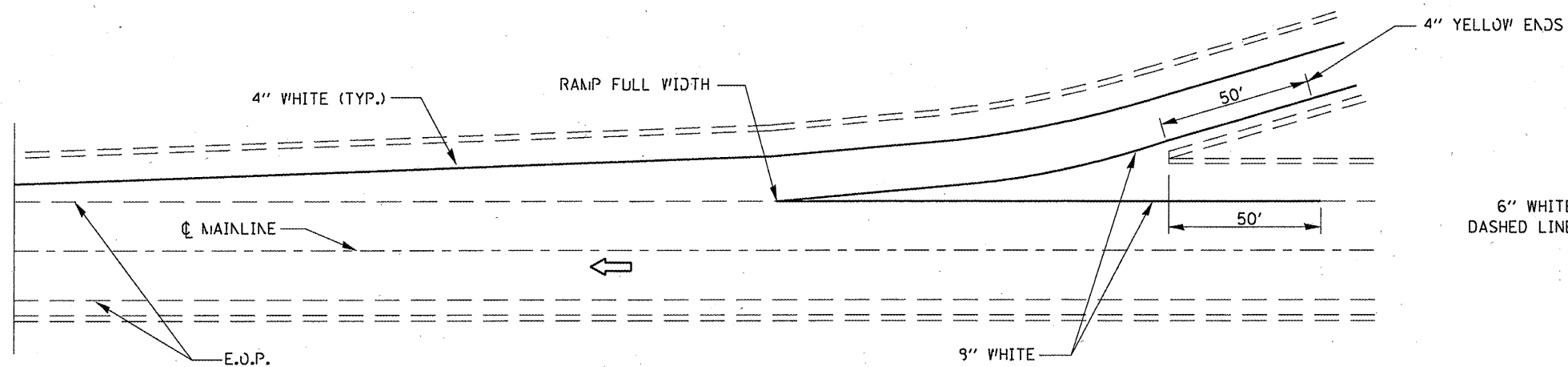


TRANSVERSE CONTRACTION JOINT

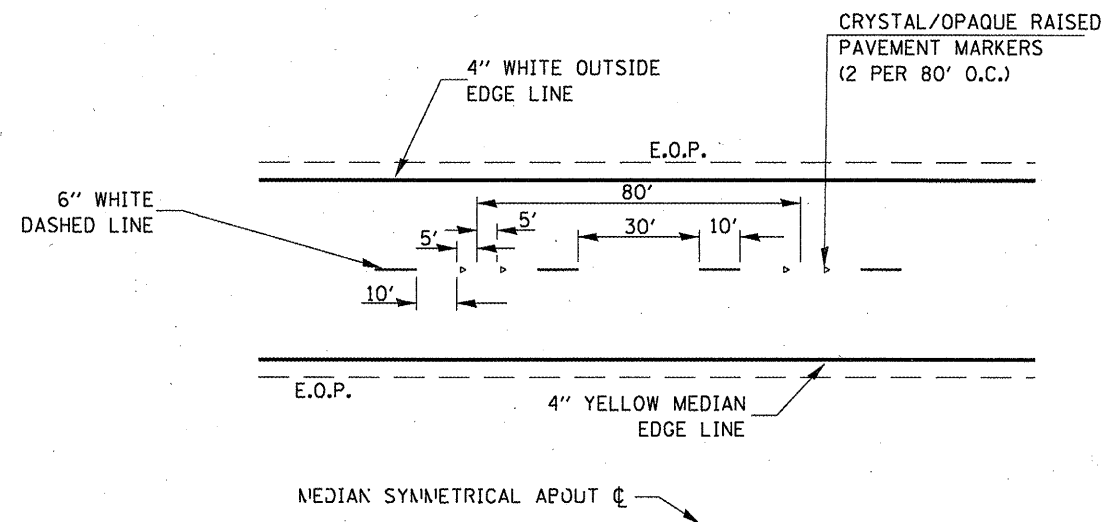


LONGITUDINAL CONSTRUCTION JOINT
 (TIE BAR GROUTED IN PLACE)

FILE NAME =	USER NAME = woodshankr1	DESIGNED - RON WOODSHANK	REVISED -	STATE OF ILLINOIS DEPARTMENT OF TRANSPORTATION	RAMP F RECONSTRUCTION DETAILS	RTE.	SECTION	COUNTY	TOTAL SHEETS	SHEET NO.
ct:\pw\work\PWIDOT\WOODSHANKR1\20180632	D366A39-details.dgn	DRAWN - RON WOODSHANK	REVISED -			**	D3 PATCHING 2011-6	GRUNDY	15	14
	PLOT SCALE = 100.0000' / IN.	CHECKED -	REVISED -			**	FAI 55 & FAP 326			CONTRACT NO. 66A39
	PLOT DATE = Mar 31, 2018 - 06:16:58 AM	DATE -	REVISED -			ILLINOIS				
					SCALE: _____	SHEET NO. 1 OF 1 SHEETS	STA. _____	TO STA. _____		

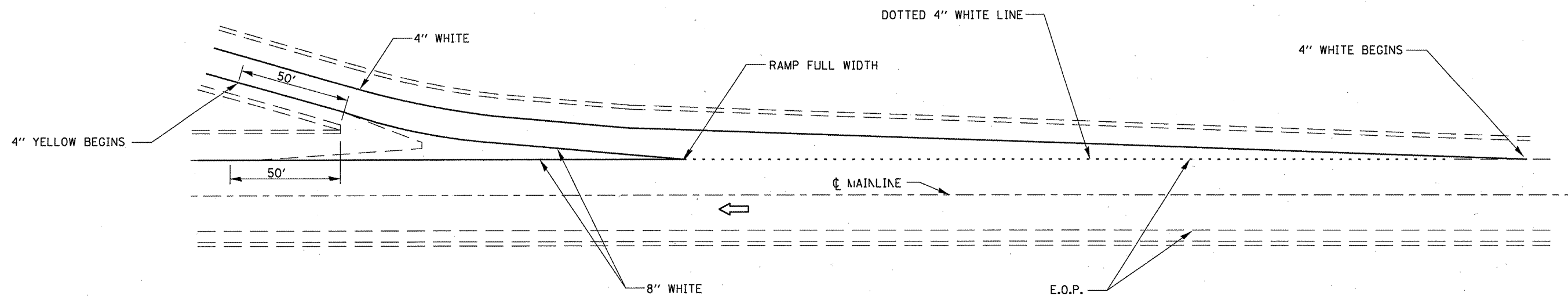


TYPICAL PAVEMENT MARKING FOR ENTRANCE RAMP TERMINALS



TYPICAL PAVEMENT MARKINGS

NOTE:
 WHEN PATCHING IS ADJACENT TO 8" PAVEMENT MARKING LINE
 THE 8" STRIP SHALL BE REPLACED WITH TWO 4" LINES.
 RAISED REFLECTIVE PAVEMENT MARKERS THAT FALL WITHIN
 PATCHED BOUNDARIES WILL NOT BE REPLACED.



TYPICAL PAVEMENT MARKINGS FOR EXIT RAMP TERMINALS

FILE NAME =	USER NAME = woodshankr1	DESIGNED - RON WOODSHANK	REVISED -	STATE OF ILLINOIS DEPARTMENT OF TRANSPORTATION	TYPICAL PAVEMENT MARKING	RTE.	SECTION	COUNTY	TOTAL SHEETS	SHEET NO.
ci:\pwwork\VPWIDOT\WOODSHANKRL\d0188632	D366A39-details.dgn	DRAWN - RON WOODSHANK	REVISED -			**	D3 PATCHING 2011-6	GRUNDY	15	15
	PLOT SCALE = 100.0000' / IN.	CHECKED -	REVISED -			**	FAI 55 & FAP 326			CONTRACT NO. 66A39
	PLOT DATE = Mar 31, 2010 - 06:17:03 AM	DATE -	REVISED -					ILLINOIS		
				SCALE: _____	SHEET NO. 1 OF 1 SHEETS	STA. _____	TO STA. _____			