

F.A.P. RTE.	SECTION	COUNTY	TOTAL SHEETS	SHEET NO.
587	(22BR)I-1	BUREAU	6	1
FED. ROAD DIST. NO.	ILLINOIS	CONTRACT NO. 66A46		

INDEX OF SHEETS

1. COVER SHEET
2. GENERAL NOTES
3. SUMMARY OF QUANTITIES
4. TYPICAL SECTION
5. PLAN AND ELEVATION - SN 006-0147
6. REPAIR DETAILS

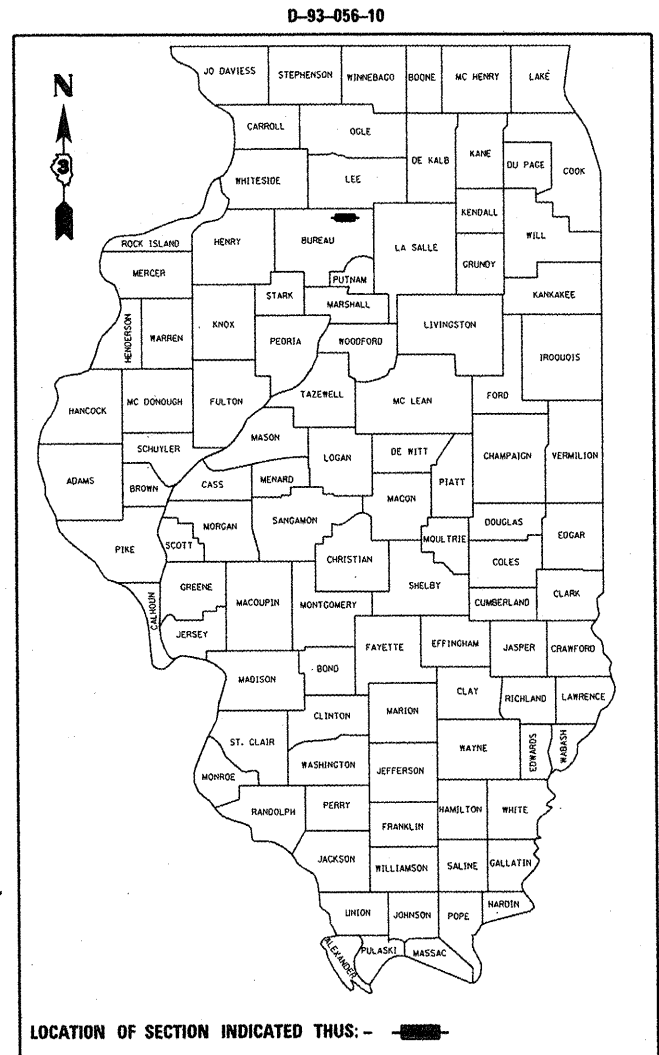
STANDARDS

- | | |
|-----------|--|
| 001006 | DECIMAL OF AN INCH AND OF A FOOT |
| 701001-02 | OFF-ROAD OPERATIONS 2L, 2W, MORE THAN 4.5 m (15') AWAY |
| 701006-03 | OFF-ROAD OPERATIONS 2L, 2W, 4.5 m (15') TO 600 mm (24") FROM PAVEMENT EDGE |
| 701201-03 | LANE CLOSURE, 2L, 2W, DAY ONLY, FOR SPEEDS \geq 45 MPH |
| 701301-03 | LANE CLOSURE, 2L, 2W, SHORT TIME OPERATIONS |
| 701901-01 | TRAFFIC CONTROL DEVICES |

STATE OF ILLINOIS
DEPARTMENT OF TRANSPORTATION
DIVISION OF HIGHWAYS
PROPOSED
HIGHWAY PLANS

FAP ROUTE 587 (US 34)
SECTION (22BR)I-1

BUREAU COUNTY
C-93-133-10
DECK SLAB SUPPORT



FUNCTIONAL CLASSIFICATION
RURAL - MINOR ARTERIAL
F.A.P. ROUTE 587 (US 34)
2007 ADT = 1850
P.V = 89.2% M.U. = 5.4% S.U. = 5.4%

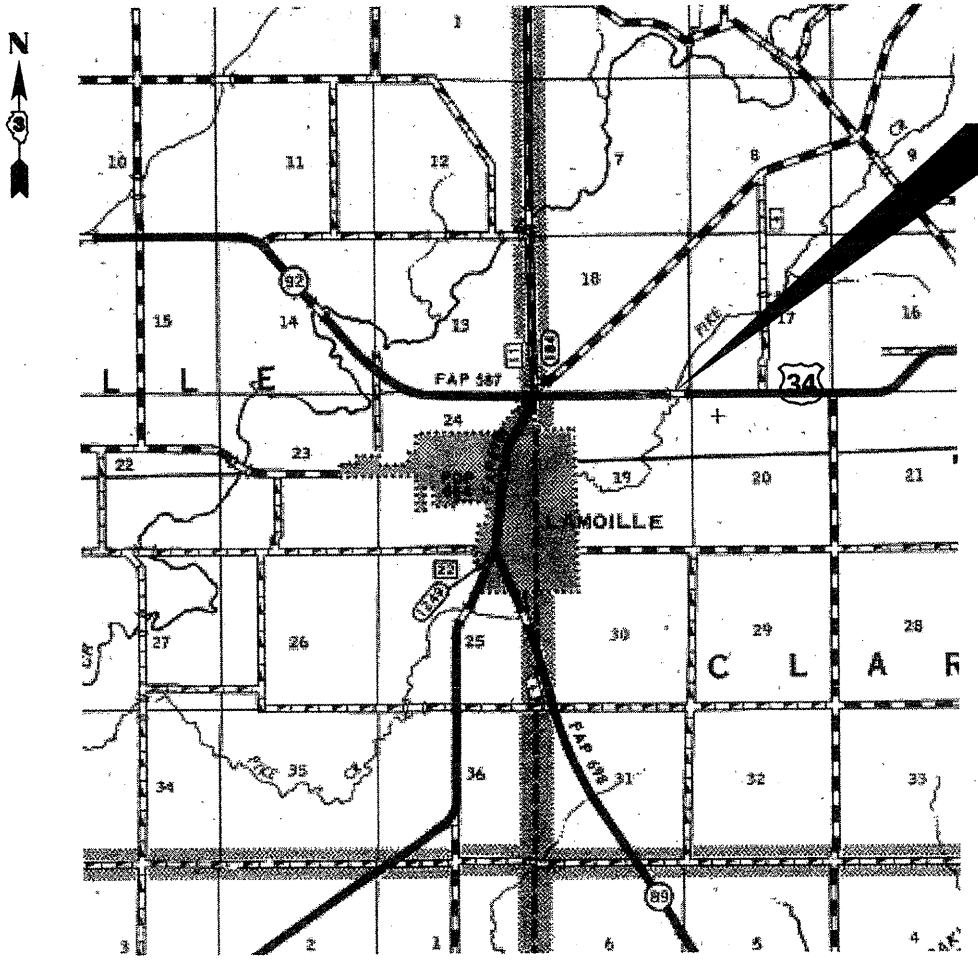
STATE OF ILLINOIS
DEPARTMENT OF TRANSPORTATION
DIVISION OF HIGHWAYS

SUBMITTED 4/11 2010

DEPUTY DIRECTOR OF HIGHWAYS, REGION ENGINEER
May 7 2010

ACTING ENGINEER OF DESIGN AND ENVIRONMENT
May 7 2010

DIRECTOR OF HIGHWAYS, CHIEF ENGINEER



PROJECT LOCATION
SN 006-0147
1.0 MILE NORTHEAST
OF LAMOILLE

LOCATION MAP
NOT TO SCALE
POINT LOCATION

MICROFILMED _____
REEL NUMBER _____
AWARDED _____
RESIDENT ENGINEER _____
AS BUILT CHANGES WERE MADE
ON THE FOLLOWING SHEETS _____

J.U.L.I.E.
JOINT UTILITY LOCATION INFORMATION FOR EXCAVATION
1-800-892-0123

PROJECT ENGINEER : JOE KANNEL
UNIT CHIEF : RON WOODSHANK
TOWNSHIP : CLARION

CONTRACT NO. 66A46

PRINTED BY THE AUTHORITY
OF THE STATE OF ILLINOIS

GENERAL NOTES

PLAN DIMENSIONS AND DETAILS RELATIVE TO EXISTING PLANS ARE SUBJECT TO ROUTINE VARIATIONS. THE CONTRACTOR SHALL FIELD VERIFY EXISTING DIMENSIONS AND DETAILS AFFECTING NEW CONSTRUCTION AND MAKE NECESSARY APPROVED ADJUSTMENTS PRIOR TO CONSTRUCTION OR ORDERING OF MATERIALS. SUCH VARIATIONS SHALL NOT BE CAUSE FOR ADDITIONAL COMPENSATION FOR A CHANGE IN THE SCOPE OF THE WORK. HOWEVER, THE CONTRACTOR WILL BE PAID FOR THE QUANTITY FURNISHED BASED UPON THE UNIT BID PRICE FOR THE WORK.

FOR STABILIZATION, ALL TYPE III BARRICADES SHALL REQUIRE A MINIMUM OF FOUR SAND BAGS PER BARRICADE.

ANY REFERENCE TO A STANDARD IN THESE PLANS SHALL BE INTERPRETED TO MEAN THE EDITION AS INDICATED BY THE SUBNUMBER LISTED ON THE INDEX OF SHEETS OR THE COPY OF THE STANDARD INCLUDED IN THESE PLANS.

DATE: 4/1/10

PREPARED BY: *Tom Benoit*
ACTING DISTRICT STUDIES & PLANS ENGINEER

EXAMINED BY: *Herbert K. Jung, Jr.*
DISTRICT CONSTRUCTION ENGINEER

Wayne G. Dilling
DISTRICT MATERIALS ENGINEER

James A. Husker
DISTRICT OPERATIONS ENGINEER

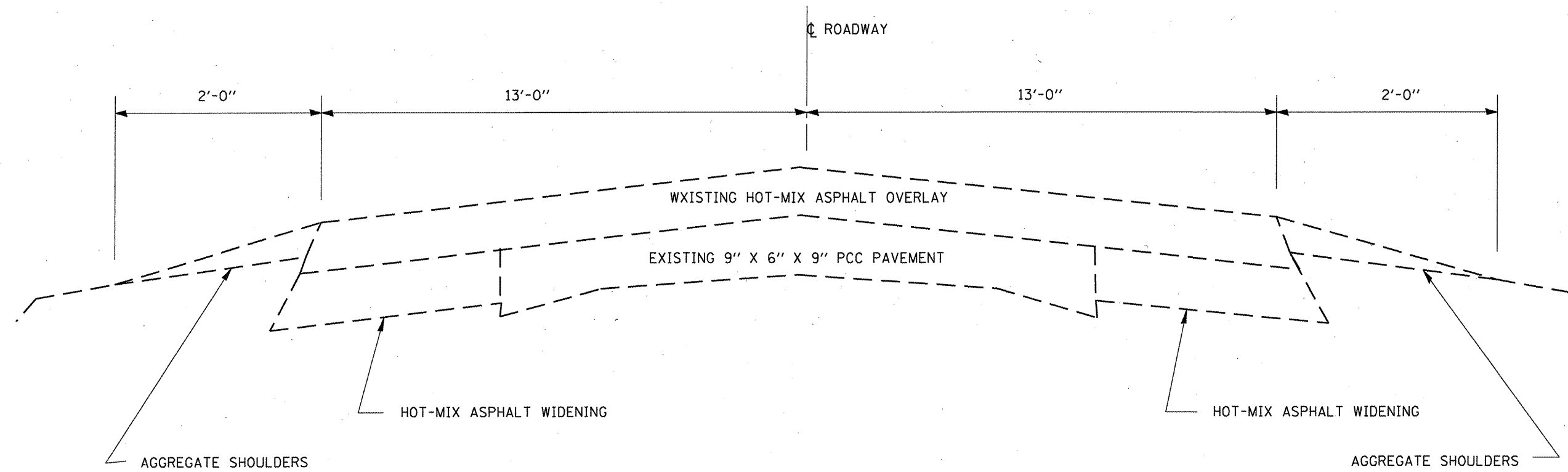
FILE NAME = c:\pwwork\pwwid01\WOODSHANKRL\d0189938	USER NAME = woodshankr1	DESIGNED - RON WOODSHANK	REVISED - ---	STATE OF ILLINOIS DEPARTMENT OF TRANSPORTATION	GENERAL NOTES	F.A.P. RTE. =	SECTION	COUNTY	TOTAL SHEETS	SHEET NO.
	0366A46-details.dgn	DRAWN - RON WOODSHANK	REVISED - ---			587	(22BR)-1	BUREAU	6	2
	PLOT SCALE = 1/8" = 1' IN.	CHECKED - ---	REVISED - ---			CONTRACT NO. 66A46				
	PLOT DATE = Mar 31, 2010 - 05:43:45 AM	DATE - ---	REVISED - ---			FED. ROAD DIST. NO. - ILLINOIS FED. AID PROJECT				
SCALE: _____ SHEET NO. 1 OF 1 SHEETS STA. _____ TO STA. _____										

SUMMARY OF QUANTITIES

CONSTRUCTION CODE TYPE: SFTY-2A

RURAL
100% STATE
TOTAL
QUANTITY

CODE NO.	ITEM	UNIT	TOTAL QUANTITY
50500405	FURNISHING AND ERECTING STRUCTURAL STEEL	POUND	16750
67100100	MOBILIZATION	L SUM	1
70100450	TRAFFIC CONTROL AND PROTECTION, STANDARD 701201	L SUM	1



FILE NAME = c:\pwwork\pwwid\WOODSHANKR\20189938	USER NAME = woodshankr1	DESIGNED - RON WOODSHANK	REVISED - ---	STATE OF ILLINOIS DEPARTMENT OF TRANSPORTATION	TYPICAL SECTION	F.A.P. RTE.	SECTION	COUNTY	TOTAL SHEETS	SHEET NO.
	D368A46-details.dgn	DRAWN - RON WOODSHANK	REVISED - ---			587	(22BR)1-1	BUREAU	6	4
	PLOT SCALE = 100.0000' / IN.	CHECKED - ---	REVISED - ---			CONTRACT NO. 66A46				
	PLOT DATE = Mar 31, 2019 - 05:43:58 AM	DATE - ---	REVISED - ---			ILLINOIS FED. AID PROJECT				
					SCALE: _____	SHEET NO. 1 OF 1 SHEETS		STA. _____ TO STA. _____		

STATE OF ILLINOIS
DEPARTMENT OF TRANSPORTATION

* Contractor is to verify beam length prior to ordering material. Other sections meeting the section modulus requirements shown may be allowed subject to approval by the Bureau of Bridges and Structures. Maximum Girder depth = 27" for Spans 1 & 2 and 27" for Span 3. No additional payment will be allowed if the contractor chooses a heavier steel section than the one specified in the plans. (Min $S_x = 214 \text{ in}^3$ for Spans 1 & 2 and 111 in^3 for Span 3)

GENERAL NOTES

All structural steel shall conform to AASHTO Classification M-270 Gr. 36, unless otherwise noted.

Plan dimensions and details relative to existing plans are subject to nominal construction variations. The Contractor shall field verify existing dimensions and details affecting new construction and make necessary approved adjustments prior to construction or ordering of materials. Such variations shall not be cause for additional compensation for a change in scope of the work, however, the Contractor will be paid for the quantity actually furnished at the unit price bid for the work.

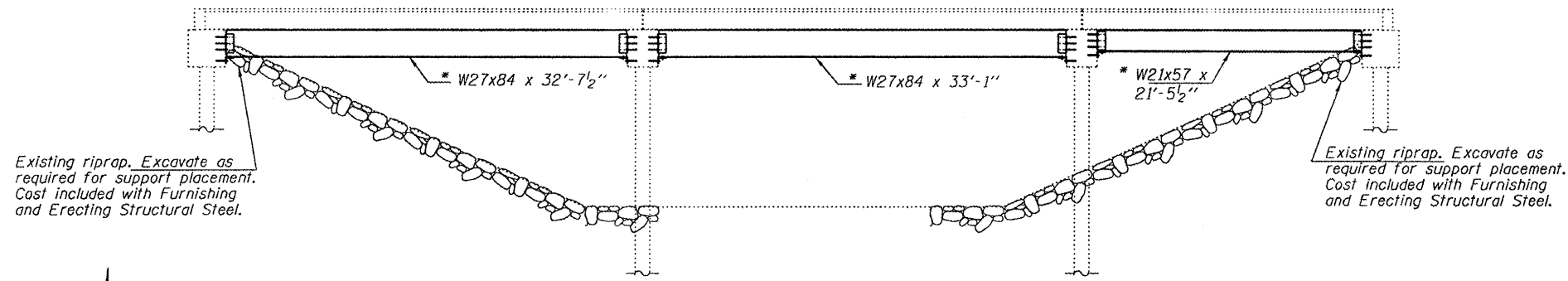
The Contractor is advised that the existing PPC Deck Beams are in a deteriorated condition with reduced load carrying capacity. It is the contractor's responsibility to account for the condition of the beams when developing construction procedures.

See Section 584 of the Standard Specifications for Epoxy Grouting of Threaded Rods; Minimum embedment 9".

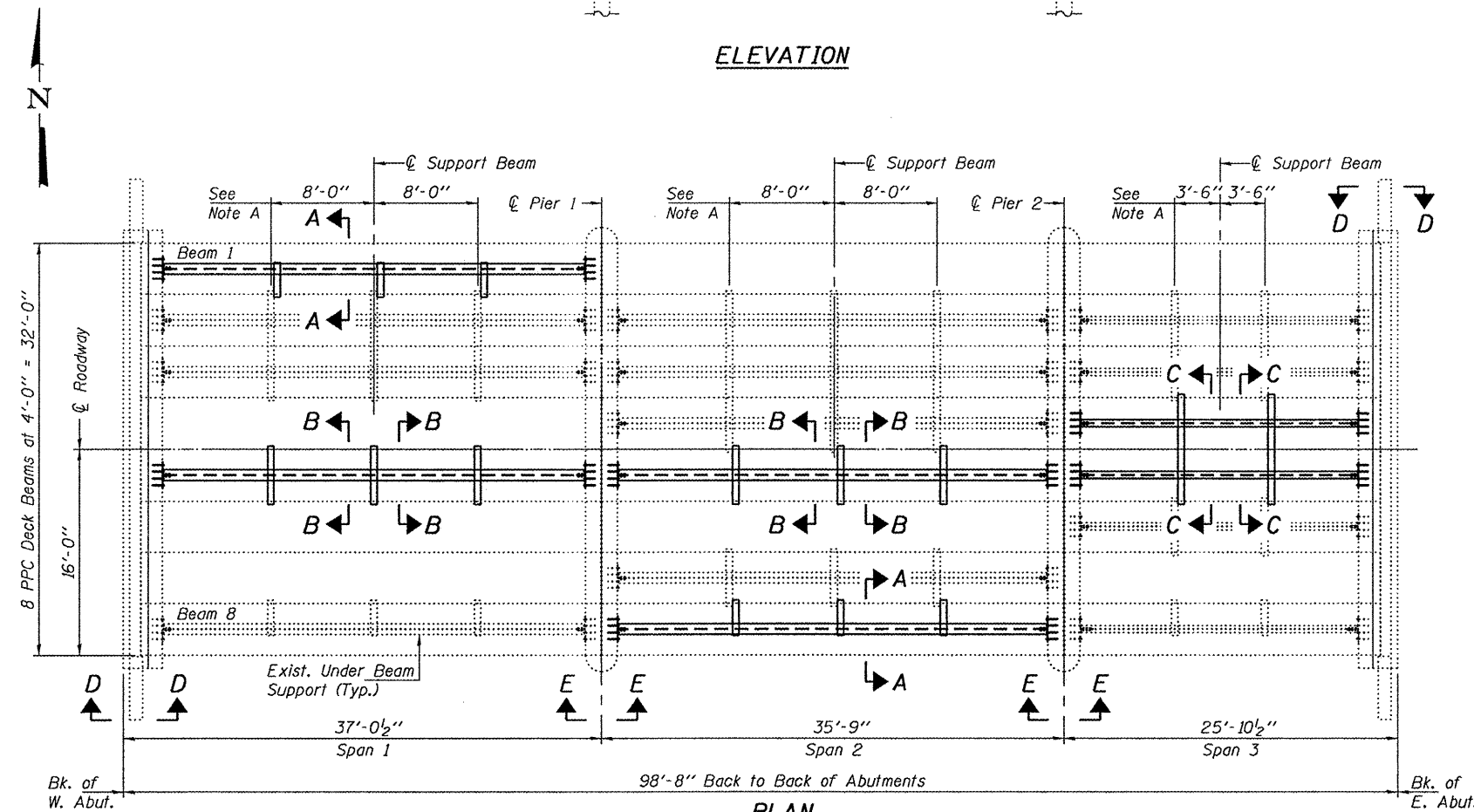
If the contractor's procedure for placement of beams involves placement of cranes or other heavy equipment on the bridge, a detailed procedure shall be submitted to the Engineer for approval. The procedure shall include calculations, prepared and sealed by an Illinois Licensed Structural Engineer, verifying that the equipment and procedure used will not overstress the existing beams. To distribute load to multiple beams and protect the existing surface, in all cases a double layer mat of heavy timbers shall be used at all times under crane tracks or wheels and any outriggers in the down position. If necessary, shims shall be used under the crane mat to ensure uniform contact with the underlying beams.

The cost of epoxy grouting threaded rods on the pier cap, abutments and beams shall be included with Furnishing and Erecting Structural Steel.

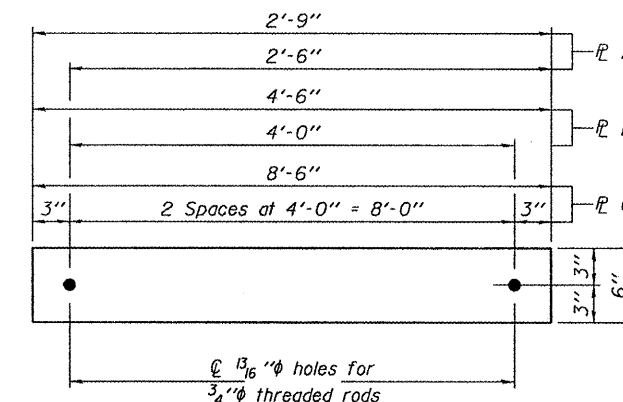
The Contractor has the option of using used steel. See Special Provisions.



ELEVATION



PLAN



TRANSVERSE TIE R'S

- R A 1/2" x 2'-9" x 6" (6 Req'd)
- R B 1/2" x 4'-6" x 6" (6 Req'd)
- R C 1/2" x 8'-6" x 6" (2 Req'd)

TOTAL BILL OF MATERIAL

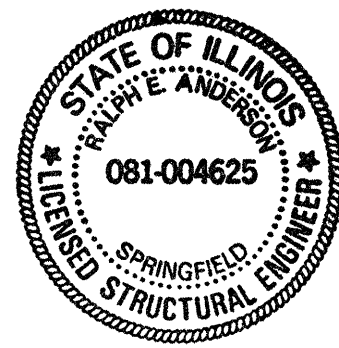
ITEM	UNIT	QUANTITY
Furnishing and Erecting Structural Steel	Pound	16,750

PLAN & ELEVATION
F.A. RTE. 587 OVER PIKE CREEK
SN 006-0147

NOTE A:
⊕ Transverse tie R's (3 per spans 1 & 2, and 2 per span 3). Place additional shims at midpoints between tie R's. Securely weld shims to top flange of support beam. Minimum shim size is 6" x flange width. Adjust spacing of new Transverse Tie R's to miss existing Transverse Tie R's.

DESIGNED *Vic H. Veliz*
CHECKED *[Signature]*
DRAWN Kyle M. Steffen
CHECKED *[Signature]*

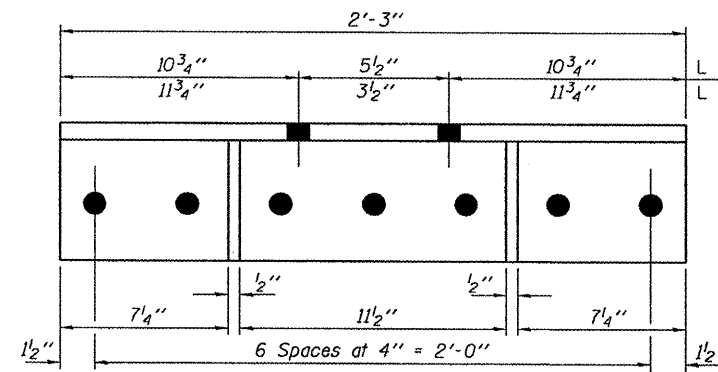
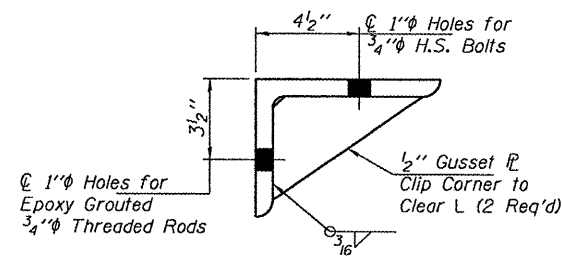
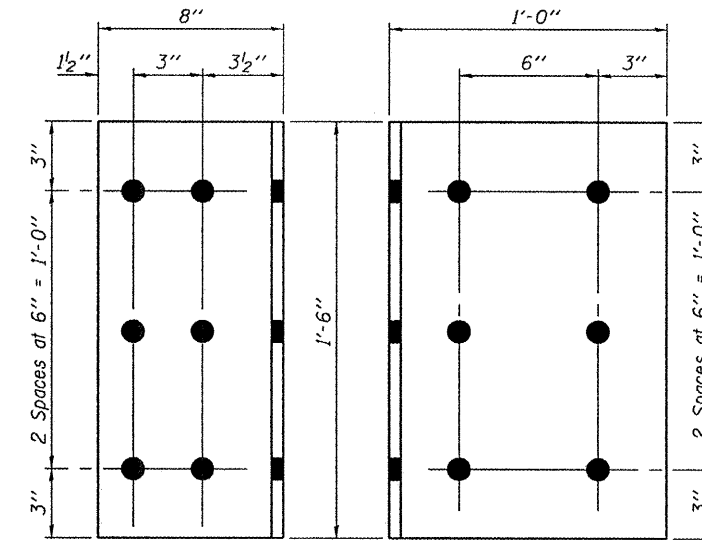
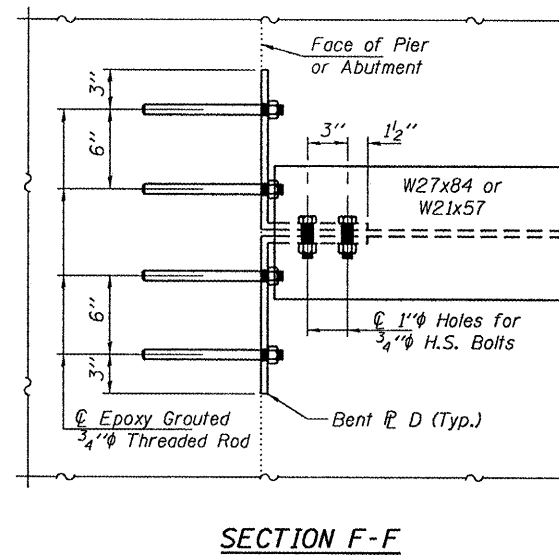
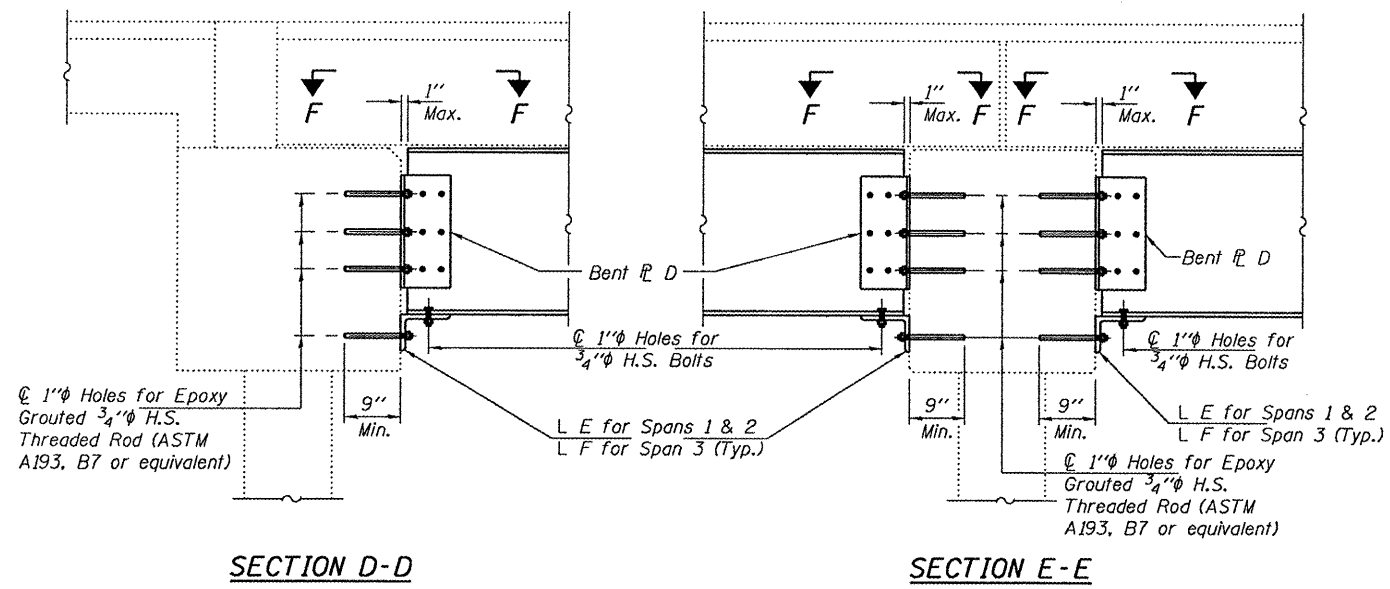
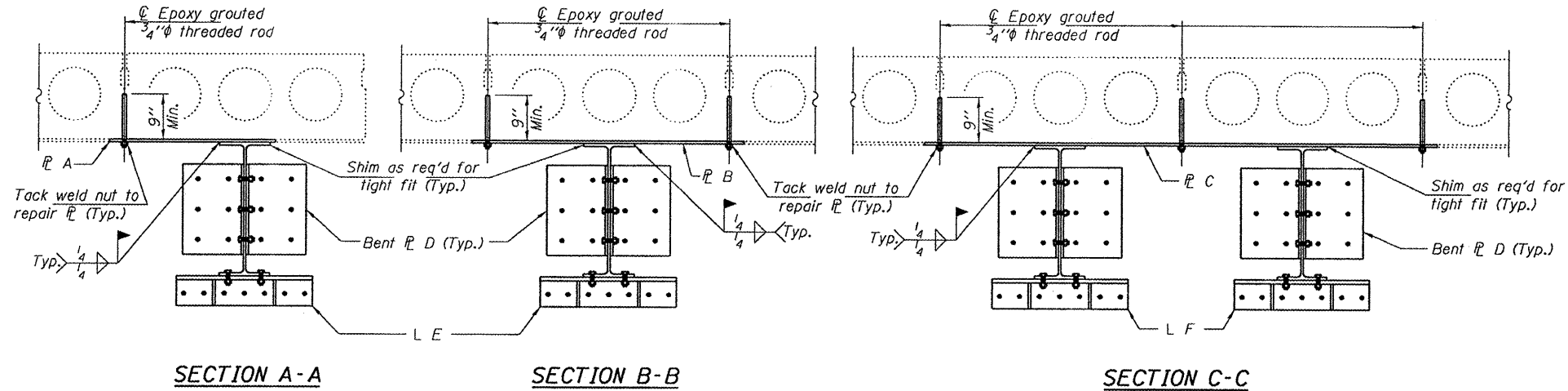
APRIL 19, 2010
EXAMINED *[Signature]*
PASSED *Ralph E. Anderson*
ENGINEER OF BRIDGES AND STRUCTURES



Expires: November 30, 2010

SHEET NO. 1	F.A. RTE.	SECTION	COUNTY	TOTAL SHEETS	SHEET NO.
2 SHEETS	587	(22-BR)I-1	BUREAU	6	5
			CONTRACT NO. 66A46		
FED. ROAD DIST. NO.		ILLINOIS FED. AID PROJECT			

STATE OF ILLINOIS
DEPARTMENT OF TRANSPORTATION



REPAIR DETAILS
F.A. RTE. 587 OVER PIKE CREEK
SN 006-0147

DESIGNED	VHV
CHECKED	DAB
DRAWN	Kyle M. Steffen
CHECKED	VHV DAB

APRIL 19, 2010
EXAMINED *Carl P. ...*
PASSED *Ralph E. Anderson*
ENGINEER OF STRUCTURAL SERVICES
ENGINEER OF BRIDGES AND STRUCTURES

SHEET NO. 2 2 SHEETS	F.A. RTE. 587	SECTION (22-BR)I-1	COUNTY BUREAU	TOTAL SHEETS 6	SHEET NO. 6
	CONTRACT NO. 66A46				
FED. ROAD DIST. NO. ILLINOIS FED. AID PROJECT					