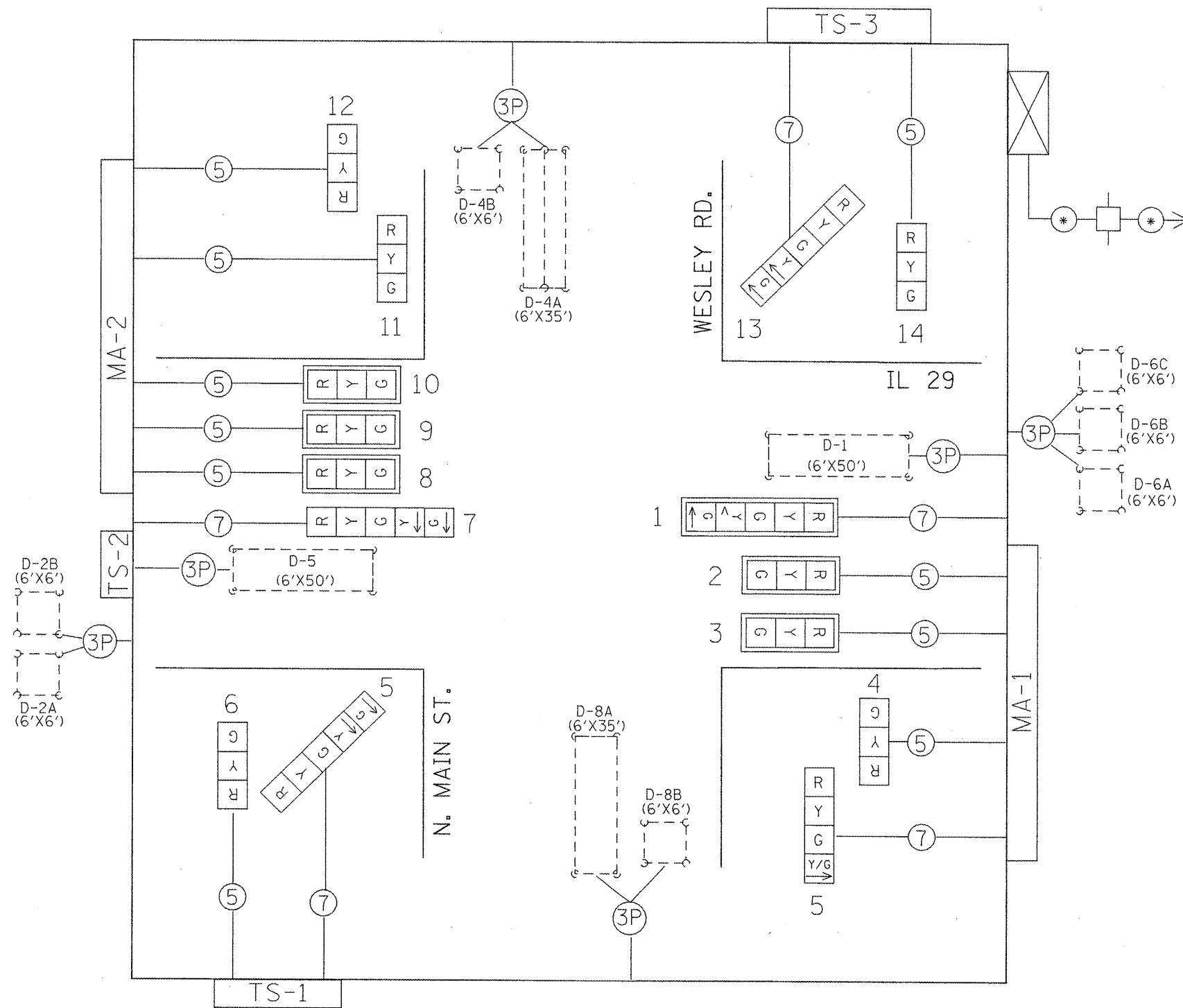
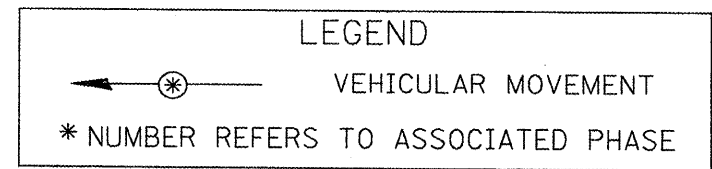
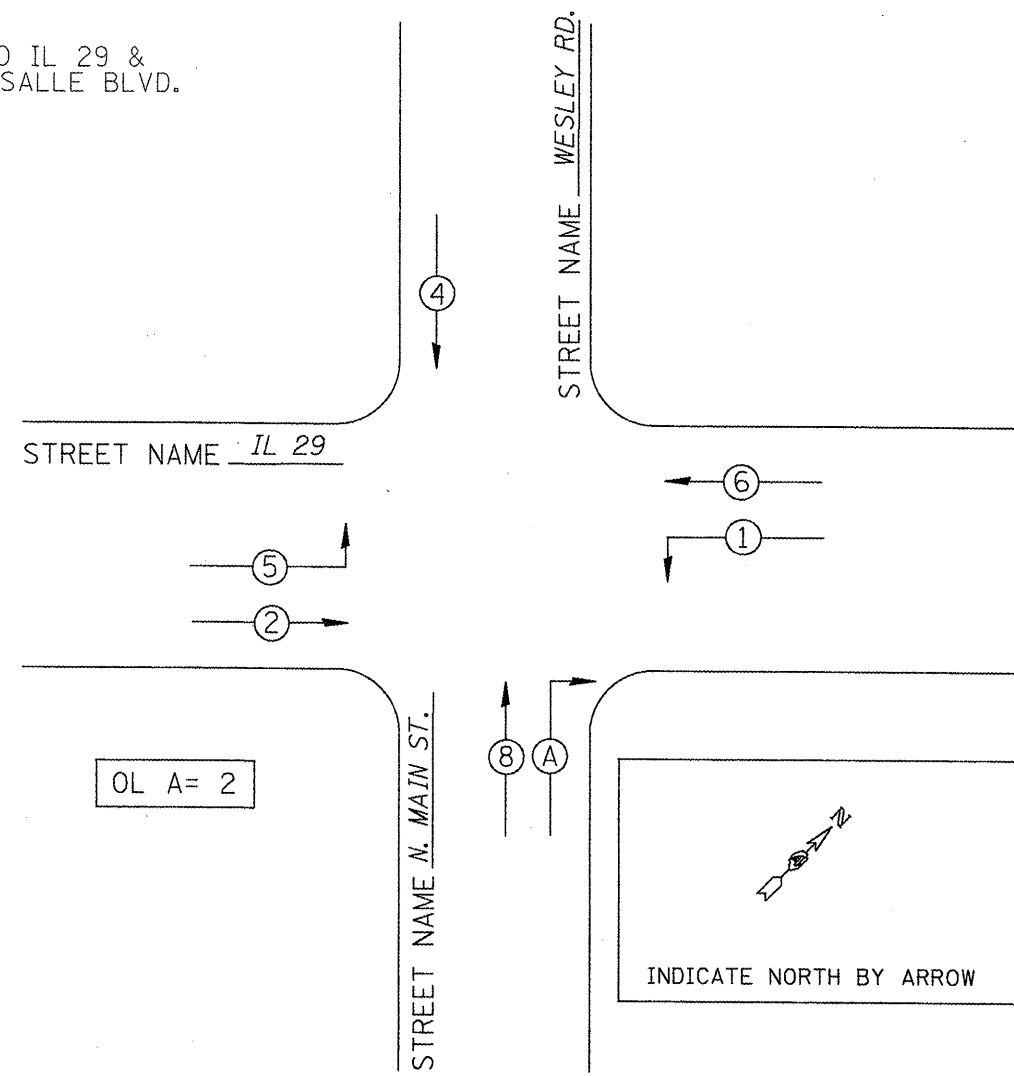


EXISTING CABLE DIAGRAM



EXISTING PHASE DIAGRAM

NAME OF INTERSECTION IL 29 & N. MAIN ST./WESLEY RD.  
 EXISTING CONTROLLER: FULL ACTUATED CONTROLLER (TS-2)  
TYPE IV CABINET, TS-1 BACKPANEL



TRAFFIC SIGNALS LEGEND

- EX. 3 SEC. SIGNAL HEAD W/BACKPLATE
- EX. 3 SEC. SIGNAL HEAD
- EX. CONTROLLER (SIGNAL)
- EX. DETECTOR LOOP (6'X6')
- EX. DETECTOR LOOP (QUADRAPOLE)
- EX. SERVICE INSTALLATION
- \*18 3-PR DETECTOR LOOP CABLE
- 5/C NO. 14 SIGNAL CABLE
- 7/C NO. 14 SIGNAL CABLE

NOT TO SCALE  
 TRAFFIC SIGNALS  
 SHEET 2 OF 12

|  |                        |            |           |   |  |                    |                             |                           |                  |              |
|--|------------------------|------------|-----------|---|--|--------------------|-----------------------------|---------------------------|------------------|--------------|
| FILE NAME = 68590 - IL 29 & Wesley Traffic Signals | USER NAME = lobobidism | DESIGNED - | REVISED - | <b>STATE OF ILLINOIS<br/>DEPARTMENT OF TRANSPORTATION</b> | <b>EXISTING TRAFFIC SIGNAL CABLE AND PHASE DIAGRAMS<br/>IL 29 &amp; N. MAIN ST./WESLEY RD.</b> | F.A.P. RTE. 669    | SECTION (11)RS-9,L-2,N,TS-4 | COUNTY TAZEWELL           | TOTAL SHEETS 122 | SHEET NO. 46 |
| PLOT SCALE = 5/8"=20' / IN.                        |                        | CHECKED -  | REVISED - | SCALE: SHEET NO. OF SHEETS STA. TO STA.                   |  | CONTRACT NO. 68590 |                             | ILLINOIS FED. AID PROJECT |                  |              |
| PLOT DATE = 3/25/2010                              |                        | DATE -     | REVISED - |   |  |                    |                             |                           |                  |              |