

INDEX OF SHEETS

1. COVER SHEET
2. COMMITMENTS, GENERAL NOTES, JOB SPECIFIC NOTES
- 3.-4. SUMMARY OF QUANTITIES
- 5.-11. TYPICAL SECTIONS
- 12.-17. SCHEDULES OF QUANTITIES
18. LINE DIAGRAM
- 19.-22. GUARDRAIL INSTALLATION DETAIL
23. RUMBLE STRIP DETAIL
24. SIDE ROAD TREATMENT DETAIL
- 25.-32. DISTRICT STANDARDS
HIGHWAY STANDARDS

HIGHWAY STANDARDS

442201-03	701006-03	701301-03	701336-05
482011-03	701011-02	701306-02	701901-01
635006-03	701201-03	701311-03	780001-02
701001-02	701206-02	701326-03	781001-03

DISTRICT STANDARDS

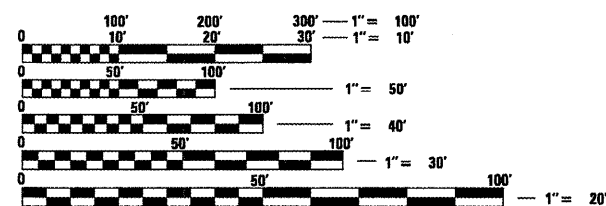
- 406101-D4
- 440001-D4
- 630101-D4
- 780001-D4

DESIGN DESIGNATION

MAJOR COLLECTOR
 ADT: 2900 (2007)
 MU: 40 (2007)
 SU: 275 (2007)

PROJECT DESCRIPTION

THE WORK ON THIS PROJECT CONSISTS OF PATCHING, MILLING, OVERLAYING AND CONSTRUCTION OF HMA SHOULDERS ON IL RTE 8.



FULL SIZE PLANS HAVE BEEN PREPARED USING STANDARD ENGINEERING SCALES. REDUCED SIZED PLANS WILL NOT CONFORM TO STANDARD SCALES. IN MAKING MEASUREMENTS ON REDUCED PLANS, THE ABOVE SCALES MAY BE USED.

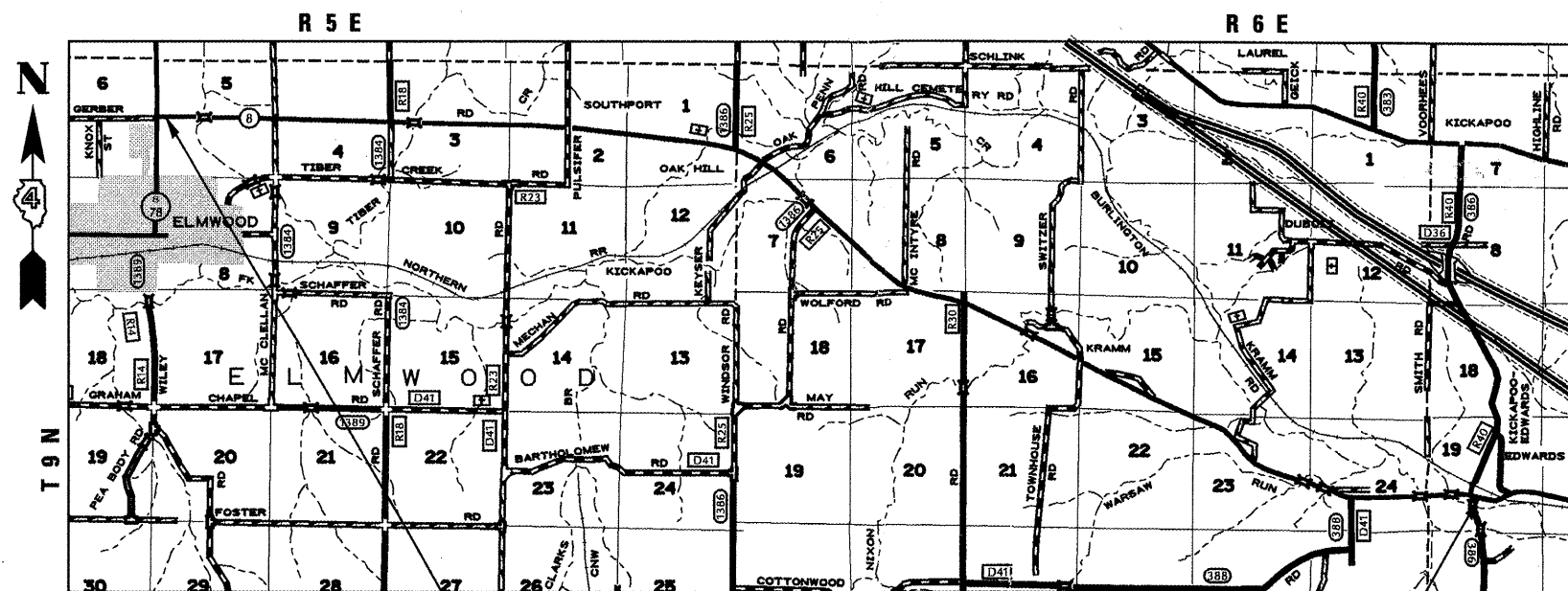
J.U.L.I.E.
 JOINT UTILITY LOCATION INFORMATION FOR EXCAVATION
 1-800-892-0123
 OR 811

PROJECT ENGINEER: CHRISTOPHER MAUSHARD (309) 671-3453
PROJECT MANAGER: MIKE MOHAMED (309) 671-3462
CATALOG NO. 034394-00D
CONTRACT NO. 68961

STATE OF ILLINOIS
DEPARTMENT OF TRANSPORTATION
DIVISION OF HIGHWAYS
PROPOSED
HIGHWAY PLANS

F.A.S. ROUTE 1388 (IL 8)
SECTION Z-[(D-15D)RS-7;(1V,E,2,4)RS-4]

SURFACE MAINTENANCE
PEORIA COUNTY
C-94-056-10



PROJECT BEGINS
STA. 176 + 49.74

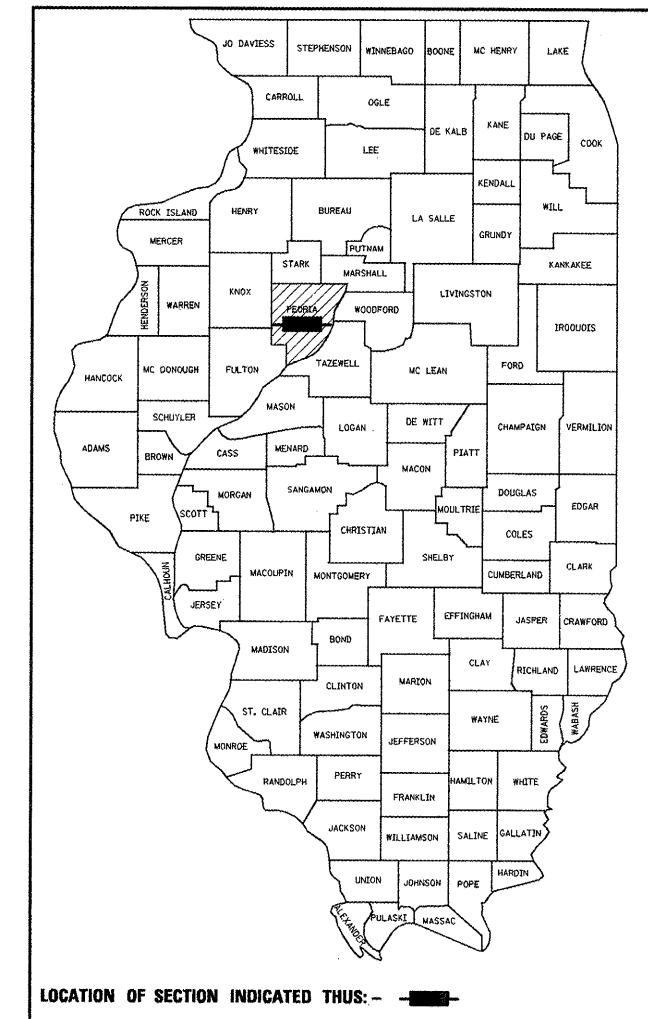
PROJECT ENDS
STA. 825 + 14.00

FOR STRUCTURE OMISSIONS AND STATION EQUATION
 SEE LINE DIAGRAM

GROSS LENGTH = 64,861.91 FT. = 12.38 MILE
 NET LENGTH = 63,730.21 FT. = 12.07 MILE

F.A.S. RTE.	SECTION	COUNTY	TOTAL SHEETS	SHEET NO.
1388	Z-[(D-15D)RS-7;(1V,E,2,4)RS-4]	PEORIA	32	1
		ILLINOIS	CONTRACT NO. 68961	

D-94-030-10



STATE OF ILLINOIS
 DEPARTMENT OF TRANSPORTATION
 DIVISION OF HIGHWAYS

SUBMITTED *M. Mohamed* 7/20/10

May 7 2010
 Deputy Director of Highways, Region Engineer

Scott E. Stitt P.E. / e
 Acting Engineer of Design and Environment

May 7 2010
 Christine M. Reed / e
 Director of Highways, Chief Engineer

PRINTED BY THE AUTHORITY
OF THE STATE OF ILLINOIS

COMMITMENTS

NO COMMITMENTS HAVE BEEN MADE ON THIS PROJECT

GENERAL NOTES

PROPERTY OWNER ACCESS REQUIREMENT

ACCESS MUST BE MAINTAINED TO ALL EXISTING PROPERTIES DURING CONSTRUCTION PER ARTICLE 107.09 UNLESS ARRANGEMENT ARE MADE IN WRITING BY THE CONTRACTOR WITH THE PROPERTY OWNERS WITH A COPY TO THE ENGINEER FOR SHORT-TERM CLOSURES.

ENVIRONMENTAL REVIEWS

PRIOR TO THE USE OF ANY PROPOSED BORROW AREAS, USE AREAS (TEMPORARY ACCESS ROADS, DETOURS, RUN-AROUNDS, ETC.) AND/OR WASTE AREAS, THE CONTRACTOR SHALL FILE THE REQUIRED ENVIRONMENTAL RESOURCE REQUEST SURVEYS ACCORDING TO SECTION 107.22 OF THE STANDARD SPECIFICATIONS. THESE SURVEYS ARE REQUIRED IN ORDER FOR THE DEPARTMENT TO CONDUCT CULTURAL AND BIOLOGICAL RESOURCE SURVEYS FOR THE PROPOSED SITE.

PRIOR TO ANY WASTE MATERIALS BEING REMOVED FROM THE CONSTRUCTION SITE THE REQUIRED ENVIRONMENTAL RESOURCE SURVEYS WILL NEED TO BE OBTAINED AND FILED BY THE CONTRACTOR. EXCESS WASTE PRODUCTS REMOVED FROM THE CONSTRUCTION SITE SHALL BE DISPOSED OF AS REQUIRED IN SECTION 202.03 OF THE STANDARD SPECIFICATIONS.

ANY PROTRUDING METAL BARS SHALL BE REMOVED PRIOR TO THE DISPOSAL OF BROKEN CONCRETE AT APPROVED DISPOSAL SITES.

THE REQUIRED ENVIRONMENTAL RESOURCE DOCUMENTATION SHALL INCLUDE THE FOLLOWING:

- * BDE FORM 2289 (ENVIRONMENTAL SURVEY REQUEST)
- * A LOCATION MAP SHOWING THE SIZE LIMITS AND LOCATION OF THE USE AREA
- * SIGNED PROPERTY OWNER AGREEMENT FORM - D4 PI0100
- * COLOR PHOTOGRAPHS DEPICTING THE USE AREA
- * BORROW AREA ENTRY AGREEMENT FORM - D4 PI0101

PLEASE NOTE THAT A MINIMUM OF TWO WEEKS SHALL BE ALLOWED FOR THE DISTRICT TO OBTAIN THE REQUIRED ENVIRONMENTAL CLEARANCES.

HOT-MIX ASPHALT MIXTURE REQUIREMENTS

MIXTURE USE(S):	SURFACE COURSE, 1 1/2" (IL 78 TO WARSAW RUN CR.)	POLYMERIZED SURFACE COURSE, 1 1/2" (WARSAW RUN CR. TO KICKAPOO-EDWARDS RD.)	CLASS D PATCHES	HMA SHOULDER (SURFACE LIFT)	HMA SHOULDER (LOWER LIFTS - SAFETY SHOULDER)	INCIDENTAL HMA SURFACING
AC/PG:	PG 64-22	SBS or SBR 70-22	PG 64-22	PG 64-22	PG 64-22	PG 64-22
RAP% (MAX):**	15%	10%	25%	15%	25%	15%
DESIGN AIR VOIDS:	4.0% @ N=50	4.0% @ N=50	4.0% @ N=50	3.0% @ N=50	4.0% @ N=50	4.0% @ N=50
MIXTURE COMPOSITION: (GRADATION MIXTURE)	IL 9.5 OR IL12.5	IL 9.5 OR 12.5	IL 19.0	IL 9.5 OR 12.5	IL 19.0	IL 9.5 OR IL12.5
FRICTION AGGREGATE:	MIXTURE D	MIXTURE D	N.A.	MIXTURE C	N.A.	MIXTURE C

** IF THE RAP OPTION IS SELECTED, THE ASPHALT CEMENT GRADE MAY NEED TO BE ADJUSTED; THIS WILL BE DETERMINED BY THE ENGINEER.

GENERAL NOTES (CONTINUED)

AGGREGATE FOR DRIVEWAY PLACEMENT

THE MATERIAL USED FOR CONSTRUCTION OF PERMANENT AGGREGATE DRIVEWAYS SHALL BE GRAVEL OR CRUSHED STONE, AS DIRECTED BY THE ENGINEER, TO REPLACE IN KIND THE EXISTING AGGREGATE DRIVEWAYS.

NO ADDITIONAL COMPENSATION SHALL BE PROVIDED FOR THIS REQUIREMENT BUT SHALL BE CONSIDERED AS INCLUDED IN THE COST OF THE PAY ITEM FOR THE AGGREGATE AS SPECIFIED ON THE PLANS.

BUTT JOINT TIME CUTTING RESTRICTION

BUTT JOINTS SHALL NOT BE MILLED MORE THAN THREE (3) DAYS PRIOR TO PLACEMENT OF THE BITUMINOUS SURFACE COURSE.

PAVING SURFACE COURSE

CONTINUOUS PAVING OPERATIONS ON THE MAIN ROADWAY SHALL BE MAINTAINED AT ALL TIMES DURING THE CONSTRUCTION OF THE HOT-MIX ASPHALT SURFACE. NO INTERRUPTIONS FOR SIDE ROADS, ENTRANCES, TURN LANES, ETC. WILL BE ALLOWED.

ENGINEER'S FIELD OFFICE

ADD THE FOLLOWING SENTENCE TO THE END OF PARAGRAPH 670.02 (i) AND 670.04 (e):

ALL OF THE TELEPHONE LINES PROVIDED SHALL HAVE UNPUBLISHED NUMBERS.

JOB SPECIFIC NOTES

PAVEMENT MARKINGS - "NO PASSING ZONE"

PRIOR TO PLACING CENTERLINE STRIPING, CONTACT THE DISTRICT BUREAU OF OPERATIONS FOR A "NO PASSING ZONE" EVALUATION.

CROSSING EXISTING STRUCTURES WITH EQUIPMENT

PRIOR TO BEGINNING WORK THE RESIDENT ENGINEER MUST VERIFY WHETHER THE FOLLOWING STRUCTURES MAY BE CROSSED WITH A LOADED MTD:

S.N. 072-0162, S.N. 072-2007, S.N. 072-0042, S.N. 072-0043, S.N. 072-0164, S.N. 072-0165, S.N. 072-0047, AND S.N. 072-0166.

AGGREGATE SHOULDER REMOVAL

ALL EARTH EXCAVATION REQUIRED FOR THE CONSTRUCTION OF THE HMA SHOULDER WILL NOT BE PAID FOR SEPARATELY, BUT SHALL BE INCLUDED IN THE COST PER CUBIC YARD FOR AGGREGATE SHOULDER REMOVAL.

SUMMARY OF QUANTITIES

CODE NO.	PAY ITEM	UNIT	TOTAL QUANTITY	ROADWAY 1000 100% STATE
40200800	AGGREGATE SURFACE COURSE, TYPE B	TON	369	369
40600215	POLYMERIZED BITUMINOUS MATERIALS (PRIME COAT)	TON	91	91
40600895	CONSTRUCTING TEST STRIP	EACH	1	1
40600982	HOT-MIX ASPHALT SURFACE REMOVAL - BUTT JOINT	SQ YD	2,595	2,595
40600990	TEMPORARY RAMP	SQ YD	675	675
40603335	HOT-MIX ASPHALT SURFACE COURSE, MIX "D", N50	TON	14,584	14,584
40603535	POLYMERIZED HOT-MIX ASPHALT SURFACE COURSE, MIX "D", N50	TON	1,744	1,744
40800050	INCIDENTAL HOT-MIX ASPHALT SURFACING	TON	2,222	2,222
44000155	HOT-MIX ASPHALT SURFACE REMOVAL, 1 1/2"	SQ YD	218,244	218,244
44201827	CLASS D PATCHES, TYPE II, 15 INCH	SQ YD	2,619	2,619
44201831	CLASS D PATCHES, TYPE III, 15 INCH	SQ YD	20	20
44201833	CLASS D PATCHES, TYPE IV, 15 INCH	SQ YD	380	380
48101200	AGGREGATE SHOULDERS, TYPE B	TON	15,817	15,817
48203029	HOT-MIX ASPHALT SHOULDERS, 8"	SQ YD	5,078	5,078
* 63100167	TRAFFIC BARRIER TERMINAL, TYPE 1 (SPECIAL) TANGENT	EACH	22	22
63304385	TRAFFIC BARRIER TERMINAL REMOVAL, TYPE 1	EACH	22	22
64200105	SHOULDER RUMBLE STRIPS	FOOT	11,425	11,425
67000400	ENGINEER'S FIELD OFFICE, TYPE A	CAL MO	6	6
67100100	MOBILIZATION	L SUM	1	1
70100450	TRAFFIC CONTROL AND PROTECTION, STANDARD 701201	L SUM	1	1
70100460	TRAFFIC CONTROL AND PROTECTION, STANDARD 701306	L SUM	1	1

* SPECIALTY ITEM

FILE NAME =
68961 - Phase II.dgn

USER NAME = johnsontv
DRAWN -
PLOT SCALE = 100.0000 / IN.
PLOT DATE = 3/18/2010

DESIGNED -
CHECKED -
DATE -

REVISED -
REVISED -
REVISED -

**STATE OF ILLINOIS
DEPARTMENT OF TRANSPORTATION**

SUMMARY OF QUANTITIES

SCALE: SHEET NO. 1 OF 2 SHEETS STA. TO STA.

F.A.S. RTE. 1388	SECTION Z-00-15D)RS-741V.E.2,4)RS-43	COUNTY PEORIA	TOTAL SHEETS 32	SHEET NO. 3
CONTRACT NO. 68961			ILLINOIS FED. AID PROJECT	

SUMMARY OF QUANTITIES

CODE NO.	PAY ITEM	UNIT	TOTAL QUANTITY	ROADWAY 1000 100% STATE
70100500	TRAFFIC CONTROL AND PROTECTION, STANDARD 701326	L SUM	1	1
70100600	TRAFFIC CONTROL AND PROTECTION, STANDARD 701336	L SUM	1	1
70103815	TRAFFIC CONTROL SURVEILLANCE	CAL DA	15	15
70300100	SHORT-TERM PAVEMENT MARKING	FOOT	19,459	19,459
70300220	TEMPORARY PAVEMENT MARKING - LINE 4"	FOOT	210,818	210,818
70300250	TEMPORARY PAVEMENT MARKING - LINE 8"	FOOT	480	480
70300280	TEMPORARY PAVEMENT MARKING - LINE 24"	FOOT	80	80
70301000	WORK ZONE PAVEMENT MARKING REMOVAL	SQ FT	2,162	2,162
* 78005110	EPOXY PAVEMENT MARKING - LINE 4"	FOOT	210,818	210,818
* 78005140	EPOXY PAVEMENT MARKING - LINE 8"	FOOT	480	480
* 78005180	EPOXY PAVEMENT MARKING - LINE 24"	FOOT	80	80
* 78100100	RAISED REFLECTIVE PAVEMENT MARKER	EACH	813	813
* 78201000	TERMINAL MARKER - DIRECT APPLIED	EACH	22	22
78300200	RAISED REFLECTIVE PAVEMENT MARKER REMOVAL	EACH	796	796
X0301512	GUARDRAIL AGGREGATE EROSION CONTROL	TON	111	111
X0322729	MATERIAL TRANSFER DEVICE	TON	16,328	16,328
X2503100	MOWING	UNIT	1,275	1,275
X7015005	CHANGEABLE MESSAGE SIGN	CAL DA	21	21
X4810200	AGGREGATE SHOULDER REMOVAL	CU YD	1,128	1,128
XZ013798	CONSTRUCTION STATION LAYOUT	L SUM	1	1
Z0055500	RUMBLE STRIP	SQ FT	900	900

* SPECIALTY ITEM

FILE NAME = 68961 - Phase II.dgn

USER NAME = johnsonv

DESIGNED -

REVISED -

DRAWN -

REVISED -

PLOT SCALE = 100,0000' / IN.

CHECKED -

REVISED -

PLOT DATE = 3/18/2010

DATE -

REVISED -

**STATE OF ILLINOIS
DEPARTMENT OF TRANSPORTATION**

SUMMARY OF QUANTITIES

SCALE:

SHEET NO. 2 OF 2 SHEETS

STA.

TO STA.

F.A.S.
RTE.

SECTION

COUNTY

TOTAL SHEETS

SHEET NO.

1388

Z-10-15DIRS-7(1)V,E,2,4RS-43

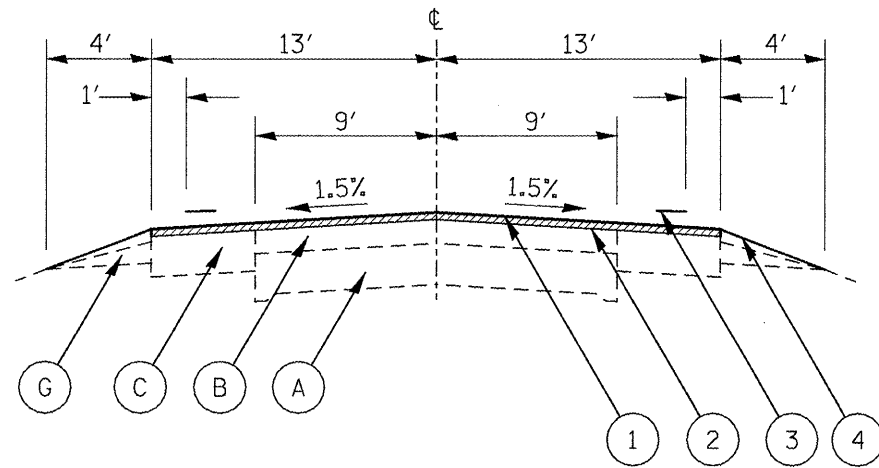
PEORIA

32

4

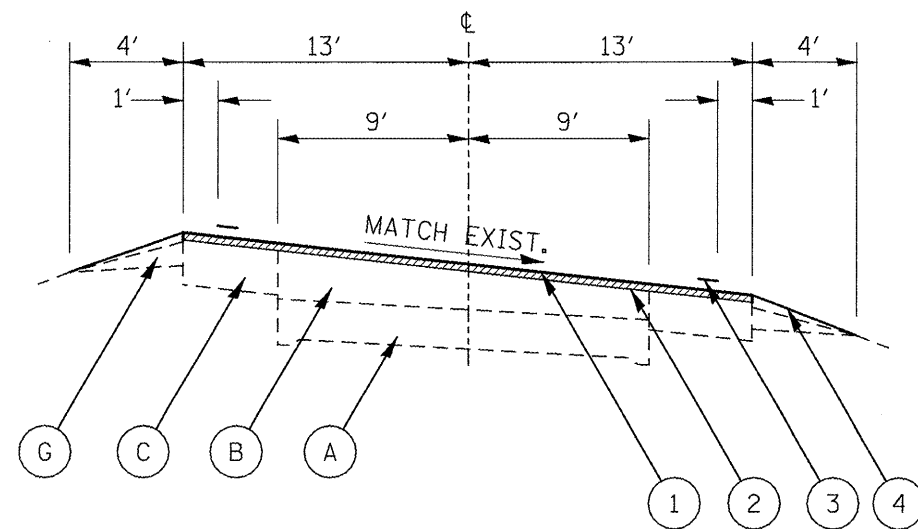
CONTRACT NO. 68961

ILLINOIS FED. AID PROJECT



IL 8-TYPICAL SECTION 1

NOTE: SEE SHEET 11 FOR LOCATIONS OF PROPOSED HMA SHOULDER, 8"



IL 8-TYPICAL SECTION 2

NOTES: 1. SEE SHEET 11 FOR LOCATIONS OF PROPOSED HMA SHOULDER, 8"

2. SEE TABULATION OF RESURFACING QUANTITIES ON SHEETS 12-14 FOR LOCATIONS EACH TYPICAL SECTION IS APPLICABLE TO.

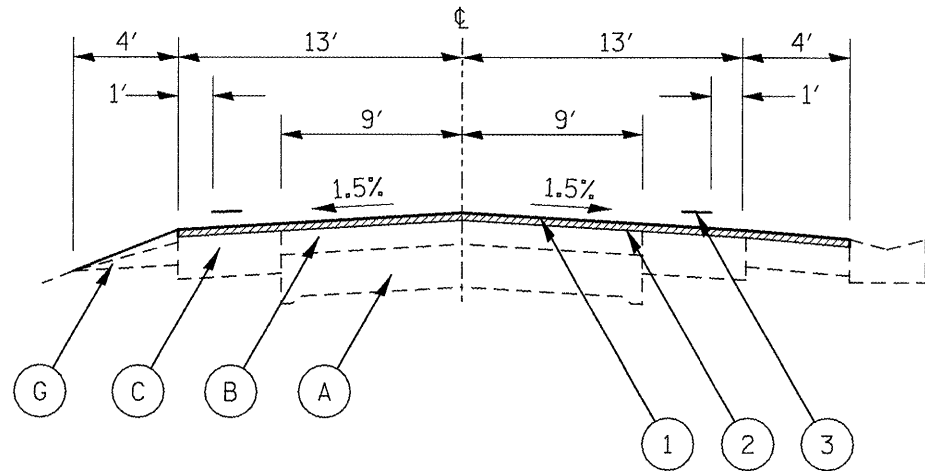
LEGEND - PROPOSED

- ① HMA SURFACE REMOVAL, 1 1/2"
- ② POLYMERIZED HMA SURFACE CSE, 1 1/2"
OR HMA SURFACE CSE, 1 1/2"
(SEE SCHEDULES ON SHEETS 12-14 FOR LOCATIONS)
- ③ EPOXY PAVEMENT MARKING
- ④ AGGREGATE SHOULDERS, TYPE B

LEGEND - EXISTING

- Ⓐ PCC PAVEMENT (9-6-9)
- Ⓑ HMA OVERLAY, 7 1/2" AND VAR.
- Ⓒ HMA BASE CSE., 9"
- Ⓓ FULL-DEPTH HMA PVMT, 13"
- Ⓔ HMA SHOULDER, 6" TO 8"
- Ⓕ CONCRETE GUTTER, TYPE A (MODIFIED)
- Ⓖ AGGREGATE SHOULDER
- Ⓗ PIPE UNDERDRAINS, 4"
- Ⓘ SUB-BASE GRAN. MATERIAL, 12"

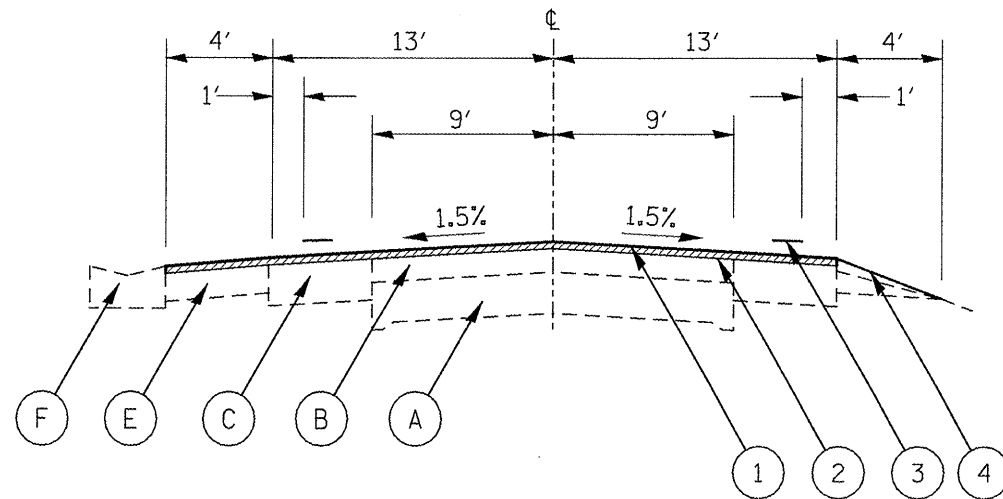
FILE NAME = 68961 - Phase II.dgn	USER NAME = johnsonv	DESIGNED -	REVISED -	STATE OF ILLINOIS DEPARTMENT OF TRANSPORTATION	TYPICAL SECTIONS		F.A.S. RTE.	SECTION	COUNTY	TOTAL SHEETS	SHEET NO.
	PLOT SCALE = 100.0000' / IN.	CHECKED -	REVISED -				1388	Z-(10-15)RS-7s(1V,E,2,4)RS-4J	PEORIA	32	5
	PLOT DATE = 3/18/2010	DATE -	REVISED -				CONTRACT NO. 68961				
					NOT TO SCALE	SHEET NO. 1 OF 7 SHEETS	STA.	TO STA.			
ILLINOIS FED. AID PROJECT											



IL 8-TYPICAL SECTION 5

LEGEND - PROPOSED

- ① HMA SURFACE REMOVAL, 1 1/2"
- ② POLYMERIZED HMA SURFACE CSE, 1 1/2"
OR HMA SURFACE CSE, 1 1/2"
(SEE SCHEDULES ON SHEETS 12-14 FOR LOCATIONS)
- ③ EPOXY PAVEMENT MARKING
- ④ AGGREGATE SHOULDERS, TYPE B



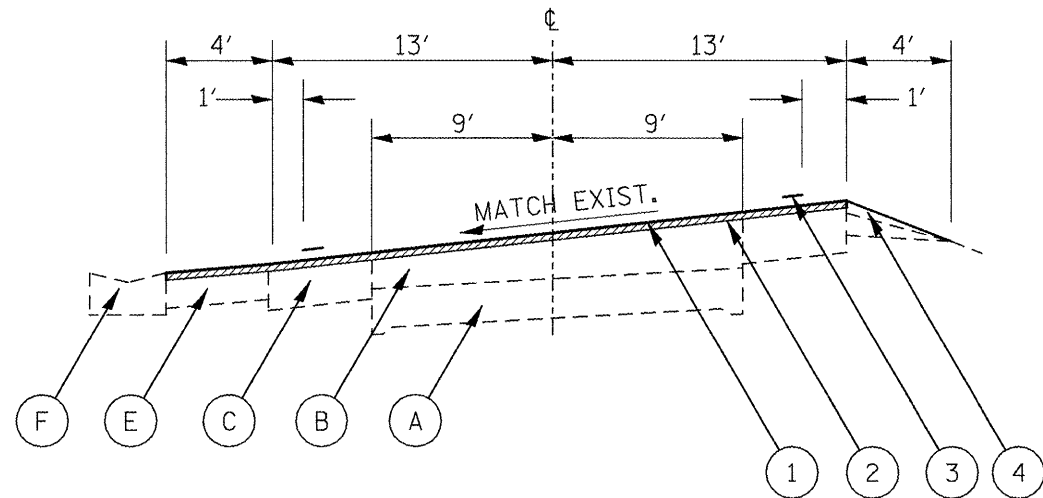
IL 8-TYPICAL SECTION 6

LEGEND - EXISTING

- Ⓐ PCC PAVEMENT (9-6-9)
- Ⓑ HMA OVERLAY, 7 1/2" AND VAR.
- Ⓒ HMA BASE CSE., 9"
- Ⓓ FULL-DEPTH HMA PVMT, 13"
- Ⓔ HMA SHOULDER, 6" TO 8"
- Ⓕ CONCRETE GUTTER, TYPE A (MODIFIED)
- Ⓖ AGGREGATE SHOULDER
- Ⓗ PIPE UNDERDRAINS, 4"
- Ⓘ SUB-BASE GRAN. MATERIAL, 12"

NOTE: SEE TABULATION OF RESURFACING QUANTITIES ON SHEETS 12-14 FOR LOCATIONS EACH TYPICAL SECTION IS APPLICABLE TO.

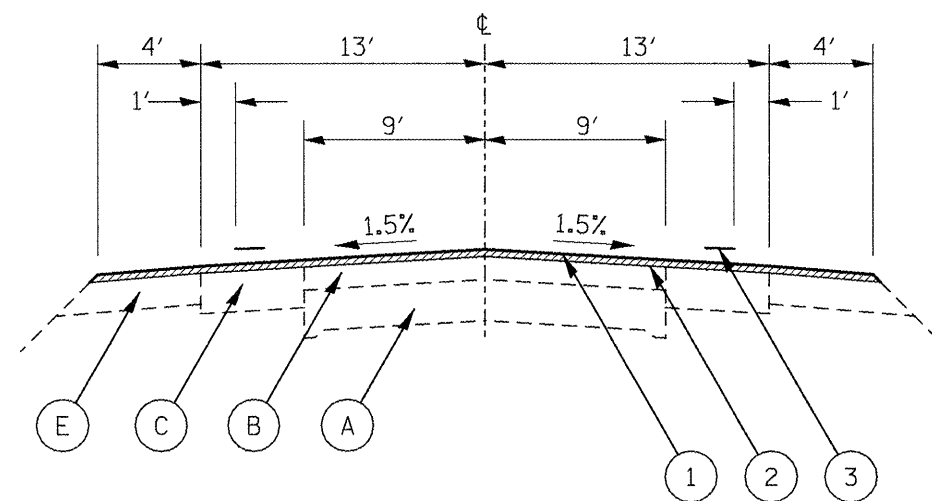
FILE NAME = 68961 - Phase II.dgn	USER NAME = johnsonv	DESIGNED -	REVISED -	STATE OF ILLINOIS DEPARTMENT OF TRANSPORTATION	TYPICAL SECTIONS			F.A.S. RTE.	SECTION	COUNTY	TOTAL SHEETS	SHEET NO.
	PLOT SCALE = 100.0000' / IN.	CHECKED -	REVISED -					1388	Z-10-15DIRS-7(1V,E,2,4)RS-43	PEORIA	32	7
PLOT DATE = 3/18/2010	DATE -	REVISED -	REVISED -	NOT TO SCALE	SHEET NO. 3 OF 7 SHEETS	STA.	TO STA.	ILLINOIS FED. AID PROJECT CONTRACT NO. 68961				



IL 8-TYPICAL SECTION 7

LEGEND - PROPOSED

- ① HMA SURFACE REMOVAL, 1 1/2"
- ② POLYMERIZED HMA SURFACE CSE, 1 1/2"
OR HMA SURFACE CSE, 1 1/2"
(SEE SCHEDULES ON SHEETS 12-14 FOR LOCATIONS)
- ③ EPOXY PAVEMENT MARKING
- ④ AGGREGATE SHOULDERS, TYPE B



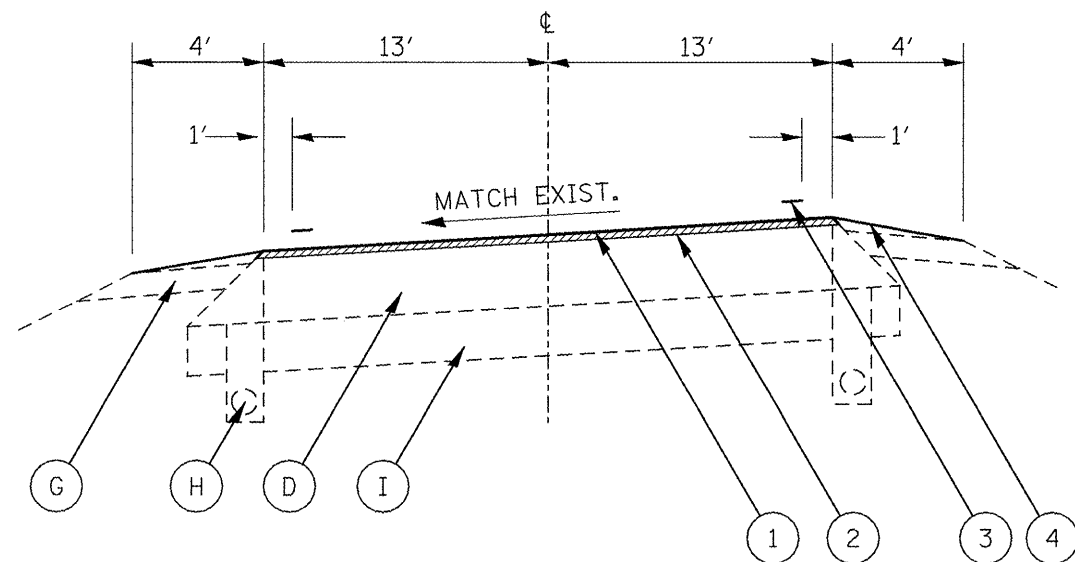
IL 8-TYPICAL SECTION 8

LEGEND - EXISTING

- Ⓐ PCC PAVEMENT (9-6-9)
- Ⓑ HMA OVERLAY, 7 1/2" AND VAR.
- Ⓒ HMA BASE CSE., 9"
- Ⓓ FULL-DEPTH HMA PVMT, 13"
- Ⓔ HMA SHOULDER, 6" TO 8"
- Ⓕ CONCRETE GUTTER, TYPE A (MODIFIED)
- Ⓖ AGGREGATE SHOULDER
- Ⓗ PIPE UNDERDRAINS, 4"
- Ⓘ SUB-BASE GRAN. MATERIAL, 12"

NOTE: SEE TABULATION OF RESURFACING QUANTITIES ON SHEETS 12-14 FOR LOCATIONS EACH TYPICAL SECTION IS APPLICABLE TO.

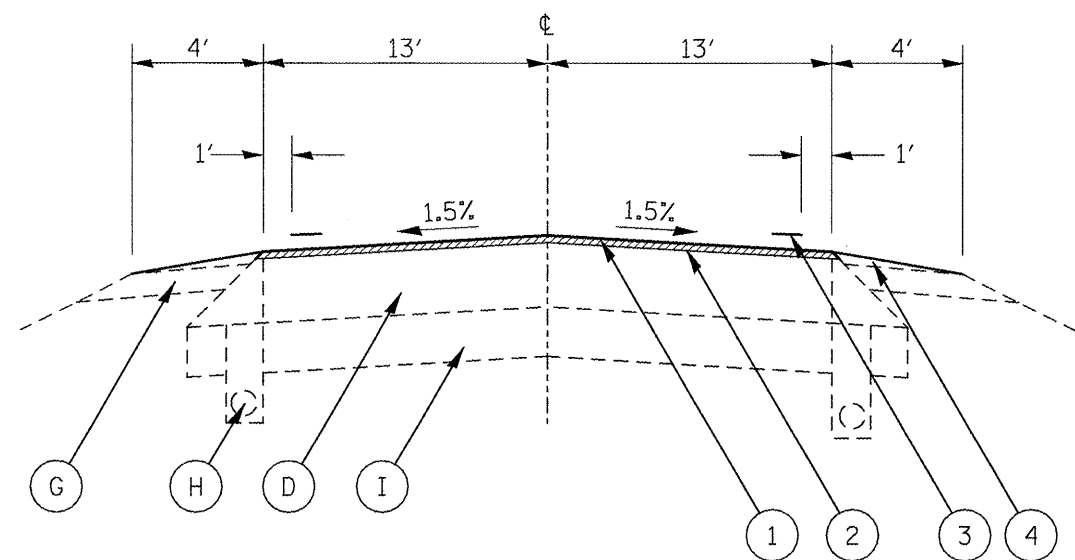
FILE NAME = 68961 - Phase II.dgn	USER NAME = johnsontv	DESIGNED -	REVISED -	STATE OF ILLINOIS DEPARTMENT OF TRANSPORTATION	TYPICAL SECTIONS			F.A.S. RTE.	SECTION	COUNTY	TOTAL SHEETS	SHEET NO.
	PLOT SCALE = 100.0000' / IN.	DRAWN -	REVISED -					1388	Z-[D-15D]RS-74(1V,E,2,4)RS-43	PEORIA	32	8
PLOT DATE = 3/18/2018	CHECKED -	REVISED -	REVISED -		NOT TO SCALE	SHEET NO. 4 OF 7 SHEETS	STA.	TO STA.	CONTRACT NO. 68961			
	DATE -	REVISED -	REVISED -		ILLINOIS FED. AID PROJECT							



IL 8-TYPICAL SECTION 9

LEGEND - PROPOSED

- ① HMA SURFACE REMOVAL, 1 1/2"
- ② POLYMERIZED HMA SURFACE CSE, 1 1/2"
OR HMA SURFACE CSE, 1 1/2"
(SEE SCHEDULES ON SHEETS 12-14 FOR LOCATIONS)
- ③ EPOXY PAVEMENT MARKING
- ④ AGGREGATE SHOULDERS, TYPE B



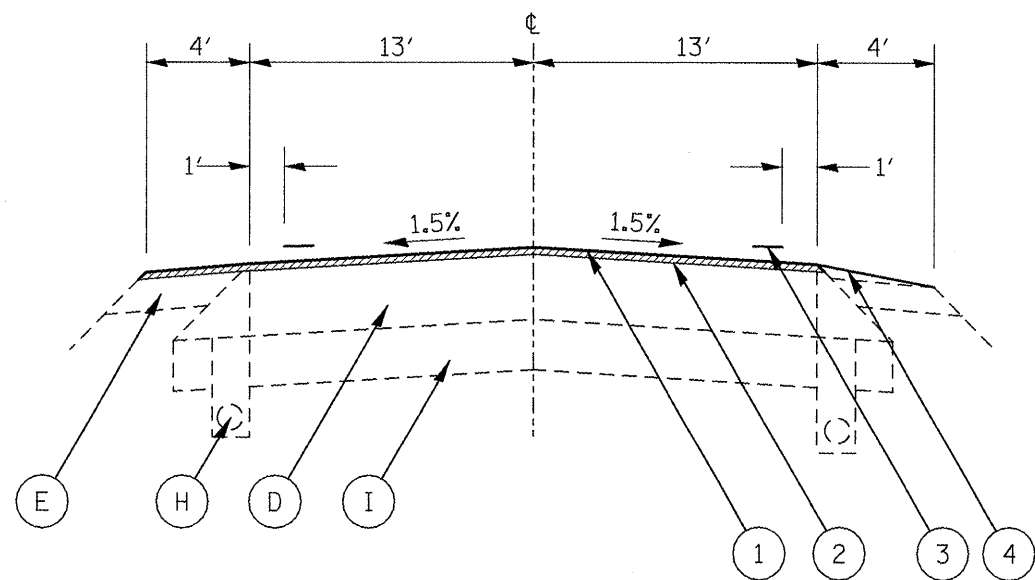
IL 8-TYPICAL SECTION 10

LEGEND - EXISTING

- Ⓐ PCC PAVEMENT (9-6-9)
- Ⓑ HMA OVERLAY, 7 1/2" AND VAR.
- Ⓒ HMA BASE CSE., 9"
- Ⓓ FULL-DEPTH HMA PVMT, 13"
- Ⓔ HMA SHOULDER, 6" TO 8"
- Ⓕ CONCRETE GUTTER, TYPE A (MODIFIED)
- Ⓖ AGGREGATE SHOULDER
- Ⓗ PIPE UNDERDRAINS, 4"
- Ⓘ SUB-BASE GRAN. MATERIAL, 12"

NOTE: SEE TABULATION OF RESURFACING QUANTITIES ON SHEETS 12-14 FOR LOCATIONS EACH TYPICAL SECTION IS APPLICABLE TO.

FILE NAME = 68961 - Phase 11.dgn	USER NAME = johnsonv	DESIGNED -	REVISED -	STATE OF ILLINOIS DEPARTMENT OF TRANSPORTATION	TYPICAL SECTIONS			F.A.S. RTE.	SECTION	COUNTY	TOTAL SHEETS	SHEET NO.
	PLOT SCALE = 1/8" = 1' / IN.	DRAWN -	REVISED -					1388	Z-CID-15DIRS-7(IV,E,2,4)RS-43	PEORIA	32	9
PLOT DATE = 3/18/2010	CHECKED -	DATE -	REVISED -	NOT TO SCALE	SHEET NO. 5 OF 7 SHEETS	STA.	TO STA.	CONTRACT NO. 68961 ILLINOIS FED. AID PROJECT				

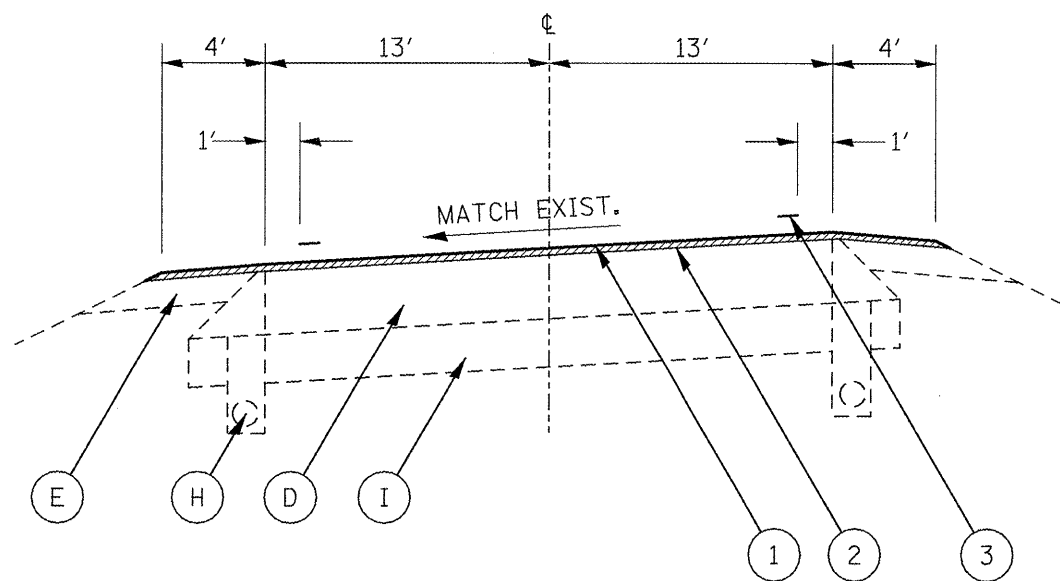


IL 8-TYPICAL SECTION 11

NOTE: SEE SHEET 11 FOR LOCATIONS OF PROPOSED HMA SHOULDER, 8"

LEGEND - PROPOSED

- ① HMA SURFACE REMOVAL, 1 1/2"
- ② POLYMERIZED HMA SURFACE CSE, 1 1/2"
OR HMA SURFACE CSE, 1 1/2"
(SEE SCHEDULES ON SHEETS 12-14 FOR LOCATIONS)
- ③ EPOXY PAVEMENT MARKING
- ④ AGGREGATE SHOULDERS, TYPE B



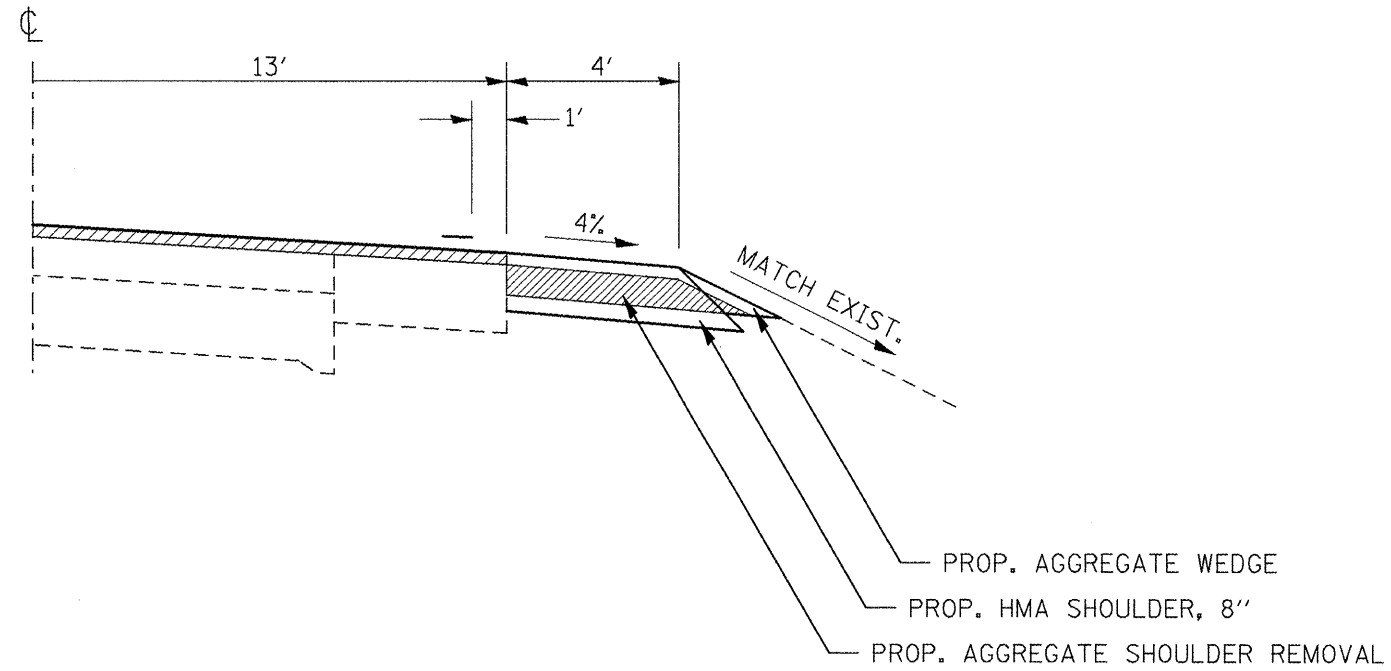
IL 8-TYPICAL SECTION 12

NOTE: SEE TABULATION OF RESURFACING QUANTITIES ON SHEETS 12-14 FOR LOCATIONS EACH TYPICAL SECTION IS APPLICABLE TO.

LEGEND - EXISTING

- Ⓐ PCC PAVEMENT (9-6-9)
- Ⓑ HMA OVERLAY, 7 1/2" AND VAR.
- Ⓒ HMA BASE CSE., 9"
- Ⓓ FULL-DEPTH HMA PVMT, 13"
- Ⓔ HMA SHOULDER, 6" TO 8"
- Ⓕ CONCRETE GUTTER, TYPE A (MODIFIED)
- Ⓖ AGGREGATE SHOULDER
- Ⓗ PIPE UNDERDRAINS, 4"
- Ⓘ SUB-BASE GRAN. MATERIAL, 12"

FILE NAME = 68961 - Phase 11.dgn	USER NAME = johnsontv	DESIGNED -	REVISED -	STATE OF ILLINOIS DEPARTMENT OF TRANSPORTATION	TYPICAL SECTIONS		F.A.S. RTE.	SECTION	COUNTY	TOTAL SHEETS	SHEET NO.
	PLOT SCALE = 100.0000' / IN.	CHECKED -	REVISED -				1388	Z-(10-15)RS-7(1V,E,2,4)RS-43	PEORIA	32	10
	PLOT DATE = 3/18/2010	DATE -	REVISED -				CONTRACT NO. 68961				
				NOT TO SCALE	SHEET NO. 6 OF 7 SHEETS	STA.	TO STA.		ILLINOIS FED. AID PROJECT		



PROPOSED HMA SHOULDER

- RT./LT. STA. 352+50 TO STA. 356+51
- RT. STA. 429+79 TO STA. 439+38
- LT. STA. 429+79 TO STA. 437+41
- RT./LT. STA. 537+00 TO STA. 545+00
- RT./LT. STA. 563+83 TO STA. 567+67
- LT. STA. 568+35 TO STA. 572+16
- RT. STA. 569+00 TO STA. 572+16
- LT./RT. STA. 690+00 TO STA. 695+20
- LT. STA. 695+20 TO STA. 702+05
- LT./RT. STA. 702+05 TO STA. 708+31
- RT./LT. STA. 718+00 TO STA. 732+30

FILE NAME = 68961 - Phase II.dgn	USER NAME = johnsontv	DESIGNED -	REVISED -	STATE OF ILLINOIS DEPARTMENT OF TRANSPORTATION	TYPICAL SECTIONS			F.A.S. RTE.	SECTION	COUNTY	TOTAL SHEETS	SHEET NO.
	PLOT SCALE = 100.0000' / IN.	DRAWN -	REVISED -					1388	Z-[D-15D]RS-7;[1V,E,2,4]RS-43	PEORIA	32	11
	PLOT DATE = 3/18/2010	CHECKED -	REVISED -					CONTRACT NO. 68961				
	DATE -	REVISED -		NOT TO SCALE	SHEET NO. 7 OF 7 SHEETS	STA.	TO STA.	ILLINOIS FED. AID PROJECT				

TABULATION OF RESURFACING QUANTITIES

LOCATION	TYPICAL SECTION	ROADWAY WIDTH	HMA SHOULDER WIDTH (EXIST. & PROP.)		AGGREGATE SHOULDER WIDTH		HMA SURFACE REMOVAL - BUTT JOINT	TEMPORARY RAMP	HMA SURFACE REMOVAL, 1 1/2 IN	POLYMERIZED BITUMINOUS MATERIALS (PRIME COAT)	POLYMERIZED HMA SURFACE COURSE, MIX "D", N50	HMA SURFACE COURSE, MIX "D", N50	HMA SHOULDER, 8 IN	AGGREGATE SHOULDERS TYPE B	AGGREGATE SHOULDER REMOVAL	SHOULDER RUMBLE STRIP		
			LT	RT	LT	RT												
			FT	FT	FT	FT											SQ YD	SQ YD
STA. 176+49.74 TO STA. 176+79.74	BUTT JOINT	26			4	4	86.67	14.44		0.03		7.28		9.12				
STA. 176+79.74 TO STA. 193+47.60	1	26			4	4			4,818.26	1.93		404.73		507.03				
STA. 193+47.60 TO STA. 193+77.60	BUTT JOINT	26	7	7	4	4	133.33	22.22		0.05		11.20		9.12				
STA. 193+77.60 TO STA. 195+56.40									WALNUT CREEK S.N. 072-0162									
STA. 195+56.40 TO STA. 195+86.40	BUTT JOINT	26	7	7	4	4	133.33	22.22		0.05		11.20		9.12				
STA. 195+86.40 TO STA. 197+58.00	1	26			4	4			495.73	0.20		41.64		52.17				
STA. 197+58.00 TO STA. 209+00.00	5	26		4	4				3,806.67	1.52		319.76		173.58				
STA. 209+00.00 TO STA. 277+62.00	1	26			4	4			19,823.56	7.93		1665.18		2086.05				
STA. 277+62.00 TO STA. 281+06.00	6	26	4		4				1,146.67	0.46		96.32		52.29				
STA. 281+06.00 TO STA. 285+84.00	5	26		4	4				1,593.33	0.64		133.84		72.66				
STA. 285+84.00 TO STA. 295+46.00	1	26			4	4			2,779.11	1.11		233.45		292.45				
STA. 295+46.00 TO STA. 306+65.00	3	26	4	4					4,227.33	1.69		355.10		85.04				
STA. 306+65.00 TO STA. 308+36.00	5	26		4	4				570.00	0.23		47.88		25.99				
STA. 308+36.00 TO STA. 320+71.00	1	26			4	4			3,567.78	1.43		299.69		375.44				
STA. 320+71.00 TO STA. 325+96.00	6	26	4		4				1,750.00	0.70		147.00		79.80				
STA. 325+96.00 TO STA. 333+37.00	1	26			4	4			2,140.67	0.86		179.82		225.26				
STA. 333+37.00 TO STA. 337+00.00	5	26		4	4				1,210.00	0.48		101.64		55.18				
STA. 337+00.00 TO STA. 338+24.00	1	26			4	4			358.22	0.14		30.09		37.70				
STA. 338+24.00 TO STA. 342+41.00	3	26	4	4					1,575.33	0.63		132.33		31.69				
STA. 342+41.00 TO STA. 342+88.00	5	26		4	4				156.67	0.06		13.16		7.14				
STA. 342+88.00 TO STA. 344+02.00	1	26			4	4			329.33	0.13		27.66		34.66				
STA. 344+02.00 TO STA. 352+50.00	2	26			4	4			2,449.78	0.98		205.78		257.79				
STA. 352+50.00 TO STA. 355+64.00	1	26	4	4					907.11	0.47		76.20	279.11	23.86	62.02	628.00		
STA. 355+64.00 TO STA. 356+51.00	1	26	4	4					251.33	0.13		21.11	77.33	6.61	17.19	174.00		
STA. 356+51.00 TO STA. 361+10.00	5	26		4	4				1,530.00	0.61		128.52		69.77				
STA. 361+10.00 TO STA. 428+20.00	1	26			4	4			19,384.44	7.75		1628.29		2039.84				
STA. 428+20.00 TO STA. 429+79.00	2	26			4	4			459.33	0.18		38.58		48.34				
STA. 429+79.00 TO STA. 437+41.00	1	26	4	4					2,201.33	1.15		184.91	677.33	57.91	150.52	1524.00		
STA. 437+41.00 TO STA. 439+38.00	1	26		4					569.11	0.26		47.81	87.56	14.97	19.46	197.00		
STA. 439+38.00 TO STA. 439+51.00	5	26		4	4				43.33	0.02		3.64		1.98				
STA. 439+51.00 TO STA. 451+04.00	3	26	4	4					4,355.78	1.74		365.89		87.63				
STA. 451+04.00 TO STA. 451+68.00	6	26	4			4			213.33	0.09		17.92		9.73				
STA. 451+68.00 TO STA. 453+13.00	5	26		4	4				483.33	0.19		40.60		22.04				
STA. 453+13.00 TO STA. 457+53.53	1	26			4	4			1,272.64	0.51		106.90		133.92				
STA. 457+53.53 TO STA. 457+83.53	BUTT JOINT	26	4	4	4	4	113.33	18.89		0.05		9.52		9.12				
STA. 457+83.53 TO STA. 458+79.86									BURLINGTON NORTHERN RAILROAD S.N. 072-0042									
STA. 458+79.86 TO STA. 459+09.86	BUTT JOINT	26	4	4	4	4	113.33	18.89		0.05		9.52		9.12				
STA. 459+09.86 TO STA. 479+34.70	1	26			4	4			5,849.54	2.34		491.36		615.55				
STA. 479+34.70 TO STA. 479+64.70	BUTT JOINT	26	4	4	4	4	113.33	18.89		0.05		9.52		9.12				
STA. 479+64.70 TO STA. 480+95.38									WEST BRANCH KICKAPOO CREEK S.N. 072-0043									
STA. 480+95.38 TO STA. 481+25.38	BUTT JOINT	26	4	4	4	4	113.33	18.89		0.05		9.52		9.12				
STA. 481+25.38 TO STA. 484+64.00	1	26			4	4			978.24	0.39		82.17		102.94				
STA. 484+64.00 TO STA. 488+69.00	6	26	4		4				1,350.00	0.54		113.40		61.56				

FILE NAME = 68961 - Phase II.dgn

USER NAME = johnsantv	DESIGNED -	REVISED -
DRAWN -	REVISION -	
PLOT SCALE = 1/8" = 100.0000' / IN.	CHECKED -	REVISED -
PLOT DATE = 3/18/2010	DATE -	REVISED -

**STATE OF ILLINOIS
DEPARTMENT OF TRANSPORTATION**

SCHEDULES OF QUANTITIES

SCALE: SHEET NO. 1 OF 6 SHEETS STA. TO STA.

F.A.S. RTE. 1388	SECTION Z-CD-15DIRS-7(I,V,E,2,4)RS-43	COUNTY PEORIA	TOTAL SHEETS 32	SHEET NO. 12
CONTRACT NO. 68961			ILLINOIS FED. AID PROJECT	

TABULATION OF RESURFACING QUANTITIES

LOCATION	TYPICAL SECTION	ROADWAY WIDTH	HMA SHOULDER WIDTH (EXIST. & PROP.)		AGGREGATE SHOULDER WIDTH		HMA SURFACE REMOVAL - BUTT JOINT	TEMPORARY RAMP	HMA SURFACE REMOVAL, 1 1/2 IN	POLYMERIZED BITUMINOUS MATERIALS (PRIME COAT)	POLYMERIZED HMA SURFACE COURSE, MIX "D", N50	HMA SURFACE COURSE, MIX "D", N50	HMA SHOULDER, 8 IN	AGGREGATE SHOULDERS TYPE B	AGGREGATE SHOULDER REMOVAL	SHOULDER RUMBLE STRIP			
			LT	RT	LT	RT													
			FT	FT	FT	FT											SQ YD	SQ YD	SQ YD
STA. 488+69.00 TO STA. 509+37.00	1	26			4	4			5,974.22	2.39		501.83		628.67					
STA. 509+37.00 TO STA. 514+00.00	6	26	4			4			1,543.33	0.62		129.64		70.38					
STA. 514+00.00 TO STA. 535+32.00	1	26			4	4			6,159.11	2.46		517.37		648.13					
STA. 535+32.00 TO STA. 537+00.00	2	26			4	4			485.33	0.19		40.77		51.07					
STA. 537+00.00 TO STA. 544+59.00	2	26	4	4					2,192.67	1.15		184.18	674.67	57.68	149.93	1518.00			
STA. 544+59.00 TO STA. 545+00.00	1	26	4	4					118.44	0.06		9.95	36.44	3.12	8.10	82.00			
STA. 545+00.00 TO STA. 562+32.00	1	26			4	4			5,003.56	2.00		420.30		526.53					
STA. 562+32.00 TO STA. 563+83.00	2	26			4	4			436.22	0.17		36.64		45.90					
STA. 563+83.00 TO STA. 567+67.00	2	26	4	4					1,109.33	0.58		93.18	341.33	29.18	75.85	768.00			
STA. 567+67.00 TO STA. 568+35.00	2	26			4	4			196.44	0.08		16.50		20.67					
STA. 568+35.00 TO STA. 569+00.00	2	26	4						187.78	0.09		15.77	28.89	4.94	6.42	65.00			
STA. 569+00.00 TO STA. 572+16.00	2	26	4	4					912.89	0.48		76.68	280.89	24.02	62.42	632.00			
STA. 572+16.00 TO STA. 573+37.00	3	26	4	4					457.11	0.18		38.40		9.20					
STA. 573+37.00 TO STA. 576+48.00	3	26	4	4					1,174.89	0.47		98.69		23.64					
STA. 576+48.00 TO STA. 576+98.00	6	26	4			4			166.67	0.07		14.00		7.60					
STA. 576+98.00 TO STA. 578+87.00	1	26			4	4			546.00	0.22		45.86		57.46					
STA. 578+87.00 TO STA. 579+49.00	6	26	4			4			206.67	0.08		17.36		9.42					
STA. 579+49.00 TO STA. 586+66.00	3	26	4	4					2,708.67	1.08		227.53		54.49					
STA. 586+66.00 TO STA. 587+36.00	6	26	4			4			233.33	0.09		19.60		10.64					
STA. 587+36.00 TO STA. 589+90.00	1	26			4	4			733.78	0.29		61.64		77.22					
STA. 589+90.00 TO STA. 590+30.00	8	26		4					133.33	0.05		11.20		3.04					
STA. 590+30.00 TO STA. 592+34.00	5	26		4	4				680.00	0.27		57.12		31.01					
STA. 592+34.00 TO STA. 593+53.00	8	26		4	4				396.67	0.16		33.32		18.09					
STA. 593+53.00 TO STA. 594+52.91	8	26	4	4					377.44	0.15		31.70		7.59					
STA. 594+52.91 TO STA. 594+82.91	BUTT JOINT	26	7	7	4	4	133.33	22.22		0.05		11.20		9.12					
STA. 594+82.91 TO STA. 596+66.12									NIXON RUN CREEK S.N. 072-0164										
STA. 596+66.12 TO STA. 596+96.12	BUTT JOINT	26	7	7	4	4	133.33	22.22		0.05		11.20		9.12					
STA. 596+96.12 TO STA. 601+85.00	5	26		4	4				1,629.60	0.65		136.89		74.31					
STA. 601+85.00 TO STA. 612+95.00	3	26	4	4					4,193.33	1.68		352.24		84.36					
STA. 612+95.00 TO STA. 613+11.00	5	26		4	4				53.33	0.02		4.48		2.43					
STA. 613+11.00 TO STA. 656+62.00	1	26			4	4			12,569.56	5.03		1055.84		1322.70					
STA. 656+62.00 TO STA. 659+10.00	3	26	4	4					936.89	0.37		78.70		18.85					
STA. 659+10.00 TO STA. 664+77.00	5	26		4	4				1,890.00	0.76		158.76		86.18					
STA. 664+77.00 TO STA. 669+59.00	1	26			4	4			1,392.44	0.56		116.97		146.53					
STA. 669+59.00 TO STA. 672+86.00	2	26			4	4			944.67	0.38		79.35		99.41					
STA. 672+86.00 TO STA. 673+00.00	7	26	4			4			46.67	0.02		3.92		2.13					
STA. 673+00.00 TO STA. 677+23.00	4	26	4	4					1,598.00	0.64		134.23		32.15					
STA. 677+23.00 TO STA. 677+95.00	3	26	4	4					272.00	0.11		22.85		5.47					
STA. 677+95.00 TO STA. 683+69.00	6	26	4			4			1,913.33	0.77		160.72		87.25					
STA. 683+69.00 TO STA. 690+00.00	1	26			4	4			1,822.89	0.73		153.12		191.82					
STA. 690+00.00 TO STA. 691+73.00	1	26	4	4					499.78	0.26		41.98	153.78	13.15	34.17	346.00			
STA. 691+73.00 TO STA. 695+20.00	1	26	4	4					1,002.44	0.52		84.21	308.44	26.37	68.54	694.00			
STA. 695+20.00 TO STA. 702+05.00	11	26		4					1,978.89	0.91		166.23	304.44	52.06	67.65	685.00			

FILE NAME = 68961 - Phase II.dgn	USER NAME = johnsonv	DESIGNED -	REVISED -
		DRAWN -	REVISED -
	PLOT SCALE = 100.0000' / IN.	CHECKED -	REVISED -
	PLOT DATE = 3/18/2010	DATE -	REVISED -

**STATE OF ILLINOIS
DEPARTMENT OF TRANSPORTATION**

SCHEDULES OF QUANTITIES

SCALE: SHEET NO. 2 OF 6 SHEETS STA. TO STA.

F.A.S. RTE.	SECTION	COUNTY	TOTAL SHEETS	SHEET NO.
1388	Z-UD-15DIRS-741V.E.2.4RS-41	PEORIA	32	13
CONTRACT NO. 68961				
ILLINOIS FED. AID PROJECT				

TABULATION OF RESURFACING QUANTITIES

LOCATION	TYPICAL SECTION	ROADWAY WMDTH	HMA SHOULDER WMDTH (EXIST. & PROP.)		AGGREGATE SHOULDER WMDTH		HMA SURFACE REMOVAL - BUTT JOINT	TEMPORARY RAMP	HMA SURFACE REMOVAL, 1 1/2 IN	POLYMERIZED BITUMINOUS MATERIALS (PRIME COAT)	POLYMERIZED HMA SURFACE COURSE, MIX "D", N50	HMA SURFACE COURSE, MIX "D", N50	HMA SHOULDER, 8 IN	AGGREGATE SHOULDERS TYPE B	AGGREGATE SHOULDER REMOVAL	SHOULDER RUMBLE STRIP			
			LT	RT	LT	RT													
			FT	FT	FT	FT											SQ YD	SQ YD	SQ YD
STA. 702+05.00 TO STA. 706+07.00	2	26	4	4					1,161.33	0.61		97.55	357.33	30.55	79.41	804.00			
STA. 706+07.00 TO STA. 708+31.00	1	26	4	4					647.11	0.34		54.36	199.11	17.02	44.25	448.00			
STA. 708+31.00 TO STA. 717+06.00	1	26			4	4			2,527.78	1.01		212.33		266.00					
STA. 717+06.00 TO STA. 718+00.00	2	26			4	4			271.56	0.11		22.81		28.58					
STA. 718+00.00 TO STA. 718+39.00	2	26	4	4					112.67	0.06		9.46	34.67	2.96	7.70	78.00			
STA. 718+39.00 TO STA. 722+89.00	2	26	4	4					1,300.00	0.68		109.20	400.00	34.20	88.89	900.00			
STA. 722+89.00 TO STA. 729+40.00	2	26	4	4					1,880.67	0.98		157.98	578.67	49.48	128.59	1302.00			
STA. 729+40.00 TO STA. 732+30.00	1	26	4	4					837.78	0.44		70.37	257.78	22.04	57.28	580.00			
STA. 732+30.00 TO STA. 739+90.00	1	26			4	4			2,195.56	0.88		184.43		231.04					
STA. 739+90.00 TO STA. 746+10.00	9	26			4	4			1,791.11	0.72		150.45		188.48					
STA. 746+10.00 TO STA. 747+11.00	11	26	4			4			336.67	0.13		28.28		15.35					
STA. 747+11.00 TO STA. 748+79.78	11	26	4			4			562.60	0.23		47.26		25.65					
STA. 748+79.78 TO STA. 749+50.00	11	26	4			4			234.07	0.09		19.66		10.67					
STA. 749+50.00 TO STA. 750+89.00	12	26	4			4			463.33	0.19		38.92		21.13					
STA. 750+89.00 TO STA. 752+43.82	12	26	4	4					584.88	0.23		49.13		11.77					
STA. 752+43.82 TO STA. 752+73.82	BUTT JOINT	26	4	4	4	4		113.33	18.89		0.05	9.52		9.12					
STA. 752+73.82 TO STA. 754+25.33									WARSAW RUN CREEK S.N. 072-0165										
STA. 754+25.33 TO STA. 754+55.33	BUTT JOINT	26	4	4	4	4		113.33	18.89		0.05	9.52		9.12					
STA. 754+55.33 TO STA. 756+00.00	12	26	4	4					546.53	0.22		45.91		10.99					
STA. 756+00.00 TO STA. 756+08.00	12	26	4	4					30.22	0.01		2.54		0.61					
STA. 756+08.00 TO STA. 756+74.78	9	26			4	4			192.92	0.08		16.21		20.30					
STA. 756+74.78 TO STA. 757+46.74	10	26			4	4			207.88	0.08		17.46		21.88					
STA. 757+46.74 TO STA. 775+06.74 BK	9	26	4			4			5,866.67	2.35		492.80		267.52					
STA. 775+09.09 AH TO STA. 798+66.50	1	26			4	4			6,810.30	2.72		572.06		716.65					
STA. 798+66.50 TO STA. 799+41.10	8	26	4	4					281.82	0.11		23.67		5.67					
STA. 799+41.10 TO STA. 799+71.10	BUTT JOINT	26	4	4	4	4		113.33	18.89		0.05	9.52		9.12					
STA. 799+71.10 TO STA. 802+47.27									KICKAPOO CREEK S.N. 072-0047										
STA. 802+47.27 TO STA. 802+77.27	BUTT JOINT	26	4	4	4	4		113.33	18.89		0.05	9.52		9.12					
STA. 802+77.27 TO STA. 803+51.50	8	26	4	4					280.42	0.11		23.56		5.64					
STA. 803+51.50 TO STA. 813+22.00	1	26			4	4			2,803.67	1.12		235.51		295.03					
STA. 813+22.00 TO STA. 813+62.00	8	26		4	4				133.33	0.05		11.20		6.08					
STA. 813+62.00 TO STA. 814+63.75	8	26	4	4					384.39	0.15		32.29		7.73					
STA. 814+63.75 TO STA. 814+93.75	BUTT JOINT	26	4	4	4	4		113.33	18.89		0.05	9.52		9.12					
STA. 814+93.75 TO STA. 816+08.75									DEER LICK CREEK S.N. 072-0166										
STA. 816+08.75 TO STA. 816+38.75	BUTT JOINT	26	4	4	4	4		113.33	18.89		0.05	9.52		9.12					
STA. 816+38.75 TO STA. 817+33.00	8	26	4	4					356.06	0.14		29.91		7.16					
STA. 817+33.00 TO STA. 817+81.00	8	26	4			4			160.00	0.06		13.44		7.30					
STA. 817+81.00 TO STA. 824+84.00	1	26			4	4			2,030.89	0.81		170.59		213.71					
STA. 824+84.00 TO STA. 825+14.00	BUTT JOINT	26	4	4				113.33	18.89		0.05	9.52		2.28					
SUB-TOTAL								1,866.67	311.11	192,517.20	79.75	1,744.27	14,583.98	5,077.78	15,093.71	1,128.40	11,425.00		
TOTAL								1,867	311	192,517	80	1,744	14,584	5,078	15,094	1,128	11,425		

SCHEDULE OF SIDE ROADS AND ENTRANCES

LOCATION	AREA SQ YD	HMA SURFACE REMOVAL - BUTT JOINT	TEMPORARY RAMP	HMA SURFACE REMOVAL, 1 1/2 IN	INCIDENTAL HMA SURFACING	POLYMERIZED BITUMINOUS MATERIALS PRIME COAT	AGGREGATE SHOULDERS, TYPE B	AGGREGATE SURFACE CSE TYPE B	
		SQ YD	SQ YD	SQ YD	TON	SQ YD	TON	TON	
SIDE ROADS:									
CHRISTMAS LN.									
STA. 34+36.00 TO STA. 34+87.00	348.50	26.67	13.33	321.83	29.27	0.14	15.50		
STA. 35+13.00 TO STA. 35+48.00	184.72	24.44	12.22	160.28	15.52	0.07	10.64		
BELL SCHOOL RD. (CH 34)									
STA. 44+38.00 TO STA. 44+87.00	258.61	30.00	15.00	228.61	21.72	0.10	14.90		
STA. 45+13.00 TO STA. 46+18.00	1,324.17	30.00	15.00	1,294.17	111.23	0.53	31.92		
PULSIFER RD. (CH 69)									
STA. 53+95.00 TO STA. 54+87.00	1,139.78	33.33	16.67	1,106.44	95.74	0.46	27.97		
STA. 55+13.00 TO STA. 55+93.00	546.67	26.67	13.33	520.00	45.92	0.22	24.32		
MAHER RD.									
STA. 65+13.00 TO STA. 67+27.00	1,914.11	35.56	17.78	1,878.56	160.79	0.77	65.06		
OAKHILL CEMETERY RD.									
STA. 84+17.00 TO STA. 84+87.00	435.56	28.89	14.44	406.67	36.59	0.17	21.28		
STA. 85+13.00 TO STA. 85+67.00	384.00	28.89	14.44	355.11	32.26	0.15	16.42		
BROAD ST.									
STA. 94+12.00 TO STA. 94+87.00	625.00	33.33	16.67	591.67	52.50	0.25	22.80		
TEXAS RD.									
STA. 101+97.00 TO STA. 104+87.00	3,947.22	50.00	25.00	3,897.22	331.57	1.58	88.16		
MCINTYRE RD./ WOLFORD RD.									
STA. 114+40.00 TO STA. 114+87.00	305.50	26.67	13.33	278.83	25.66	0.12	14.29		
STA. 115+13.00 TO STA. 115+76.00	525.00	26.67	13.33	498.33	44.10	0.21	19.15		
EDEN RD.									
STA. 123+37.00 TO STA. 124+87.00	1,391.67	24.44	12.22	1,367.22	116.90	0.56	45.60		
STA. 125+13.00 TO STA. 126+02.00	370.83	15.56	7.78	355.28	31.15	0.15	27.06		
ROCKHILL RD/ TOWNHOUSE RD.									
STA. 133+82.00 TO STA. 134+87.00	1,137.50	26.67	13.33	1,110.83	95.55	0.46	31.92		
STA. 135+13.00 TO STA. 136+81.00	1,950.67	26.67	13.33	1,924.00	163.86	0.78	51.07		
CUTOFF RD.									
STA. 10+13.00 TO STA. 10+72.00	458.89	26.67	13.33	432.22	38.55	0.18	17.94		
STA. 25+13.00 TO STA. 25+63.00	358.33	26.67	13.33	331.67	30.10	0.14	15.20		
KRAMM RD.									
STA. 155+13.00 TO STA. 155+71.00	402.78	26.67	13.33	376.11	33.83	0.16	17.63		
MADER RD.									
STA. 900+13.00 TO STA. 900+89.00	451.78	17.78	8.89	434.00	37.95	0.18	23.10		
COTTONWOOD RD.									
STA. 1023+57.00 TO STA. 1024+87.00	2,361.67	35.56	17.78	2,326.11	198.38	0.94	39.52		
STA. 1025+13.00 TO STA. 1025+66.00	341.56	26.67	13.33	314.89	28.69	0.14	16.11		
TAYLOR RD.									
STA. 1053+47.68 TO STA. 1054+67.68	2,366.67	37.78	18.89	2,328.89	198.80	0.95	36.48		
KICKAPOO-EDWARDS RD.									
STA. 1050+13.00 TO STA. 1051+08.00	1,551.67	35.56	17.78	1,516.11	130.34	0.62	28.88		
ENTRANCES AND MAILBOX TURNOUTS									
PRIVATE ENTRANCES:									
HMA -	52	750.88		750.88	63.07	0.30			
AGGREGATE -	34	490.96						111.94	
PCC -	30	433.20							
FIELD ENTRANCES:									
AGGREGATE -	75	1,083.00						246.92	
MAILBOX TURNOUTS:									
HMA -	43	620.92		620.92	52.16	0.25			
AGGREGATE -	3	43.32						9.88	
SUBTOTAL			727.78	363.89	25,726.86	2,222.19	10.58	722.91	368.74
TOTAL			728	364	25,727	2,222	11	723	369

PRIME COAT CONVERSION FACTORS

SURFACE TYPE	BIT PR COAT	AGG PR COAT
	(GAL/SQ YD)	(LB/SQ YD)
COLD MILLED SURFACES	0.1	4
EXISTING PAVEMENT	0.05	4
NEW HMA COURSES	0.03	2

HMA & AGGREGATE CONVERSION FACTORS

SURFACE TYPE	LB	TON
	SQ YD IN	CU YD
HMA COURSES	112	2.016
COARSE AGGREGATE	114	2.05
FINE AGGREGATE		1.5

MATERIAL TRANSFER DEVICE

LOCATION	TON
POLYMERIZED HMA SURFACE CSE	1,744
HMA SURFACE CSE	14,584
TOTAL	16,328

RUMBLE STRIP

LOCATION	SQ FT
STA. 178+03 TO STA. 186+28	900.00
TOTAL	900

MOWING

LOCATION	UNIT
IL 8	1,275
TOTAL	1,275

FILE NAME = 68961 - Phase II.dgn

USER NAME = johnsantv
 PLOT SCALE = 1/8"=1'-0"
 PLOT DATE = 3/18/2018

DESIGNED -
 DRAWN -
 CHECKED -
 DATE -

REVISED -
 REVISED -
 REVISED -
 REVISED -

**STATE OF ILLINOIS
 DEPARTMENT OF TRANSPORTATION**

SCHEDULES OF QUANTITIES

SCALE: SHEET NO. 4 OF 6 SHEETS STA. TO STA.

F.A.S. SECTION COUNTY TOTAL SHEETS SHEET NO.
 1388 Z-1(D-15)RS-7(1)V,E,2,4)RS-42 PEORIA 32 15
 CONTRACT NO. 68961
 [ILLINOIS] FED. AID PROJECT

EPOXY PAVEMENT MARKING SCHEDULE

LOCATION	LINE 4"		LINE 8"	LINE 24"	RAISED REFLECTIVE PAVEMENT MARKER EACH
	WHITE	YELLOW	WHITE	WHITE	
	FT		FT	FT	
MAINLINE					
STA. 176+49.74 TO STA. 775+06.74 BK	119,714				749
STA. 775+09.09 AH TO STA. 825+14.00	10,010	75,298			64
SIDE ROADS					
BELL SCHOOL RD (CH 34)					
STA. 44+38.00 TO STA. 44+87.00	98		80		
STA. 45+13.00 TO STA. 46+18.00	210				
PULSIFER RD (CH 69)					
STA. 53+95.00 TO STA. 54+87.00	184		95		
STA. 55+13.00 TO STA. 55+93.00	160				
MAHER RD.					
STA. 65+13.00 TO STA. 67+27.00	428	54	70		
OAKHILL CEMETERY RD.					
STA. 84+17.00 TO STA. 84+87.00	140				
STA. 85+13.00 TO STA. 85+67.00	108				
BROAD ST.					
STA. 94+12.00 TO STA. 94+87.00	150				
TEXAS RD.					
STA. 101+97.00 TO STA. 104+87.00	580	363	60		
MCINTYRE RD./ WOLFORD RD.					
STA. 114+40.00 TO STA. 114+87.00	94				
STA. 115+13.00 TO STA. 115+76.00	126				
EDEN RD.					
STA. 123+37.00 TO STA. 124+87.00	300	38			
STA. 125+13.00 TO STA. 126+02.00	178				
ROCKHILL RD./ TOWNHOUSE RD.					
STA. 133+82.00 TO STA. 134+87.00	210	26			
STA. 135+13.00 TO STA. 136+81.00	336	42			
CUTOFF RD.					
STA. 10+13.00 TO STA. 10+72.00	118				
STA. 25+13.00 TO STA. 25+63.00	100				
KRAMM RD.					
STA. 155+13.00 TO STA. 155+71.00	116				
MADER RD.					
STA. 900+13.00 TO STA. 900+89.00	152				
COTTONWOOD RD.					
STA. 1023+57.00 TO STA. 1024+87.00	260	260	70		
STA. 1025+13.00 TO STA. 1025+66.00	106				
TAYLOR RD.					
STA. 1053+47.68 TO STA. 1054+67.68	240	240	70	40	
KICKAPOO-EDWARDS RD.					
STA. 1050+13.00 TO STA. 1051+08.00	190	190	35	40	
SUB-TOTAL					
	134,308	76,510	480	80	813
TOTAL					
	210,818		480	80	813

NOTE: PRIOR TO PLACING CENTERLINE STRIPING, CONTACT THE DISTRICT BUREAU OF OPERATIONS FOR A "NO PASSING ZONE" EVALUATION

SHORT-TERM PAVEMENT MARKING

LOCATION	LENGTH	NO. OF APPLICATIONS	TOTAL
	FT		
STA. 176+49.74 TO STA. 775+06.74 BK	5,986	3	17,957
STA. 775+09.09 AH TO STA. 825+14.00	500	3	1,501
SUB-TOTAL			19,459
TOTAL			19,459

WORK ZONE PAVEMENT MARKING REMOVAL

LOCATION	SQ FT	
STA. 176+49.74 TO STA. 775+06.74 BK	1,995	
STA. 775+09.09 AH TO STA. 825+14.00	167	
TOTAL		2,162

RAISED REFLECTIVE PAVEMENT MARKER REMOVAL

LOCATION	EACH	
IL 8	796	
TOTAL		796

CHANGEABLE MESSAGE SIGN

LOCATION	NO. SIGNS	CAL DA
IL 78	1	7
IL 8	1	7
MAHER RD.	1	7
TOTAL		21

FILE NAME = 68961 - Phase II.dgn
 USER NAME = johnsontv
 PLOT SCALE = 100.0000 "/ IN.
 PLOT DATE = 3/18/2010

DESIGNED -	REVISED -
DRAWN -	REVISED -
CHECKED -	REVISED -
DATE -	REVISED -

**STATE OF ILLINOIS
DEPARTMENT OF TRANSPORTATION**

SCHEDULES OF QUANTITIES

SCALE: SHEET NO. 5 OF 6 SHEETS STA. TO STA.

F.A.S. RTE.	SECTION	COUNTY	TOTAL SHEETS	SHEET NO.
1388	Z-(ID-15D)RS-7s(IV,E,2,4)RS-43	PEORIA	32	16
CONTRACT NO. 68961			ILLINOIS FED. AID PROJECT	

SCHEDULE OF GUARDRAIL QUANTITIES

LOCATION	TRAFFIC BARRIER TERMINAL REMOVAL, TY 1	TRAFFIC BARRIER TERMINAL TY 1, SPECIAL (TANGENT)	TERMINAL MARKER - DIRECT APPLIED	GUARDRAIL AGG. EROSION CONTROL
	EACH	EACH	EACH	TON
RT. STA. 192+24.00	1	1	1	5.07
LT. STA. 193+25.00	1	1	1	5.07
RT. STA. 196+00.00	1	1	1	5.07
LT. STA. 197+22.00	1	1	1	5.07
LT. STA. 453+27.00	1	1	1	5.07
RT. STA. 460+90.00	1	1	1	5.07
LT. STA. 461+73.00	1	1	1	5.07
RT. STA. 478+42.00	1	1	1	5.07
LT. STA. 478+68.00	1	1	1	5.07
RT. STA. 482+10.00	1	1	1	5.07
LT. STA. 482+20.00	1	1	1	5.07
RT. STA. 583+50.00	1	1	1	5.07
LT. STA. 583+90.00	1	1	1	5.07
RT. STA. 597+56.00	1	1	1	5.07
LT. STA. 598+00.00	1	1	1	5.07
RT. STA. 798+68.00	1	1	1	5.07
LT. STA. 798+68.00	1	1	1	5.07
RT. STA. 803+45.00	1	1	1	5.07
LT. STA. 803+45.00	1	1	1	5.07
LT. STA. 813+60.00	1	1	1	5.07
RT. STA. 817+30.00	1	1	1	5.07
LT. STA. 818+00.00	1	1	1	5.07
TOTAL:	22	22	22	111

CLASS D PATCHES - 15 IN

PATCHING UNIT	LOCATION	LANE	SIZE	TYPE II		TYPE III		TYPE IV	
				NO.	SQ YD	NO.	SQ YD	NO.	SQ YD
1	IL 78 TO CHRISTMAS LN. STA. 176+49.74 TO STA. 227+80.45	EB/WB	6 X 12	42	336.00				
2	CHRISTMAS LN. TO BELL SCHOOL RD. STA. 227+80.45 TO STA. 280+72.10	EB/WB	6 X 12	24	192.00				
			10 X 12	1	13.33				
			20 X 12					1	26.67
3	BELL SCHOOL RD. TO PULSIFER RD. STA. 280+72.10 TO STA. 361+55.00	EB/WB	6 X 12	69	552.00				
			20 X 12					3	80.00
4	PULSIFER RD. TO MAHER RD. STA. 361+55.00 TO STA. 438+72.00	EB/WB	6 X 12	90	720.00				
			20 X 12					1	26.67
			25 X 12					1	33.33
5	MAHER RD. TO TEXAS RD. STA. 438+72.00 TO STA. 484+76.12	EB/WB	6 X 12	1	8.00				
6	TEXAS RD. TO MCINTYRE RD./ WOLFORD RD. STA. 484+76.12 TO STA. 540+80.15	EB/WB	6 X 12	20	160.00				
7	MCINTYRE RD./ WOLFORD RD. TO EDN RD. STA. 540+80.15 TO STA. 567+94.67	EB/WB	6 X 12	12	96.00				
8	EDEN RD. TO ROCKHILL RD./ TOWNHOUSE RD. STA. 567+94.67 TO STA. 627+65.20	EB/WB	6 X 12	6	48.00				
9	ROCKHILL RD./ TOWNHOUSE RD. TO MADER RD. STA. 627+65.20 TO STA. 720+46.00	EB/WB	6 X 12	27	216.00			1	20.00
10	MADER RD. TO COTTONWOOD RD. STA. 720+46.00 TO STA. 767+33.79	EB/WB	6 X 12	13	104.00				
			10 X 12	4	53.33				
			20 X 12					4	106.67
11	COTTONWOOD RD. TO KICKAPOO-EDWARDS RD. STA. 767+33.79 TO STA. 825+14.00	EB/WB	6 X 12	15	120.00				
			20 X 12					3	80.00
TOTAL					2,619		20		380

MOBILIZATION

LOCATION	L SUM
IL 8	1
TOTAL	1

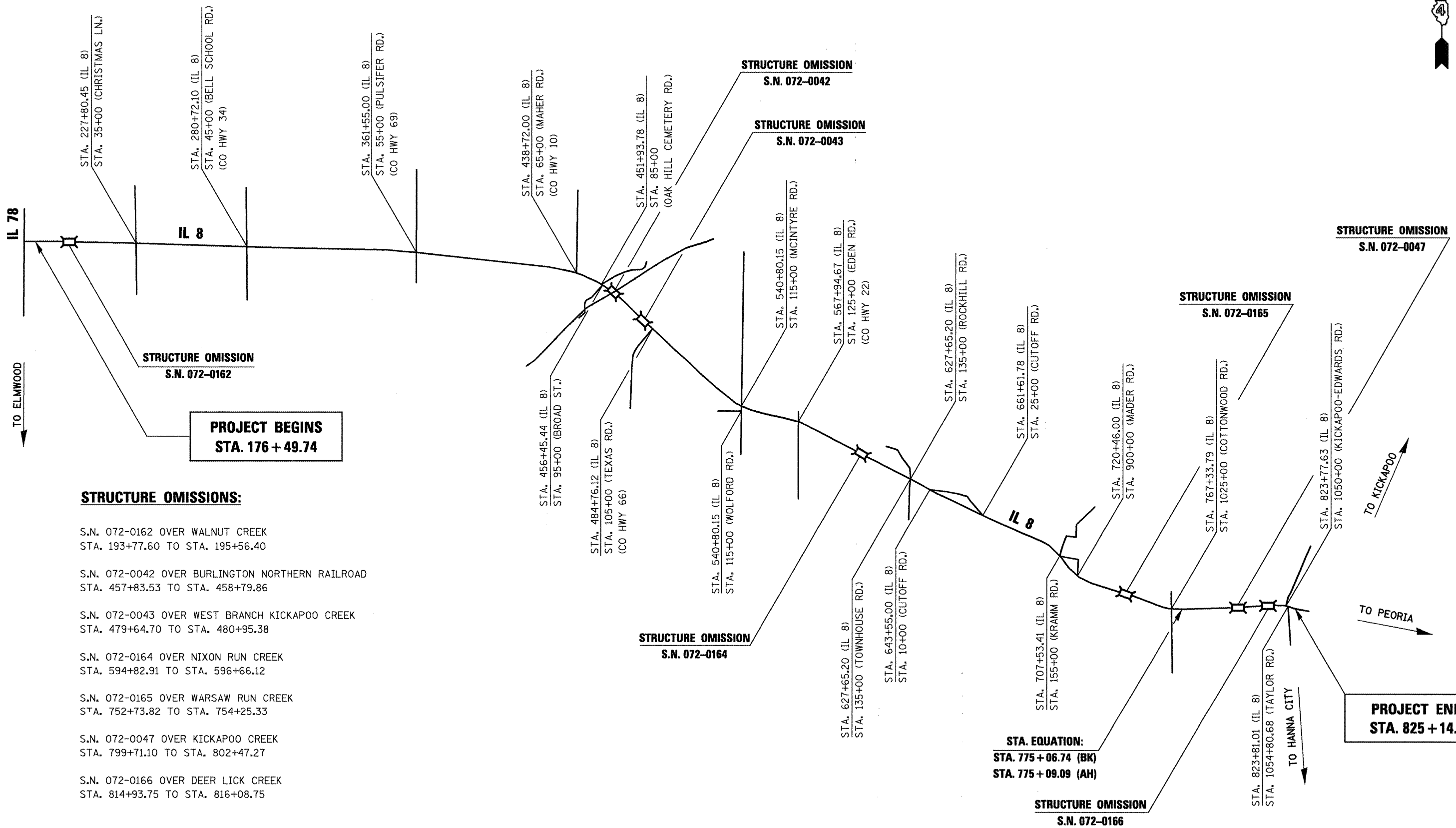
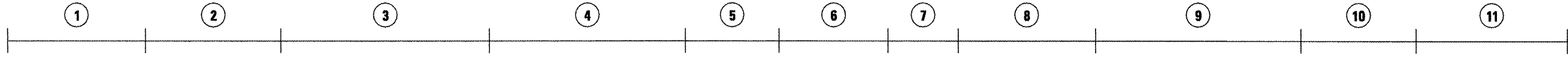
TRAFFIC CONTROL AND PROTECTION

LOCATION	STD. 701201	STD. 701306	STD. 701326	STD. 701336
	L SUM	L SUM	L SUM	L SUM
IL 8	1	1	1	1
TOTAL	1	1	1	1

TRAFFIC CONTROL SURVEILLANCE

LOCATION	CAL DA
IL 8	15
TOTAL	15

PATCHING UNITS:



STRUCTURE OMISSIONS:

- S.N. 072-0162 OVER WALNUT CREEK
STA. 193+77.60 TO STA. 195+56.40
- S.N. 072-0042 OVER BURLINGTON NORTHERN RAILROAD
STA. 457+83.53 TO STA. 458+79.86
- S.N. 072-0043 OVER WEST BRANCH KICKAPOO CREEK
STA. 479+64.70 TO STA. 480+95.38
- S.N. 072-0164 OVER NIXON RUN CREEK
STA. 594+82.91 TO STA. 596+66.12
- S.N. 072-0165 OVER WARSAW RUN CREEK
STA. 752+73.82 TO STA. 754+25.33
- S.N. 072-0047 OVER KICKAPOO CREEK
STA. 799+71.10 TO STA. 802+47.27
- S.N. 072-0166 OVER DEER LICK CREEK
STA. 814+93.75 TO STA. 816+08.75

FILE NAME =	USER NAME = johnsonv
68961 - Phase II.dgn	

DESIGNED -	REVISD -
DRAWN -	REVISD -
CHECKED -	REVISD -
PLOT DATE = 3/18/2010	REVISD -

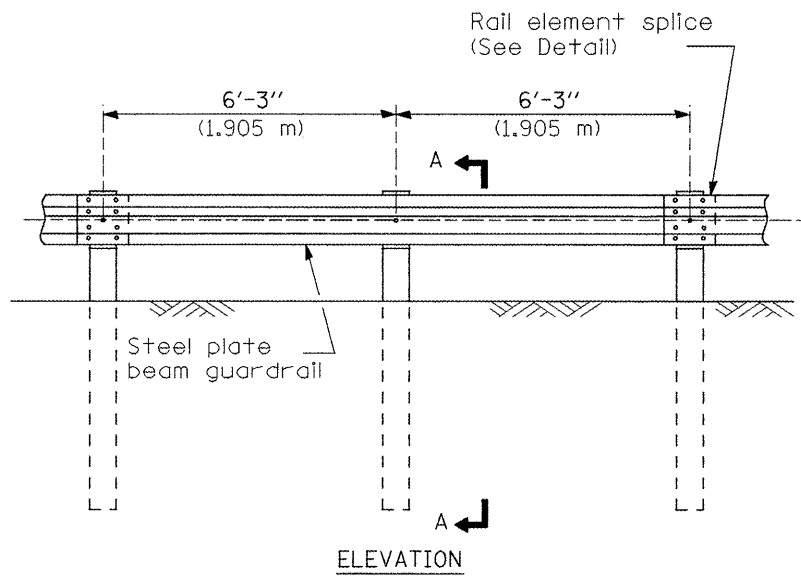
DATE -	REVISD -
--------	----------

**STATE OF ILLINOIS
DEPARTMENT OF TRANSPORTATION**

LINE DIAGRAM

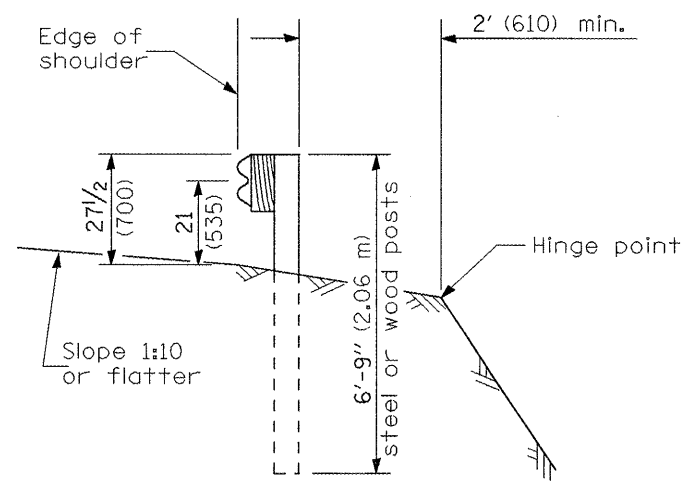
NOT TO SCALE SHEET NO. 1 OF 1 SHEETS STA. TO STA.

F.A.S. RTE.	SECTION	COUNTY	TOTAL SHEETS	SHEET NO.
1388	Z-[D-15D]RS-7+1V,E,2,4RS-4]	PEORIA	32	18
CONTRACT NO. 68961				
ILLINOIS FED. AID PROJECT				

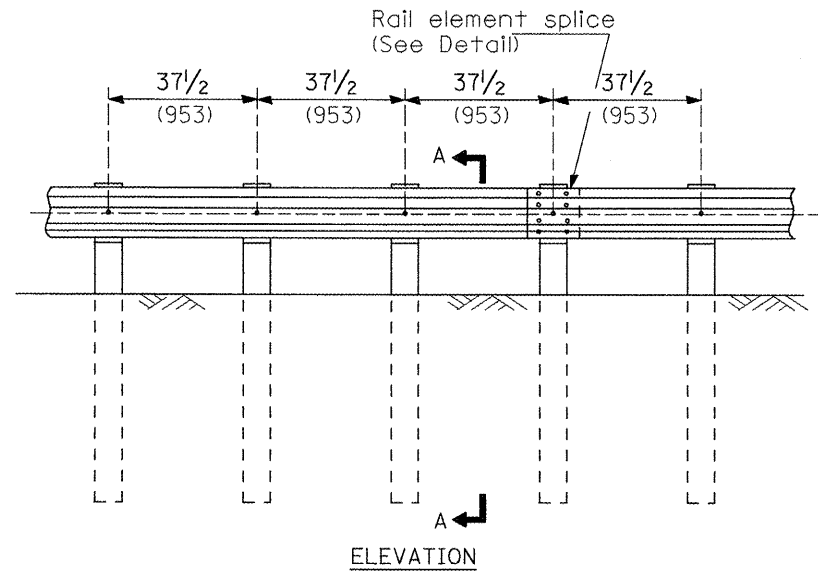


TYPE A

6'-3" (1.905 m) Typical post spacing

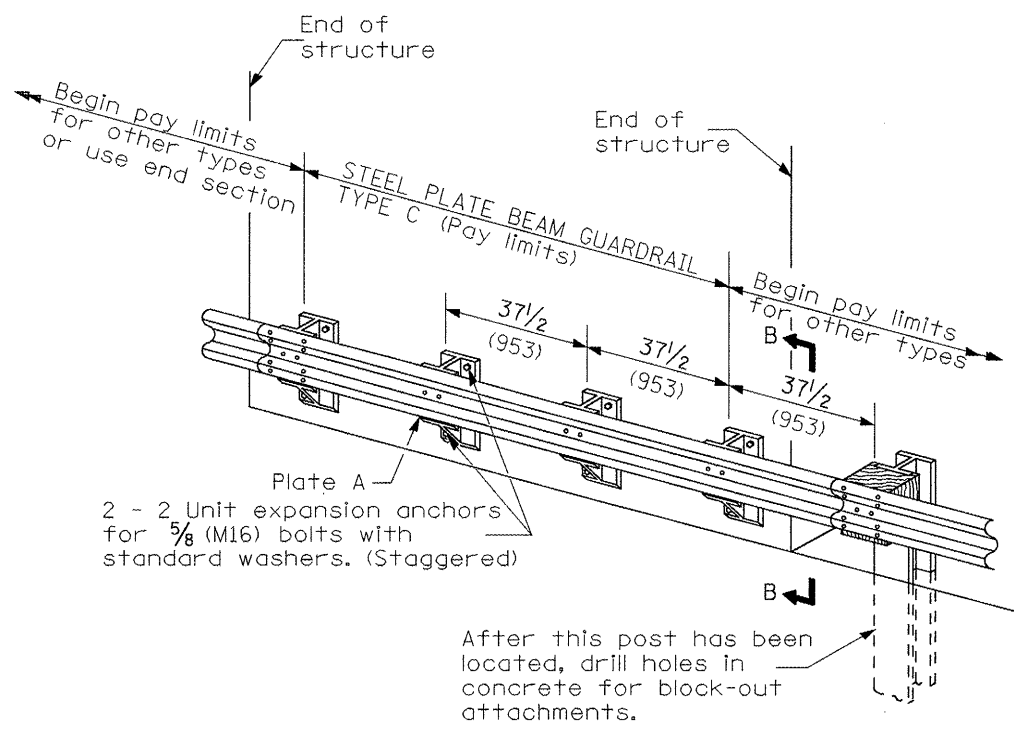


SECTION A-A



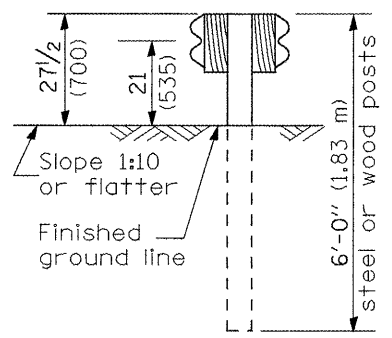
TYPE B

37 1/2 (953) Closed post spacing

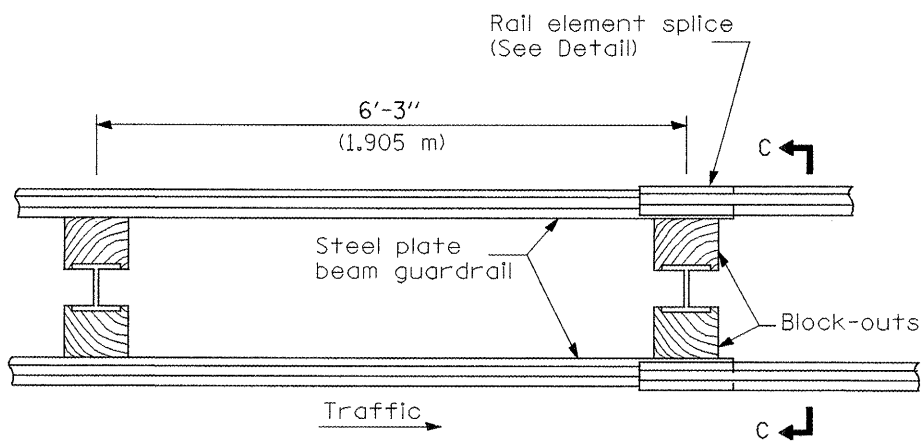


TYPE C

37 1/2 (953) Block-out spacing



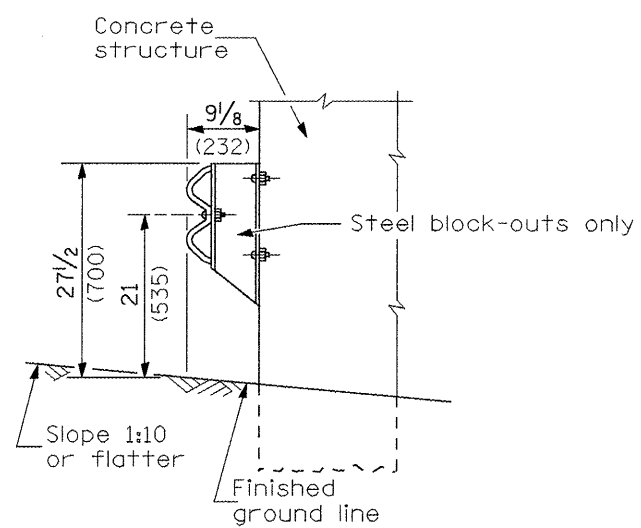
SECTION C-C



PLAN

TYPE D

Double steel plate beam guardrail
6'-3" (1.905 m) typical post spacing



SECTION B-B

GENERAL NOTES

All slope ratios are expressed as units of vertical displacement to units of horizontal displacement (V:H).
All dimensions are in millimeters (inches) unless otherwise shown.
The existing steel posts may be drilled to match the bolt pattern shown herein for the wood block-out, or a new steel post shall be provided.
This detail is applicable to the guardrail system used prior to January 1, 2007. For details on the Midwest Guardrail System, see Standard 630001.

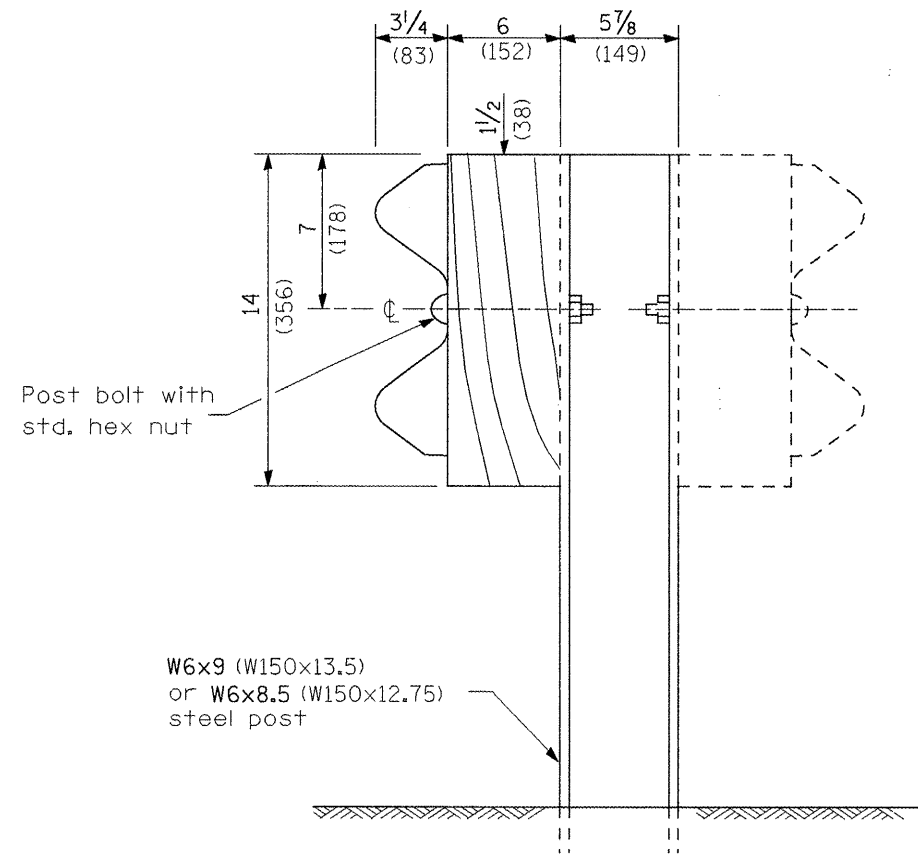
All dimensions are in inches (millimeters) unless otherwise noted.

FILE NAME = 68961 - Phase II.dgn	USER NAME = jahnantv	DESIGNED -	REVISED -
		DRAWN -	REVISED -
		CHECKED -	REVISED -
		DATE -	REVISED -

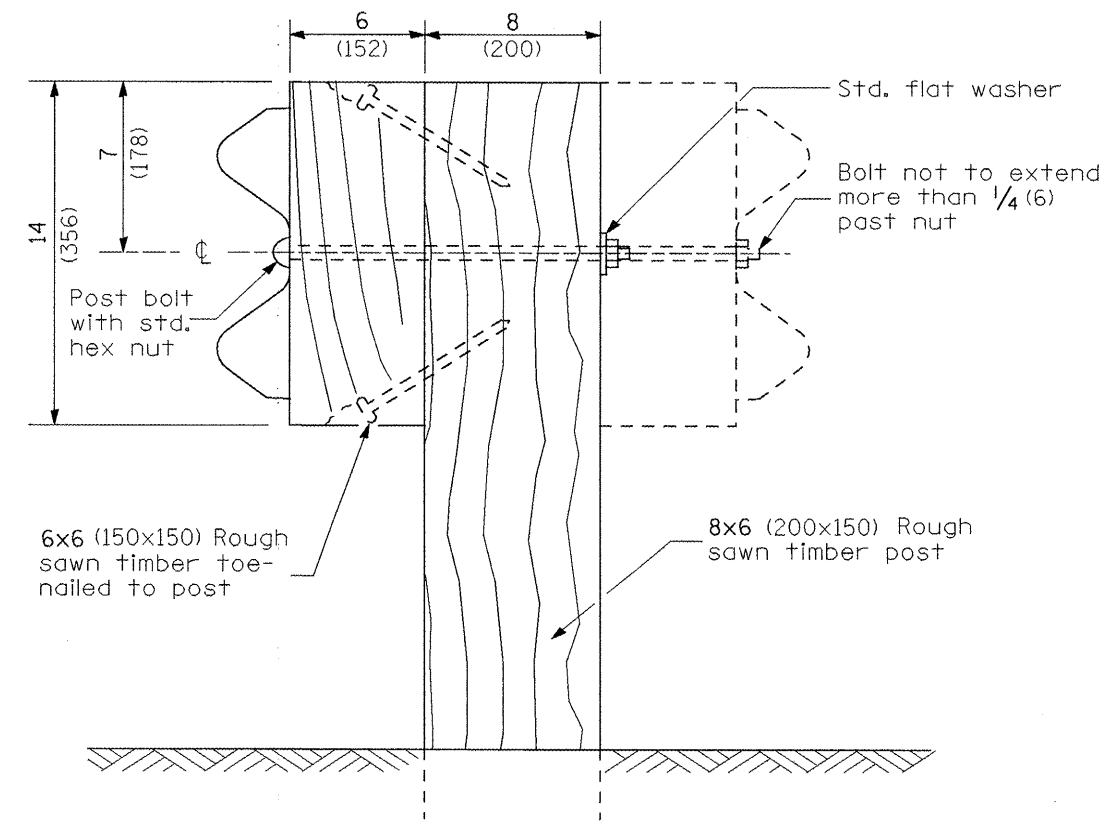
**STATE OF ILLINOIS
DEPARTMENT OF TRANSPORTATION**

GUARDRAIL INSTALLATION DETAIL
SCALE: SHEET NO. 1 OF 4 SHEETS STA. TO STA.

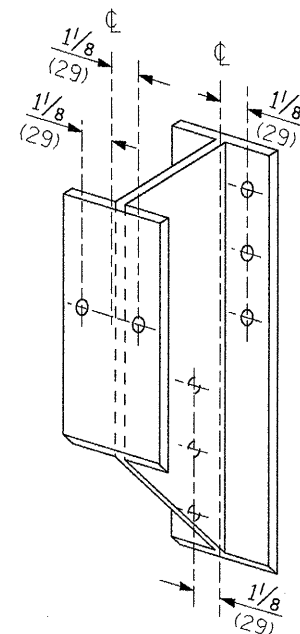
F.A.S. RTE.	SECTION	COUNTY	TOTAL SHEETS	SHEET NO.
1388	Z-[D-15]RS-7+1V,E,2,4RS-4]	PEORIA	32	19
CONTRACT NO. 68961				
ILLINOIS FED. AID PROJECT				



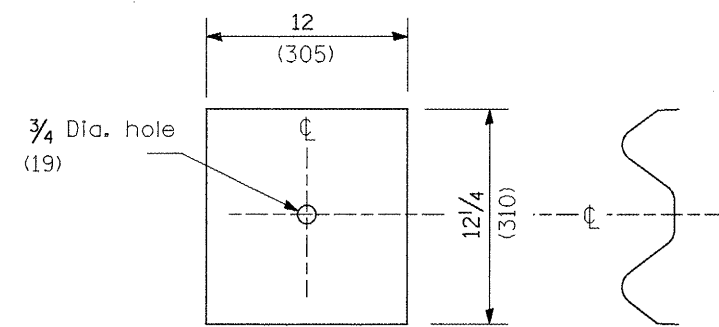
STEEL POST CONSTRUCTION



WOOD POST CONSTRUCTION



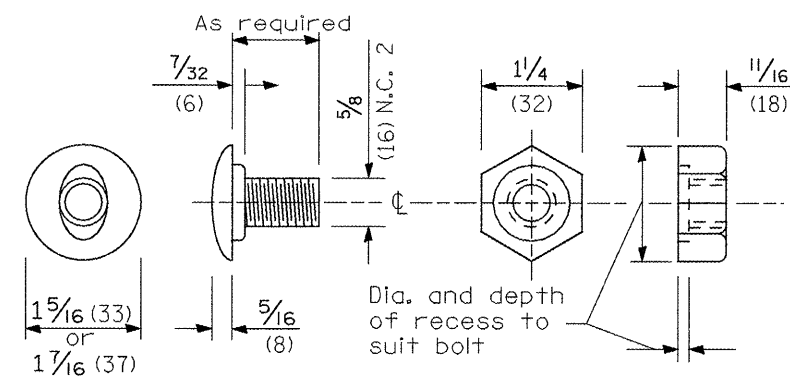
STEEL BLOCK-OUT DETAIL



NOTE

Plate A shall be placed between rail element and block-out at non-splice mounting points only when steel block-outs are used.

PLATE A



POST OR SPLICE BOLT & NUT

All dimensions are in inches (millimeters) unless otherwise noted.

FILE NAME = 68961 - Phase II.dgn	USER NAME = johnsontv	DESIGNED -	REVISED -
		DRAWN -	REVISED -
	PLOT SCALE = 100.0000 "/td> <td>CHECKED -</td> <td>REVISED -</td>	CHECKED -	REVISED -
	PLOT DATE = 3/18/2010	DATE -	REVISED -

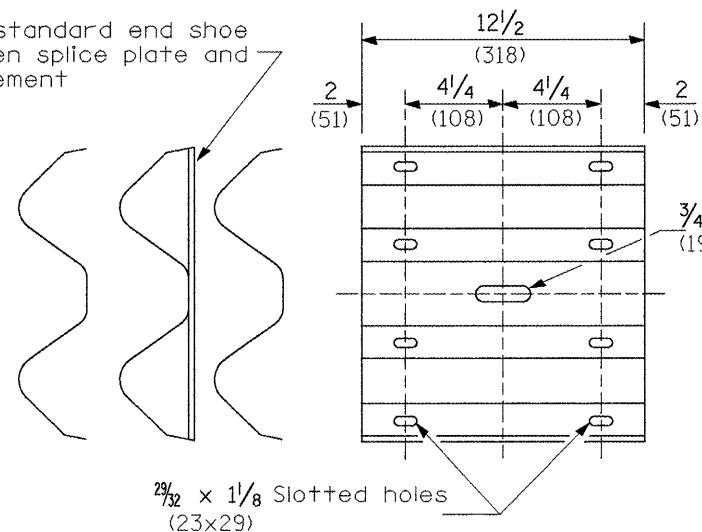
**STATE OF ILLINOIS
DEPARTMENT OF TRANSPORTATION**

GUARDRAIL INSTALLATION DETAIL

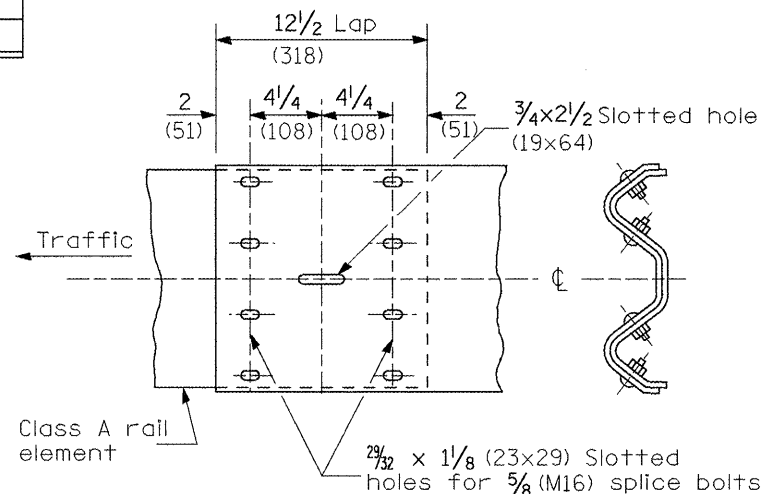
SCALE: SHEET NO. 2 OF 4 SHEETS STA. TO STA.

F.A.S. RTE.	SECTION	COUNTY	TOTAL SHEETS	SHEET NO.
1388	Z-(1D-15D)RS-7(1V,E,2,4)RS-4J	PEORIA	32	20
CONTRACT NO. 68961				
ILLINOIS FED. AID PROJECT				

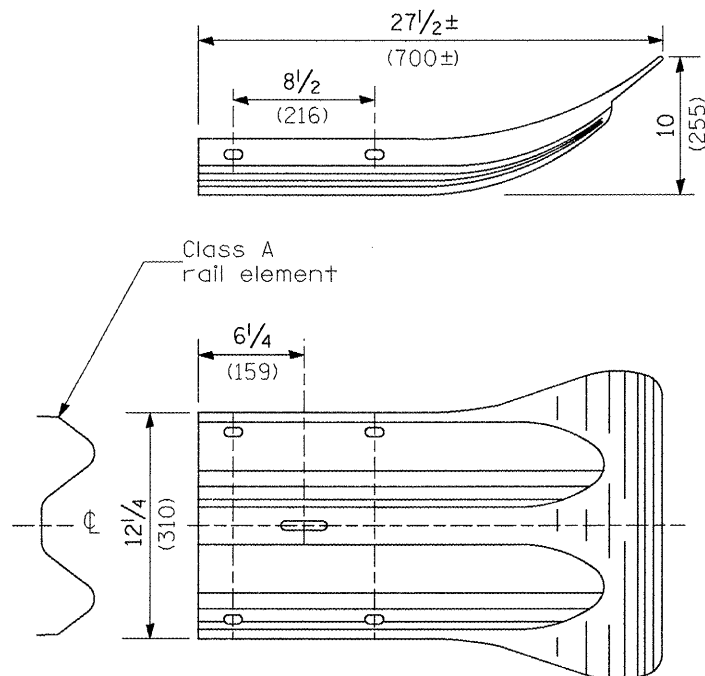
Place standard end shoe between splice plate and rail element



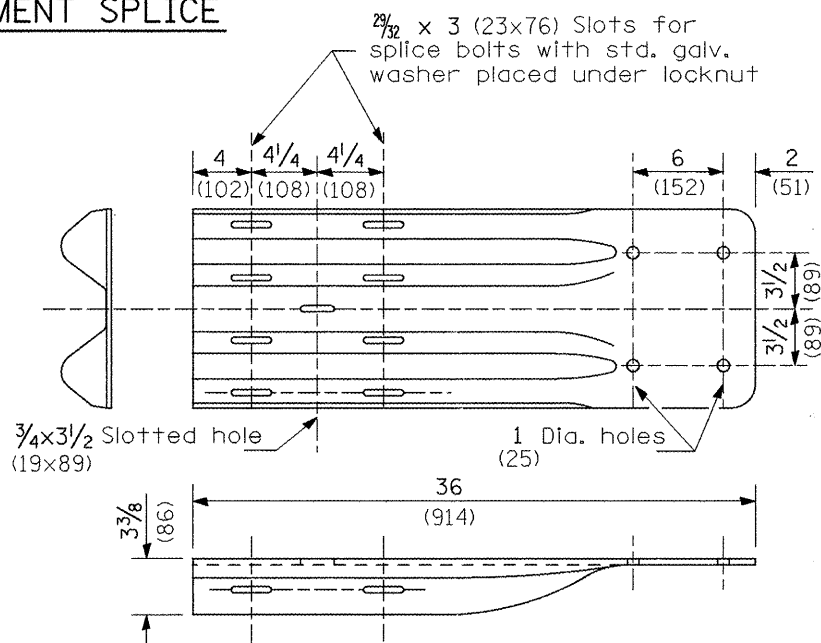
SPLICE PLATE



RAIL ELEMENT SPLICE



END SECTION



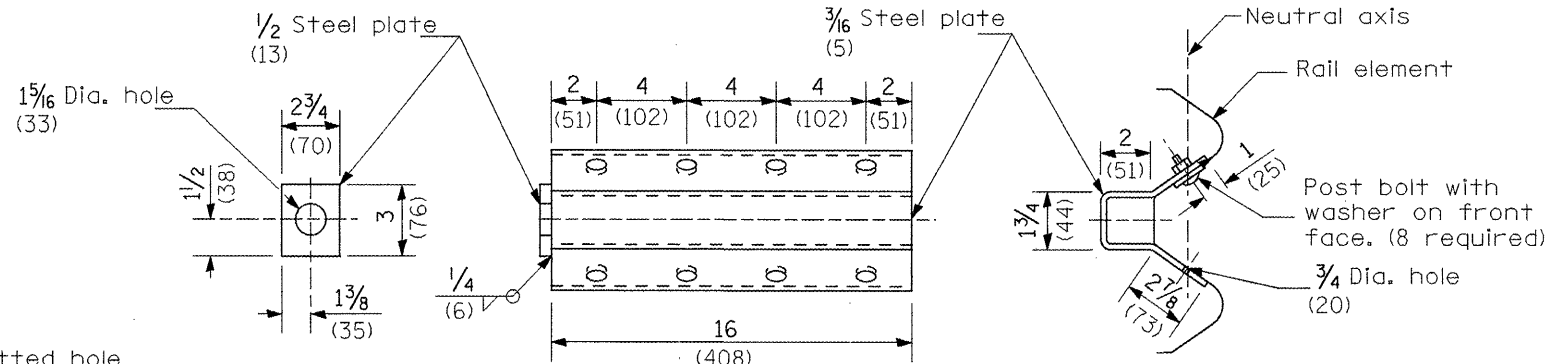
NOTE

When end shoe is attached to a bridge parapet which has an expansion joint, the bolts shall be provided with a locknut or double nut and shall be tightened only to a point that will allow guardrail movement.

The standard end shoe shall be attached to the concrete with pre-drilled or self-drilling anchor bolts. The anchor cone shall be set flush with the surface of the concrete.

Externally threaded studs protruding from the surface of the concrete will not be permitted.

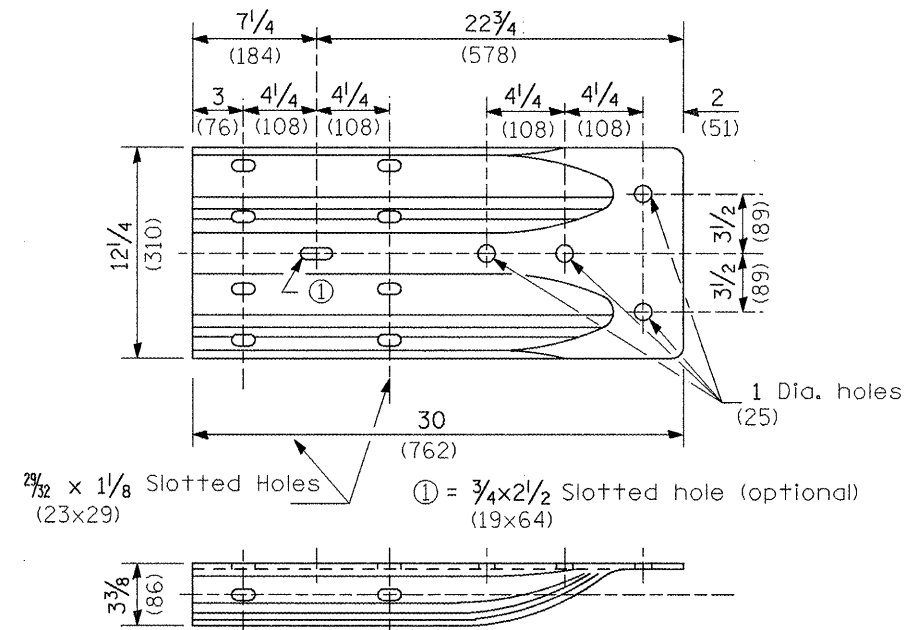
END SHOE



NOTE

Anchor plate T shall be used to attach cable assembly to guardrail when required on traffic barrier terminals.

ANCHOR PLATE T DETAILS



ALTERNATE END SHOE

All dimensions are in inches (millimeters) unless otherwise noted.

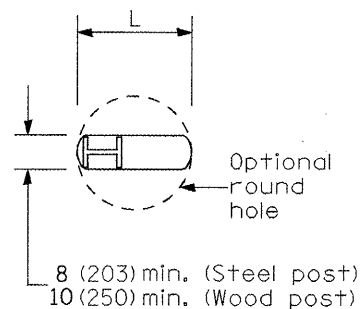
FILE NAME = 68961 - Phase II.dgn	USER NAME = johnsonv	DESIGNED -	REVISED -
		DRAWN -	REVISED -
		CHECKED -	REVISED -
		DATE -	REVISED -

**STATE OF ILLINOIS
DEPARTMENT OF TRANSPORTATION**

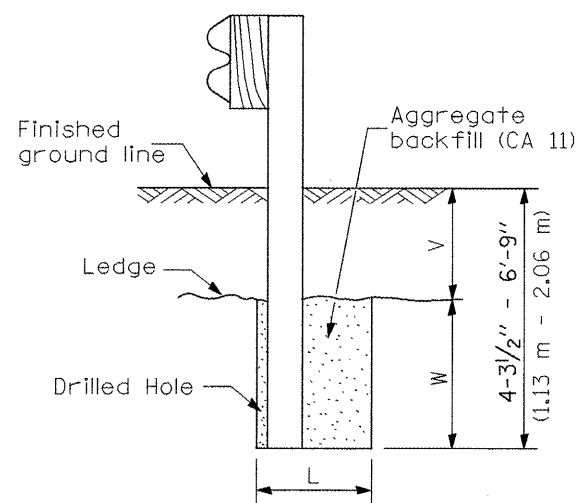
GUARDRAIL INSTALLATION DETAIL

SCALE: SHEET NO. 3 OF 4 SHEETS STA. TO STA.

F.A.S. RTE. 1388	SECTION Z-[I]-15D]RS-7+1V.E.2,4]RS-4]	COUNTY PEORIA	TOTAL SHEETS 32	SHEET NO. 21
CONTRACT NO. 68961			ILLINOIS FED. AID PROJECT	



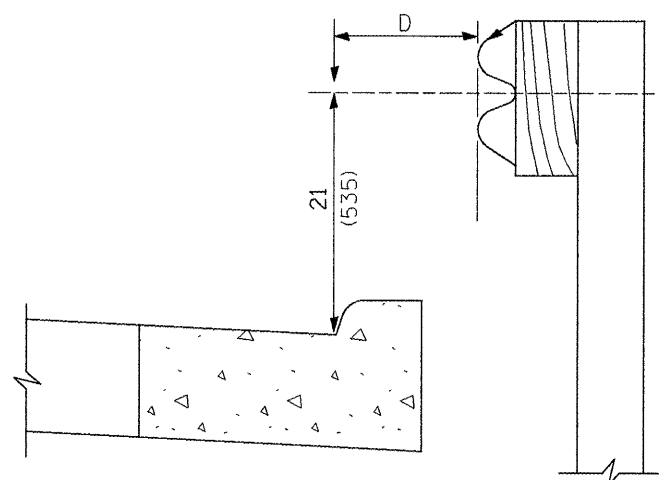
PLAN



Note:
Ledge line is top of rock ledge or hard slag fill.

ELEVATION

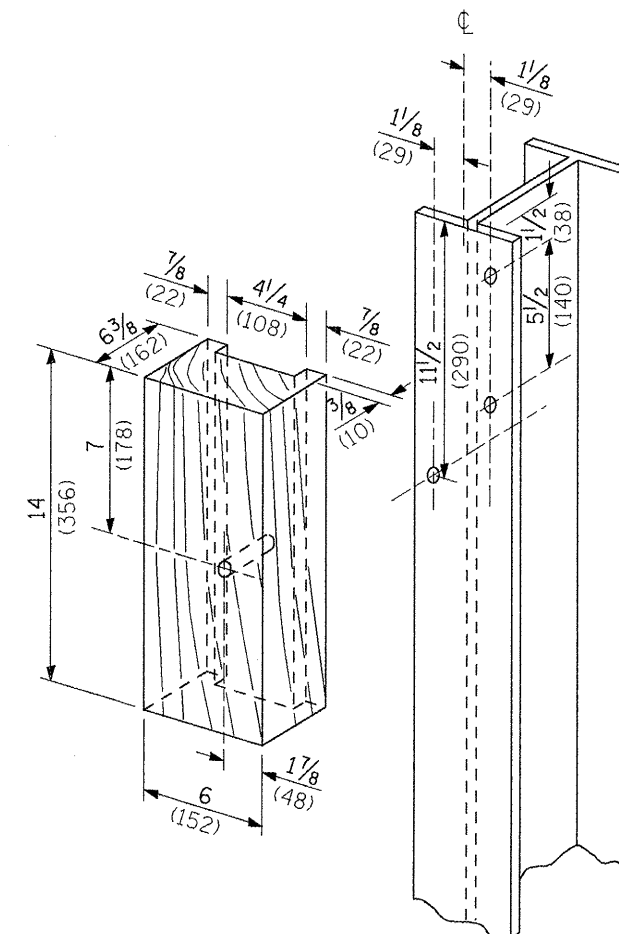
FOOTING FOR POST WHEN IMPERVIOUS MATERIAL IS ENCOUNTERED



Note:
If it is necessary for D to be more than 12 (300) and less than 10'-0" (3.0 m) type M-2 (M-5) curb and gutter (Std. 606001) shall be used in front of and in advance of the guardrail.

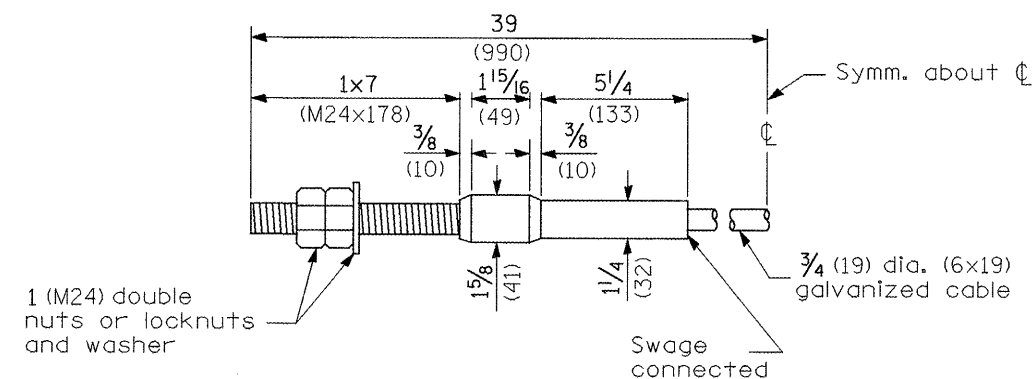
GUARDRAIL PLACED BEHIND CURB

(D = 0 desirable to 12 (300) maximum)



WOOD BLOCK-OUT AND STEEL POST DETAILS

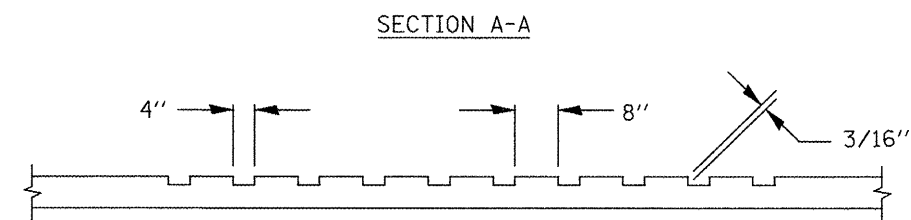
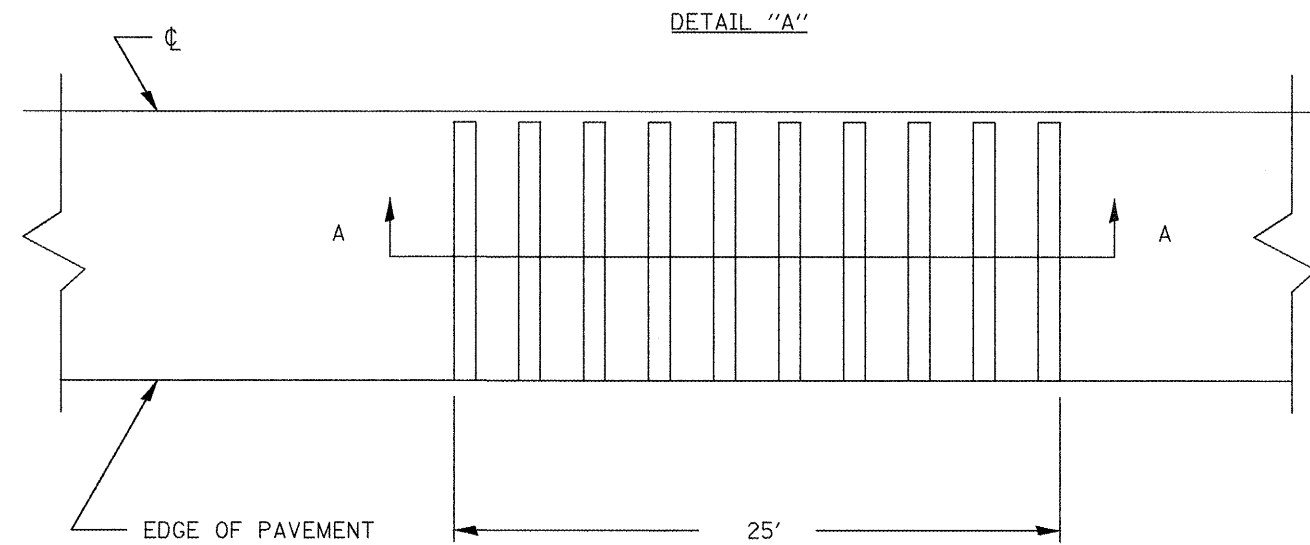
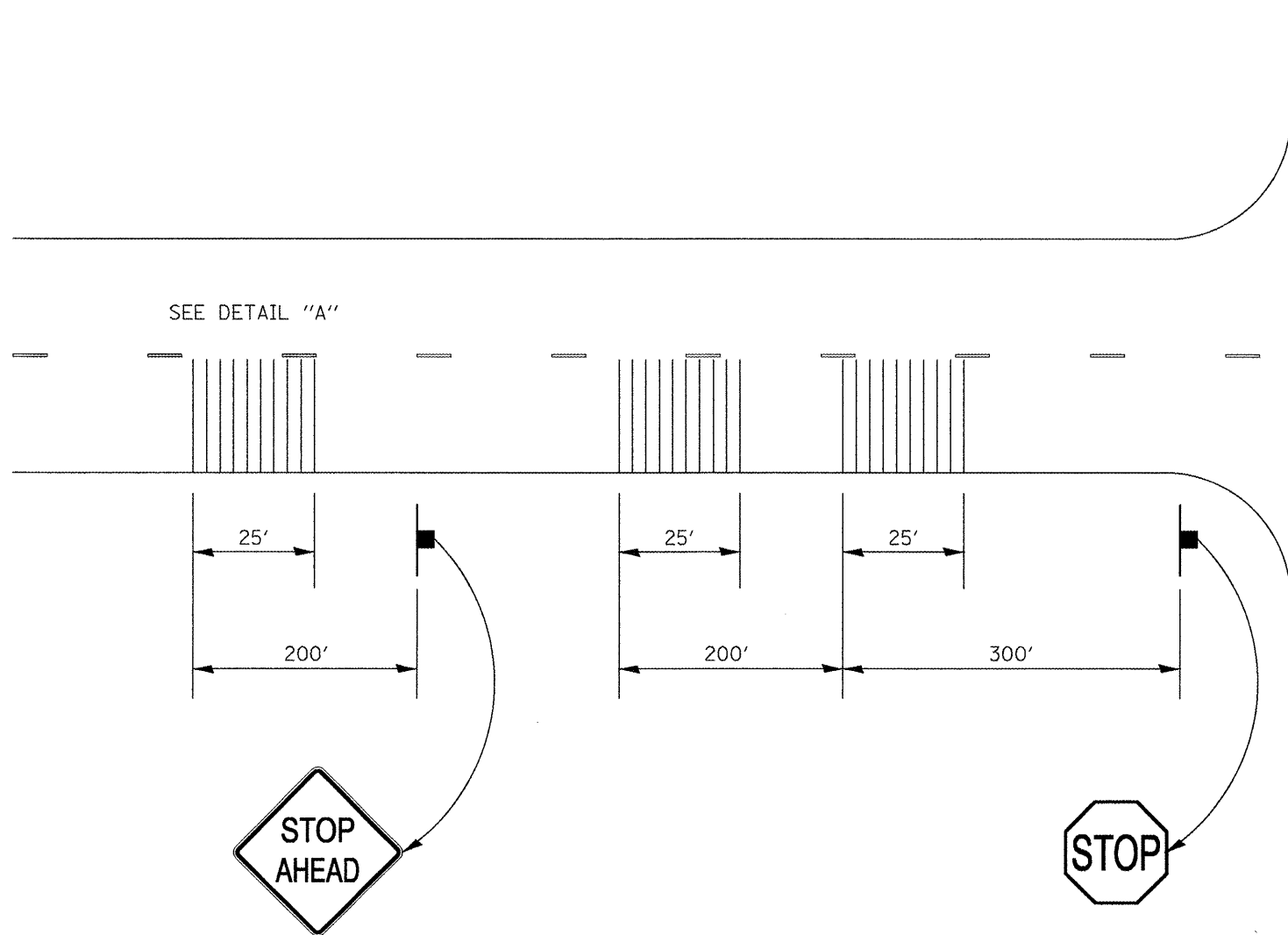
V	W	L	
		Steel Post	Wood Post
0 - 18 (0 - 460)	24 (610)	21 (530)	23 (580)
>18 - 41.5 (>460 - 825)	12 (305)	8 (203)	10 (250)
>41.5 - 53.5 (>825 - 1.13 m)	12 - 0 (305 - 0)	8 (203)	10 (250)



CABLE ASSEMBLY

(18,100 kg (40,000 lbs.) min. breaking strength)
Tighten to taut tension.

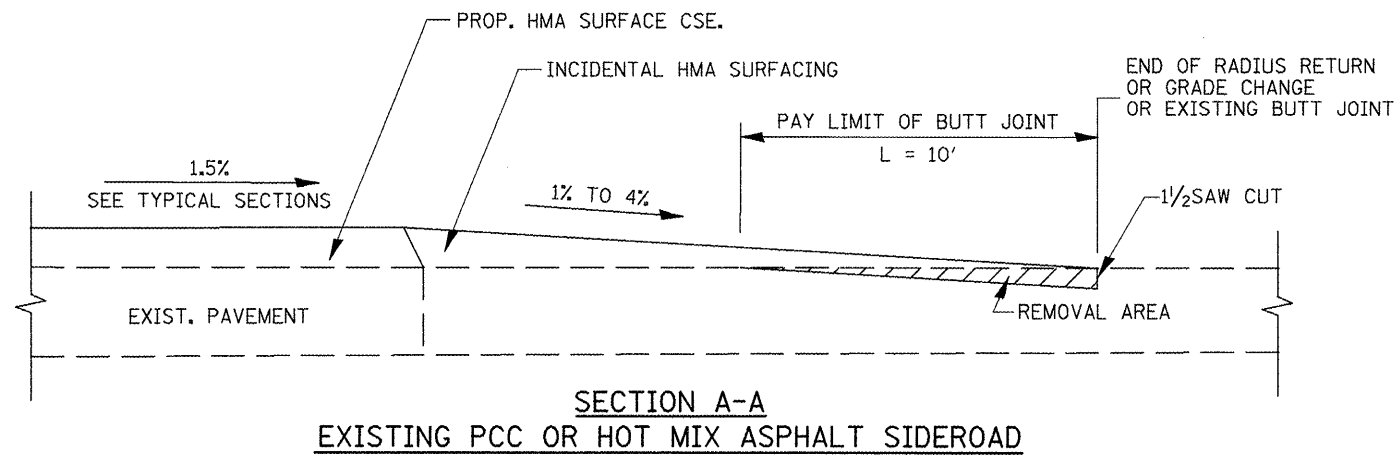
All dimensions are in inches (millimeters) unless otherwise noted.



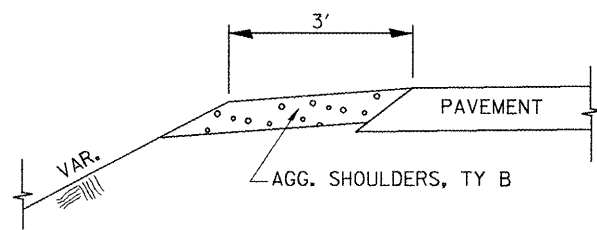
NOTES:

1. RUMBLE STRIPS ARE TO BE GROOVED IN THE PAVEMENT AFTER PLACEMENT OF HMA SURFACE COURSE.
2. ALL LABOR AND EQUIPMENT NECESSARY TO PERFORM THE WORK SHALL BE INCLUDED IN THE CONTRACT UNIT PRICE PER SQUARE FOOT FOR RUMBLE STRIPS.

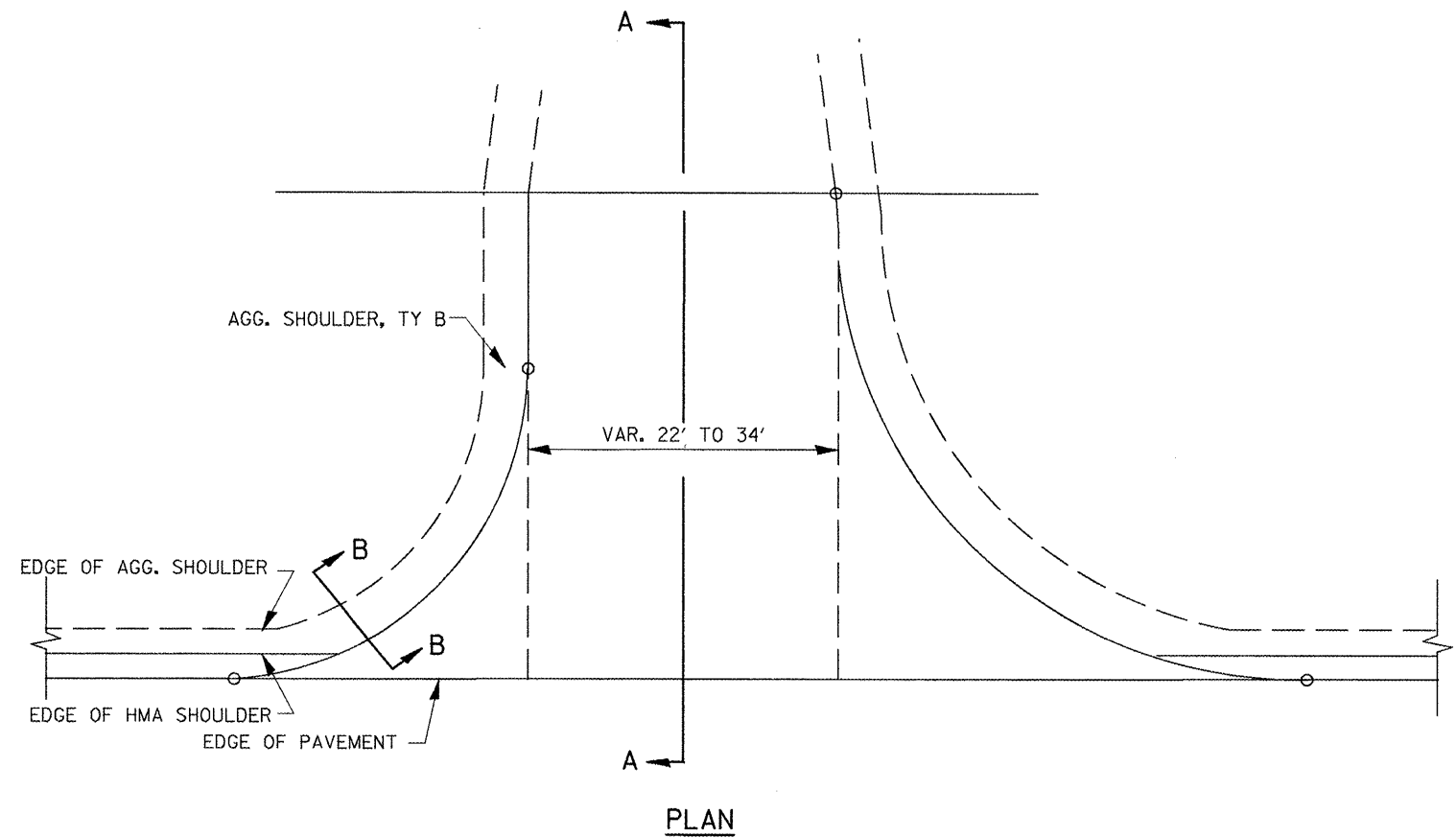
FILE NAME = 68961 - Phase II.dgn	USER NAME = johnsontv	DESIGNED -	REVISED -	STATE OF ILLINOIS DEPARTMENT OF TRANSPORTATION	RUMBLE STRIP DETAIL	F.A.S. RTE.	SECTION	COUNTY	TOTAL SHEETS	SHEET NO.
	PLOT SCALE = 100.0000' / IN.	DRAWN -	REVISED -			1388	Z-[10-15D]RS-7p[1V,E,2,4]RS-4]	PEORIA	32	23
	PLOT DATE = 3/18/2010	CHECKED -	REVISED -			CONTRACT NO. 68961				
	DATE -	REVISED -		NOT TO SCALE	SHEET NO. 1 OF 1 SHEETS	STA.	TO STA.	ILLINOIS FED. AID PROJECT		



SECTION A-A
EXISTING PCC OR HOT MIX ASPHALT SIDEROAD



SECTION B-B
SIDEROAD SHOULDER TREATMENT



PLAN

FILE NAME =
68961 - Phase II.dgn

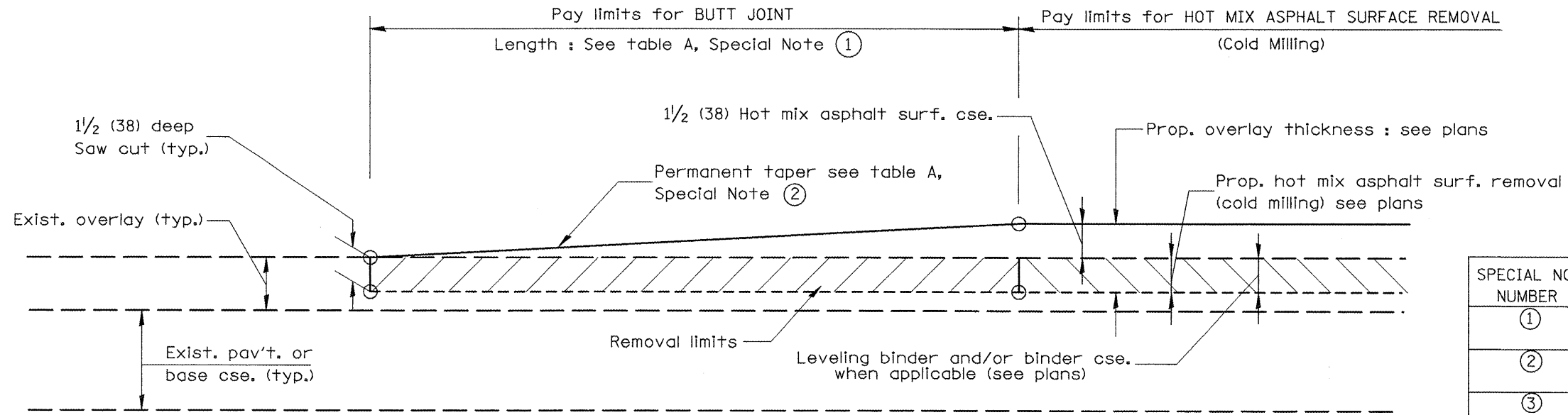
USER NAME = johnsonv
DESIGNED -
DRAWN -
PLOT SCALE = 100.0000' / IN.
CHECKED -
PLOT DATE = 3/18/2010
DATE -

REVISD -
REVISD -
REVISD -
REVISD -

STATE OF ILLINOIS
DEPARTMENT OF TRANSPORTATION

SIDE ROAD TREATMENT DETAIL
NOT TO SCALE SHEET NO. 1 OF 1 SHEETS STA. TO STA.

F.A.S. RTE.	SECTION	COUNTY	TOTAL SHEETS	SHEET NO.
1388	Z-(D-15D)RS-7(1V,E,2,4)RS-4	PEORIA	32	24
CONTRACT NO. 68961			ILLINOIS FED. AID PROJECT	



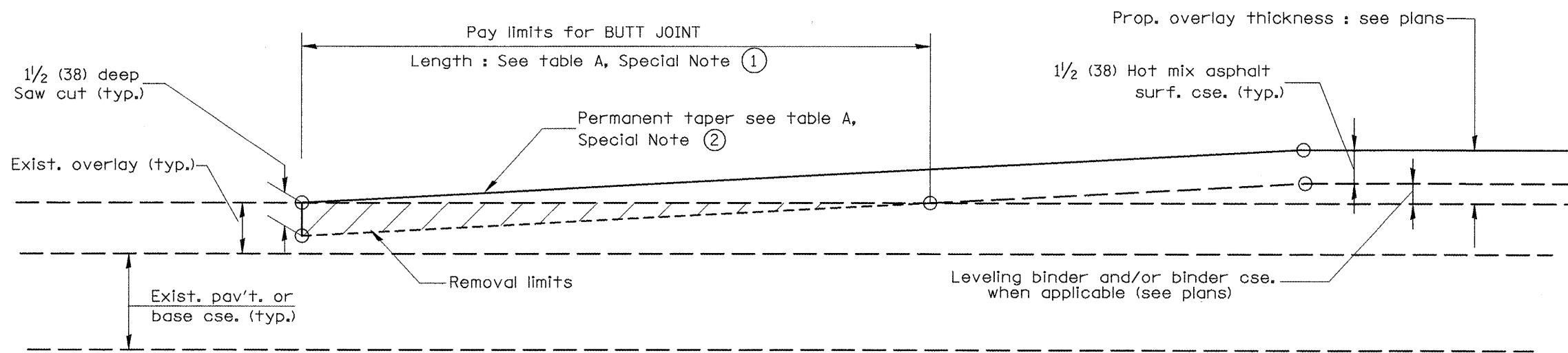
CASE 1 : WITH HOT MIX ASPHALT SURFACE REMOVAL (COLD MILLING)

TABLE A
(LENGTHS AND TAPER RATES)

SPECIAL NOTE NUMBER	ELEMENT	MAINLINE INTERSTATES & 4-LANE EXPRESSWAYS	ALL OTHERS
①	LENGTH OF BUTT JOINT	60'(18.0 m)	30'(9.0 m)
②	PERMANENT TAPER RATE	1:480	1:240
③	TEMPORARY RAMP TAPER RATE	1:80	1:40
④	TEMPORARY RAMP LENGTH	10'(3.0 m)	5'(1.5 m)
⑤	LENGTH OF BUTT JOINT	10'(3.0 m)	10'(3.0 m)

GENERAL NOTES

1. The work shall be done in accordance with Article 406.08 and the Special Provision for Butt Joints.
2. The pavement surface to be removed may be either bituminous or P.C. concrete. The work shall be performed in accordance with Article 440.04 and the Special Provisions for Butt Joints.
3. The saw cut joints shall be primed just prior to the placing of bituminous material. The work will be in accordance with the applicable portions of Article 406.05.



CASE 2 : NO HOT MIX ASPHALT SURFACE REMOVAL (COLD MILLING)

All dimensions are in inches (millimeters) unless otherwise noted.

01-01-97	RENUM. C-23.01, NEW REVISION BOX	T.P.
04-01-97	CORRECTION TO DEPTH	J.A.
09-15-05	REVISED DESIGNER NOTE	M.M.A.
10-16-06	REVISED TO 2007 SPEC.	M.A.

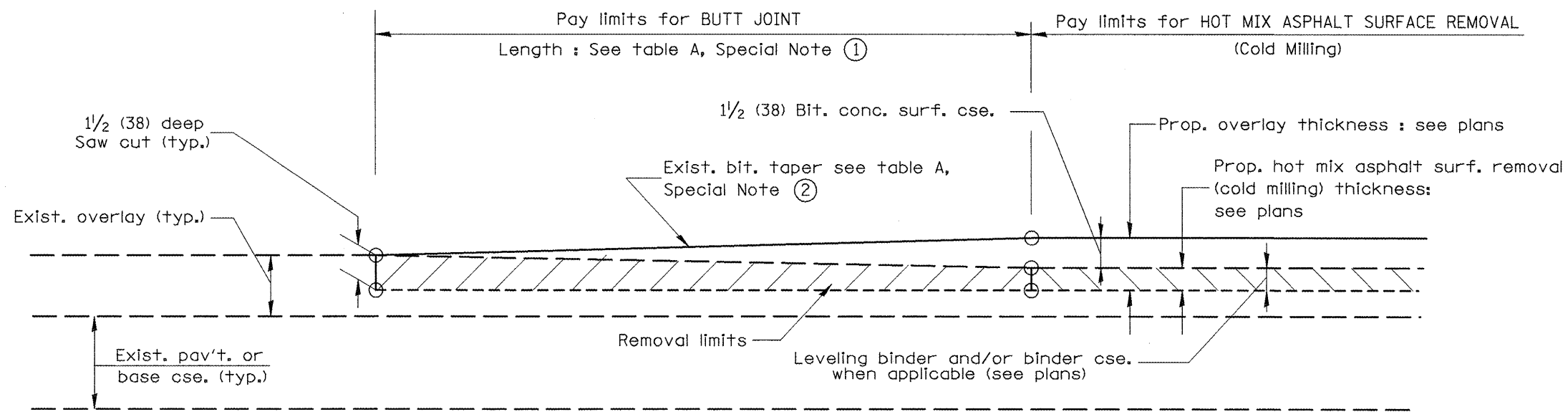
STATE OF ILLINOIS
DEPARTMENT OF TRANSPORTATION

BUTT JOINTS

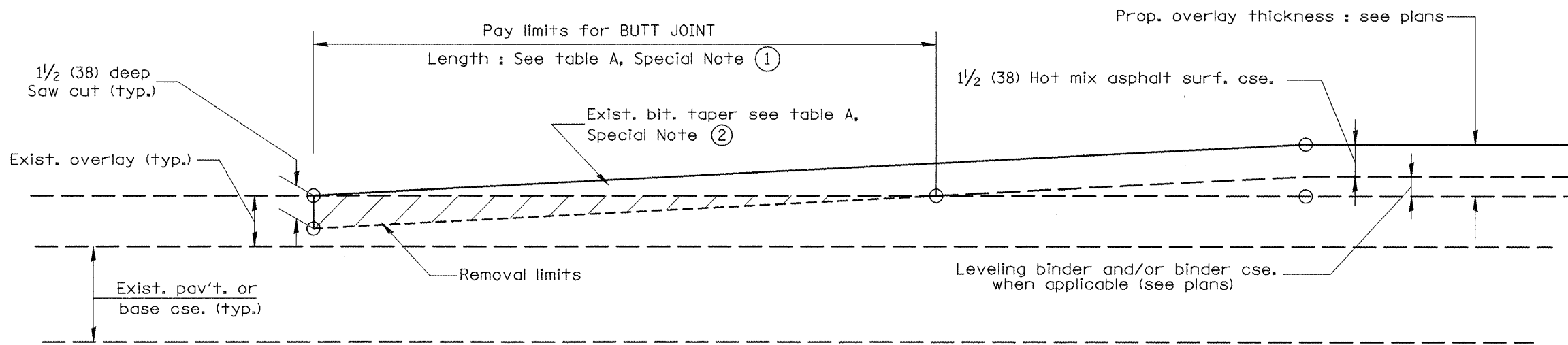
NOT TO SCALE

SHT. 1 OF 3
CADD STD. 406101-D4

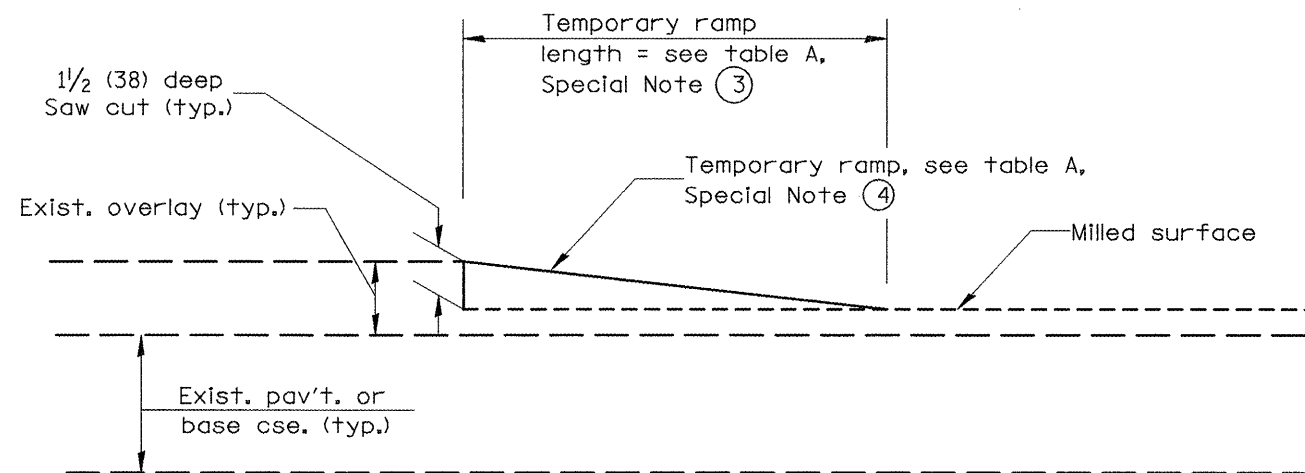
F.A.S. RTE.	SECTION	COUNTY	TOTAL SHEETS	SHEET NO.
1388	Z-(10-15D)RS-74(1V,E,2,4)RS-43	PEORIA	32	25
FED. ROAD DIST. NO. [ILLINOIS] FED. AID PROJECT			CONTRACT NO. 68961	



**CASE 3 : WITH HOT MIX ASPHALT SURFACE REMOVAL (COLD MILLING)
TIE-IN TO EXISTING BITUMINOUS TAPER**



**CASE 4 : NO HOT MIX ASPHALT SURFACE REMOVAL (COLD MILLING)
TIE-IN TO EXISTING BITUMINOUS TAPER**



DETAIL TEMPORARY RAMP

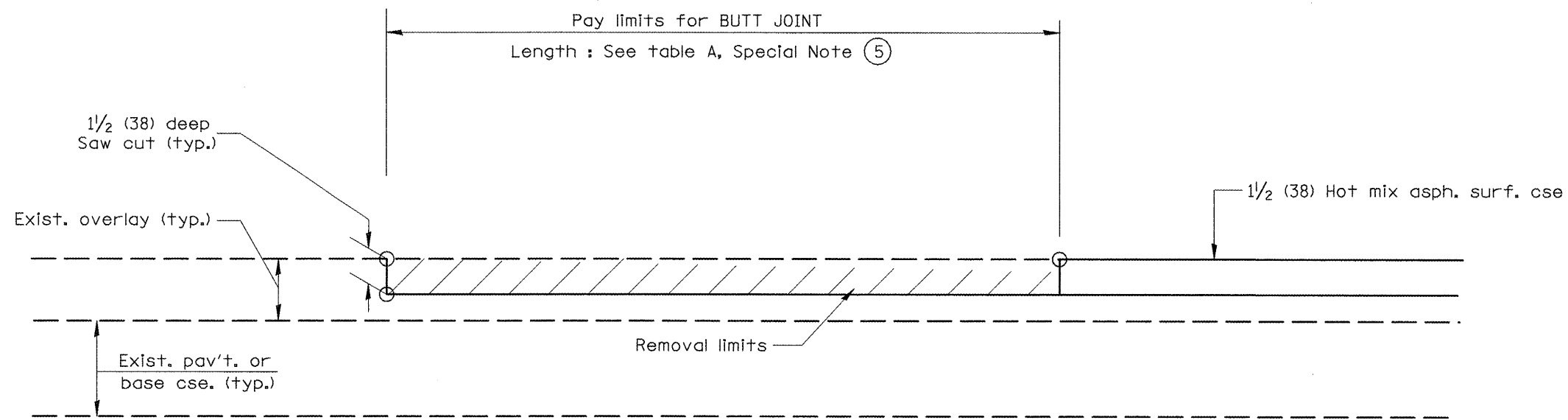
All dimensions are in inches (millimeters) unless otherwise noted.

--	--	--	--	--	--	--	--	--	--

**STATE OF ILLINOIS
DEPARTMENT OF TRANSPORTATION**

BUTT JOINTS
NOT TO SCALE
SHT. 2 OF 3
CADD STD. 406101-D4

F.A.S. RTE.	SECTION	COUNTY	TOTAL SHEETS	SHEET NO.
1388	Z-[D-15DIRS-7+1V,E,2,4]RS-4]	PEORIA	32	26
FED. ROAD DIST. NO. ILLINOIS FED. AID PROJECT			CONTRACT NO. 68961	



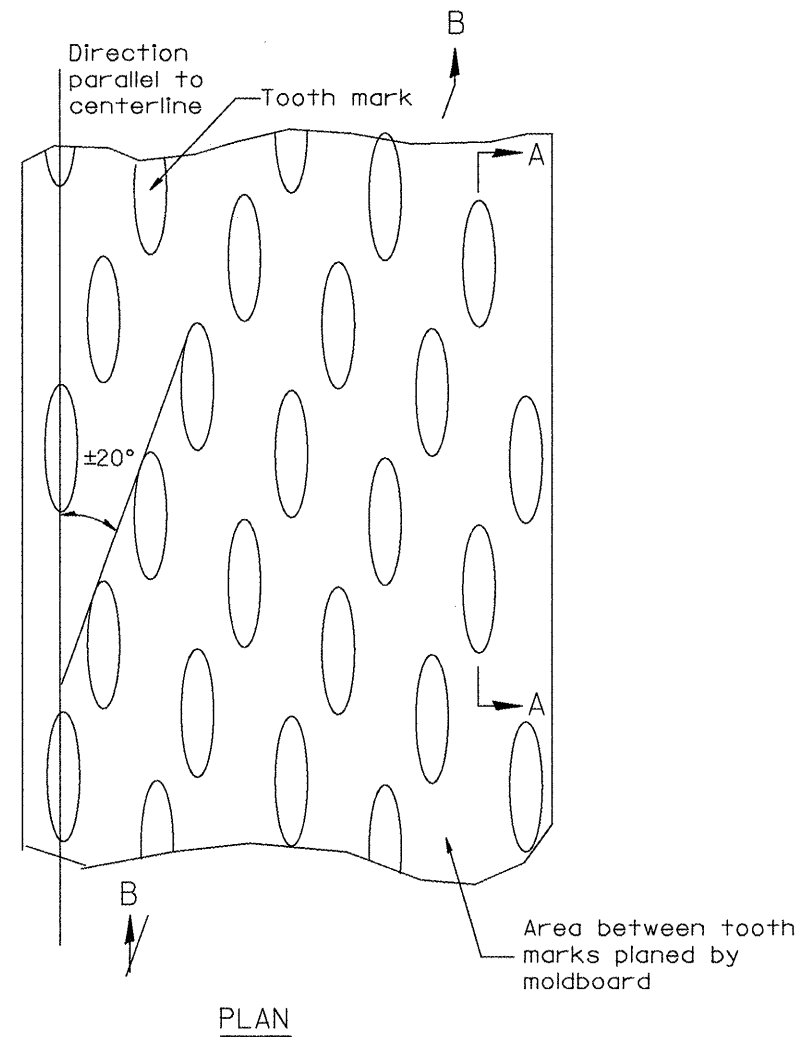
**CASE 5 : WITH HOT MIX ASPHALT SURFACE REMOVAL (COLD MILLING)
TIE-IN TO EXISTING BITUMINOUS TAPER**

All dimensions are in inches (millimeters) unless otherwise noted.

**STATE OF ILLINOIS
DEPARTMENT OF TRANSPORTATION**

BUTT JOINTS
SHT. 3 OF 3
CADD STD. 406101-D4
NOT TO SCALE

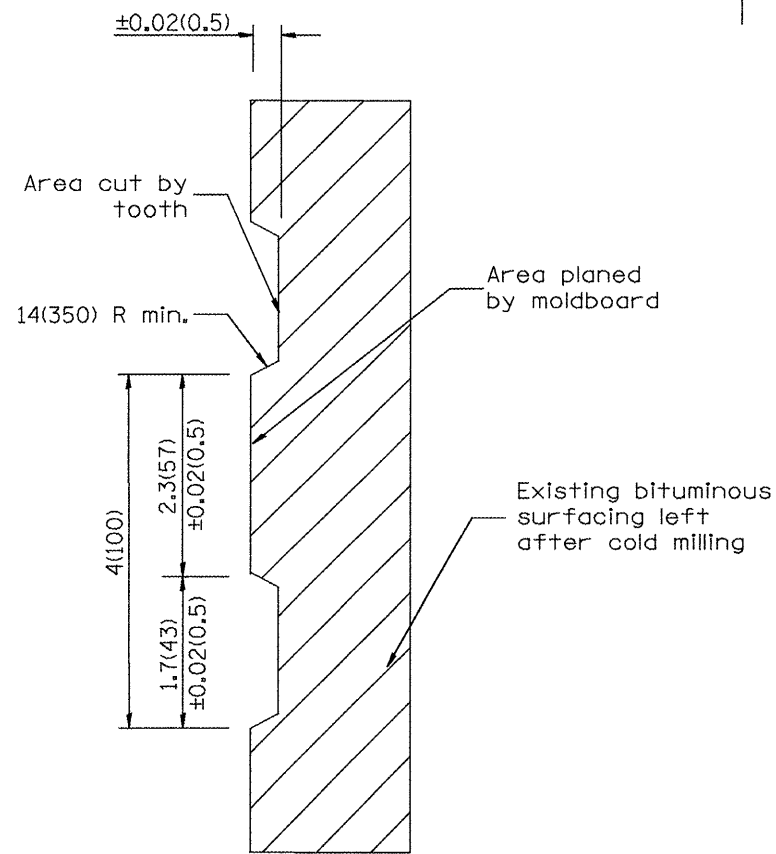
F.A.S. RTE.	SECTION	COUNTY	TOTAL SHEETS	SHEET NO.
1388	Z-[D-15D]RS-7(1V,E,2,4)RS-4]	PEORIA	32	27
FED. ROAD DIST. NO. ILLINOIS FED. AID PROJECT			CONTRACT NO. 68961	



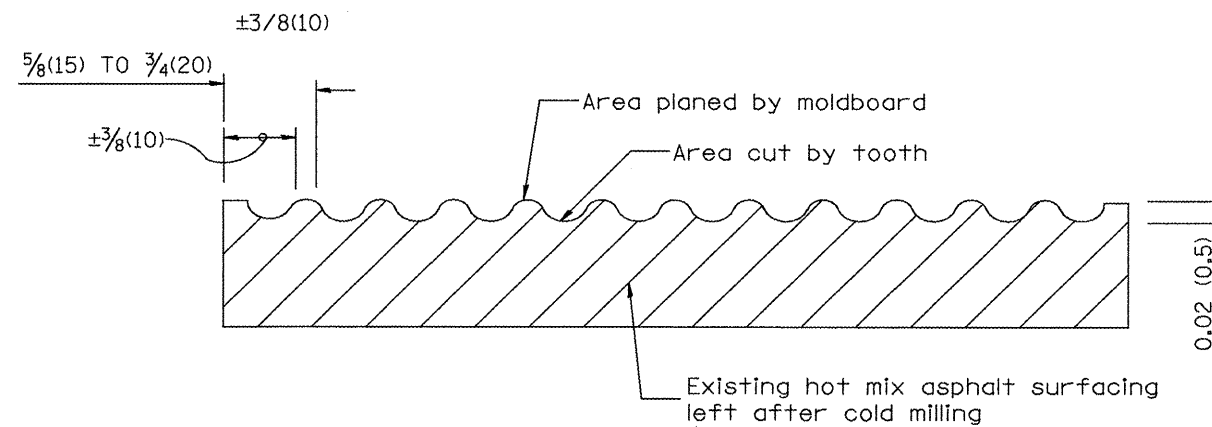
PLAN

General notes:

1. Coldmilling shall consist of two processes: Cutting with carbide teeth mounted on a rotating drum, and planing with a moldboard mounted immediately behind the cutting drum.
2. Other similar patterns will be acceptable if they consist of a smooth, flat, planed surface interspersed with a pattern of discontinuous longitudinal striations.



SECTION A-A



SECTION B-B PROJECTED
PERPENDICULAR TO CENTERLINE

All dimensions are in inches (millimeters) unless otherwise noted.

01-01-97	RENUM. C-104.01. NEW REVISION BOX	T.P.
04-20-98	REMOVED MILLING DETAIL FROM STANDARD	J.A.
09-08-98	CORRECT NOTE LEADER PLACEMENT	R.W.
10-16-06	REVISED TO 2007 SPEC.	M.A.

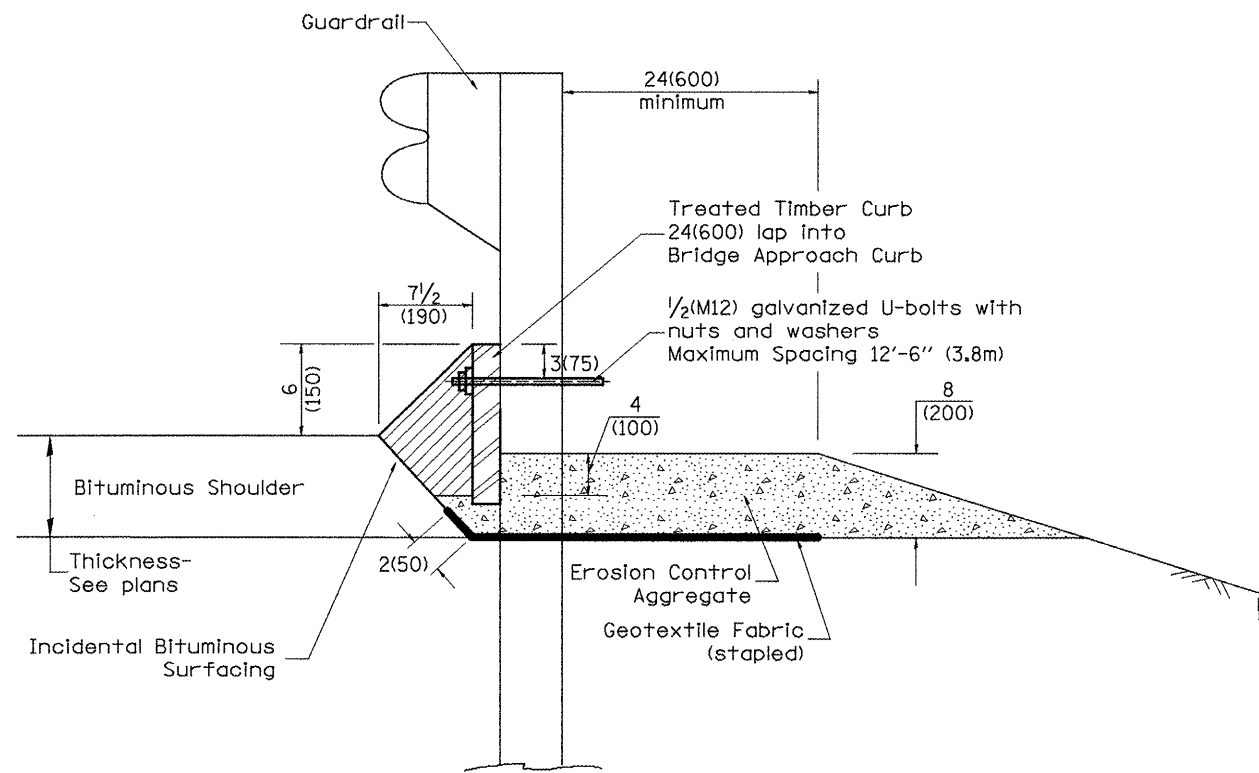
STATE OF ILLINOIS
DEPARTMENT OF TRANSPORTATION

HOT MIX ASPHALT SURFACE REMOVAL (COLD MILLING)

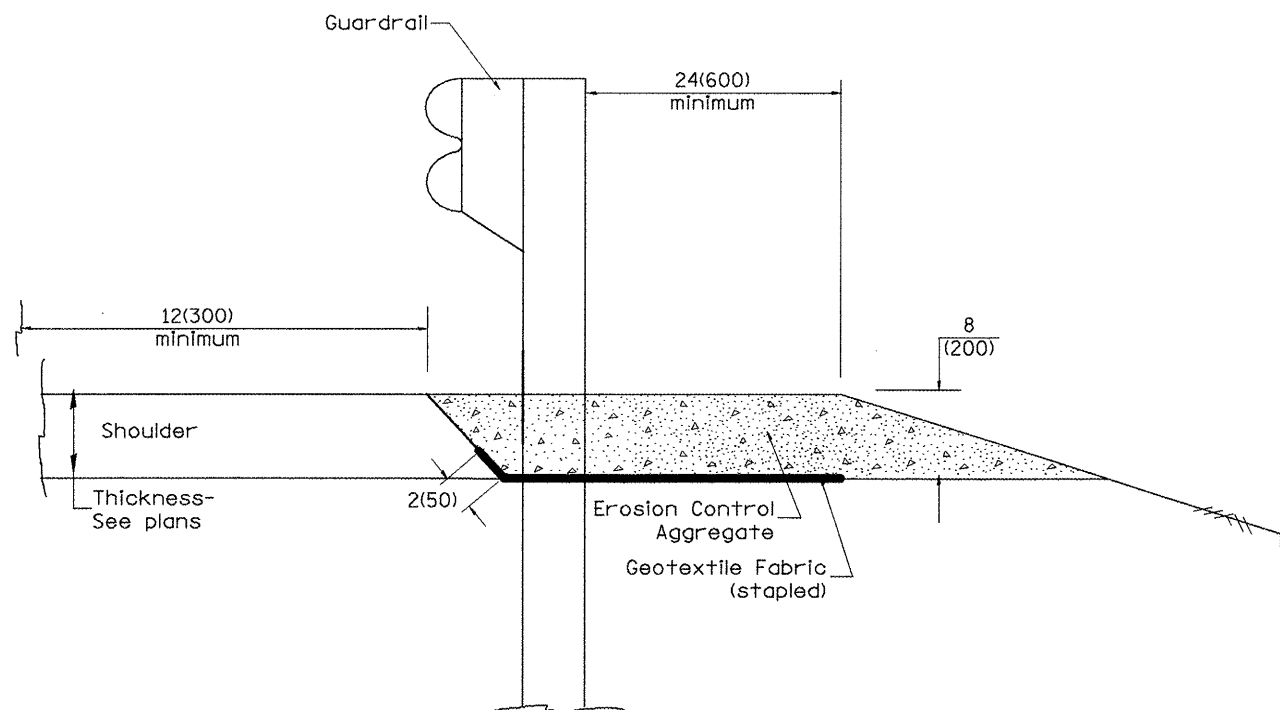
NOT TO SCALE

CADD STD. 440001-D4

F.A.S. RTE.	SECTION	COUNTY	TOTAL SHEETS	SHEET NO.
1388	Z-(10-15)RS-7s(1V,E,2,4)RS-4	PEORIA	32	28
FED. ROAD DIST. NO. ILLINOIS FED. AID PROJECT			CONTRACT NO. 68961	



TYPICAL SECTION WITH EROSION CONTROL CURB



TYPICAL SECTION WITHOUT EROSION CONTROL CURB

GENERAL NOTES: EROSION CONTROL CURB

1. This work shall consist of grading as needed, installing hardware and treated timber boards, furnishing and placing mastic material and incidental bituminous surfacing in front of Steel Plate Beam Guardrail in accordance with Plan Details.
2. Timber shall be treated in accordance with Article 1007.12. All preservatives specified in the article will be allowed. Waterborne preservatives "asa" and "cca" shall have a minimum retention of 0.40 lbs./cu. ft. (6.4 kg/m³)

GENERAL NOTES: GUARDRAIL AGGREGATE EROSION CONTROL

1. This work shall consist of grading as needed, furnishing and installing geotextile fabric and staples, and furnishing, placing and shaping crushed aggregate around and behind Steel Plate Beam Guardrail posts in accordance with Plan Details.
2. Before placing the aggregate and the Geotextile Fabric, weeds and grass shall be removed from the area to be covered.
3. After the area has been prepared, and in a dry condition, the Geotextile fabric shall be placed with a 12(300) minimum overlap. A knife cut for guardrail post installation is necessary.
4. The aggregate shall be deposited, compacted and shaped by either mechanical or hand methods, in a manner reasonably true to line and grade.
5. The Contractor shall have the option of placing the guardrail before or after the Geotextile Fabric and Aggregate are in place. If the guardrail is placed after the Geotextile Fabric and Aggregate, then any voids must be filled and the aggregate returned to line and grade.
6. Materials shall meet the following requirements:
 - A. The crushed aggregate shall be CA1 gradation in accordance with Article 1004.01(c) of the Standard Specifications.
 - B. The Geotextile Fabric shall be nonwoven fabric in accordance with Article 1080.02 of the Standard Specifications.

All dimensions are in inches (millimeters) unless otherwise noted.

01-01-97	RENUM. C-22.01, NEW REVISION BOX	T.P.
03-01-97	CORRECT STD. NUMBERS IN NOTES PG. 2	J.A.
11-03-00	CORRECTION TO NOTES	M.A.
10-16-06	REVISED TO 2007 SPEC.	M.A.

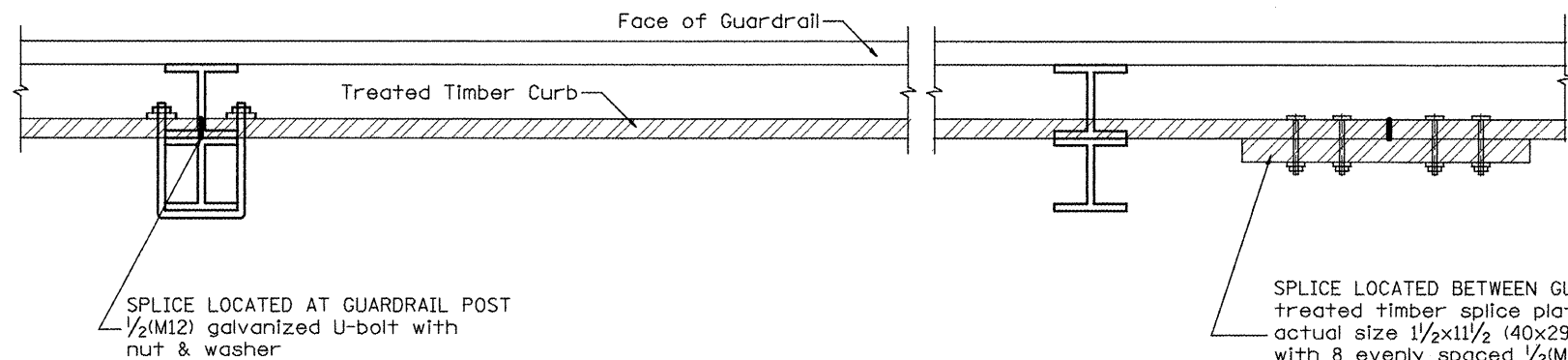
**STATE OF ILLINOIS
DEPARTMENT OF TRANSPORTATION**

GUARDRAIL EROSION CONTROL TREATMENTS

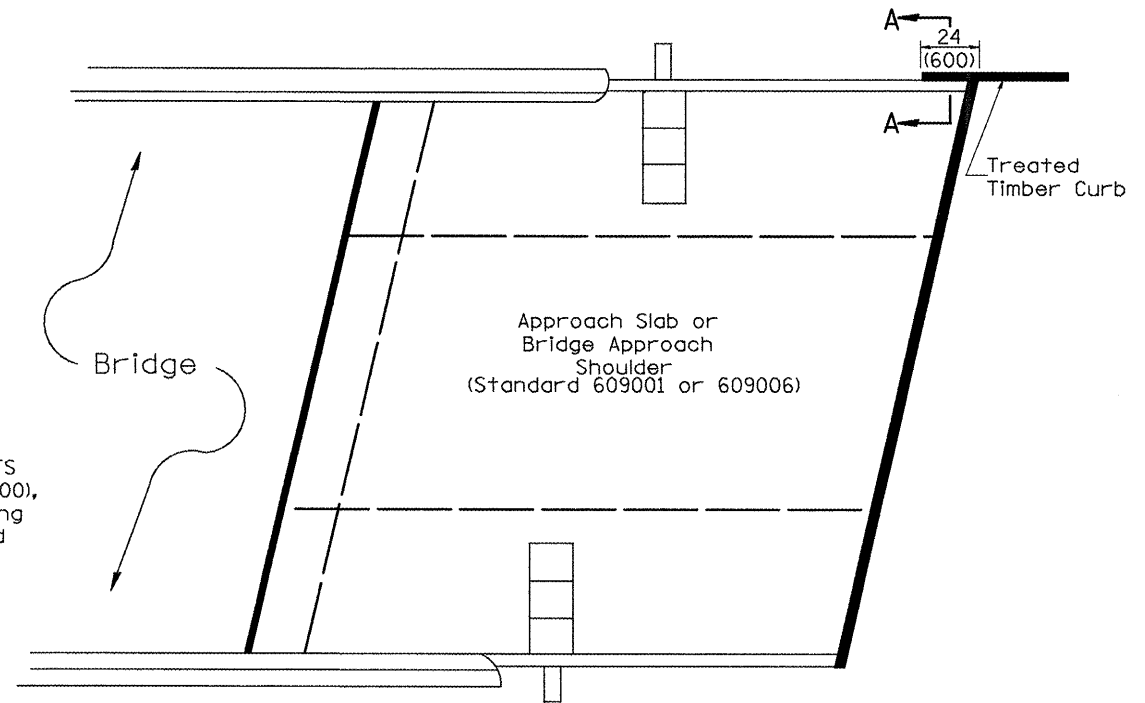
NOT TO SCALE

SHT. 1 OF 2
CADD STD. 630101-D4

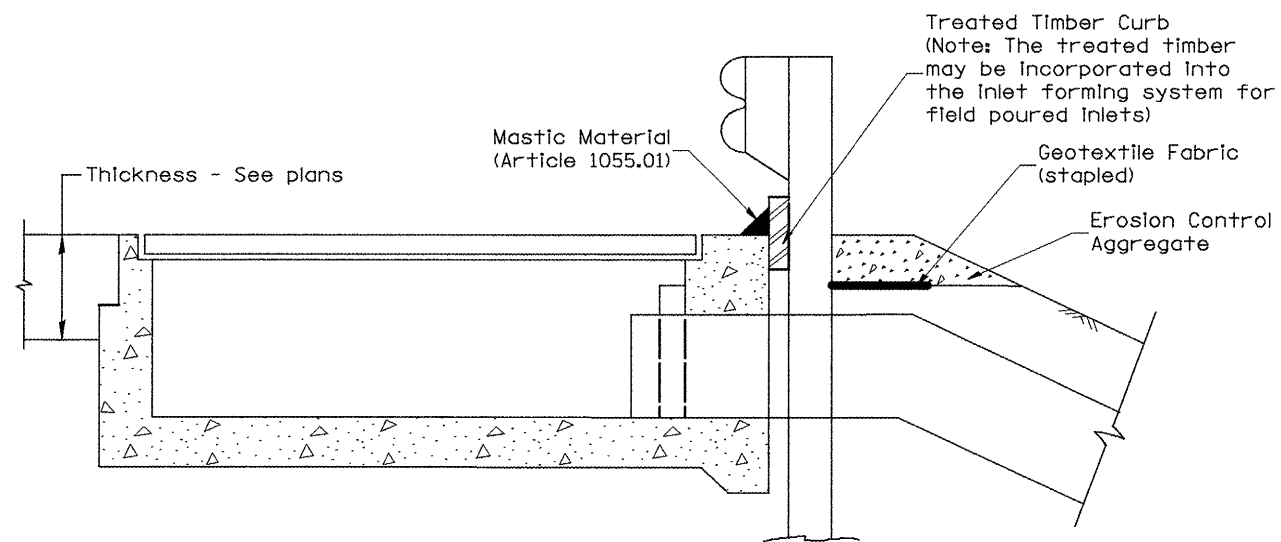
F.A.S. RTE.	SECTION	COUNTY	TOTAL SHEETS	SHEET NO.
1388	Z-(10-15D)RS-7(1V,E,2,4)RS-43	PEORIA	32	29
FED. ROAD DIST. NO. ILLINOIS FED. AID PROJECT			CONTRACT NO. 68961	



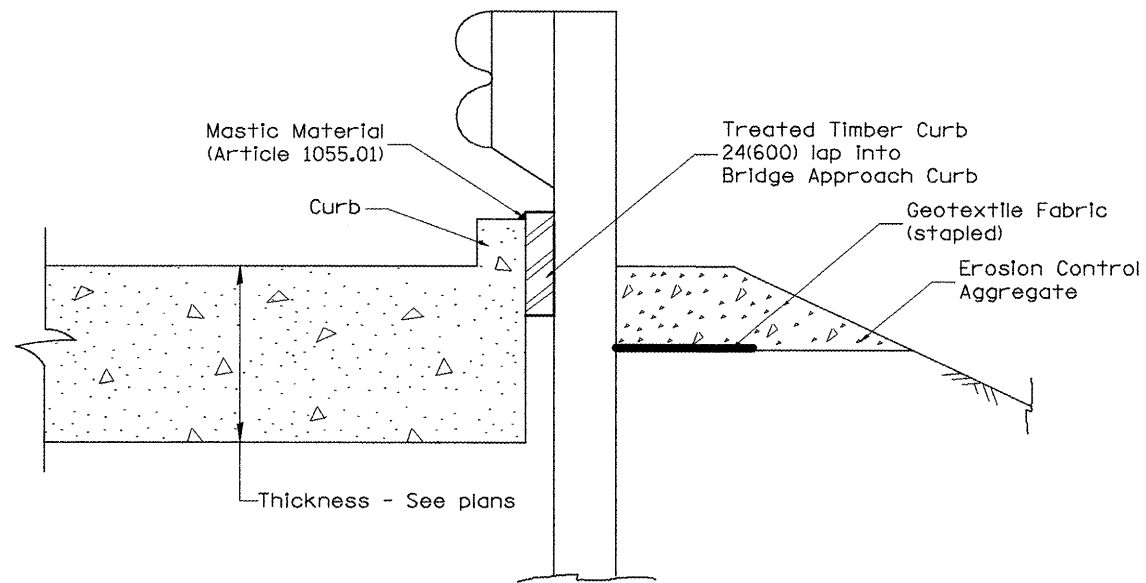
DETAIL A
(Typical Treated Timber Splices)



PLAN VIEW
APPROACH SLAB OR BRIDGE APPROACH SHOULDER
(STANDARD 609001 or 609006)



TYPICAL SECTION WITH EROSION CONTROL CURB
AT INLETS TYPE E & F (STANDARD 610001)



SECTION A-A
TYPICAL SECTION WITH EROSION CONTROL CURB
AT BRIDGE APPROACH CURB
(STANDARD 609001 OR 609006)

All dimensions are in inches (millimeters) unless otherwise noted.

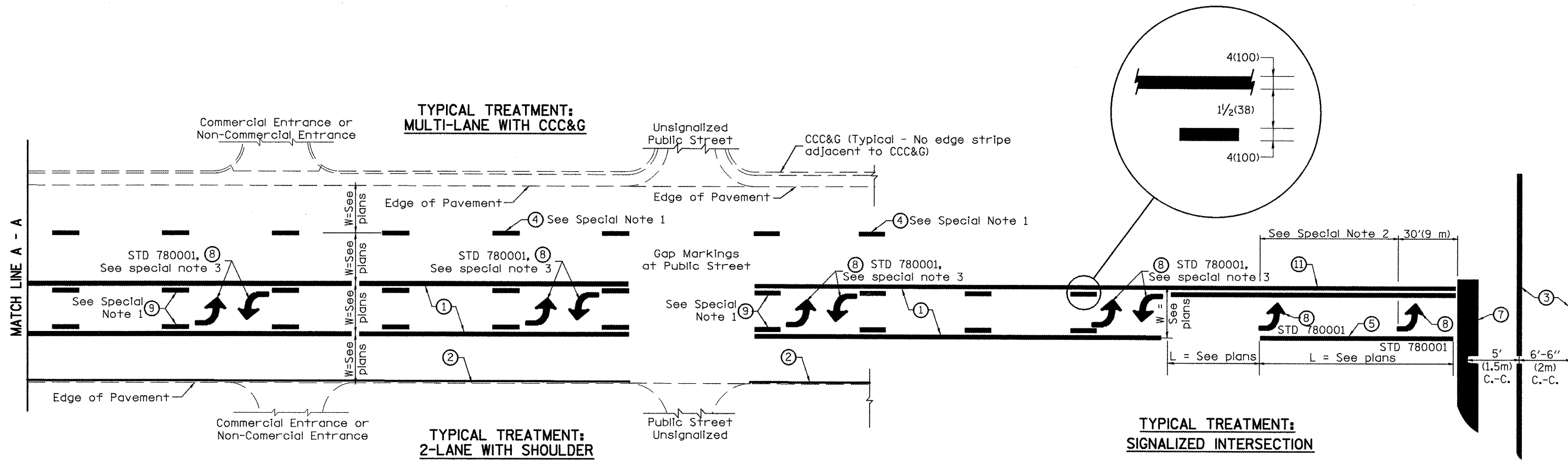
STATE OF ILLINOIS
DEPARTMENT OF TRANSPORTATION

GUARDRAIL EROSION CONTROL TREATMENTS

NOT TO SCALE

SHT. 2 OF 2
CADD STD. 630101-D4

F.A.S. RTE.	SECTION	COUNTY	TOTAL SHEETS	SHEET NO.
1388	Z-CD-15D/RS-7(I,V,E,2,4)RS-4	PEORIA	32	30
FED. ROAD DIST. NO. ILLINOIS FED. AID PROJECT			CONTRACT NO. 68961	



**FLUSH PAVED MEDIAN: TWO-WAY LEFT TURN LANE
WITH ONE-WAY LEFT TURN LANE AT SIGNALIZED INTERSECTION**

TYPICAL PAVEMENT MARKING LEGEND

(Note: This is a District Standard Legend. Some elements may not apply to specific project.)

- ① 4(100) Solid (Yellow)
- ② 4(100) Solid (White)
- ③ 2-6(150) Crosswalk @ 6'-6" (2m)min C.-C. (White)
2-8(200) Crosswalk @ 6'-6" (2m)min C.-C. (White) (When traffic signals are present.)
- ④ 6(150) Skip-Dash (White) (See Special Note 1)
- ⑤ 8(200) Solid (White)
- ⑥ 12(300) Diagonal (White) (Item ⑥ is shown on Std. 780001)
- ⑦ 24(600) Stop Bar (White)
- ⑧ Letters & Arrows (See Std. 780001 and Special Notes 2 & 3)
- ⑨ 4(100) Skip-Dash (Yellow) (See Special Note 1)
- ⑩ 12(300) Diagonal (Yellow) (See Table A)
- ⑪ 4(100) Double Solid (Yellow) (See Table A)

SPECIAL NOTES

1. Skip-Dash markings will be centered between both ends of city blocks and shall be placed in alignment transversely across the pavement.
2. The following shall apply to arrows located in one-way left turn lanes:
 - A. A minimum of two (2) arrows is required.
 - B. The maximum spacing between arrows is 80' (24 m).
 - C. Arrows shall be evenly spaced if three (3) or more are required.
3. The following shall apply to arrow pairs located in two-way left turn lanes:
 - A. A minimum of two (2) arrow pairs is required.
 - B. The maximum spacing between arrow pairs is 200' (61 m).
 - C. Arrow pairs shall be evenly spaced if three (3) or more are required.
 - D. The spacing between BI Directional Left Turn Arrows is 33' (10 m).

GENERAL NOTES

1. Refer to State Standard 780001 for additional Pavement Markings including letters & arrows.
2. See Plans for Pavement Markings adjacent to curbed Islands and medians, and through lane reductions.

01-01-97	RENUM. F-8.03, NEW REVISION BOX	T.P.	10-16-06	REVISED TO 2007 SPEC.
02-07-97	ADD BI DIRECTIONAL DIMENSION	J.A.		
10-97	CORRECT BI DIRECTIONAL DIMENSION	J.A.		
08-02	ADD CROSSWALK DMNS. WITH T.S.	M.A.		

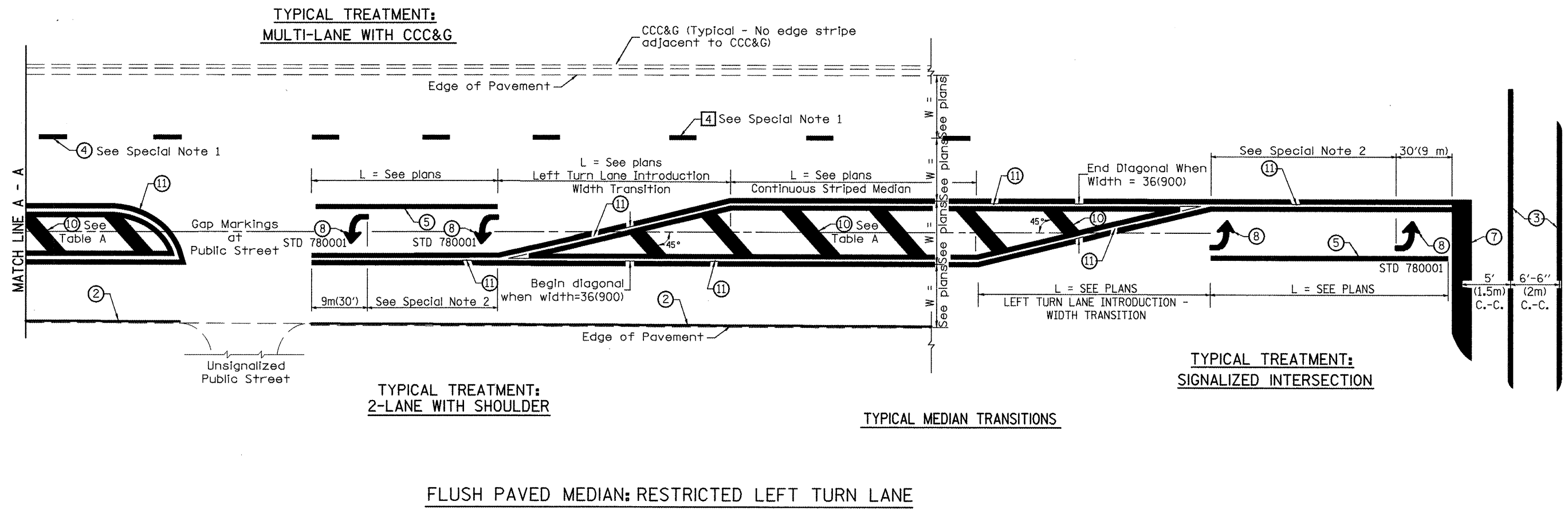
**STATE OF ILLINOIS
DEPARTMENT OF TRANSPORTATION**

TYPICAL PAVEMENT MARKINGS

NOT TO SCALE

F.A.S. RTE.	SECTION	COUNTY	TOTAL SHEETS	SHEET NO.
1388	Z-(D-15)RS-7(IV,E,2,4)RS-43	PEORIA	32	31
FED. ROAD DIST. NO. ILLINOIS FED. AID PROJECT			CONTRACT NO. 68961	

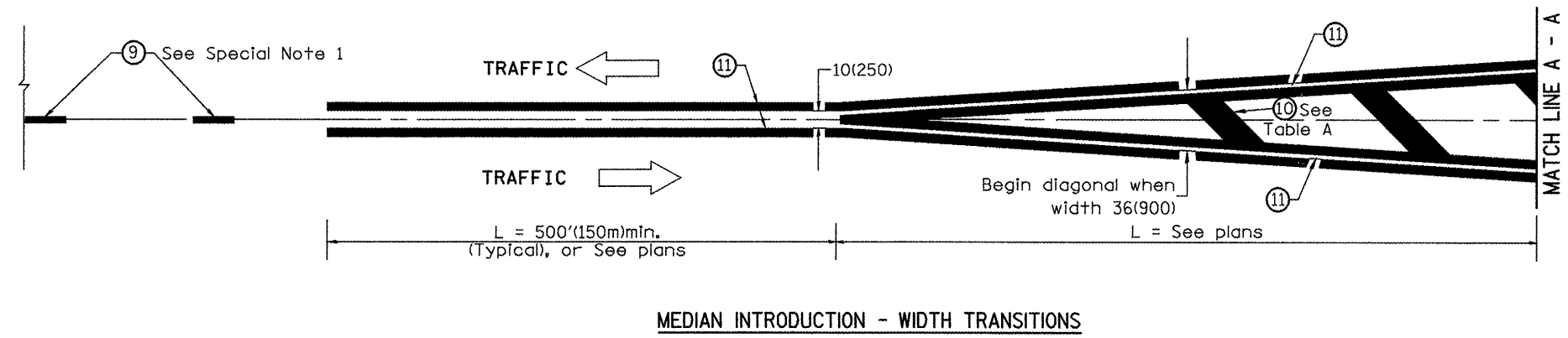
SHT. 1 OF 2
CADD STD. 780001-D4



FLUSH PAVED MEDIAN: RESTRICTED LEFT TURN LANE

TABLE A
RECOMMENDED SPACING BETWEEN DIAGONAL LINES

SPEED LIMIT RANGE	INTERSECTION CHANNELIZATION (Includes Width Transitions for Median and Left Turn Lane Introductions)	
	CONTINUOUS	
Less Than 30 mph (50 km/h)	50' (15m)	15' (5m)
30 - 45 mph (50 - 70 km/h)	75' (23m)	20' (6m)
Over 45 mph (70 km/h)	150' (46m)	30' (9m)



All dimensions are in inches (millimeters) unless otherwise noted.