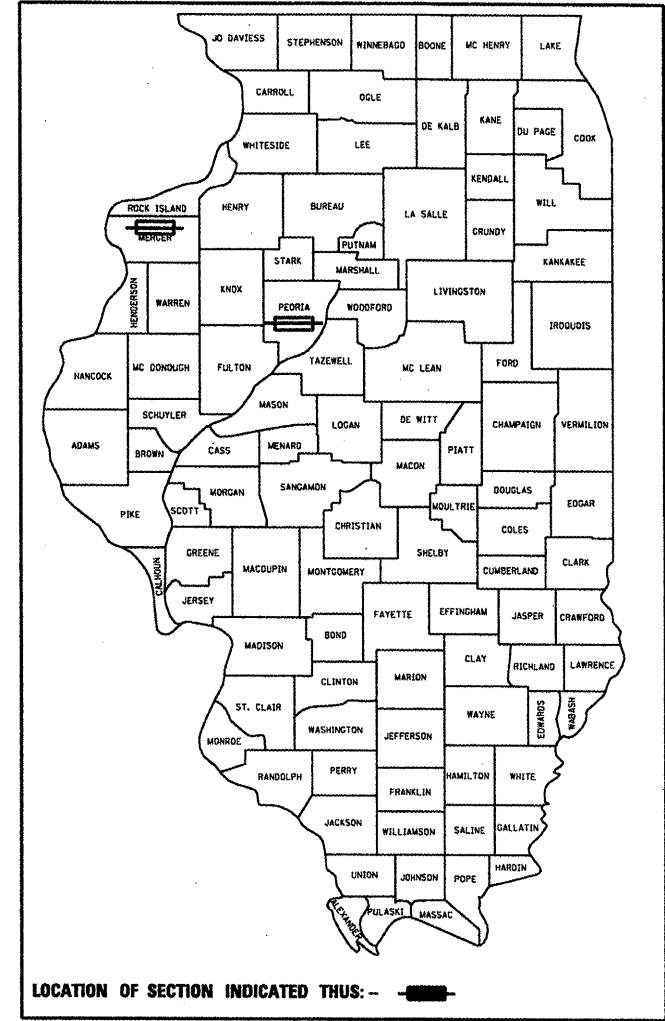


F.A. RTE.	SECTION	COUNTY	TOTAL SHEETS	SHEET NO.
FAP 317 & FAS 220	(45-VHB-1)I-1,2;(23BR)I-1	Mercer & Peoria	16	1
ILLINOIS			CONTRACT NO. 68975	

C-94-095-10



STATE OF ILLINOIS

DEPARTMENT OF TRANSPORTATION

DIVISION OF HIGHWAYS

PROPOSED  
HIGHWAY PLANS

ROUTE FAP 317(US 24) & FAS 220 (IL 17/94)  
SECTION (45-VHB-1)I-1,2;(23BR)I-1  
TYPE of IMPROVEMENT Bridge Painting  
Mercer and Peoria COUNTY

C-94-095-10

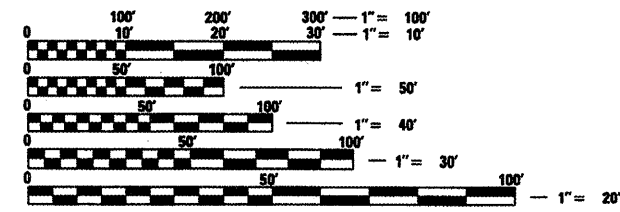
FOR INDEX OF SHEETS, SEE SHEET NO.

- 1 COVER SHEET
- 2 & 3 SUMMARY OF QUANTITIES
- 4 COMMITMENT SHEET/GENERAL NOTES
- 5-16 PLAN SHEETS

TRAFFIC STANDARDS

- 701101-02
- 701106-02
- 701201-03
- 701901-01
- 701316-04
- BLR 21-8

LOCATION 1  
ADT 3,400 TRUCK 100  
LOCATION 2 & 3  
ADT 450 TRUCK 10

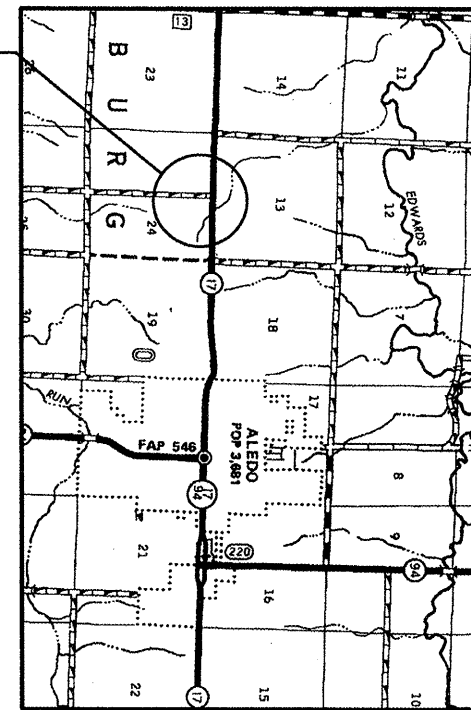


FULL SIZE PLANS HAVE BEEN PREPARED USING STANDARD ENGINEERING SCALES. REDUCED SIZED PLANS WILL NOT CONFORM TO STANDARD SCALES. IN MAKING MEASUREMENTS ON REDUCED PLANS, THE ABOVE SCALES MAY BE USED.

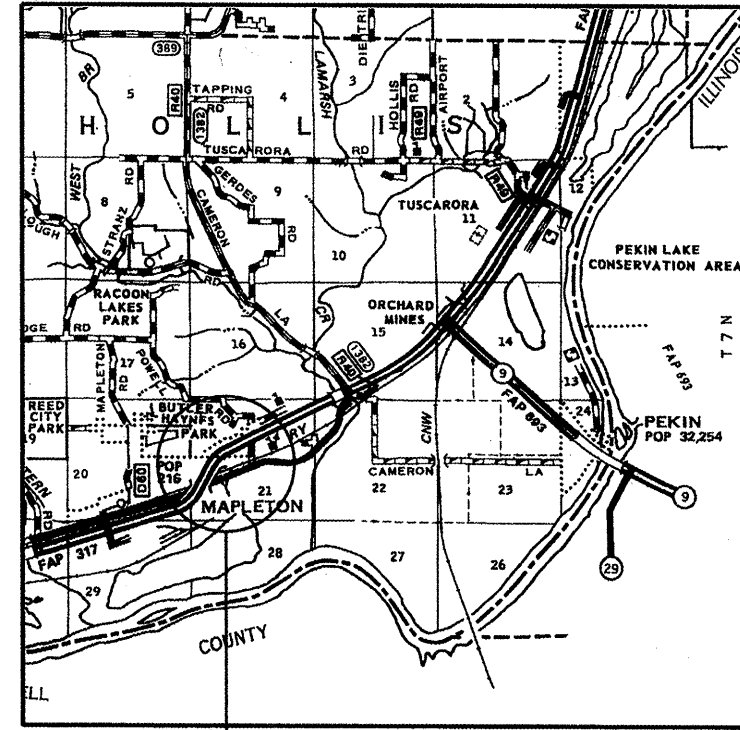
J.U.L.I.E.  
JOINT UTILITY LOCATION INFORMATION FOR EXCAVATION  
1-800-892-0123  
OR 811

PROJECT ENGINEER JIM MILLER  
PROJECT DESIGNER TOM INGLIS (309) 671-3481  
CATALOG NO. 034445-00D  
CONTRACT NO. 68975

Location 1  
Structure No. 066-0008



Location 2 & 3  
Structure No. 072-0135  
Structure No. 072-0009



STATE OF ILLINOIS  
DEPARTMENT OF TRANSPORTATION  
DIVISION OF HIGHWAYS

SUBMITTED 3/26/10  
*[Signature]*  
DEPUTY DIRECTOR OF HIGHWAYS, REGION ENGINEER

May 7 2010  
*Scott E. Stitt P.E.*  
acting ENGINEER OF DESIGN AND ENVIRONMENT

May 7 2010  
*Christine M. Reed*  
DIRECTOR OF HIGHWAYS, CHIEF ENGINEER

PRINTED BY THE AUTHORITY  
OF THE STATE OF ILLINOIS

# Summary of Quantities

Code Order

ROUTE		SECTION	COUNTY	SHEET	
FAP	317	(45-VHB-1)I-1,2;(23-BR)I-1	PEORIA	TOTAL	NO.
US	24		MERCER	16	2
CONTRACT NO.				68975	

## CONSTRUCTION TYPE CODE

Mercer	Peoria
SFTY-2A	SFTY-2A
FAS 220	FAP 317
100 % STATE	100% STATE

CODE No.	ITEM	UNIT	Tot.QTY		
50600600	CLEANING AND PAINTING STEEL BRIDGE NO. 1	L SUM	1	1	
50600700	CLEANING AND PAINTING STEEL BRIDGE NO. 2	L SUM	1		1
50600800	CLEANING AND PAINTING STEEL BRIDGE NO. 3	L SUM	1		1
50606401	CONTAINMENT AND DISPOSAL OF LEAD PAINT CLEANING RESIDUES NO.1	L SUM	1	1	
67100100	MOBILIZATION	L SUM	1	0.3	0.7
70100100	TRAFFIC CONTROL AND PROTECTION, STANDARD 701316	EACH	1	1	
70100450	TRAFFIC CONTROL AND PROTECTION, STANDARD 701201	L SUM	1	1	
70101830	TRAFFIC CONTROL AND PROTECTION, STANDARD BLR 21	L SUM	1		1
X5060602	CONTAINMENT AND DISPOSAL OF NON-LEAD PAINT CLEANING RESIDUES NO.2	L SUM	1		1
X5060603	CONTAINMENT AND DISPOSAL OF NON-LEAD PAINT CLEANING RESIDUES NO.3	L SUM	1		1

# Summary of Quantities

Code Order

ROUTE		SECTION	COUNTY	SHEET	
FAP	317	(45-VHB-1)I-1,2;(23-BR)I-1	PEORIA	TOTAL	NO.
US	24		MERCER	16	3
			CONTRACT NO.	68975	

## CONSTRUCTION TYPE CODE

Mercer	Peoria
SFTY-2A	SFTY-2A
FAS 220	FAP 317
100 % STATE	100% STATE

CODE No.	ITEM	UNIT	Tot.QTY		
X7015005	CHANGEABLE MESSAGE SIGN	CAL DA	6	3	3
Z0048665	RAILROAD PROTECTIVE LIABILITY INSURANCE	L SUM	1		1

# **COMMITMENTS**

No commitments have been made for this project.

# **GENERAL NOTES**

**Cleaning & painting of the existing steel shall be as specified in the special provision for "Cleaning and Painting Existing Steel Structures". All beams, bearings, and all other structural steel shall be cleaned per Near White Blast Cleaning – SSPC SP 10 according to the following schedule.**

**Bridge 1 – 3 – Entire Structure**

**The designated paint system shall be Paint System 5 – MCU.  
The final finish coat for the interior and exterior shall be according to the following schedule:**

**Bridge No. 1 – 3 – Paint system 5 shall be used and all exterior fascias including the bottom of the bottom flanges shall be blue ( Munsell No. 10B 3/6 ). All of the underside shall be painted Light Gray ( Munsell No. 5B 7/1 ).**

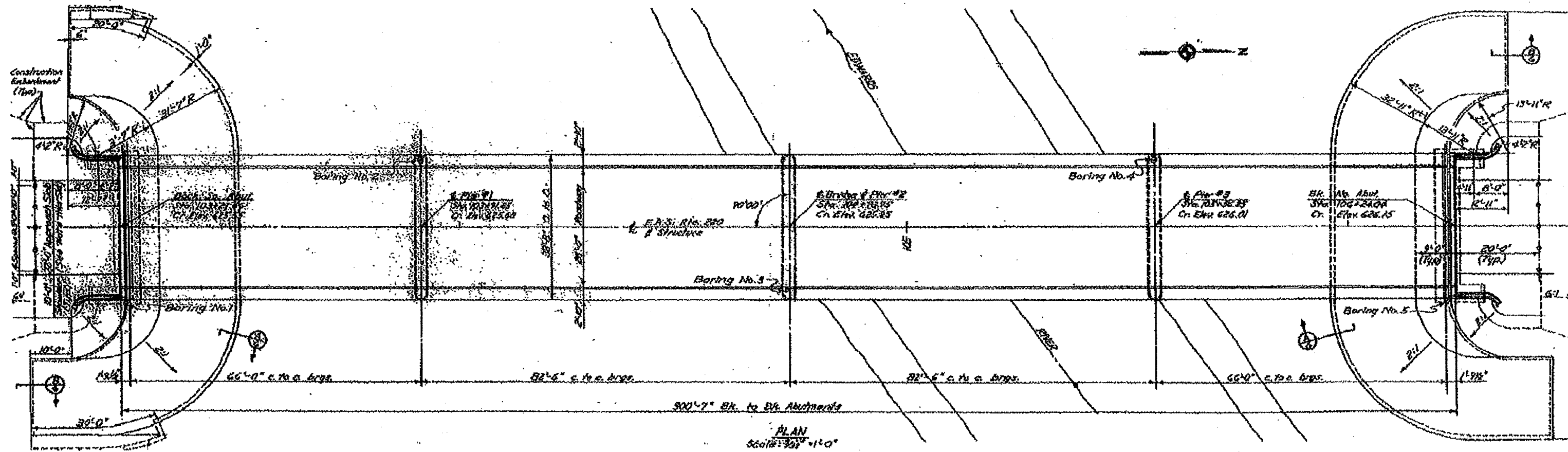
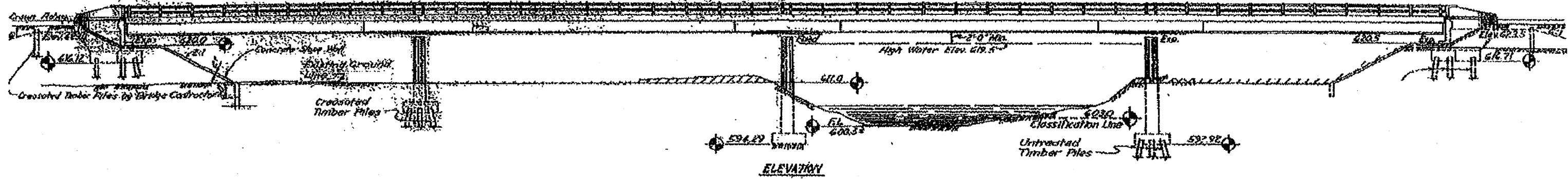
**LOCATION 3 – THIS STRUCTURE WAS WIDEN IN THE MID 70'S FOR A TOTAL OF 7 BEAM LINES, VIEW ALL PLAN SHEETS FOR BEAM SIZES.**

**QP1 & QP2 IS REQUIRED FOR THIS CONTRACT.**

**AIR MONITORS – None for this project**

FILE NAME = Copy of 68398.dgn	USER NAME = ing11stj	DESIGNED -	REVISED -	<b>STATE OF ILLINOIS DEPARTMENT OF TRANSPORTATION</b>	SCALE:		SHEET NO.	OF	SHEETS	STA.	TO	STA.	F.A. RTE.	SECTION	COUNTY	TOTAL SHEETS	SHEET NO.
		DRAWN -	REVISED -											(43-VHB-1)-1.2.(23-08)-1	VARIOUS	16	4
		PLOT SCALE = 1/8" = 1' / IN.	CHECKED -		REVISED -									CONTRACT NO. 68975			
		PLOT DATE = 3/25/2010	DATE -		REVISED -									ILLINOIS FED. AID PROJECT			

# LOCATION 1 - 066-0008 PLAN VIEW FOR INFORMATION ONLY



**WATERWAY INFORMATION**

Drainage Area ..... 214,300 Acres

Character ..... Rolling, hilly & cut.

Required Opening (25 Year Flood) ..... 8,680 sq. ft.

Present Opening ..... 3,100 sq. ft.

Proposed Opening ..... 2,660 sq. ft.

Ordinary Water Elev. .... 602.5

High Water Elev. .... 602.5

No channel relocation required.

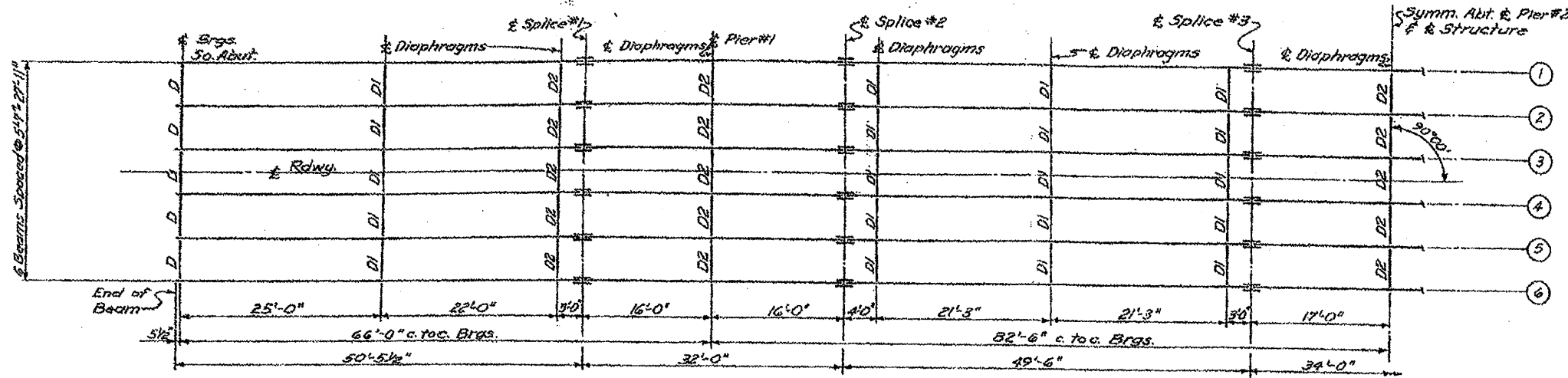
FILE NAME = Copy of 68398.dgn	USER NAME =	DESIGNED - designed by	REVISED - revised by1
		DRAWN - drawn by	REVISED - revised by2
		CHECKED - checked by	REVISED - revised by3

**STATE OF ILLINOIS  
DEPARTMENT OF TRANSPORTATION**

F.A. RTE.	SECTION	COUNTY	TOTAL SHEETS	SHEET NO.
US 24/IL94	(45-VHB-1)-1,2&23-BR1-1	PEORIA & MERCER	16	8
CONTRACT NO. 68975				

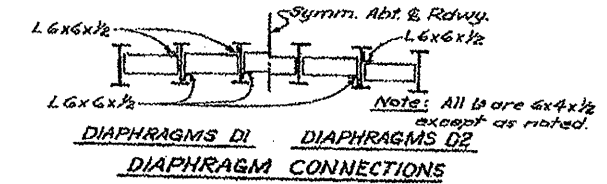
# LOCATION 1 - FOR INFORMATION ONLY - 066-0008

## FRAMING PLAN, BEARINGS & DIAPHRAGMS

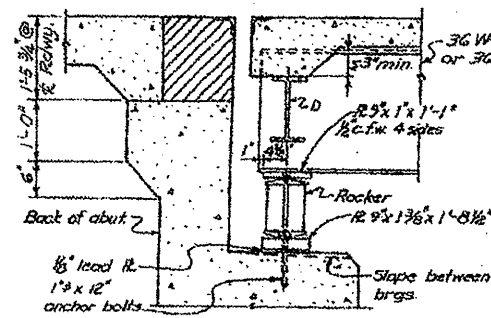


**STRUCTURAL STEEL LAYOUT**

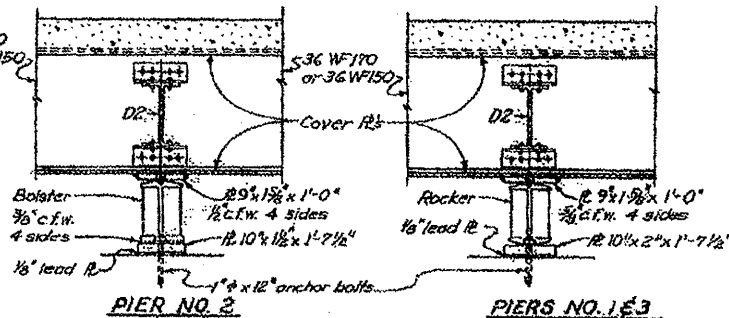
Beams ①-⑥: 36 WF170  
Beams ⑦-⑩: 36 WF150



**DIAPHRAGM CONNECTIONS**

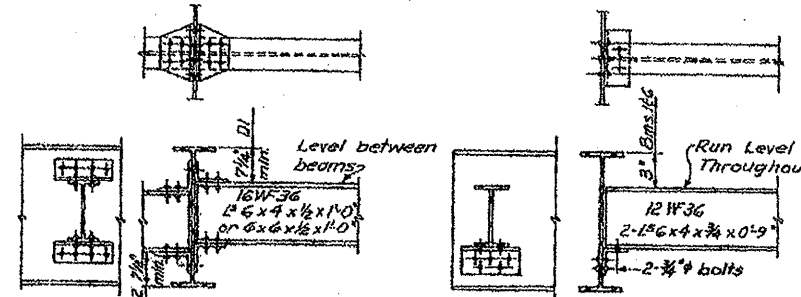


**SECTION AT ABUTMENT**



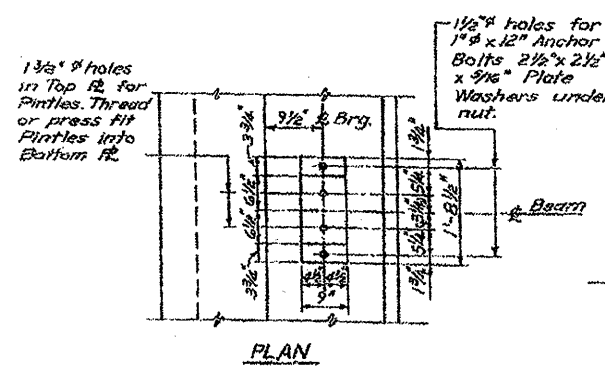
**PIER NO. 2**

**PIERS NO. 1 & 3**

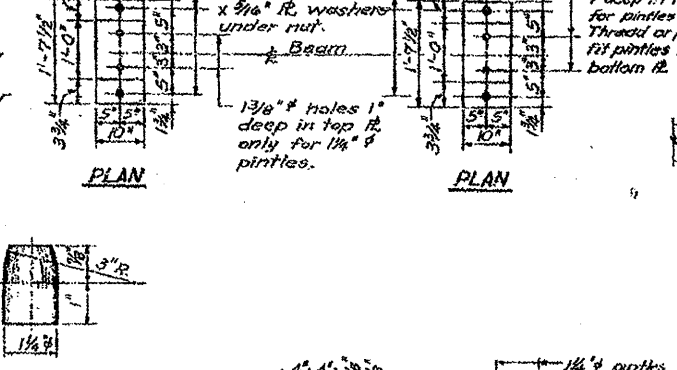


**DIAPHRAGM DI & D2**

**DIAPHRAGM D**

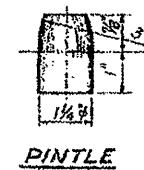


**PLAN**

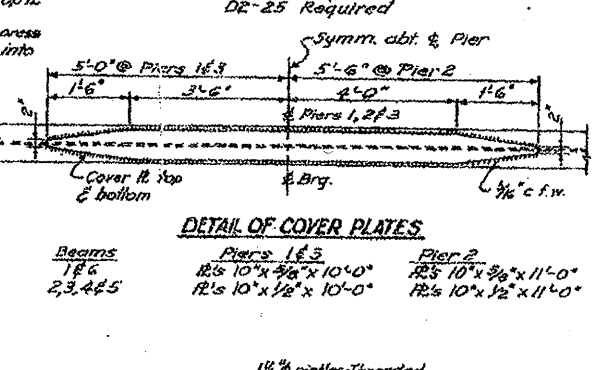


**PLAN**

**PLAN**

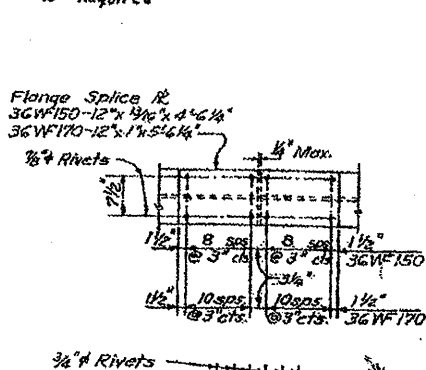


**PINTLE**

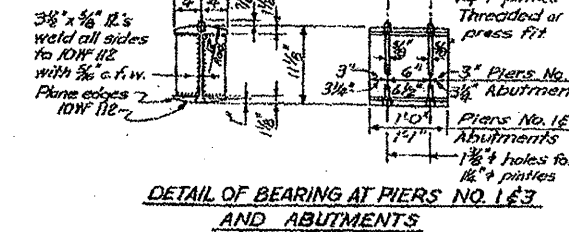


**DETAIL OF COVER PLATES**

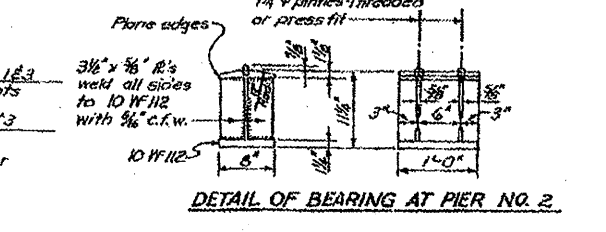
Beams 1E, 2, 3, 4, 5  
Piers 1 & 3: 12's 10" x 3/8" x 10'-0", 12's 10" x 1/2" x 10'-0"  
Pier 2: 12's 10" x 3/8" x 11'-0", 12's 10" x 1/2" x 11'-0"



**DETAIL OF SPLICES**



**DETAIL OF BEARING AT PIERS NO. 1 & 3 AND ABUTMENTS**



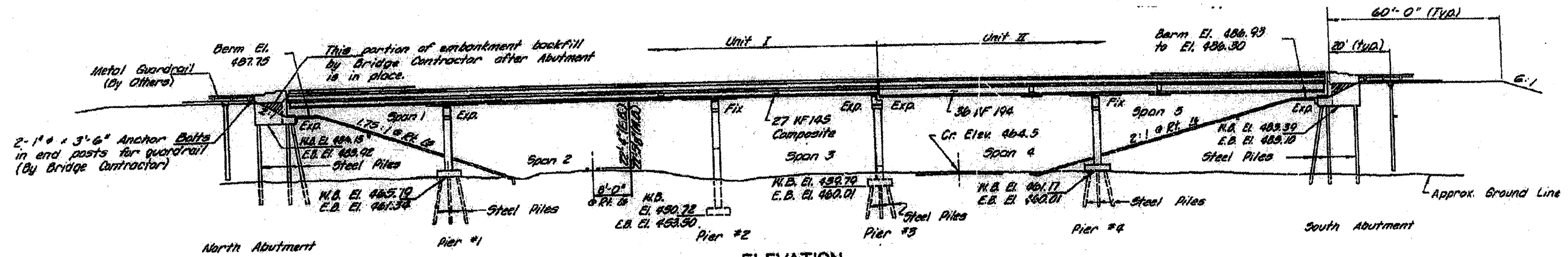
**DETAIL OF BEARING AT PIER NO. 2**

USER NAME = ing1stj	DESIGNED - designed by	REVISED - revised by1
	DRAWN - drawn by	REVISED - revised by2
PLOT SCALE = 1/80.4219' / IN.	CHECKED - checked by	REVISED - revised by3
PLOT DATE = 3/25/2010	DATE - checked date	REVISED - revised by4

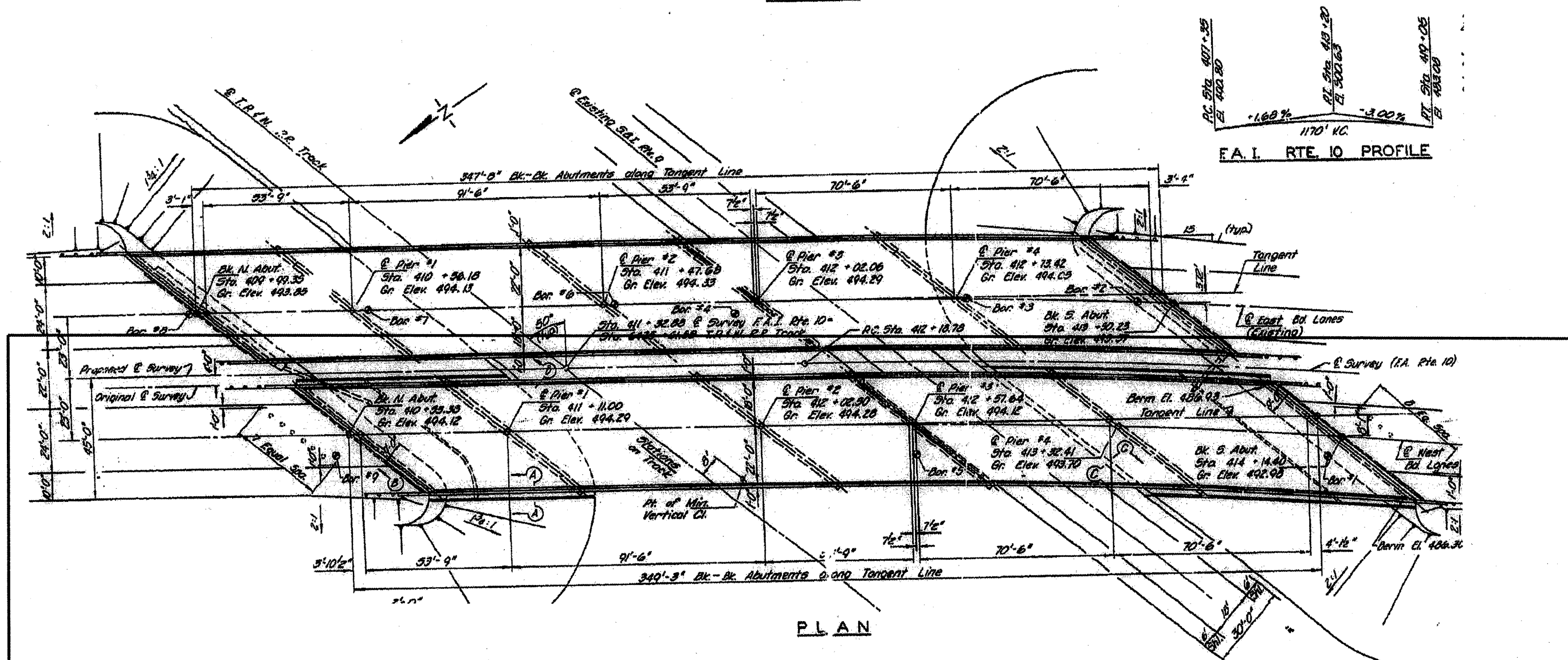
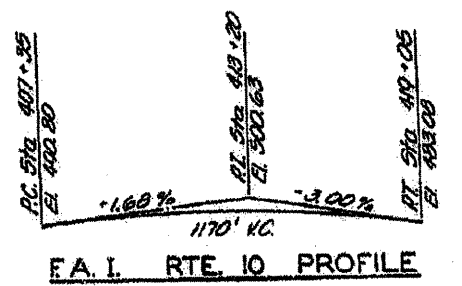
STATE OF ILLINOIS  
DEPARTMENT OF TRANSPORTATION

SCALE:	SHEET NO. OF SHEETS	STA. TO STA.	F.A. RTE.	SECTION	COUNTY	TOTAL SHEETS	SHEET NO.
			US 24/IL94	(45-VHB-111-1,2;23-BR1-1	PEORIA & MERCER	16	8
						CONTRACT NO. 68975	
							ILLINOIS FED. AID PROJECT





ELEVATION

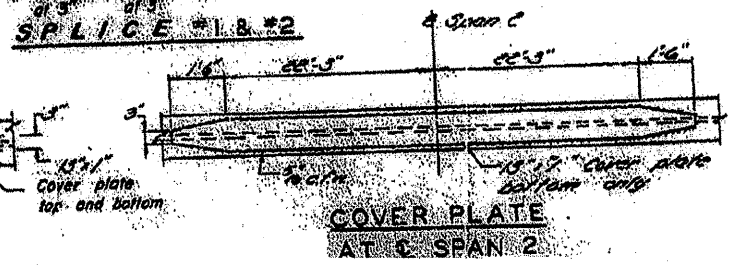
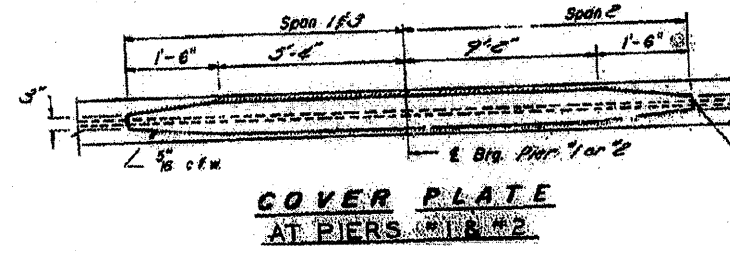
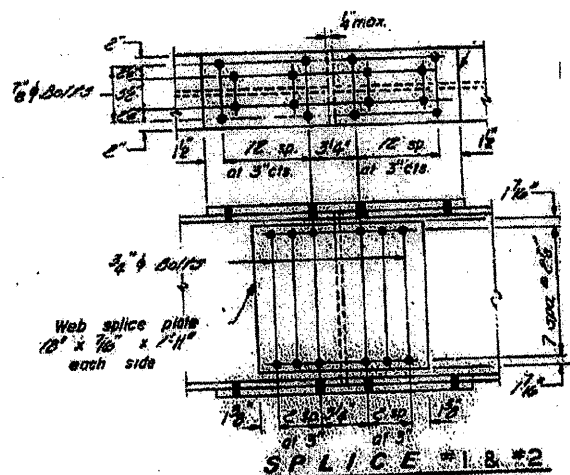
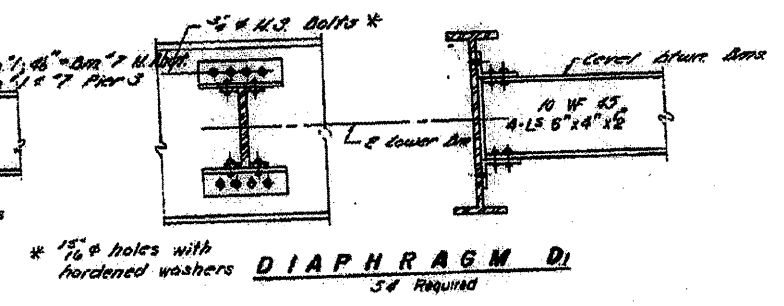
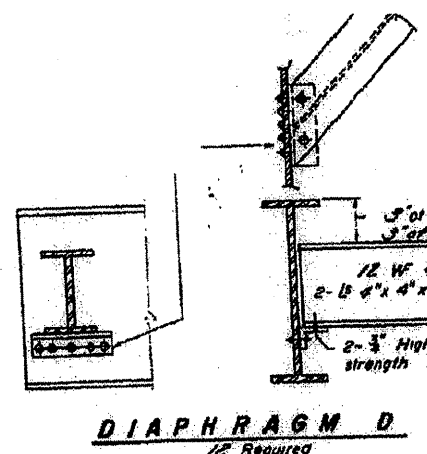
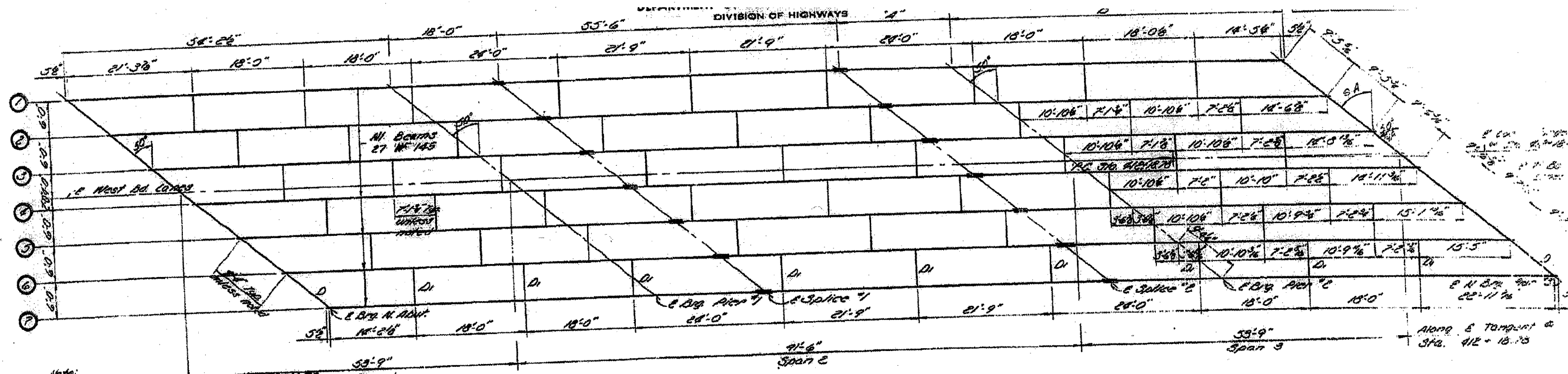


PLAN

072-0135

FILE NAME = Copy of 68390.dgn	USER NAME = inglistj	DESIGNED -	REVISED -	STATE OF ILLINOIS DEPARTMENT OF TRANSPORTATION	SCALE: SHEET NO. OF SHEETS STA. TO STA.	F.A. RTE.	SECTION	COUNTY	TOTAL SHEETS	SHEET NO.
	PLOT SCALE = 1/8" = 100'	DRAWN -	REVISED -			(45-YHB-1)-1.2(23-BR)-1	peoria	18	7	
	PLOT DATE = 3/25/2010	CHECKED -	REVISED -			CONTRACT NO. 68975				
		DATE -	REVISED -			ILLINOIS FED. AID PROJECT				

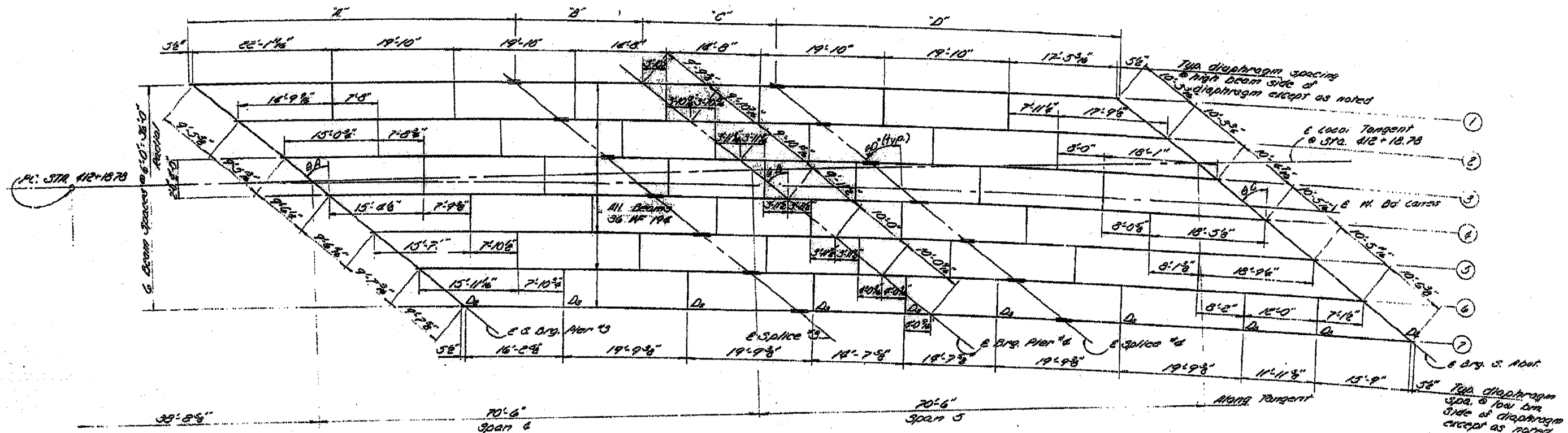
# LOCATION 2 072-0135 FRAMING PLAN SPANS 1-3 FOR INFORMATION ONLY



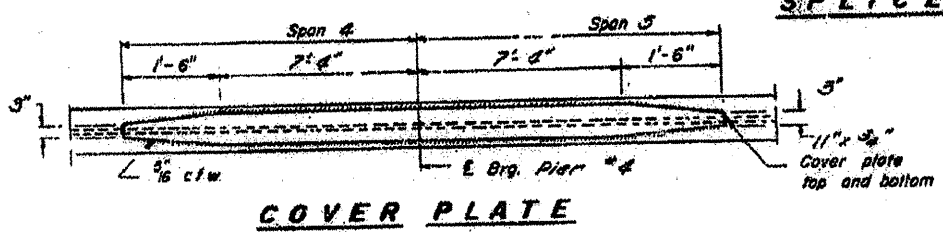
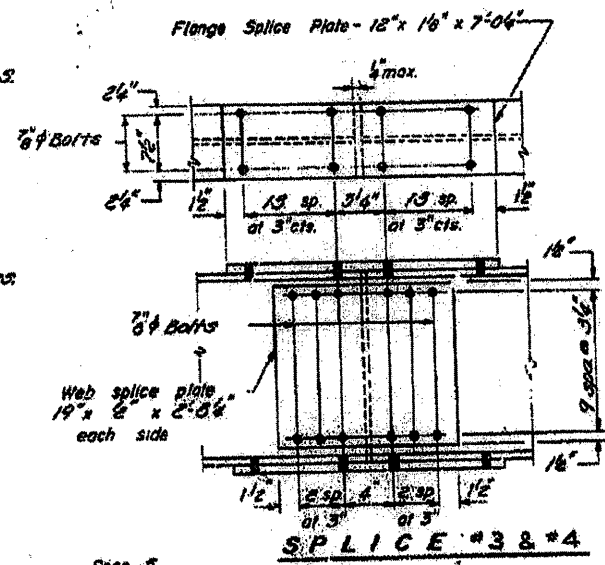
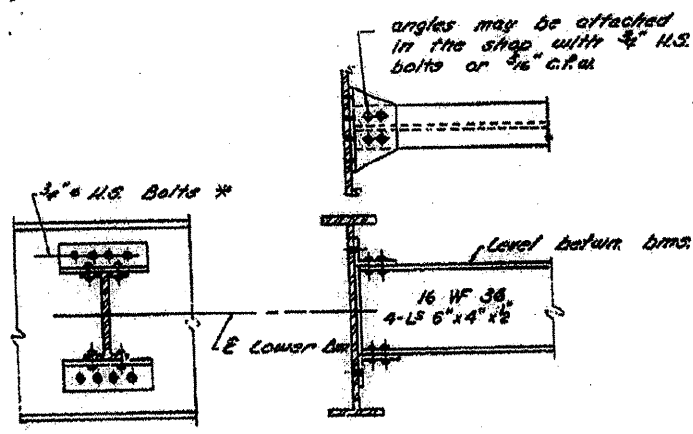
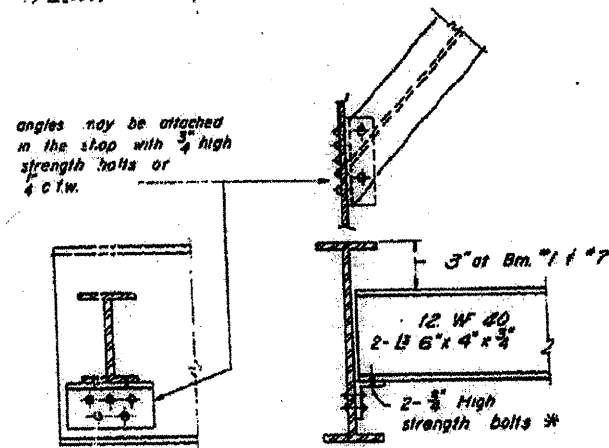
FILE NAME = Copy of 68390.dgn	USER NAME = inglistj	DESIGNED - designed by	REVISED - revised by1	<b>STATE OF ILLINOIS DEPARTMENT OF TRANSPORTATION</b>	F.A. RTE. US 24/IL94	SECTION (45-VHB-111-1.2(23-BR1)-1	COUNTY PEORIA & MERCER	TOTAL SHEETS 16	SHEET NO. 8
		DRAWN - drawn by	REVISED - revised by2		SCALE: scale			CONTRACT NO. 68975	
		CHECKED - checked by	REVISED - revised by3		SHEET NO. OF SHEETS	STA.	TO STA.		
		DATE - checked date	REVISED - revised by4					ILLINOIS FED. AID PROJECT	



# LOCATION 2 072-0135 FRAMING PLAN SPANS 4 & 5 FOR INFORMATION ONLY



*Notes:*  
 Place diaphragm  $D_2$   
 at var. radial lines.  
 All dimensions along E  
 of beams unless noted.  
 Curve all beams to individual  
 radii.

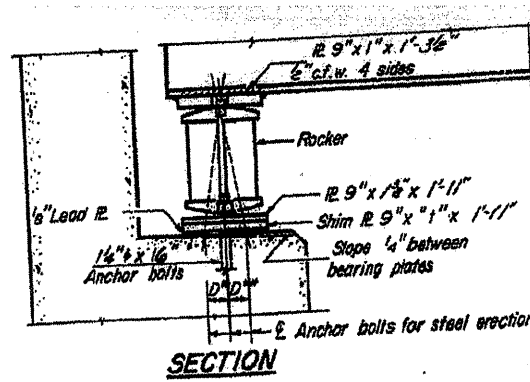


FILE NAME =	USER NAME = inglistj	DESIGNED - designed by	REVISED - revised by1	<b>STATE OF ILLINOIS DEPARTMENT OF TRANSPORTATION</b>	F.A. RTE.	SECTION	COUNTY	TOTAL SHEETS	SHEET NO.
Copy of 68398.dgn		DRAWN - drawn by	REVISED - revised by2		US 24/IL94	(45-VHB-111-1.2423-BR1-1)	PEORIA & MERCER	16	9
		PLOT SCALE = 1/8" = 1'-0"	REVISED - revised by3						
		PLOT DATE = 3/25/2018	REVISED - revised by4						
					SCALE:	SHEET NO.	OF SHEETS	STA.	TO STA.
					ILLINOIS FED. AID PROJECT				

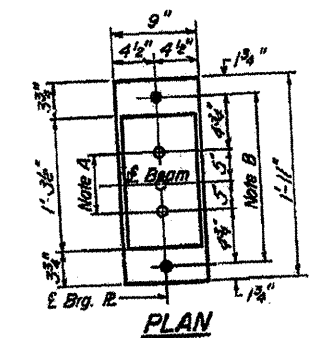
072-0135 & 072-0009

BEARINGS SPANS 1 - 5

FOR INFORMATION ONLY

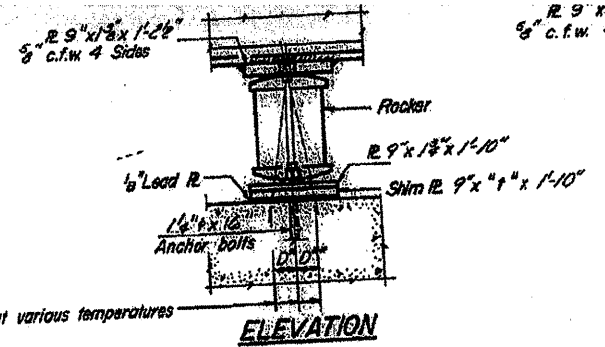


SECTION

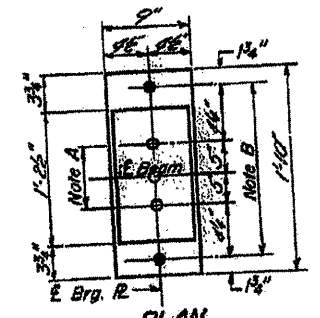


PLAN AT N. ABUTMENT & PIER #3 (N. BRG.)

NOTE A  
1 3/8" Holes - 1" deep in top R. for pintles. Thread or press fit pintles into bottom R.

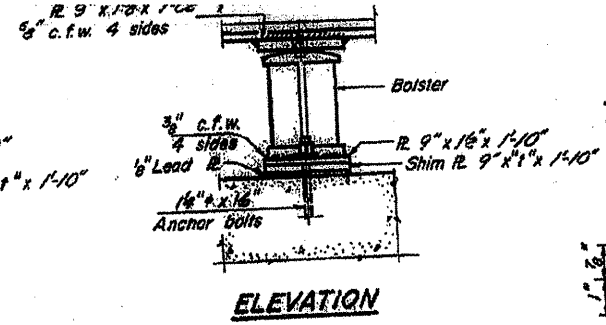


ELEVATION

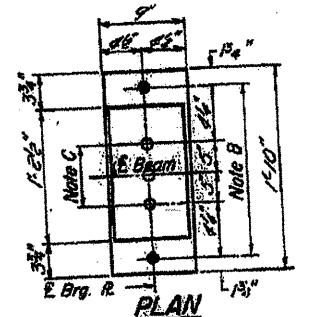


PLAN AT PIER #1

NOTE B  
1 1/2" Holes for 1 1/2" anchor bolts. 2 1/2" x 2 1/2" x 3/16" R. Washers under nut.

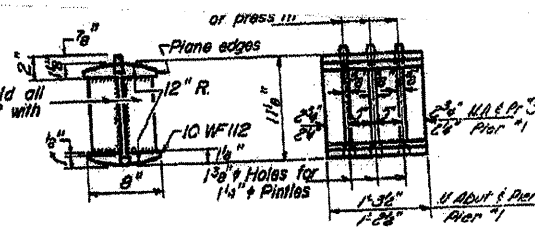


ELEVATION

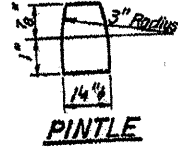


PLAN AT PIER #2

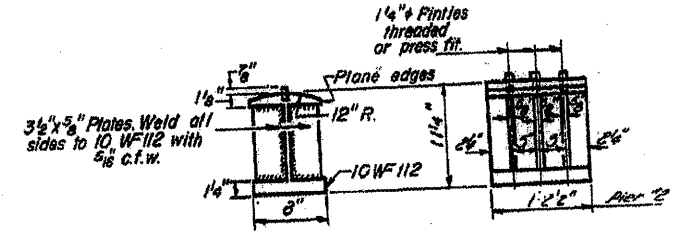
NOTE C  
1 3/8" Holes 1" deep in top R. only for 1 1/4" pintles.



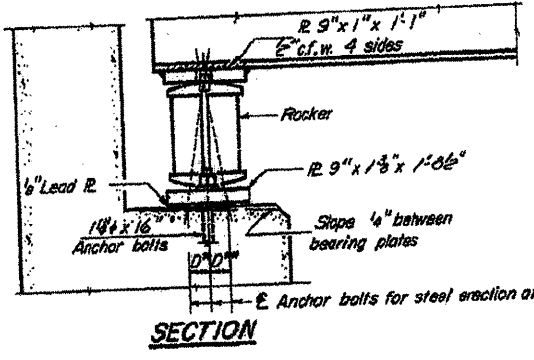
ROCKER



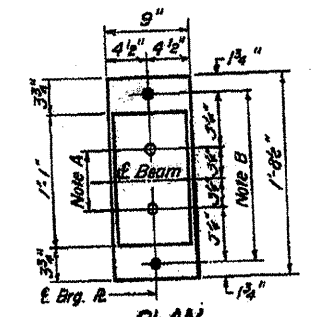
PINTLE



BOLSTER

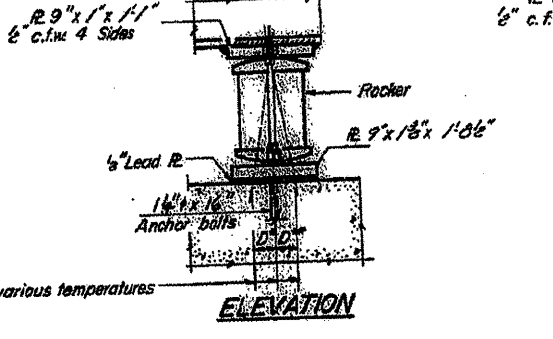


SECTION

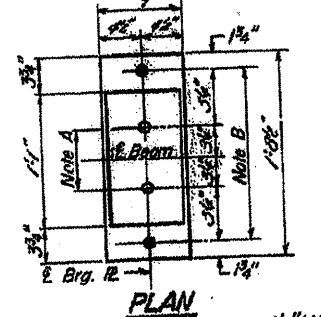


PLAN AT S. ABUTMENT

NOTE A  
1 3/8" Holes - 1" deep in top R. for pintles. Thread or press fit pintles into bottom R.

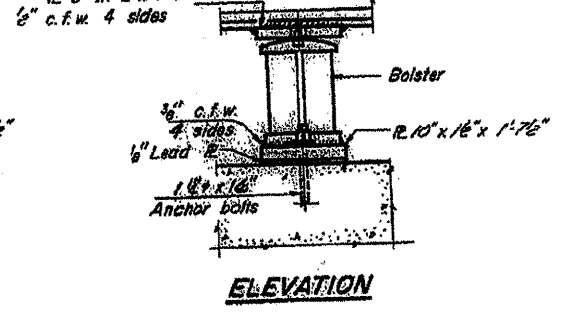


ELEVATION

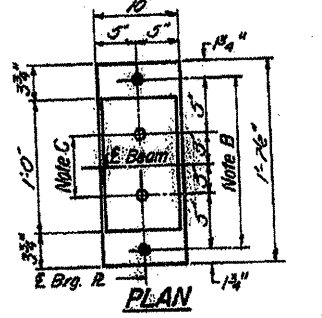


PLAN AT PIER #3 S. BRG.

NOTE B  
1 1/2" Holes for 1 1/2" anchor bolts. 2 1/2" x 2 1/2" x 3/16" R. Washers under nut.

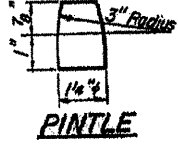


ELEVATION

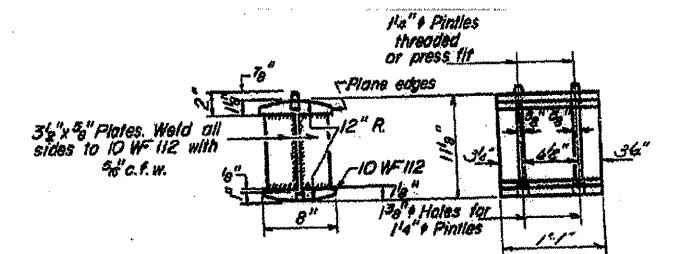


PLAN AT PIER #4

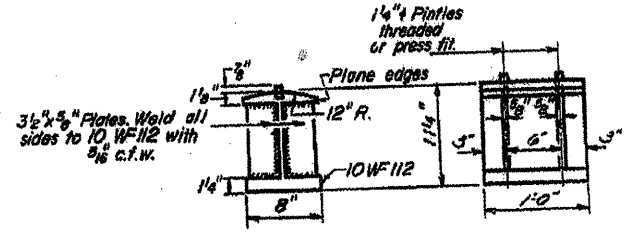
NOTE C  
1 3/8" Holes 1" deep in top R. only for 1 1/4" pintles.



PINTLE



ROCKER



BOLSTER

BEARING ASSEMBLY DETAILS

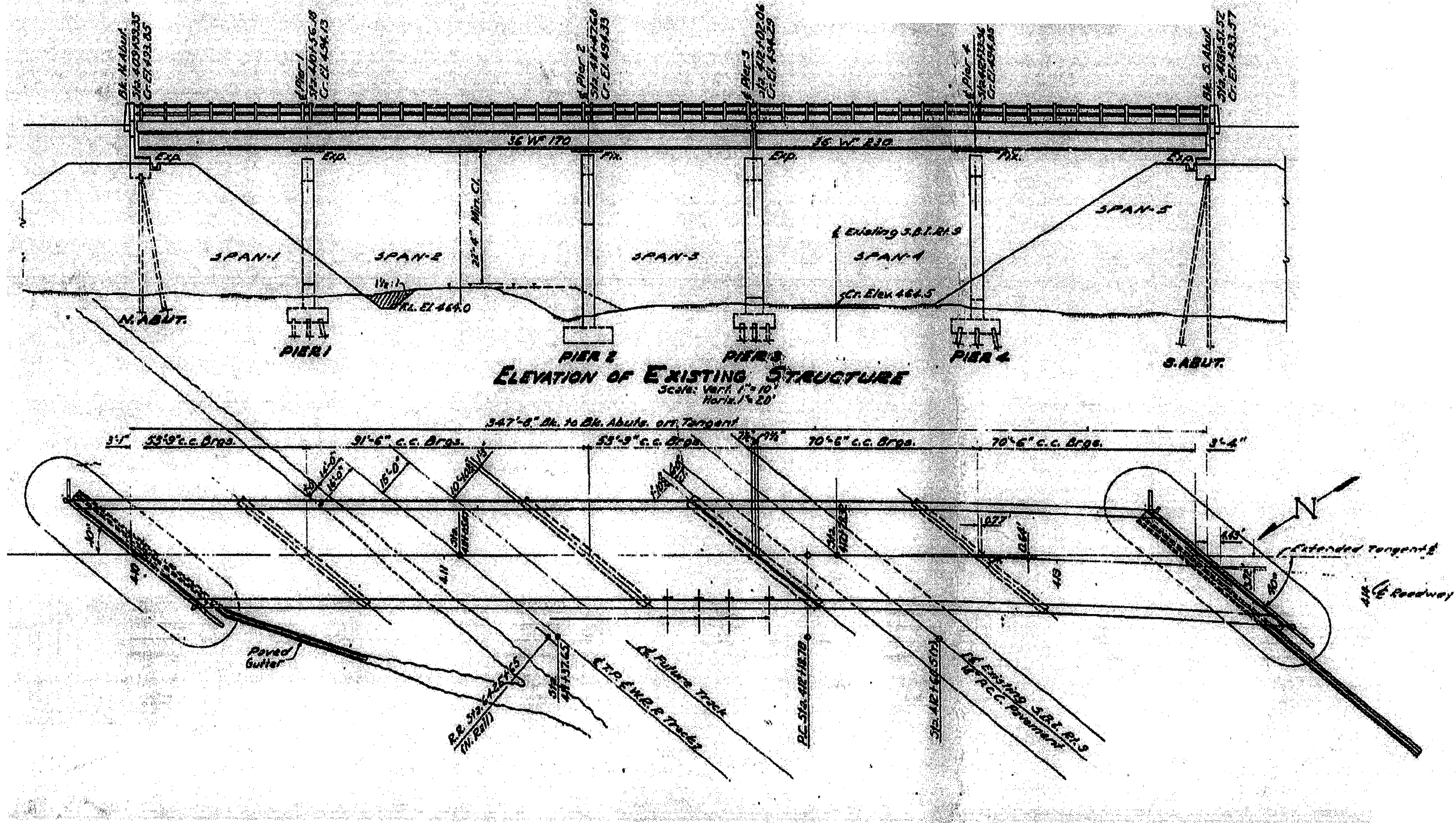
BEARING ASSEMBLY DETAILS

FILE NAME = Copy of 68398.dgn	USER NAME = inglistj	DESIGNED - designed by	REVISED - revised by1	STATE OF ILLINOIS DEPARTMENT OF TRANSPORTATION	F.A. RTE. US 24/IL94	SECTION (45-VHB-11)-1,2,(23-BR)-1	COUNTY PEORIA & MERCER	TOTAL SHEETS 10	SHEET NO. 10
		DRAWN - drawn by	REVISED - revised by2		SCALE:			CONTRACT NO. 68975	
		CHECKED - checked by	REVISED - revised by3		SHEET NO. OF SHEETS	STA.	TO STA.	ILLINOIS FED. AID PROJECT	
		PLOT SCALE = 1/8" = 1'-0"	REVISED - revised by4						
		PLOT DATE = 3/25/2010							

LOCATION 3

072-0009 - PLAN VIEW

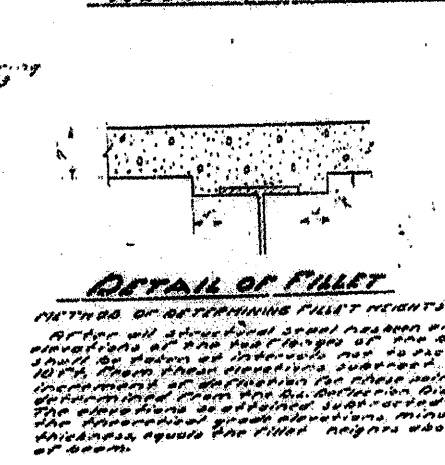
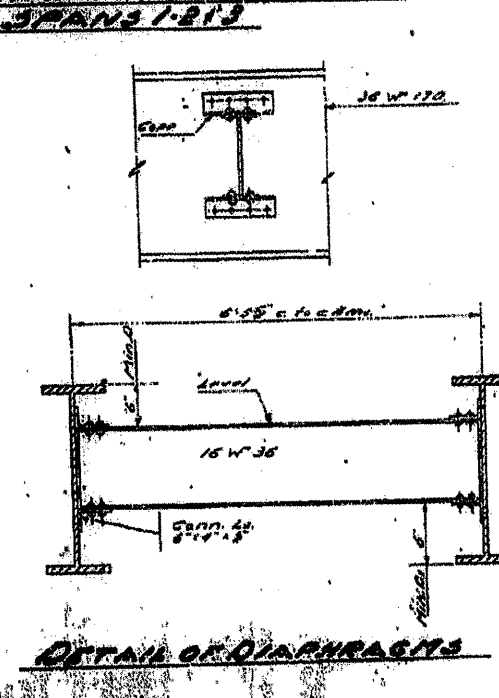
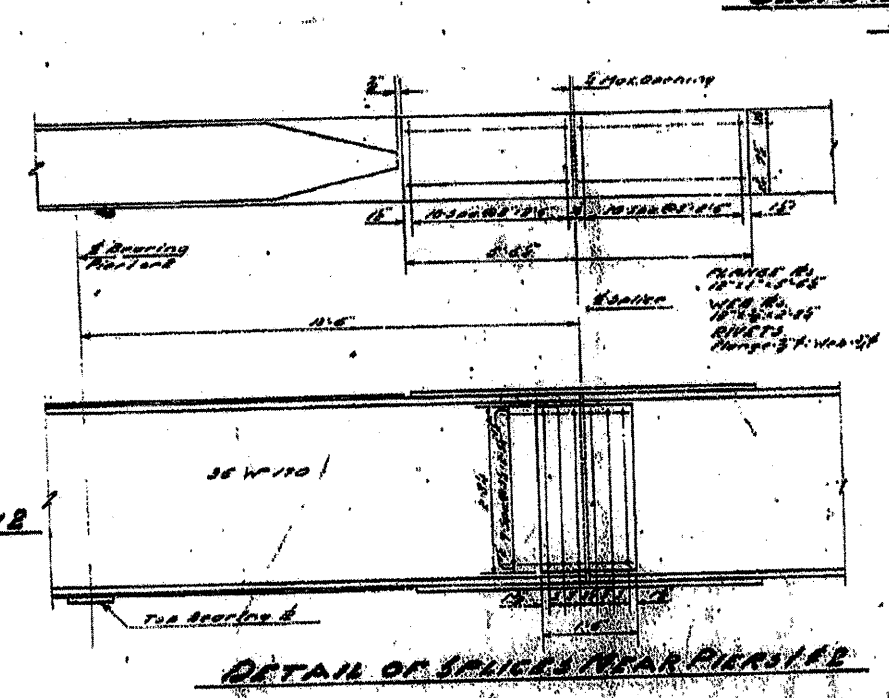
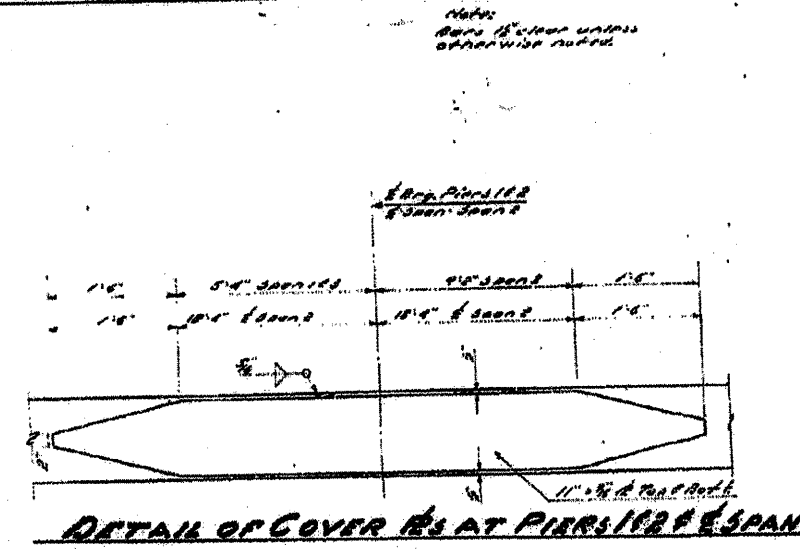
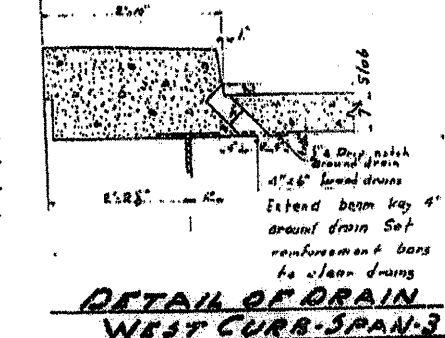
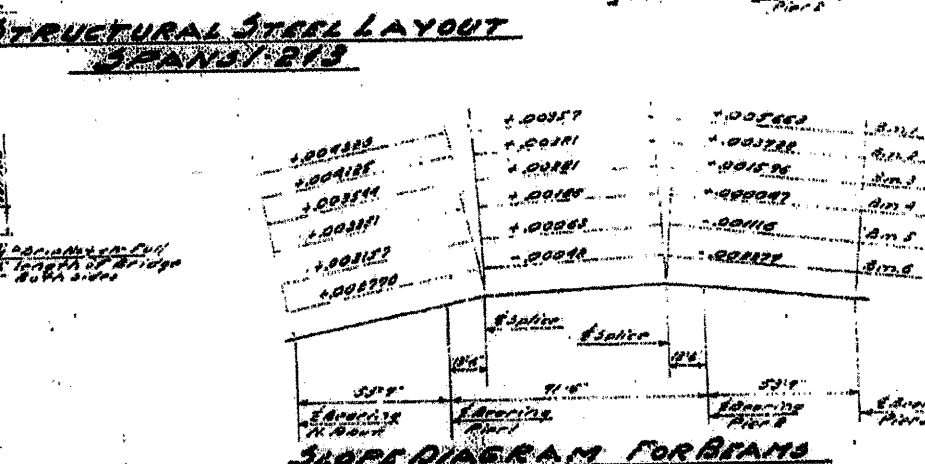
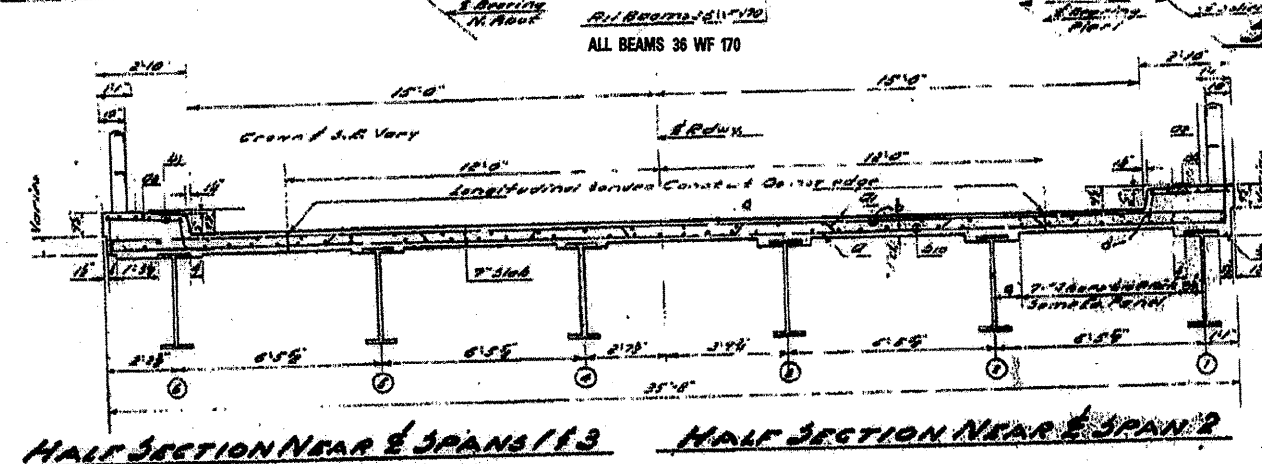
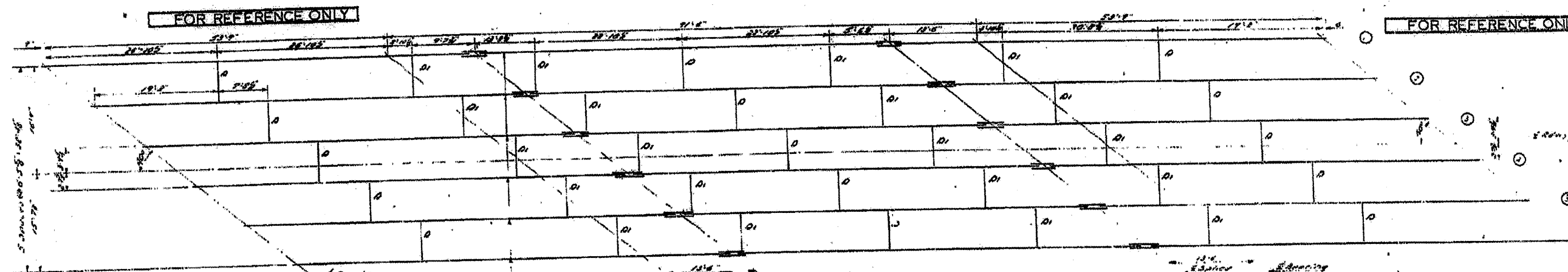
INFORMATION ONLY



FILE NAME = Copy of 68398.dgn	USER NAME = sng1stj	DESIGNED - designed by	REVISED - revised by1	STATE OF ILLINOIS DEPARTMENT OF TRANSPORTATION	F.A. RTE. US 24/IL94	SECTION (45-VHB-1)-1,2,23-BR1-1	COUNTY PEORIA & MERCER	TOTAL SHEETS 16	SHEET NO. 11
PLOT SCALE = 100.2750' / IN.	CHECKED - checked by	REVISED - revised by2	REVISED - revised by3		SCALE: scale	CONTRACT NO. 68975		ILLINOIS FED. AID PROJECT	
PLOT DATE = 3/25/2018	DATE - checked date	REVISED - revised by4			SHEET NO. OF SHEETS	STA. TO STA.			

**LOCATION 3**

**072-0009 FRAMING PLAN SPANS 1 - 3 INFORMATION ONLY**

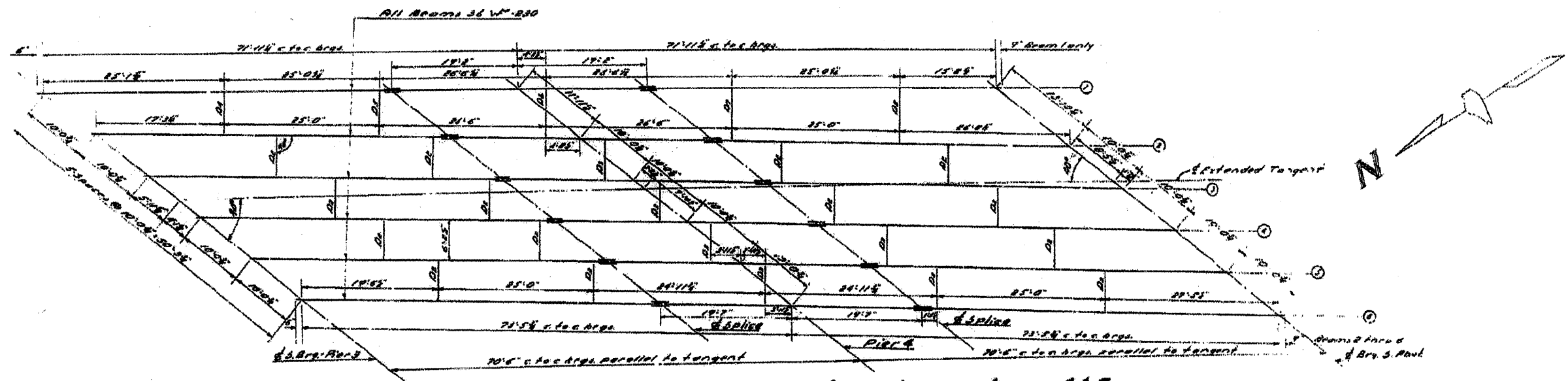


**BILL OF MATERIAL**  
 Structural Steel 200, 241, 170  
**DETAILS**  
**SPANS 1-3**  
**T. R. W. R. 1-3 B. R. T. 3**  
**T. R. W. R. 1-3 B. R. T. 3**  
**PEORIA COUNTY**  
**37A.**

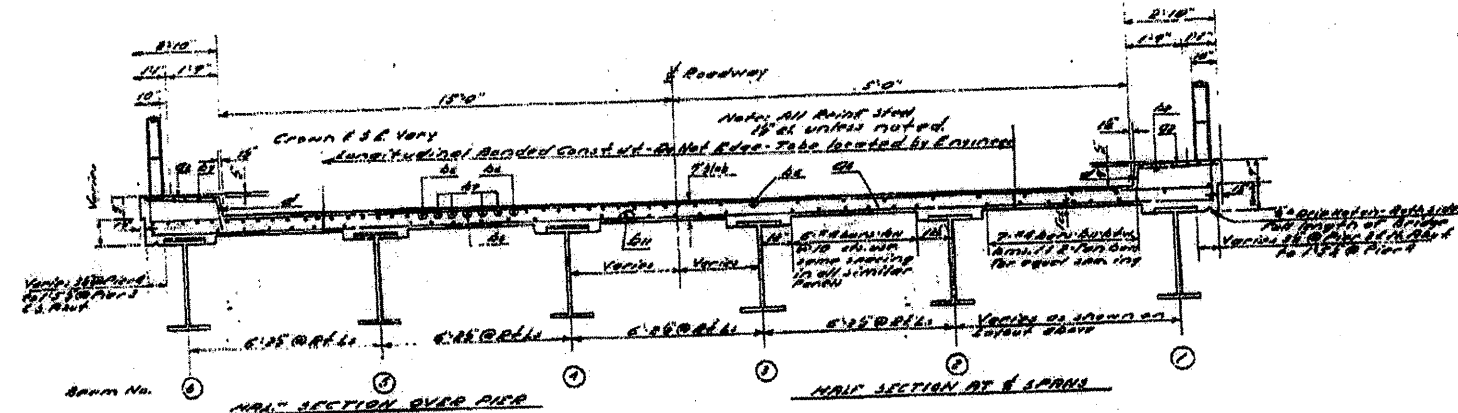
FILE NAME = Copy of 68398.dgn	USER NAME = inglistj	DESIGNED -	REVISED -	<b>STATE OF ILLINOIS DEPARTMENT OF TRANSPORTATION</b>	SCALE:      SHEET NO.      OF      SHEETS      STA.      TO      STA.	F.A. RTE.	SECTION	COUNTY	TOTAL SHEETS	SHEET NO.	
		DRAWN -	REVISED -			US 24	(45-VHB-11)-1,2,(23-BR)-1	PEORIA	16	12	
		PLOT SCALE = 1/8" = 1'-0"	CHECKED -			REVISED -				CONTRACT NO. 68975	
		PLOT DATE = 3/25/2010	DATE -			REVISED -				ILLINOIS FED. AID PROJECT	



# LOCATION 3 072-0009 FRAMING PLAN SPANS 4&5

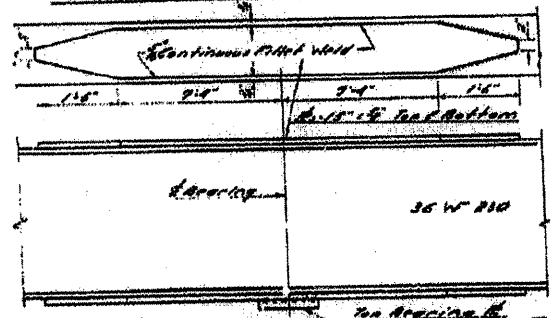


**STRUCTURAL STEEL LAYOUT - SPANS 4 & 5**  
 All Diaphragms set perpendicular to Beams 8 thru 5

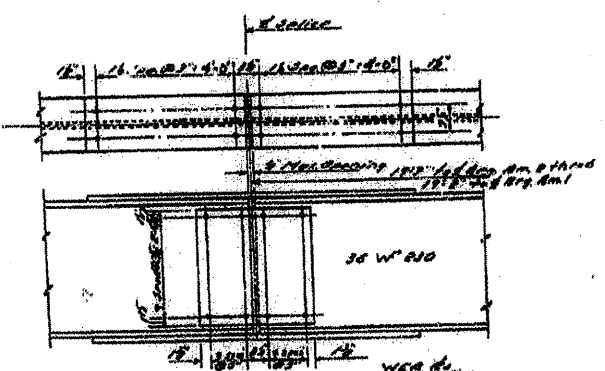


Beam No.	Span	Beam No.	Span
-000300	-000177	-000300	Beam 1
-000301	-000178	-000301	Beam 2
-000302	-000179	-000302	Beam 3
-000303	-000180	-000303	Beam 4
-000304	-000181	-000304	Beam 5
-000305	-000182	-000305	Beam 6
-000306	-000183	-000306	Beam 7
-000307	-000184	-000307	Beam 8
-000308	-000185	-000308	Beam 9
-000309	-000186	-000309	Beam 10

**SLOPE DIAGRAM - SPANS 4 & 5**

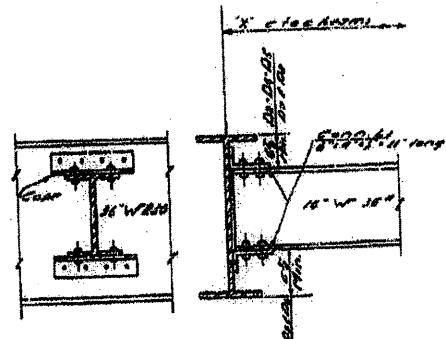


**DETAIL OF COVER PLATES - PIER 4**



**DETAIL OF SPLICES**

Beam No.	Span	Beam No.	Span
36 W F 230	4	36 W F 230	5



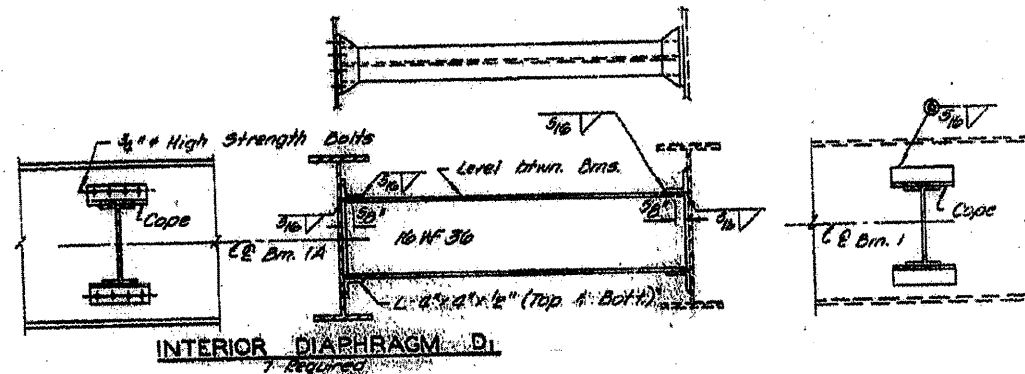
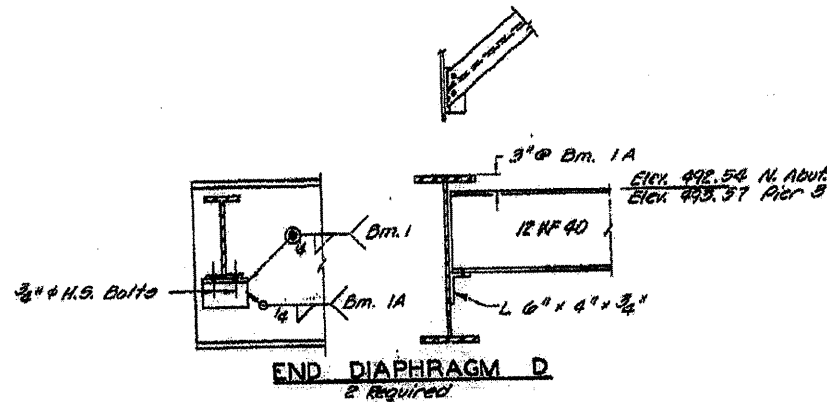
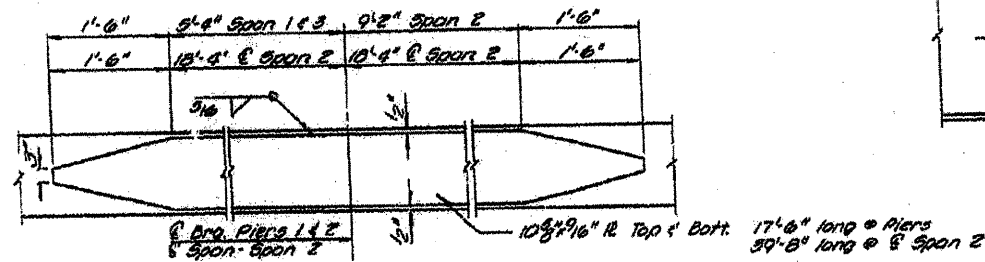
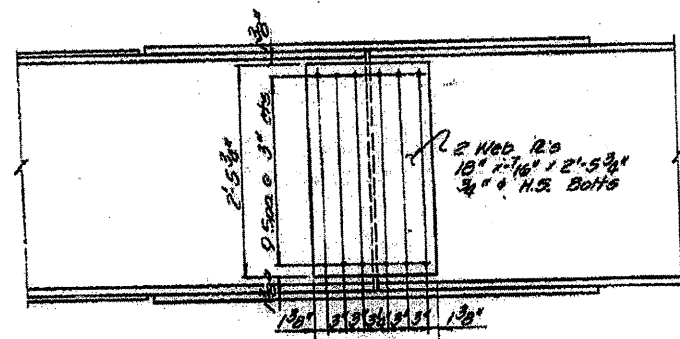
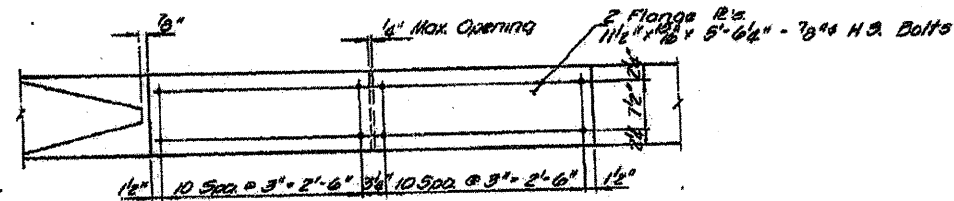
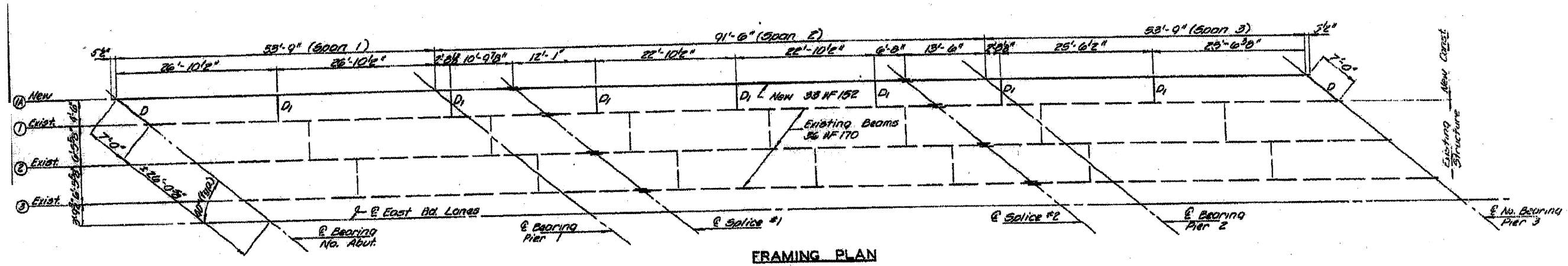
**DETAIL OF DIAPHRAGMS**

DESIGNED: *Richard D. Rogers* DEC 29 11 29  
 CHECKED: *Mc N. H. H. H.*  
 DRAWN: *R. W. G. Kelley*  
 CHECKED: *Mc N. H. H. H.*

STATE OF ILLINOIS  
 DEPARTMENT OF TRANSPORTATION

LOCATION 3

072-0009 ADDED BEAM LINE & DIAPHRAGMS SPANS 1 - 3

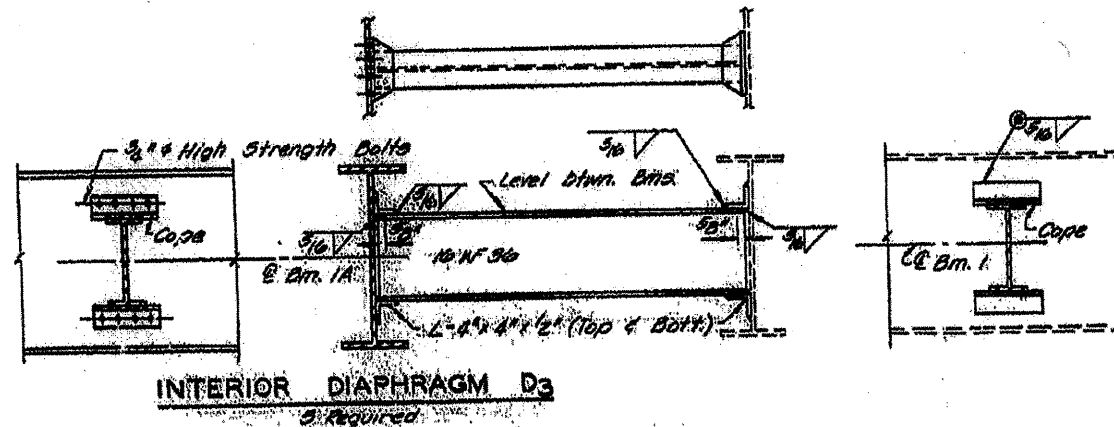
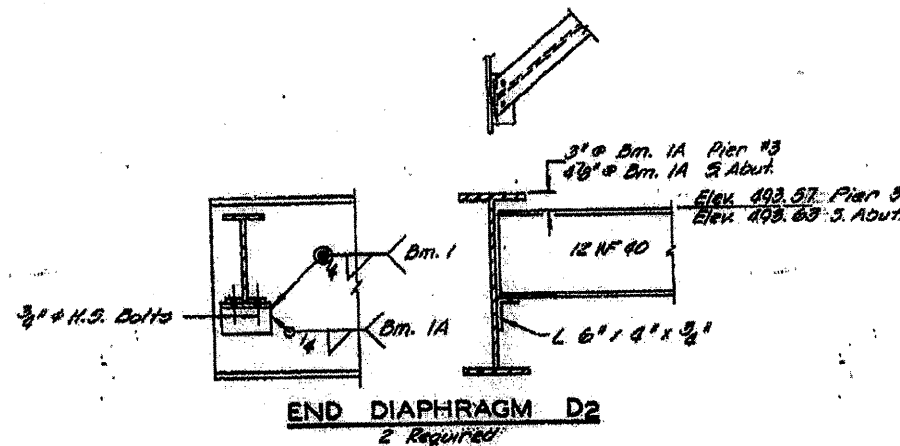
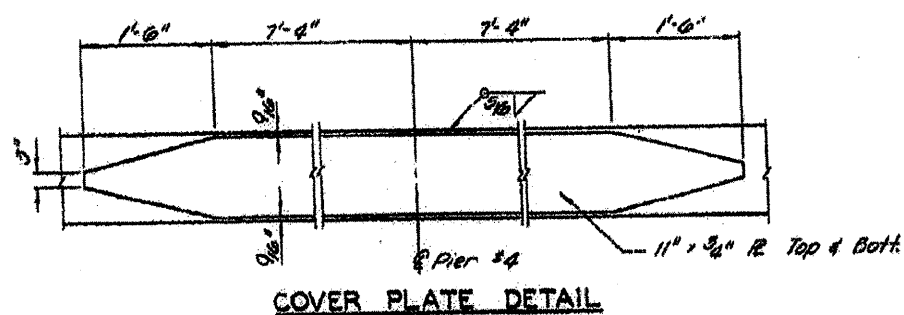
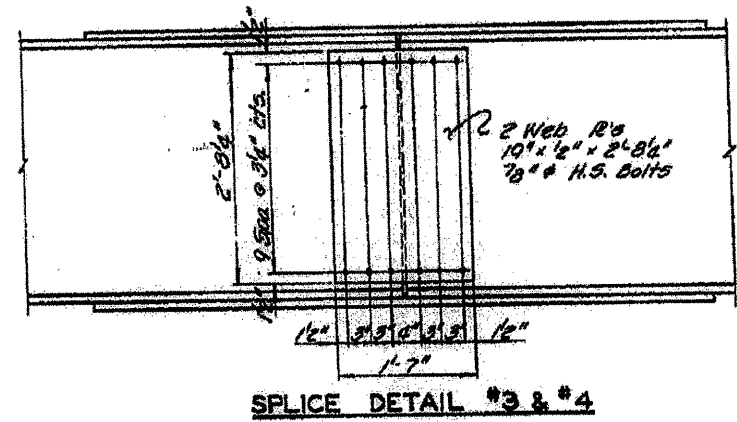
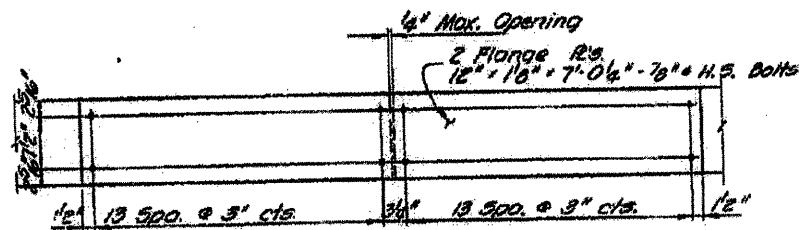
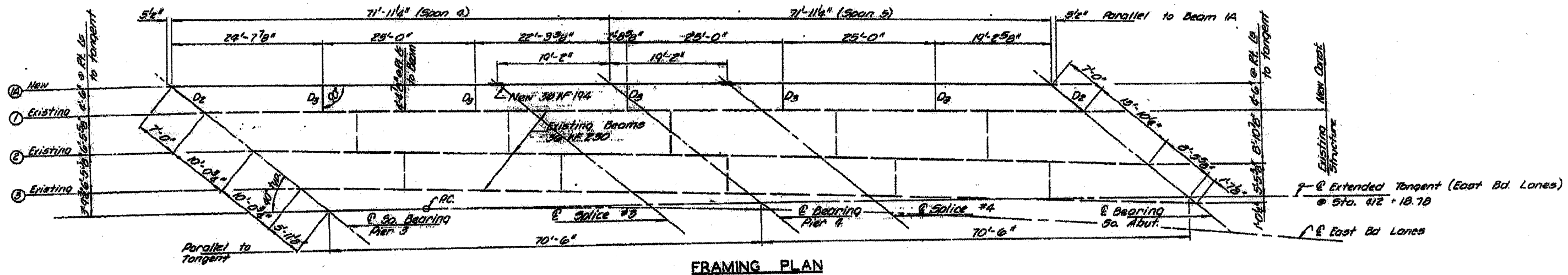


TOP OF BEAM 1A ELEV.

Brig. N. Abut.	Brig. Pier 1	Splice 1	Splice 2	Brig. Pier 2	Brig. Pier 3
492.79	493.02	493.10	493.34	493.44	493.82



**LOCATION 3 072-0009 ADDED BEAM LINE SPANS 4 & 5**



**TOP OF BEAM 1A ELEV**

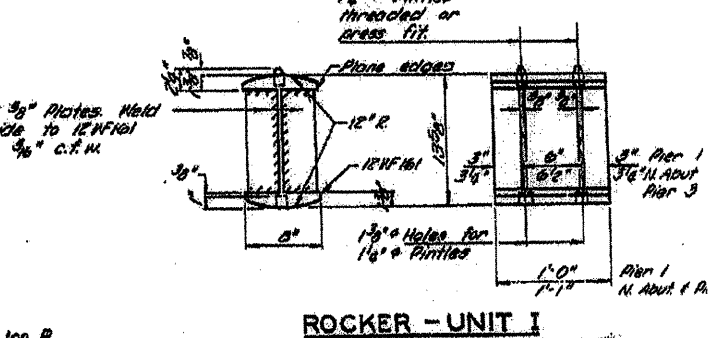
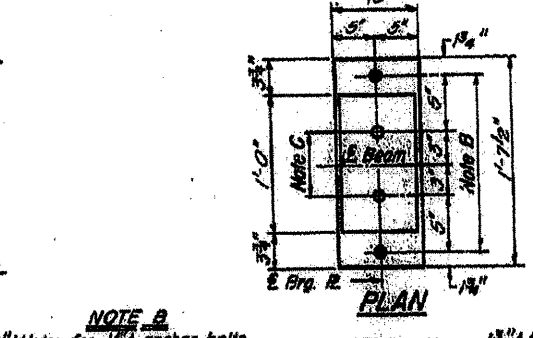
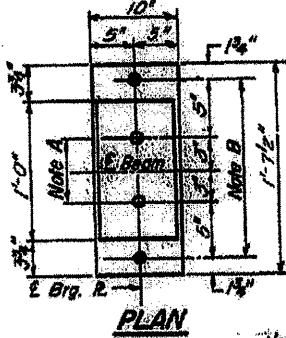
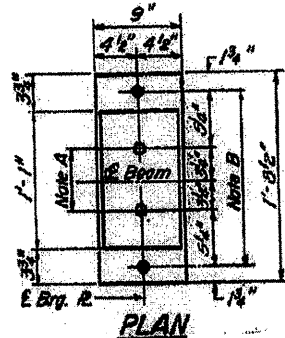
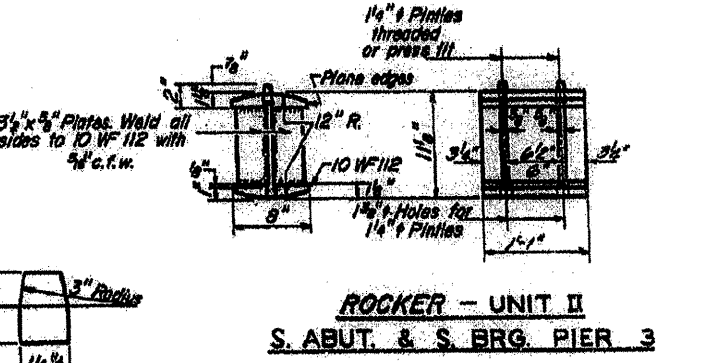
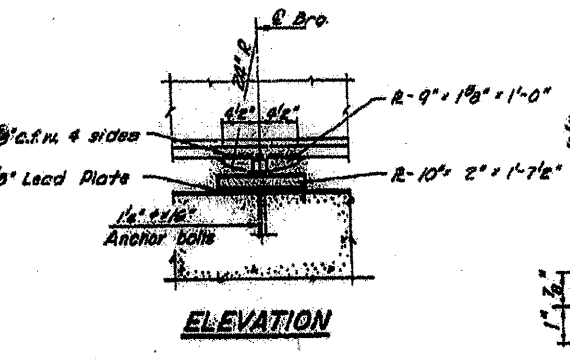
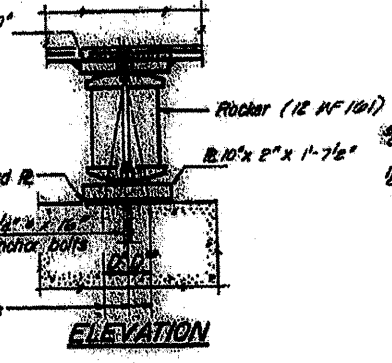
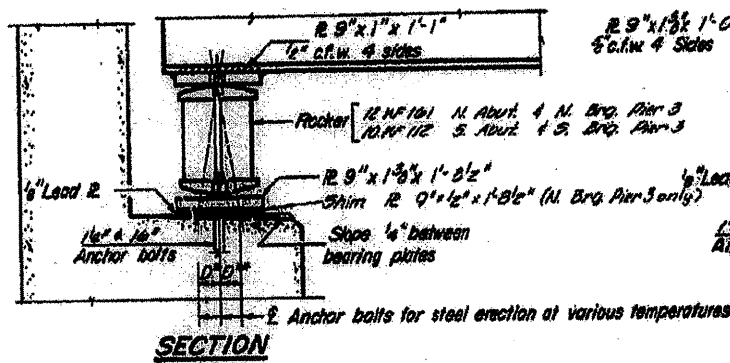
B.S. Org. Pier #3	Splice #3	B. Org. Pier #4	Splice #4	B. Org. S. Abut.
499.82	499.92	499.93	499.98	499.04

**WIDENING**  
**STRUCTURAL STEEL - UNIT I**  
 I.A. RTE. 10 SEC. 45VHB  
 PEORIA COUNTY  
 STATION 411+ 32.88

# LOCATION 3      072-0009 BEARINGS FOR WIDENING BEAM ALL SPANS

STATE OF ILLINOIS  
DEPARTMENT OF PUBLIC WORKS & BUILDINGS  
DIVISION OF HIGHWAYS

SHEET NO. 20	31 SHEETS
DATE: 6/20/10	DESIGNER: R.S.G.
DRAWN: J.M.R.	CHECKED: J.M.R.
PROJECT: 072-0009	CONTRACT NO. 68975



**NOTE A**  
1 1/2" Holes - 1" deep in top R. for pintles. Thread or press fit pintles into bottom R.

**NOTE B**  
1 1/2" Holes for 1/2" anchor bolts. 2 1/2" x 2 1/2" x 1/8" R. Washers under nut.

**NOTE C**  
1 1/2" Holes, 1" deep in top R. only for 1/4" purlins.

**NOTES ON SETTING OF ANCHOR BOLTS AT EXP. BRGS.**

- a) D\* (Side of brg. away from fixed brg.)  
D\* = 1/8" per each 100' of expansion for every 15° fall below the normal temp. of 50°F.
- D\*\* (Side of brg. toward fixed brg.)  
D\*\* = 1/8" per each 100' of expansion for every 15° rise above the normal temp. of 50°F.
- b) After beams have been erected and dimensions D\* or D\*\* determined, holes shall be drilled and anchor bolts shall be grouted in place. All fixed anchor bolts may be built into the masonry.

**BEARING ASSEMBLY DETAILS**

**WIDENING**  
**BEARING DETAILS**  
F.A. RTE. 10      SEC. 45 VHB-1  
PEORIA COUNTY  
STATION: 411+32.88  
DESIGNED: R.S.G.  
DATE: 7-18-70

FILE NAME =	USER NAME = inglistj	DESIGNED -	REVISED -	STATE OF ILLINOIS DEPARTMENT OF TRANSPORTATION	SCALE:	SHEET NO. OF SHEETS	STA. TO STA.	F.A. RTE.	SECTION	COUNTY	TOTAL SHEETS	SHEET NO.
Copy of 68398.dgn		DRAWN -	REVISED -	DEPARTMENT OF TRANSPORTATION					(45-VHB-1)-1,2,23-BR-1	Peoria	15	15
		PLOT SCALE = 1/8" = 1' / IN.	CHECKED -								CONTRACT NO. 68975	
		PLOT DATE = 3/25/2010	DATE -								ILLINOIS FED. AID PROJECT	