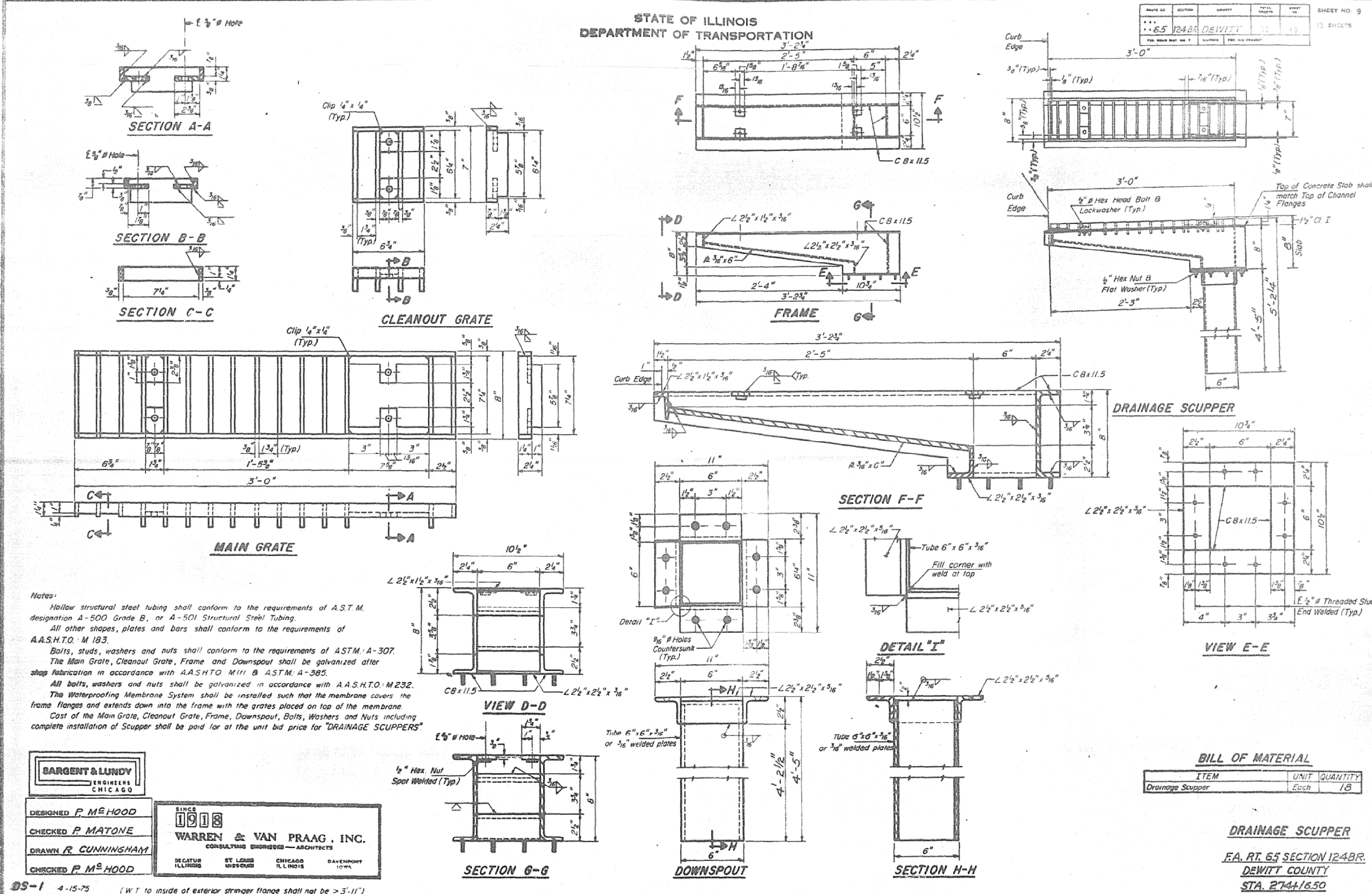


# AS-BUILT PLANS FOR INFORMATION ONLY

STATE OF ILLINOIS  
DEPARTMENT OF TRANSPORTATION

PROJECT NO.	SECTION	SHEET NO.	TOTAL SHEETS	SHEET NO.
65	124 BR	DEWITT	18	15
SHEETS				



**Notes:**  
 Hollow structural steel tubing shall conform to the requirements of A.S.T.M. designation A-500 Grade B, or A-501 Structural Steel Tubing.  
 All other shapes, plates and bars shall conform to the requirements of A.A.S.H.T.O. M 183.  
 Bolts, studs, washers and nuts shall conform to the requirements of ASTM: A-307.  
 The Main Grate, Cleanout Grate, Frame and Downspout shall be galvanized after shop fabrication in accordance with A.A.S.H.T.O. M 111 & ASTM: A-385.  
 All bolts, washers and nuts shall be galvanized in accordance with A.A.S.H.T.O. M 232.  
 The Waterproofing Membrane System shall be installed such that the membrane covers the frame flanges and extends down into the frame with the grates placed on top of the membrane.  
 Cost of the Main Grate, Cleanout Grate, Frame, Downspout, Bolts, Washers and Nuts including complete installation of Scupper shall be paid for at the unit bid price for "DRAINAGE SCUPPERS".

**SARGENT & LUNDY**  
ENGINEERS  
CHICAGO

DESIGNED **P. McHOOD**  
 CHECKED **P. MATONE**  
 DRAWN **R. CUNNINGHAM**  
 CHECKED **P. McHOOD**

SINCE 1918  
**WARREN & VAN PRAAG, INC.**  
 CONSULTING ENGINEERS - ARCHITECTS  
 DECATUR ILLINOIS ST. LOUIS MISSOURI CHICAGO ILLINOIS DAVENPORT IOWA

DS-1 4-15-75 (WT to inside of exterior stringer flange shall not be > 3'-11")

**BILL OF MATERIAL**

ITEM	UNIT	QUANTITY
Drainage Scupper	Each	18

**DRAINAGE SCUPPER**  
 F.A. RT. 65 SECTION 124 BR.  
 DEWITT COUNTY  
 STA. 2744/650

FILE NAME =	USER NAME =	DESIGNED -	REVISED -
c:\pwork\VPIDDT\SIMSGM\d8179794\05705	simgm	GMS	---
PLOT SCALE = 41.6516 / IN.	31-sht-Bridge Repair Plans.dgn	DRAWN -	REVISED -
PLOT DATE = 2/19/2010		GMS	---
		CHECKED -	REVISED -
		---	---
		DATE -	REVISED -
		---	---

**STATE OF ILLINOIS  
DEPARTMENT OF TRANSPORTATION**

<b>AS-BUILT PLANS FOR INFORMATION ONLY</b>	
SCALE: -----	SHEET NO. 15 OF 16 SHEETS
STA. -----	TO STA. -----

F.A.P. RTE.	SECTION	COUNTY	TOTAL SHEETS	SHEET NO.
760	124 BR-1	DEWITT	23	18
CONTRACT NO. 70531				
FED. ROAD DIST. NO. - ILLINOIS / FED. AID PROJECT				