

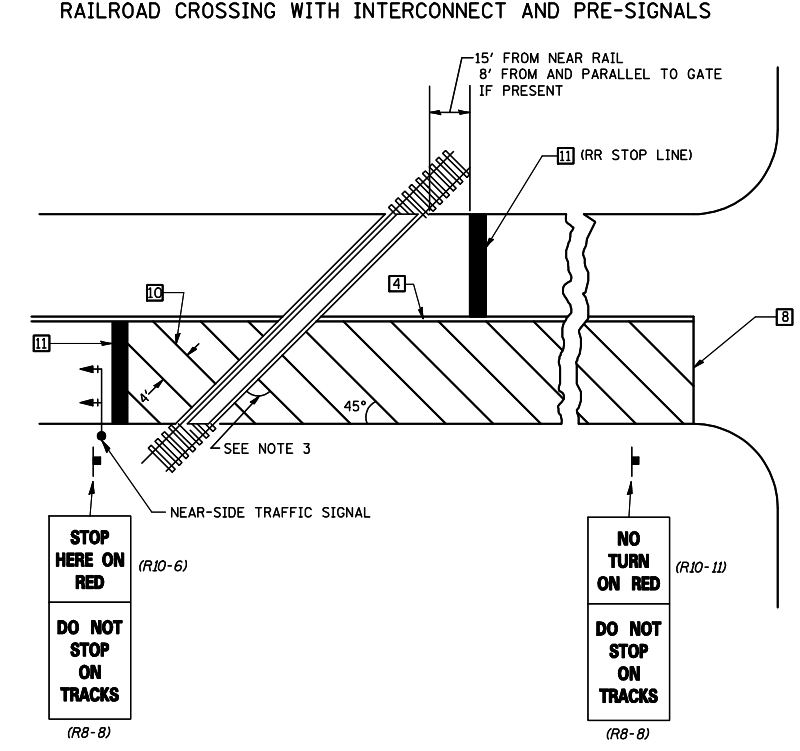
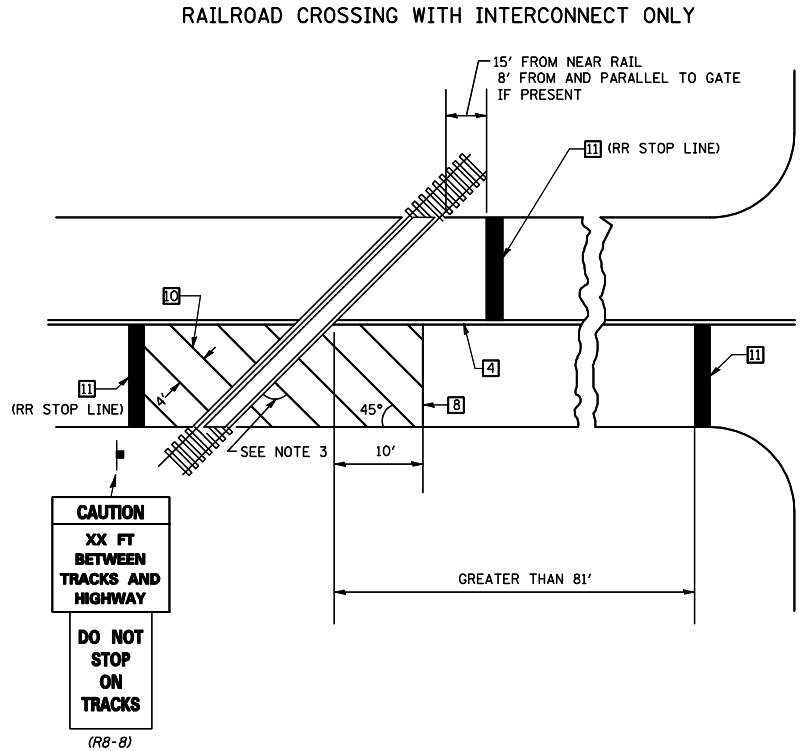
**PAVEMENT MARKINGS AT RAILROAD-HIGHWAY GRADE CROSSING**

**NOTES**

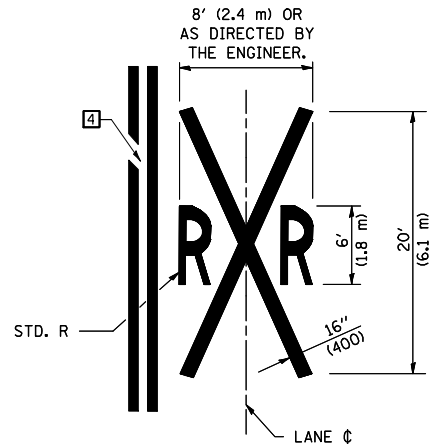
THE TRAVERSE SPREAD OF THE "X" MAY VARY ACCORDING TO LANE WIDTH.

ON MULTI-LANE ROADS, THE STOP LINES SHALL EXTEND ACROSS ALL APPROACH LANES AND SEPARATE RXR SYMBOLS SHALL BE PLACED ADJACENT TO EACH OTHER IN EACH LANE.

WHEN THE PAVEMENT MARKING SYMBOL IS USED, A PORTION OF THE SYMBOL SHOULD BE LOCATED DIRECTLY ADJACENT TO THE ADVANCE WARNING SIGN (W10-1) AS PLACED BY TABLE II-1, CONDITION B OF THE MUTCD.



**SUPPLEMENTAL PAVEMENT MARKING TREATMENT FOR RAILROAD-HIGHWAY GRADE CROSSING**



**GENERAL NOTES**

- SUPPLEMENTAL PAVEMENT MARKINGS TO BE INSTALLED ONLY ON APPROACHES TO INTERSECTIONS CONTROLLED BY TRAFFIC SIGNALS WHICH ARE INTERCONNECTED WITH THE RAILROAD WARNING SIGNALS.
- EXTEND PAVEMENT MARKINGS TO THE INTERSECTION ONLY WHERE NEAR-SIDE TRAFFIC SIGNALS ARE USED.
- WHERE THE ANGLE BETWEEN THE DIAGONAL PAVEMENT MARKINGS AND THE TRACK WOULD BE LESS THAN 20°, THE PAVEMENT MARKINGS SHOULD BE PLACED IN THE OPPOSITE DIRECTION FROM THAT SHOWN.

Note: All dimensions are in INCHES (millimeters) unless otherwise shown.

FILE NAME =	USER NAME = s1msgm	DESIGNED -	REVISED - 11/06
ct:\pwork\PWIDOT\S1MSGM\d8179794\05708	31-sht-Bridge Repair Plans.dgn	DRAWN -	REVISED - 09/2009 - KJI
	PLOT SCALE = 41.6516' / IN.	CHECKED -	REVISED -
	PLOT DATE = 2/19/2010	DATE -	REVISED -

**STATE OF ILLINOIS DEPARTMENT OF TRANSPORTATION**

**PAVEMENT MARKING AND MARKERS (RURAL & URBAN APPLICATIONS)**

SCALE: \_\_\_\_\_ SHEET NO. 4 OF 4 SHEETS STA. \_\_\_\_\_ TO STA. \_\_\_\_\_

<b>DISTRICT 5 DETAIL NO. 7800AAAA</b>				
F.A.P. RTE.	SECTION	COUNTY	TOTAL SHEETS	SHEET NO.
760	124 BR-1	DEWITT	23	23
CONTRACT NO. 70531				
FED. ROAD DIST. NO. - ILLINOIS FED. AID PROJECT				