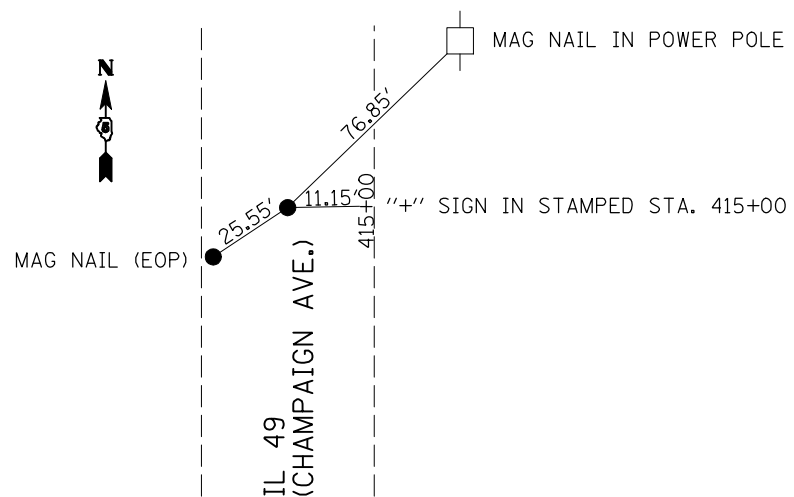
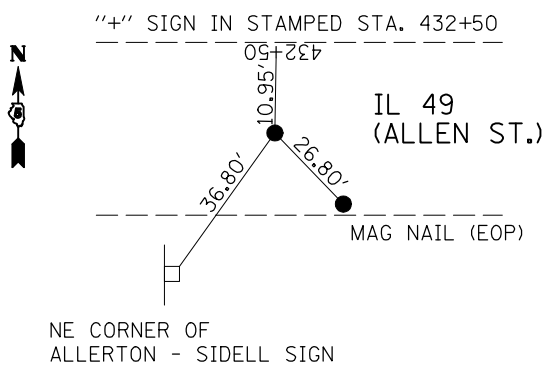


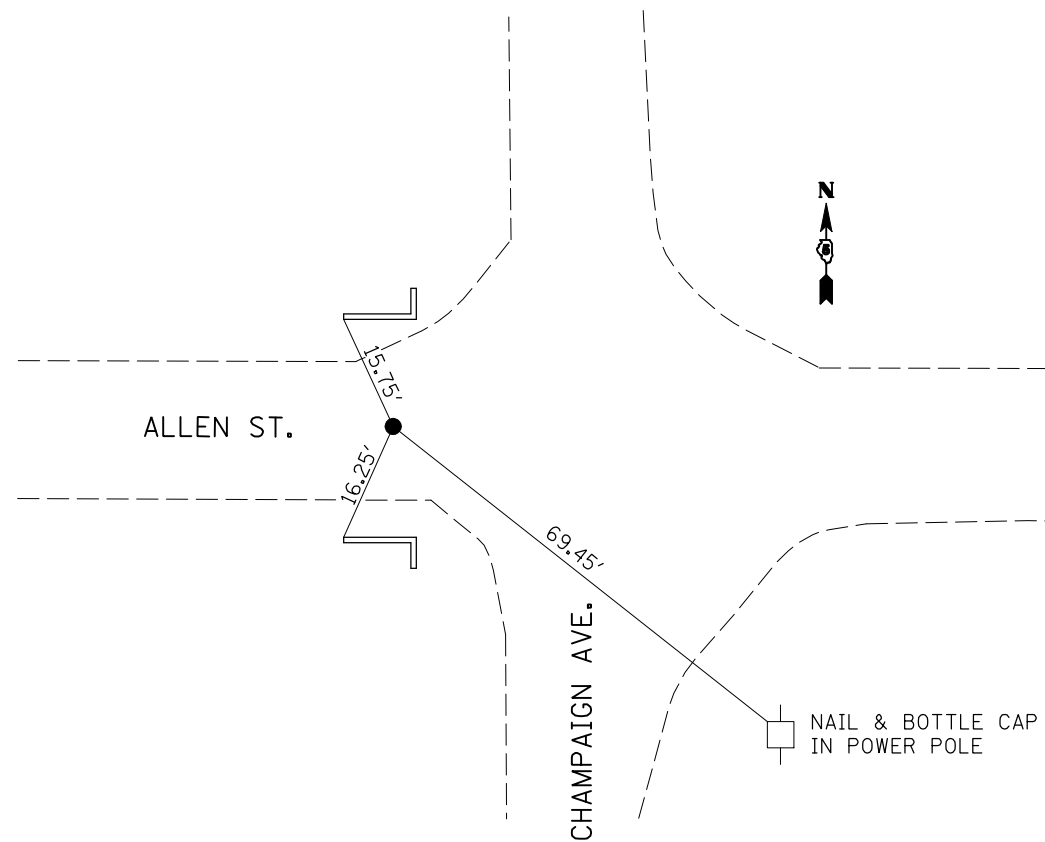
CENTERLINE RECOVERY TIE POINTS



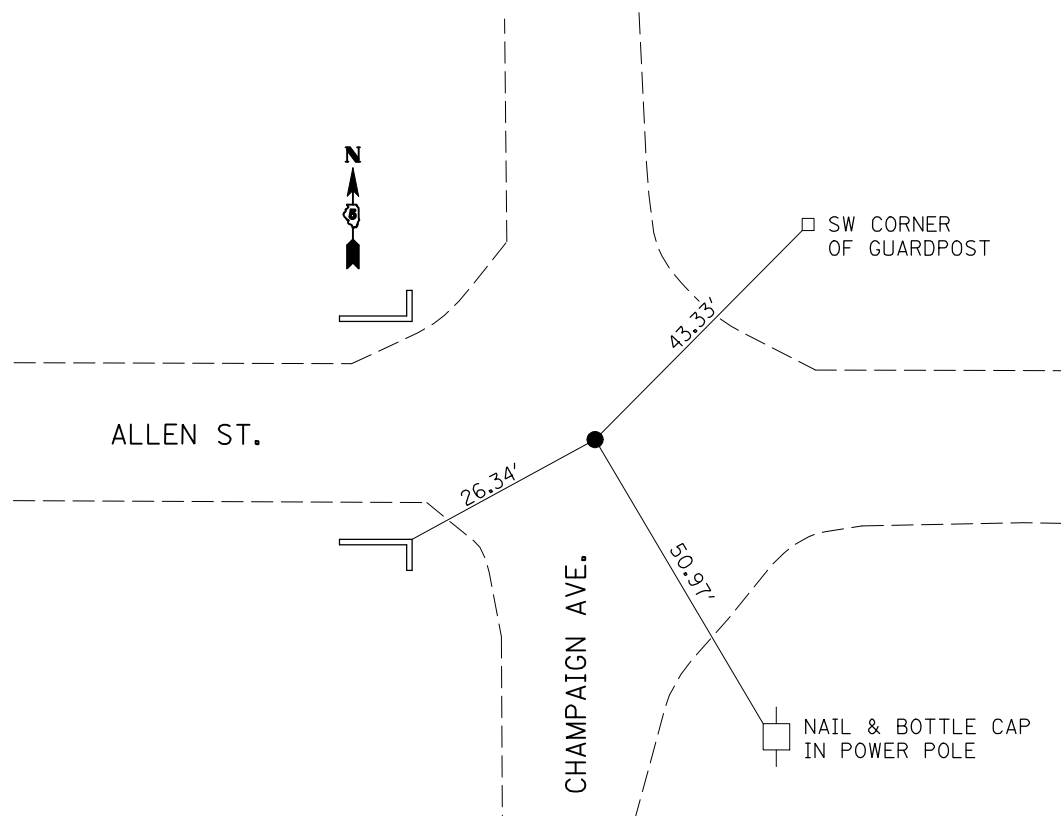
P.O.T. #1 - STATION 415+04.62 (MAG NAIL)



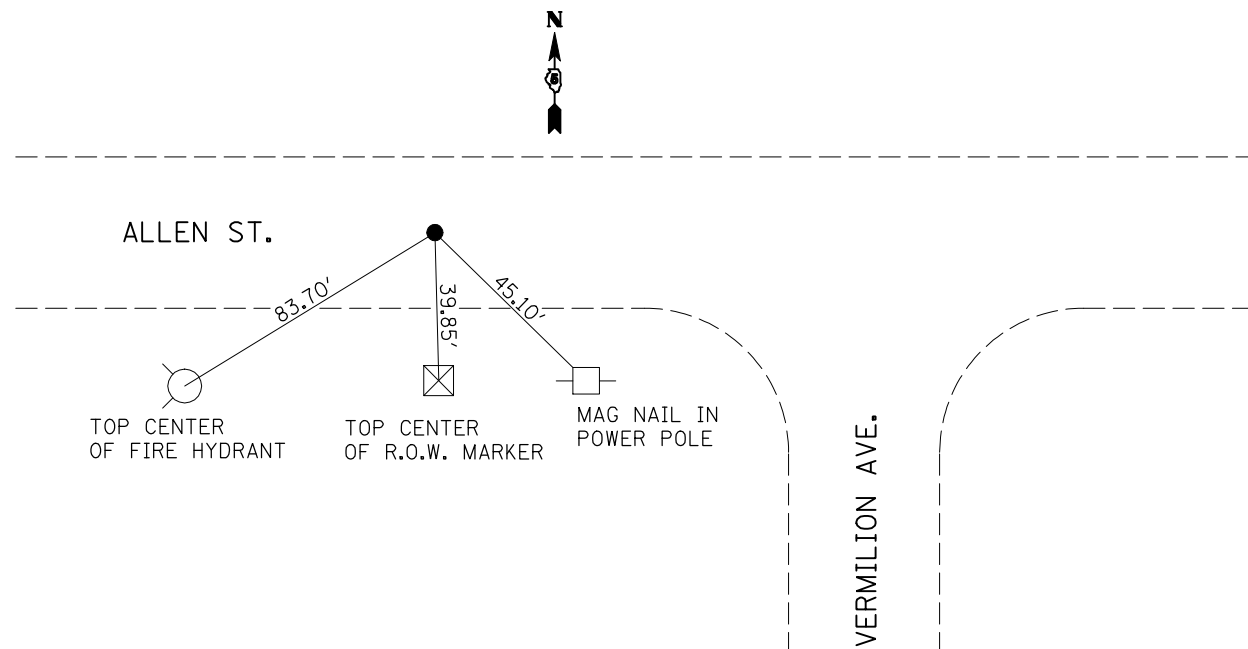
P.O.T. #6 - STATION 348+31.58 (MAG NAIL)



**P.O.T. #17 - STATION 356+30.00 (MAG NAIL)
BASIS OF STATIONING (ALLEN STREET)**



**INT #60 - STATION 356+56.53 (ALLEN STREET - MAG NAIL)
STATION 426+46.50 (CHAMPAIGN AVENUE)**



P.O.T. #9 - STATION 360+52.72 (MAG NAIL)

FILE NAME =	USER NAME = hennessdm	DESIGNED - D. HENNESS	REVISED -
ct:\pw\work\PWIDOT\HENNESSDM\dms86853\70619\PLANS.DGN		DRAWN - CADD	REVISED -
	PLOT SCALE = 40.0000' / IN.	CHECKED -	REVISED -
	PLOT DATE = 3/1/2010	DATE -	REVISED -

**STATE OF ILLINOIS
DEPARTMENT OF TRANSPORTATION**

CENTERLINE RECOVERY TIE POINTS

SCALE: SHEET NO. OF SHEETS STA. TO STA.

F.A.S. RTE.	SECTION	COUNTY	TOTAL SHEETS	SHEET NO.
514	81-15D,CR	CHAMPAIGN	30	7
FED. ROAD DIST. NO. ILLINOIS FED. AID PROJECT			CONTRACT NO. 70619	