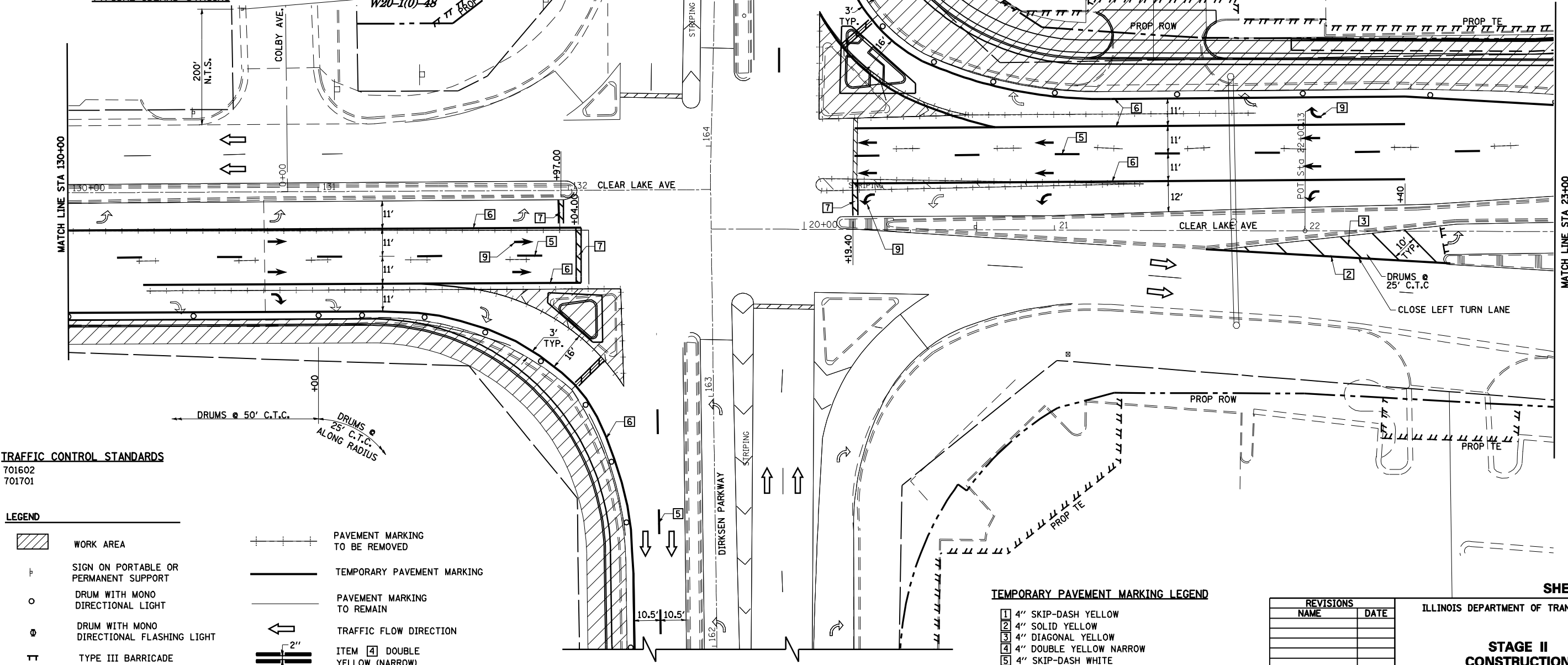
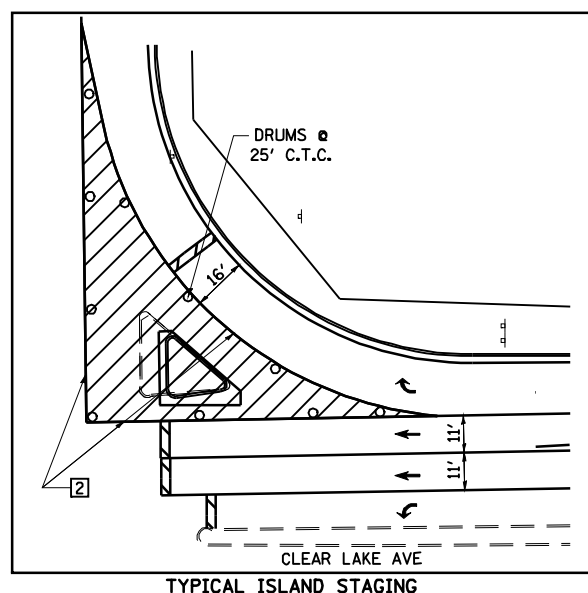
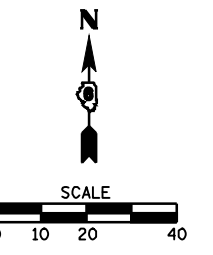


F.A.P. 72, F.A.P. 67, F.A.P. 75 & F.A.P. 668
 D-6 SPFLD-CLRLAKE DIRKSEN 2002

F.A.P. RTE.	SECTION	COUNTY	TOTAL SHEETS	SHEET NO.
•	••	SANGAMON	363	36
STA. TO STA.		ILLINOIS FED. AID PROJECT		
FED. ROAD DIST. NO.		CONTRACT NO. 72088		



TRAFFIC CONTROL STANDARDS
 701602
 701701

LEGEND

- | | | | |
|--|---|--|---------------------------------|
| | WORK AREA | | PAVEMENT MARKING TO BE REMOVED |
| | SIGN ON PORTABLE OR PERMANENT SUPPORT | | TEMPORARY PAVEMENT MARKING |
| | DRUM WITH MONO DIRECTIONAL LIGHT | | PAVEMENT MARKING TO REMAIN |
| | DRUM WITH MONO DIRECTIONAL FLASHING LIGHT | | TRAFFIC FLOW DIRECTION |
| | TYPE III BARRICADE | | ITEM [4] DOUBLE YELLOW (NARROW) |
- 6' TYP 2' TYP 10' TYP 30' TYP 10' TYP

TEMPORARY PAVEMENT MARKING LEGEND

- 1 4" SKIP-DASH YELLOW
- 2 4" SOLID YELLOW
- 3 4" DIAGONAL YELLOW
- 4 4" DOUBLE YELLOW NARROW
- 5 4" SKIP-DASH WHITE
- 6 4" SOLID WHITE
- 7 24" STOP BAR WHITE
- 8 4" DIAGONAL WHITE
- 9 LETTERS & SYMBOLS

REVISIONS	
NAME	DATE

SHEET 4 OF 34

ILLINOIS DEPARTMENT OF TRANSPORTATION

STAGE II CONSTRUCTION

SCALE: VERT. DRAWN BY NJV
 DATE HORIZ. 1/05 CHECKED BY CWG