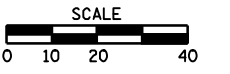
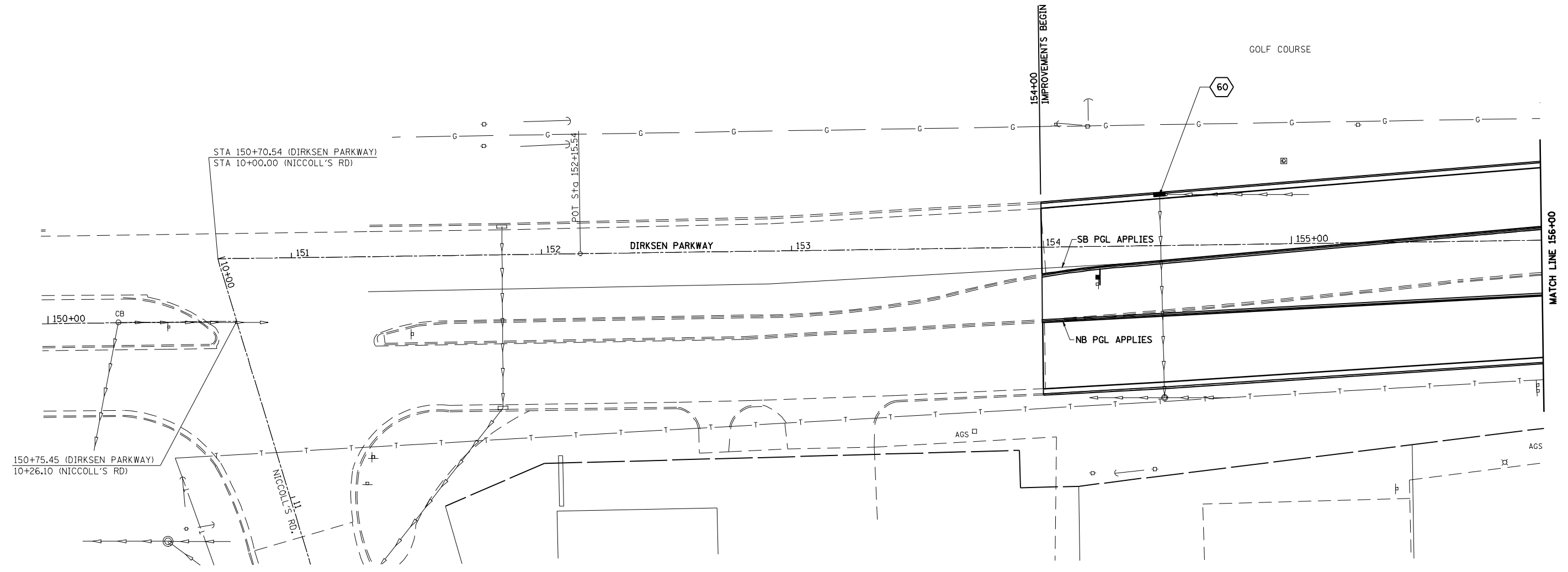


• F.A.I. 72, F.A.P. 67, F.A.P. 75 & F.A.P. 668
 ** D-6 SPFLD-CLRLAKE DIRKSEN 2002

F.A. RTE.	SECTION	COUNTY	TOTAL SHEETS	SHEET NO.
*	**	SAGAMON	363	119
STA. 150+00.00		TO STA. 156+00.00		
FED. ROAD DIST. NO.		ILLINOIS FED. AID PROJECT		
CONTRACT NO. 72088				



60 STA. 154+47.49, 20.45' LT
 INLET TO BE ADJUSTED
 TY 3, F&G
 EOP EL=575.88



150+75.45 (DIRKSEN PARKWAY)
 10+26.10 (NICCOLL'S RD)

STA 150+70.54 (DIRKSEN PARKWAY)
 STA 10+00.00 (NICCOLL'S RD)

DIRKSEN PARKWAY

MATCH LINE 156+00

SB PGL APPLIES
 NB PGL APPLIES

GOLF COURSE

154+00
 IMPROVEMENTS BEGIN

DIRKSEN PARKWAY