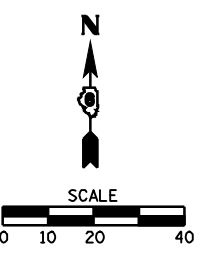


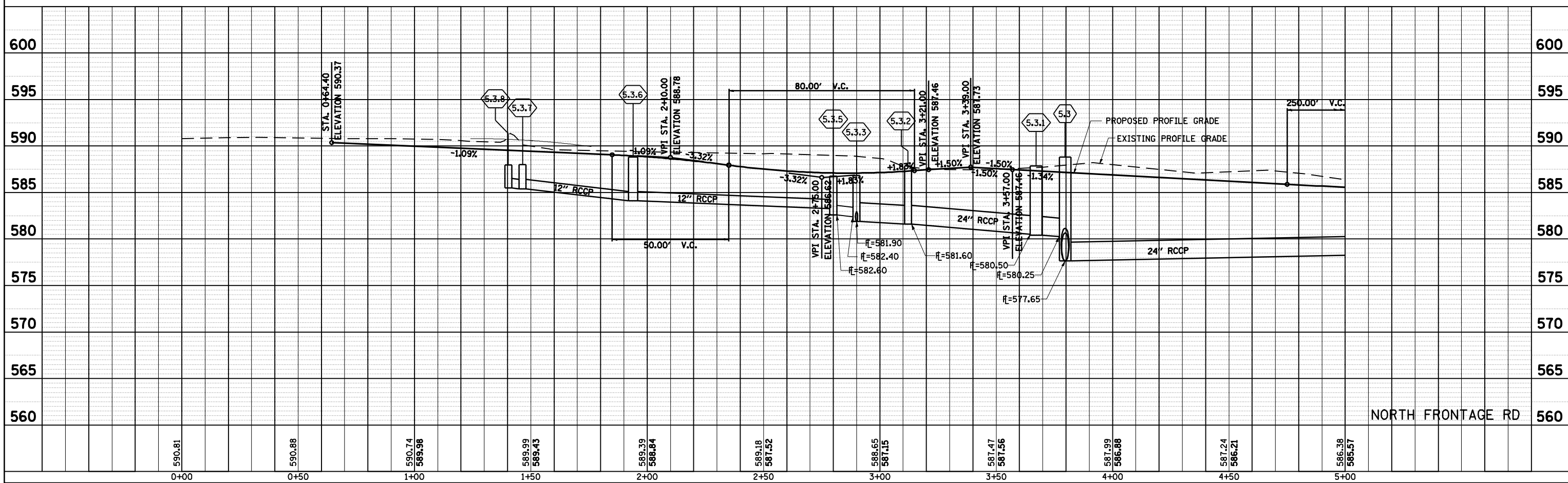
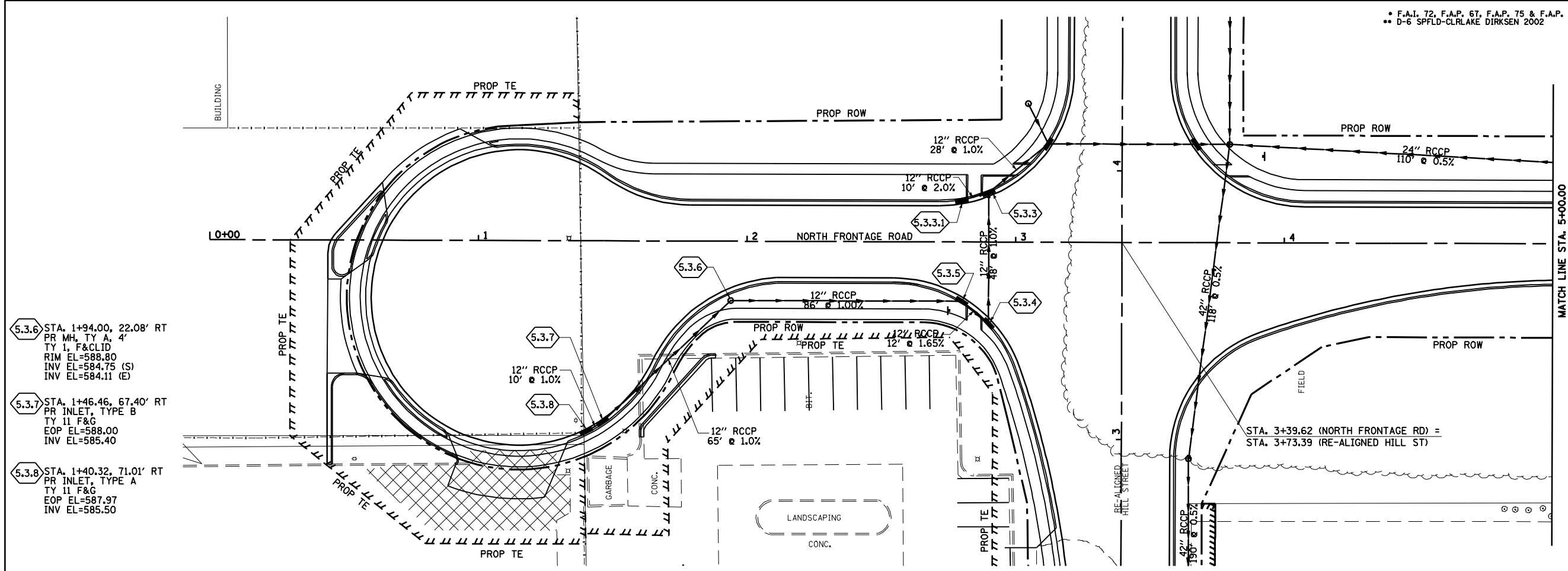
F.A.I. 72, F.A.P. 67, F.A.P. 75 & F.A.P. 668  
 \*\* D-6 SPFLD-CLRLAKE DIRKSEN 2002

F.A. RTE.	SECTION	COUNTY	TOTAL SHEETS	SHEET NO.
*	**	SANGAMON	363	130
STA. 0+00.00		TO STA. 5+00.00		
FED. ROAD DIST. NO.		ILLINOIS FED. AID PROJECT		
CONTRACT NO. 72088				



PLAN	SURVEYED	DATE
NO.	BY	

PROFILE	SURVEYED	DATE
NO.	BY	



STATION	ELEVATION
0+00	590.81
0+50	590.88
1+00	590.74
1+50	589.99
2+00	589.39
2+50	589.18
3+00	588.65
3+50	587.47
4+00	587.99
4+50	587.24
5+00	586.38

BLANK, WESSELINK, COOK & ASSOCIATES

ENGINEERS - CONSULTANTS  
 DECATUR, ILLINOIS

D-6 SPFLD-CLRLAKE DIRKSEN 2002

SANGAMON COUNTY