

F.A.P. RTE.	SECTION	COUNTY	TOTAL SHEETS	SHEET NO.
*	**	SANGAMON	363	215C
STA.		TO STA.		
FED. ROAD DIST. NO.		ILLINOIS FED. AID PROJECT		
CONTRACT NO. 72088				



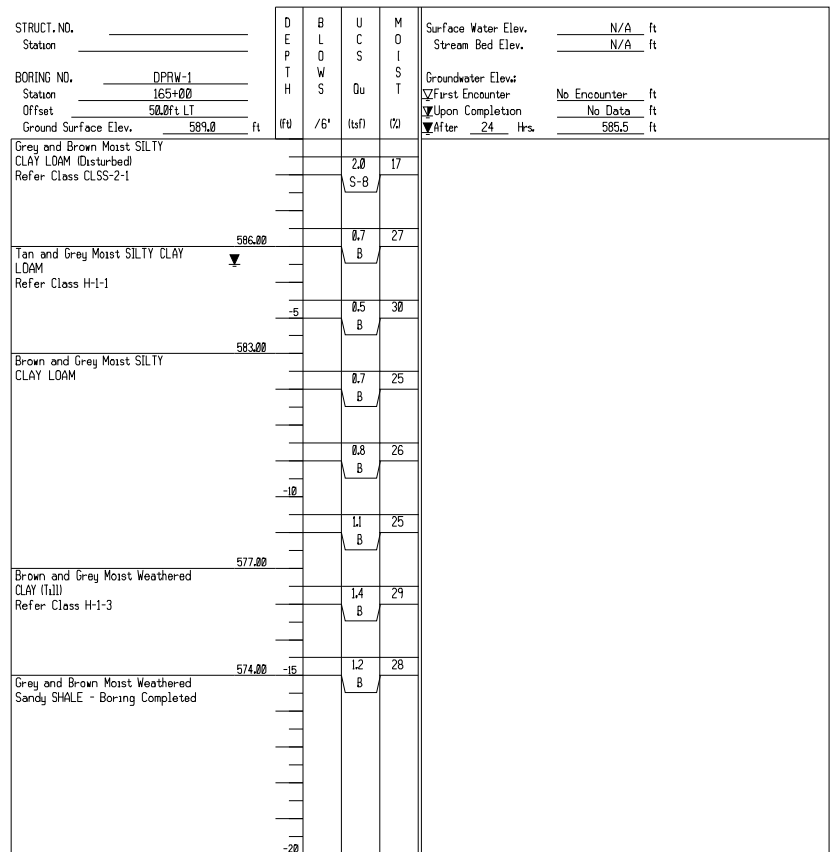
Illinois Department of Transportation  
 Division of Highways  
 District 6

SOIL BORING LOG

Page 1 of 1

Date 9/6/06

ROUTE Clear Lake-Dirksen DESCRIPTION Dirksen Parkway Retaining Wall LOGGED BY M. Tappan  
 SECTION D-6 Spfld-Clearlake LOCATION S 1/4, SEC. 25, TWP. 16 N, RNG. 5 W, 3 PM  
 COUNTY Sangamon DRILLING METHOD Push Split Spoon HAMMER TYPE N/A



File Name: S:\GIS\SOIL\FILES\SANGAMON\CLRLAKE DIRKSEN\2002\165+00\DIRKSEN\2002\165+00.DWG Date Printed: 1/25/08  
 Lantier Longshore, District Manager, Job Number: P-36-208-97

The Unconfined Compressive Strength (UCS) Failure Mode is indicated by (B)-Bulge, (S)-Shear, (P)-Penetrometer, (E)-Estimated  
 Abbreviations: W.O.H. - Sampler Advanced By Weight of Hammer, W.O.P. - Advanced by Weight of Pipe, B.S. - Before Seating  
 The SPT (N value) is the sum of the last two blow values in each sampling zone (ASTM D 1586) BBS, from 137 (Rev. 8-99)



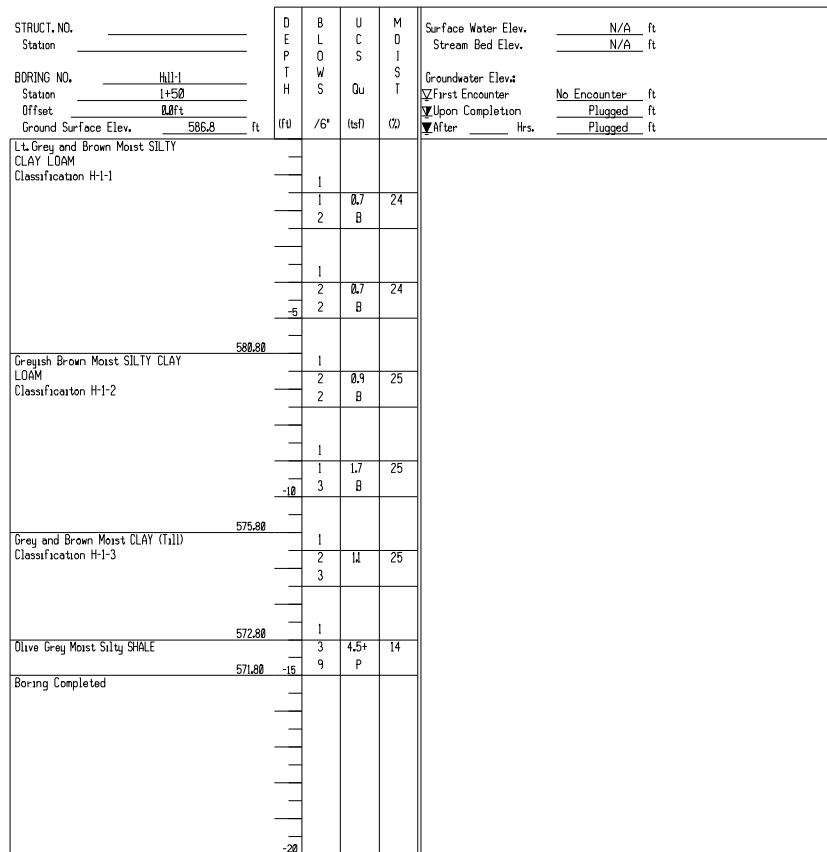
Illinois Department of Transportation  
 Division of Highways  
 District 6

SOIL BORING LOG

Page 1 of 1

Date 8/31/06

ROUTE Clear Lake-Dirksen DESCRIPTION Relocated Hill Street LOGGED BY M. Tappan  
 SECTION D-6 Spfld-Clearlake LOCATION S 1/4, SEC. 25, TWP. 16 N, RNG. 5 W, 3 PM  
 COUNTY Sangamon DRILLING METHOD HSA HAMMER TYPE Auto



File Name: S:\GIS\SOIL\FILES\SANGAMON\CLRLAKE DIRKSEN\2002\1+50\DIRKSEN\2002\1+50.DWG Date Printed: 1/25/08  
 Lantier Longshore, District Manager, Job Number: P-36-208-97

The Unconfined Compressive Strength (UCS) Failure Mode is indicated by (B)-Bulge, (S)-Shear, (P)-Penetrometer, (E)-Estimated  
 Abbreviations: W.O.H. - Sampler Advanced By Weight of Hammer, W.O.P. - Advanced by Weight of Pipe, B.S. - Before Seating  
 The SPT (N value) is the sum of the last two blow values in each sampling zone (ASTM D 1586) BBS, from 137 (Rev. 8-99)



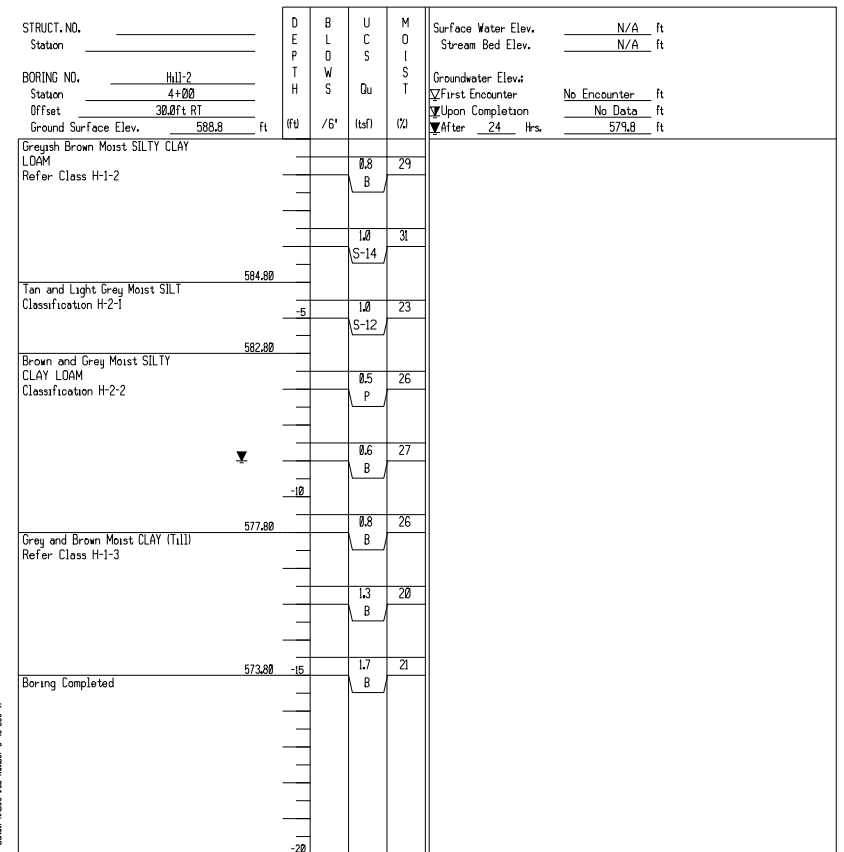
Illinois Department of Transportation  
 Division of Highways  
 District 6

SOIL BORING LOG

Page 1 of 1

Date 11/21/06

ROUTE Clear Lake-Dirksen DESCRIPTION Relocated Hill Street LOGGED BY M. Tappan  
 SECTION D-6 Spfld-Clearlake LOCATION S 1/4, SEC. 25, TWP. 16 N, RNG. 5 W, 3 PM  
 COUNTY Sangamon DRILLING METHOD Push Split Spoon HAMMER TYPE N/A



File Name: S:\GIS\SOIL\FILES\SANGAMON\CLRLAKE DIRKSEN\2002\4+00\DIRKSEN\2002\4+00.DWG Date Printed: 1/25/08  
 Lantier Longshore, District Manager, Job Number: P-36-208-97

The Unconfined Compressive Strength (UCS) Failure Mode is indicated by (B)-Bulge, (S)-Shear, (P)-Penetrometer, (E)-Estimated  
 Abbreviations: W.O.H. - Sampler Advanced By Weight of Hammer, W.O.P. - Advanced by Weight of Pipe, B.S. - Before Seating  
 The SPT (N value) is the sum of the last two blow values in each sampling zone (ASTM D 1586) BBS, from 137 (Rev. 8-99)

REVISIONS	
NAME	DATE

ILLINOIS DEPARTMENT OF TRANSPORTATION  
**DRAINAGE STRUCTURE BORINGS**  
 SCALE: NONE  
 DATE 02/06  
 DRAWN BY MLO  
 CHECKED BY CWG