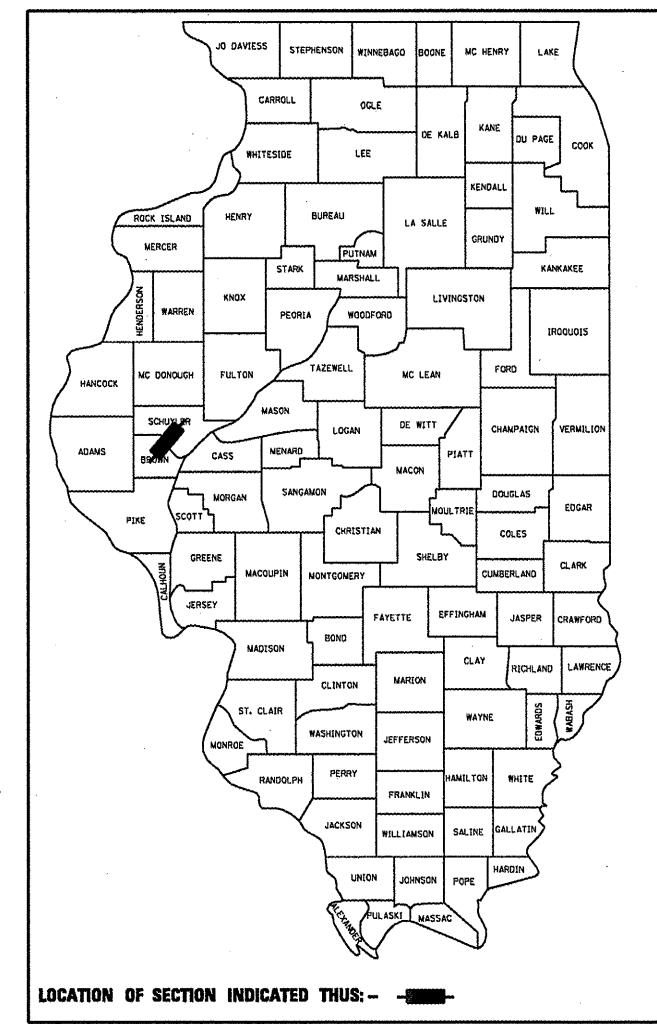


STATE OF ILLINOIS
DEPARTMENT OF TRANSPORTATION
DIVISION OF HIGHWAYS

F.A.P. RTE.	SECTION	COUNTY	TOTAL SHEETS	SHEET NO.
317	**	*	196	1
FED. ROAD DIST. NO.	ILLINOIS	CONTRACT NO. 72432		
* BROWN & SCHUYLER				
** 9RS-4, (10,11) RS-3; (10B-1) R				

D-96-535-00



LOCATION OF SECTION INDICATED THIS: - [shaded area] -

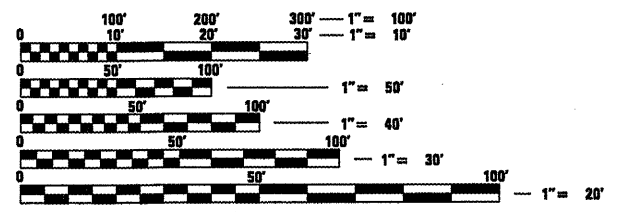
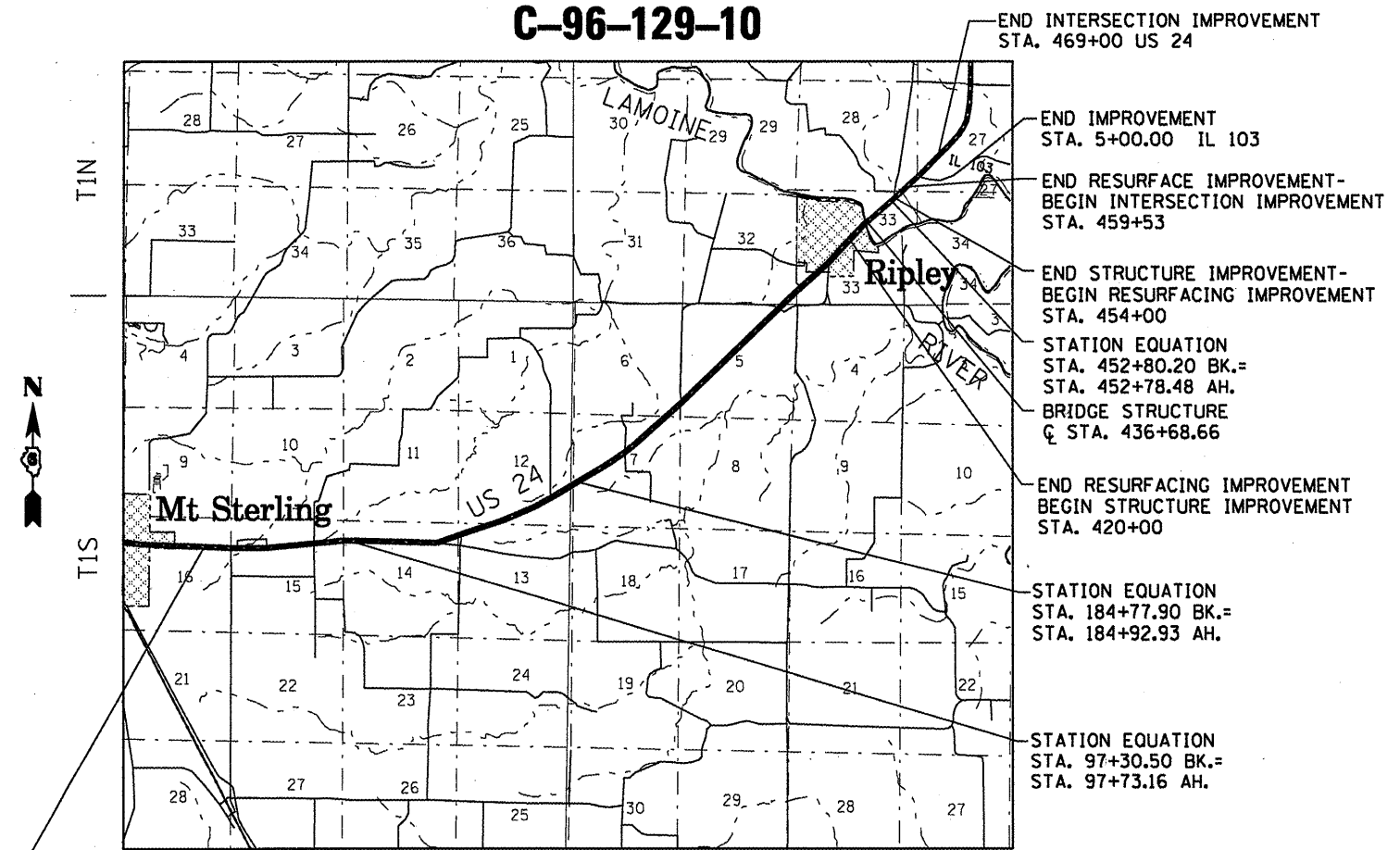
FOR INDEX OF SHEETS, SEE SHEET NO. 2
 FOR HIGHWAY STANDARDS, SEE SHEET NO. 2

PROPOSED
HIGHWAY PLANS

F.A.P. ROUTE 317 (US24)
SECTION 9RS-4, (10,11) RS-3; (10B-1) R

BROWN & SCHUYLER COUNTIES
C-96-129-10

HIGHWAY CLASSIFICATION = OTHER PRINCIPAL ARTERIAL
 ADT: 3005 (YD 2009)
 MU = 6.0%
 SU = 12.0%
 NOTE: ADT IS AVERAGED OVER PROJECT LIMITS



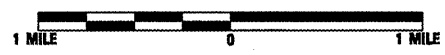
FULL SIZE PLANS HAVE BEEN PREPARED USING STANDARD ENGINEERING SCALES. REDUCED SIZED PLANS WILL NOT CONFORM TO STANDARD SCALES. IN MAKING MEASUREMENTS ON REDUCED PLANS, THE ABOVE SCALES MAY BE USED.

J.U.L.I.E.
 JOINT UTILITY LOCATION INFORMATION FOR EXCAVATION
 1-800-892-0123
 OR 811

PROJECT ENGINEER SAL MADONIA 217-782-4621
 PROJECT MANAGER KEN ANDERSON 217-524-7546

CONTRACT NO. 72432

LOCATION MAP



GROSS LENGTH OF SECTION = 41695.06 FT = 7.897 MILES
 NET LENGTH OF SECTION = 41695.06 FT = 7.897 MILES

STATE OF ILLINOIS
 DEPARTMENT OF TRANSPORTATION
 DIVISION OF HIGHWAYS

SUBMITTED Mar 26 2010
Ron J. Oak
 DEPUTY DIRECTOR OF HIGHWAYS, REGION ENGINEER

May 7 2010
Scott E. Stitt, P.E.
 acting ENGINEER OF DESIGN AND ENVIRONMENT

May 7 2010
Christine M. Reed
 DIRECTOR OF HIGHWAYS, CHIEF ENGINEER

PRINTED BY THE AUTHORITY
OF THE STATE OF ILLINOIS