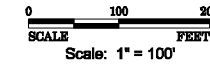


STATE OF ILLINOIS  
DEPARTMENT OF TRANSPORTATION



F.A.P. RTE.	SECTION	COUNTY	TOTAL SHEETS	SHEET NO.
317	**	*	196	76

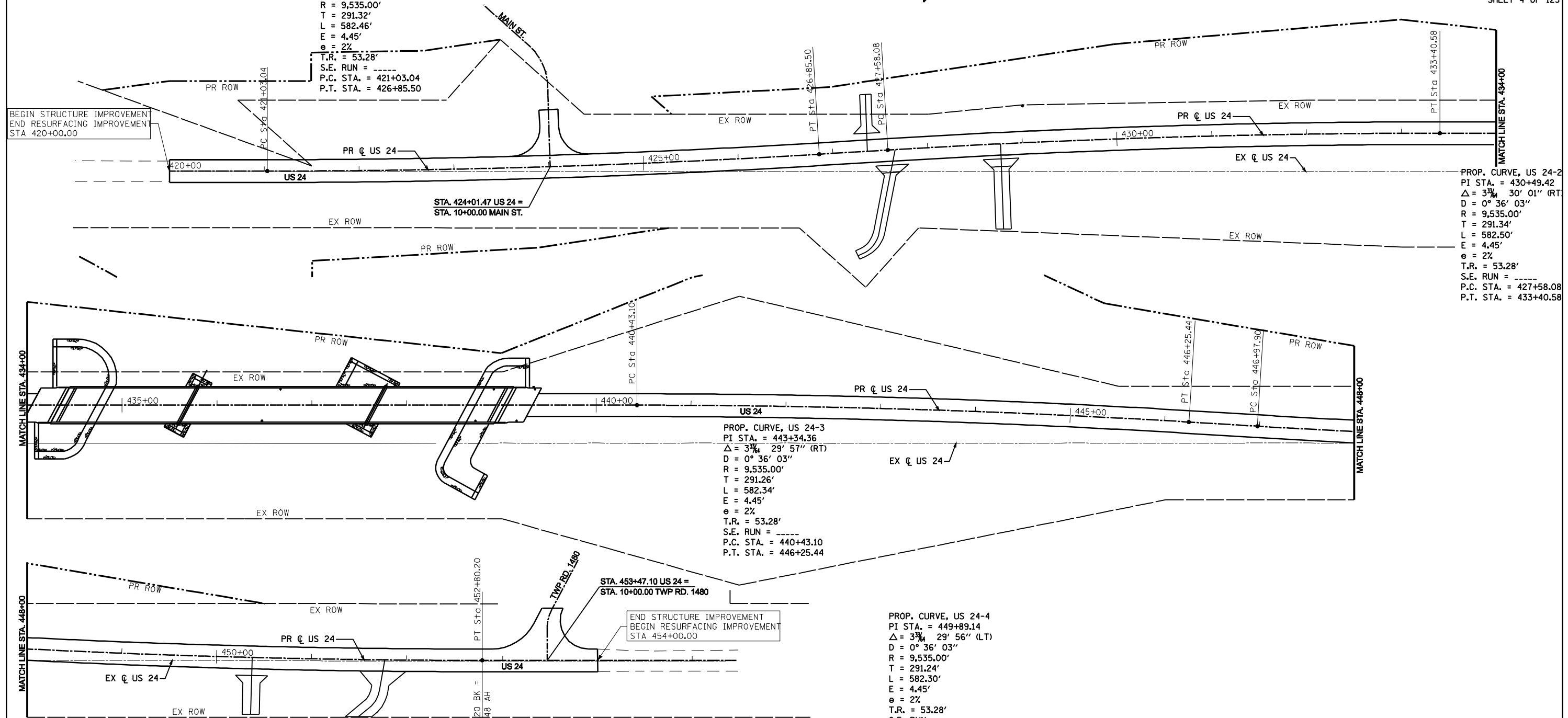
STA. 420+00.00 TO STA. 454+00.00

FED. ROAD DIST. NO.	ILLINOIS	FED. AID PROJECT
** 9RS-4, (10,11) RS-3; (10B-1) R		

\* BROWN & SCHUYLER CONTRACT NO. 72432  
\*\* 9RS-4, (10,11) RS-3; (10B-1) R  
SHEET 4 OF 123

PROP. CURVE, US 24-1  
PI STA. = 423+94.36  
 $\Delta = 3\frac{3}{4} \text{ } 30' 00''$  (LT)  
D =  $0^\circ 36' 03''$   
R = 9,535.00'  
T = 291.32'  
L = 582.46'  
E = 4.45'  
 $e = 2\%$   
T.R. = 53.28'  
S.E. RUN = -----  
P.C. STA. = 421+03.04  
P.T. STA. = 426+85.50

BEGIN STRUCTURE IMPROVEMENT  
END RESURFACING IMPROVEMENT  
STA 420+00.00



PROP. CURVE, US 24-2  
PI STA. = 430+49.42  
 $\Delta = 3\frac{3}{4} \text{ } 30' 01''$  (RT)  
D =  $0^\circ 36' 03''$   
R = 9,535.00'  
T = 291.34'  
L = 582.50'  
E = 4.45'  
 $e = 2\%$   
T.R. = 53.28'  
S.E. RUN = -----  
P.C. STA. = 427+58.08  
P.T. STA. = 433+40.58

PROP. CURVE, US 24-3  
PI STA. = 443+34.36  
 $\Delta = 3\frac{3}{4} \text{ } 29' 57''$  (RT)  
D =  $0^\circ 36' 03''$   
R = 9,535.00'  
T = 291.26'  
L = 582.34'  
E = 4.45'  
 $e = 2\%$   
T.R. = 53.28'  
S.E. RUN = -----  
P.C. STA. = 440+43.10  
P.T. STA. = 446+25.44

PROP. CURVE, US 24-4  
PI STA. = 449+89.14  
 $\Delta = 3\frac{3}{4} \text{ } 29' 56''$  (LT)  
D =  $0^\circ 36' 03''$   
R = 9,535.00'  
T = 291.24'  
L = 582.30'  
E = 4.45'  
 $e = 2\%$   
T.R. = 53.28'  
S.E. RUN = -----  
P.C. STA. = 446+97.90  
P.T. STA. = 452+80.20

END STRUCTURE IMPROVEMENT  
BEGIN RESURFACING IMPROVEMENT  
STA 454+00.00

EQUATION:  
Sta 452+80.20 BK =  
Sta 452+78.48 AH

NOTE: PLACE PERMANENT SURVEY MARKERS, TYPE I AT ALL P.C.'s AND P.T.'s

HORIZONTAL CONTROL POINTS		
POINT	NORTH	EAST
TRAV. 5000	1222600.7430	2164926.5710
TRAV. 5001	1224992.0070	2167365.8400
PC STA. 421+03.04	1222767.2379	2165068.6860
PT STA. 426+85.50	1223182.3570	2165477.1318
PC STA. 427+58.08	1223235.6204	2165526.4296
PT STA. 433+40.58	1223650.7691	2165934.9063

HORIZONTAL CONTROL POINTS		
POINT	NORTH	EAST
PC STA. 440+43.10	1224136.2555	2166442.6903
PT STA. 446+25.44	1224525.5858	2166875.6265
PC STA. 446+97.90	1224572.3726	2166930.9623
PT STA. 452+80.20	1224961.6734	2167363.8676

BENCHMARKS		
POINT	ELEVATION	DESCRIPTION
BM 3PC	458.50	1976 STANDARD TABLET, EAST OF NORTH CONC. HDWL OF BOX 0.42 MILE NORTH ALONG US 24 FROM LAMOINE RIVER @ STA. 458+27.92 58' LT.
UES26B	477.09	CHISELED " " IN S.E. HUB GUARD OF BRIDGE @ LAMOINE RIVER @ BROWN / SCHUYLER CO. LINE.

**HORIZONTAL & VERTICAL CONTROL**  
SHEET 1 OF 3

US 24 OVER LAMOINE RIVER  
F.A.P. RTE 317 (US RTE 24)  
SECTION 9RS-4, (10,11) RS-3; (10B-1) R  
BROWN & SCHUYLER COUNTY