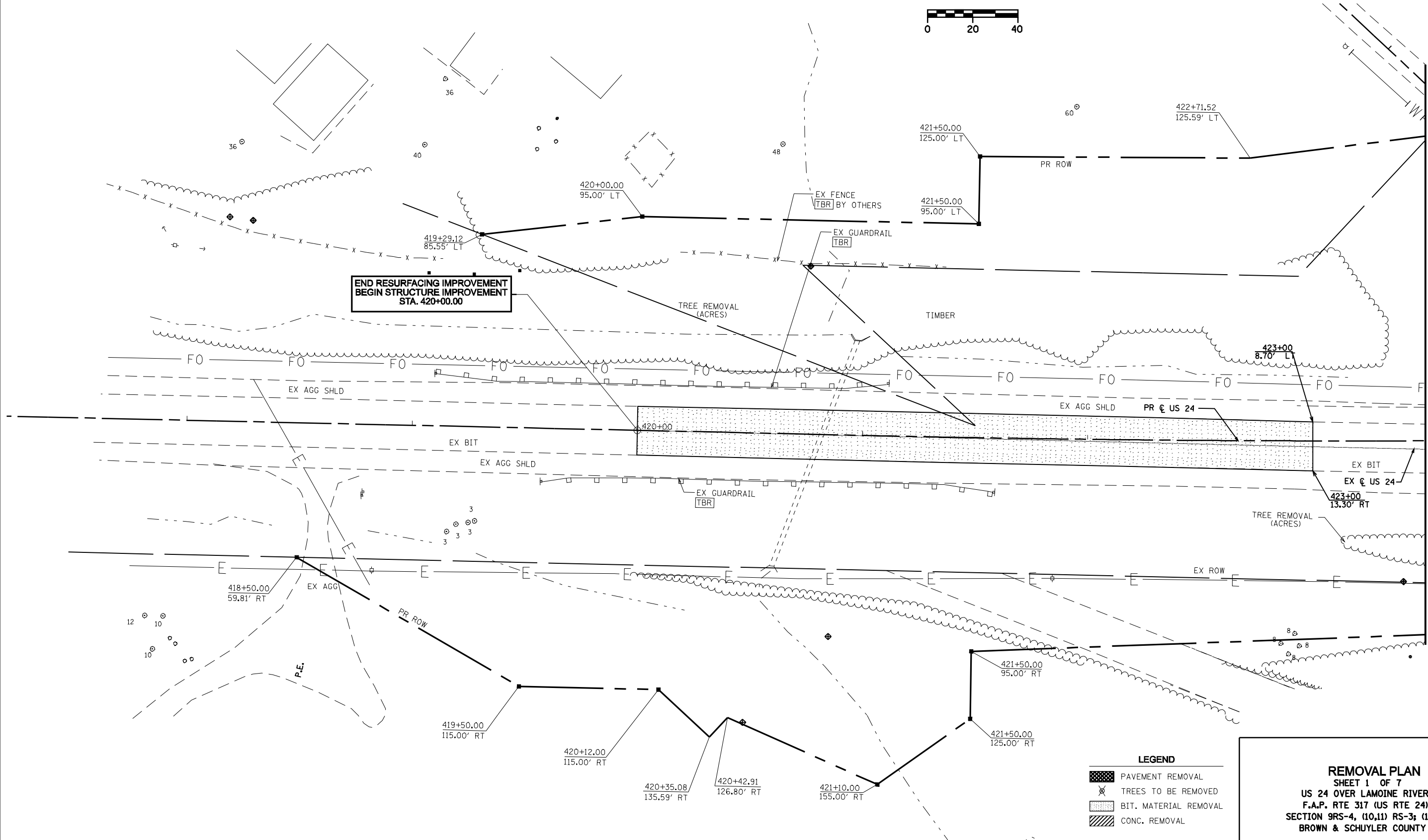
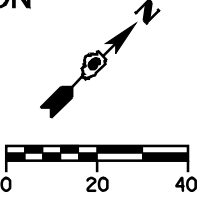


STATE OF ILLINOIS  
DEPARTMENT OF TRANSPORTATION

F.A.P. RTE.	SECTION	COUNTY	TOTAL SHEETS	SHEET NO.
317	**	*	196	83
STA. 418+00 TO STA. 423+50				
FED. ROAD DIST. NO. ILLINOIS FED. AID PROJECT				
* BROWN & SCHUYLER CONTRACT NO. 72432				
** 9RS-4, (10,11) RS-3; (10B-1) R				
SHEET 11 OF 123				



END RESURFACING IMPROVEMENT  
BEGIN STRUCTURE IMPROVEMENT  
STA. 420+00.00

**LEGEND**

	PAVEMENT REMOVAL
	TREES TO BE REMOVED
	BIT. MATERIAL REMOVAL
	CONC. REMOVAL

**REMOVAL PLAN**  
SHEET 1 OF 7  
US 24 OVER LAMOINE RIVER  
F.A.P. RTE 317 (US RTE 24)  
SECTION 9RS-4, (10,11) RS-3; (10B-1) R  
BROWN & SCHUYLER COUNTY

MATCH LINE STA. 423+50