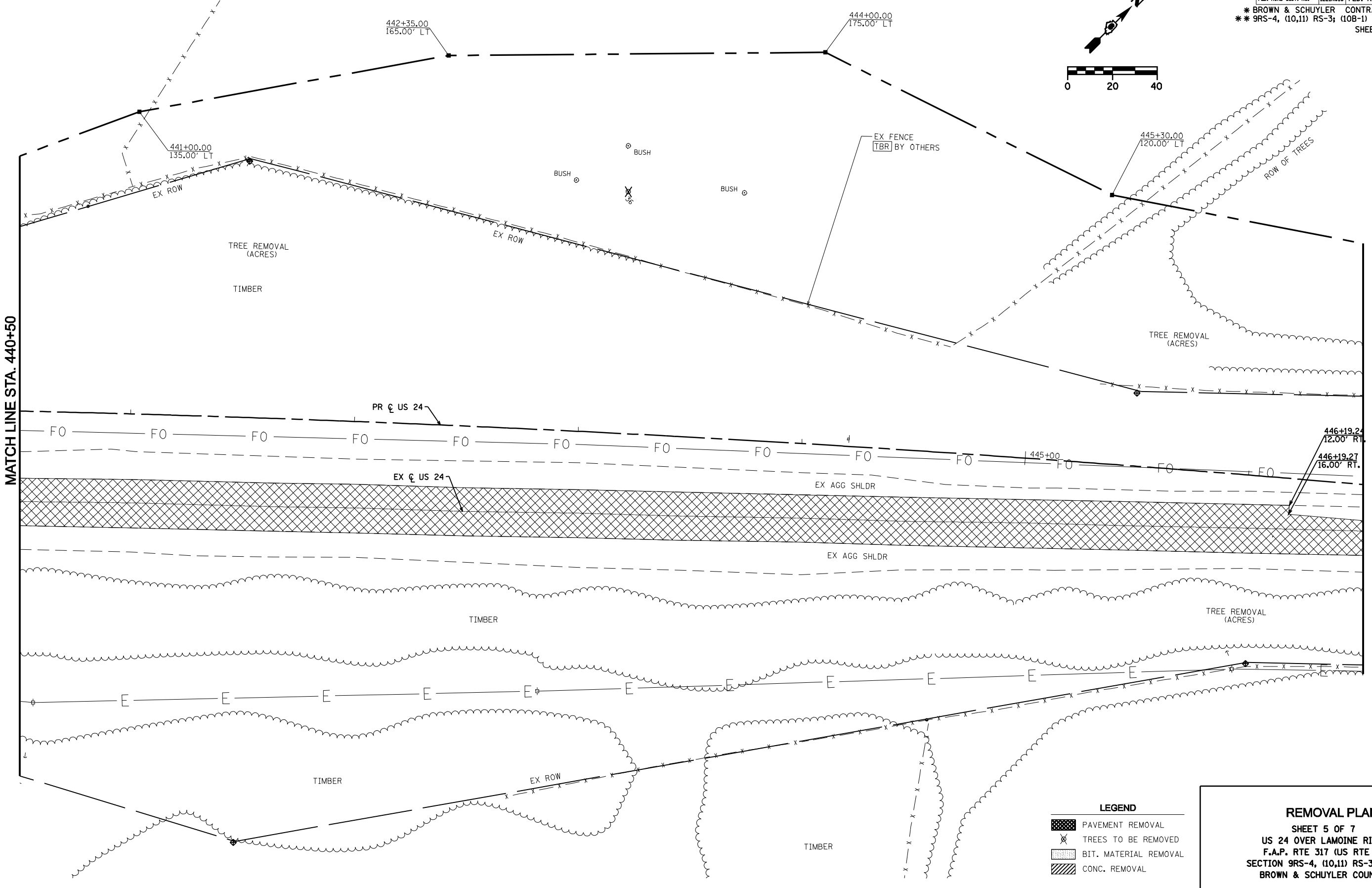
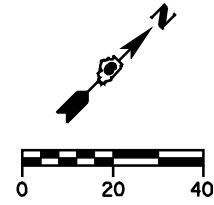


STATE OF ILLINOIS
DEPARTMENT OF TRANSPORTATION

F.A.P. RTE.	SECTION	COUNTY	TOTAL SHEETS	SHEET NO.
317	**	*	196	87
STA. 440+50 TO STA. 446+50				
FED. ROAD DIST. NO.	ILLINOIS	FED. AID PROJECT		
* BROWN & SCHUYLER CONTRACT NO. 72432				
* 9RS-4, (10,11) RS-3; (10B-1) R				
SHEET 15 OF 123				



LEGEND

	PAVEMENT REMOVAL
	TREES TO BE REMOVED
	BIT. MATERIAL REMOVAL
	CONC. REMOVAL

REMOVAL PLAN
SHEET 5 OF 7
US 24 OVER LAMOINE RIVER
F.A.P. RTE 317 (US RTE 24)
SECTION 9RS-4, (10,11) RS-3; (10B-1) R
BROWN & SCHUYLER COUNTY