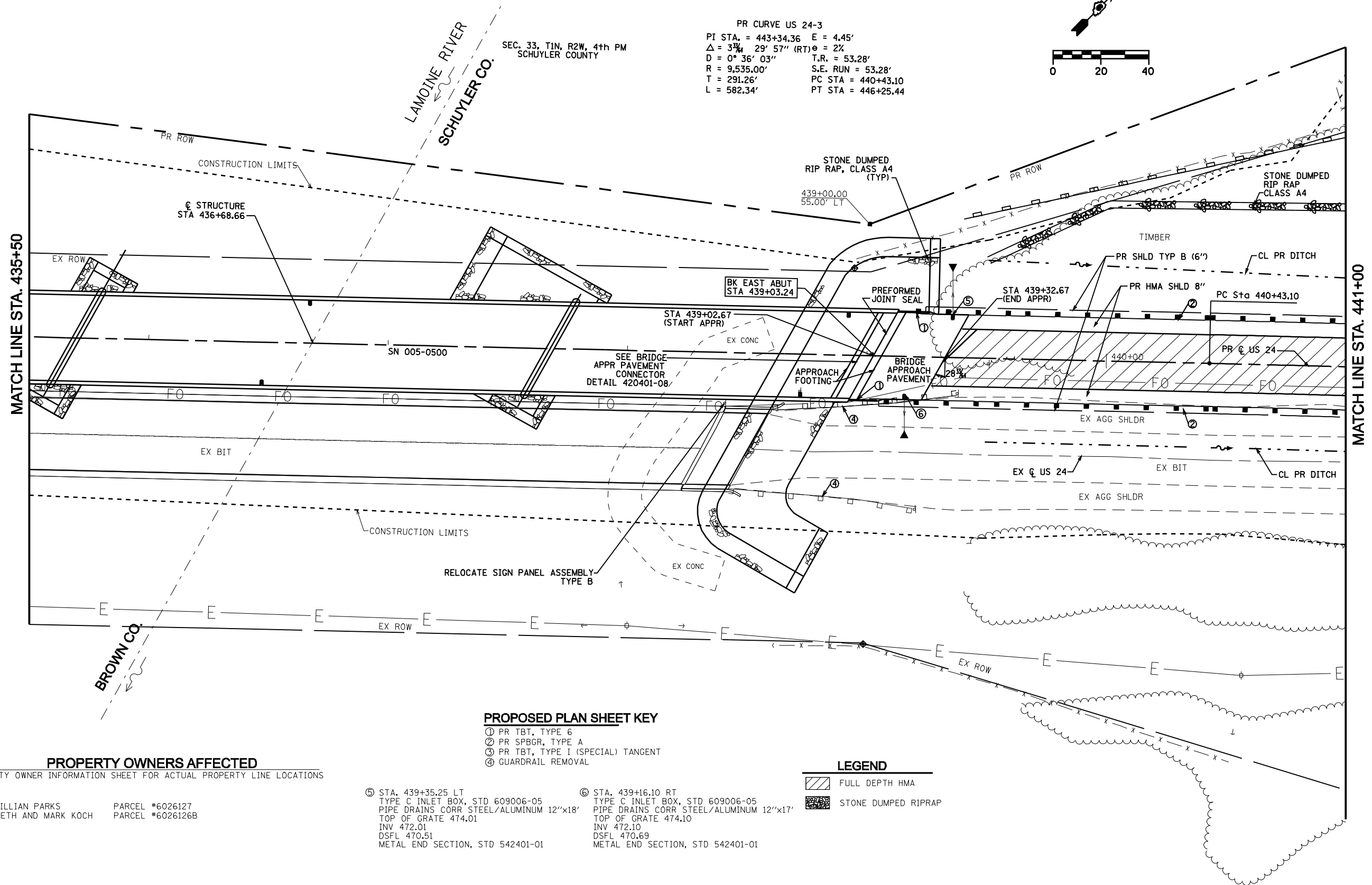
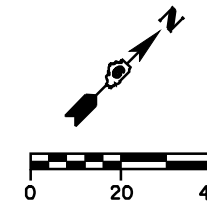


STATE OF ILLINOIS
DEPARTMENT OF TRANSPORTATION

F.A.P. RTE.	SECTION	COUNTY	TOTAL SHEETS	SHEET NO.
317	**	*	196	93
STA. 435+50 TO STA. 440+50				
FED. ROAD DIST. NO.	ILLINOIS	FED. AID PROJECT		
* BROWN & SCHUYLER CONTRACT NO. 72432				
** 9RS-4, (10,11) RS-3; (10B-1) R				
SHEET 21 OF 123				

PR CURVE US 24-3
 PI STA. = 443+34.36 E = 4.45'
 $\Delta = 37^\circ 29' 57''$ (RT) $\theta = 2\%$
 D = $0^\circ 36' 03''$ T.R. = 53.28'
 R = 9,535.00' S.E. RUN = 53.28'
 T = 291.26' PC STA = 440+43.10
 L = 582.34' PT STA = 446+25.44



PROPOSED PLAN SHEET KEY

- ① PR TBT, TYPE 6
- ② PR SPBGR, TYPE A
- ③ PR TBT, TYPE I (SPECIAL) TANGENT
- ④ GUARDRAIL REMOVAL

LEGEND

- FULL DEPTH HMA
- STONE DUMPED RIPRAP

PROPERTY OWNERS AFFECTED

SEE PROPERTY OWNER INFORMATION SHEET FOR ACTUAL PROPERTY LINE LOCATIONS

WILLIAM AND LILLIAN PARKS PARCEL #6026127
 PHILLIPS, KENNETH AND MARK KOCH PARCEL #6026126B

- ⑤ STA. 439+35.25 LT
 TYPE C INLET BOX, STD 609006-05
 PIPE DRAINS CORR STEEL/ALUMINUM 12"x18'
 TOP OF GRATE 474.01
 INV 472.01
 DSFL 470.51
 METAL END SECTION, STD 542401-01
- ⑥ STA. 439+16.10 RT
 TYPE C INLET BOX, STD 609006-05
 PIPE DRAINS CORR STEEL/ALUMINUM 12"x17'
 TOP OF GRATE 474.10
 INV 472.10
 DSFL 470.69
 METAL END SECTION, STD 542401-01