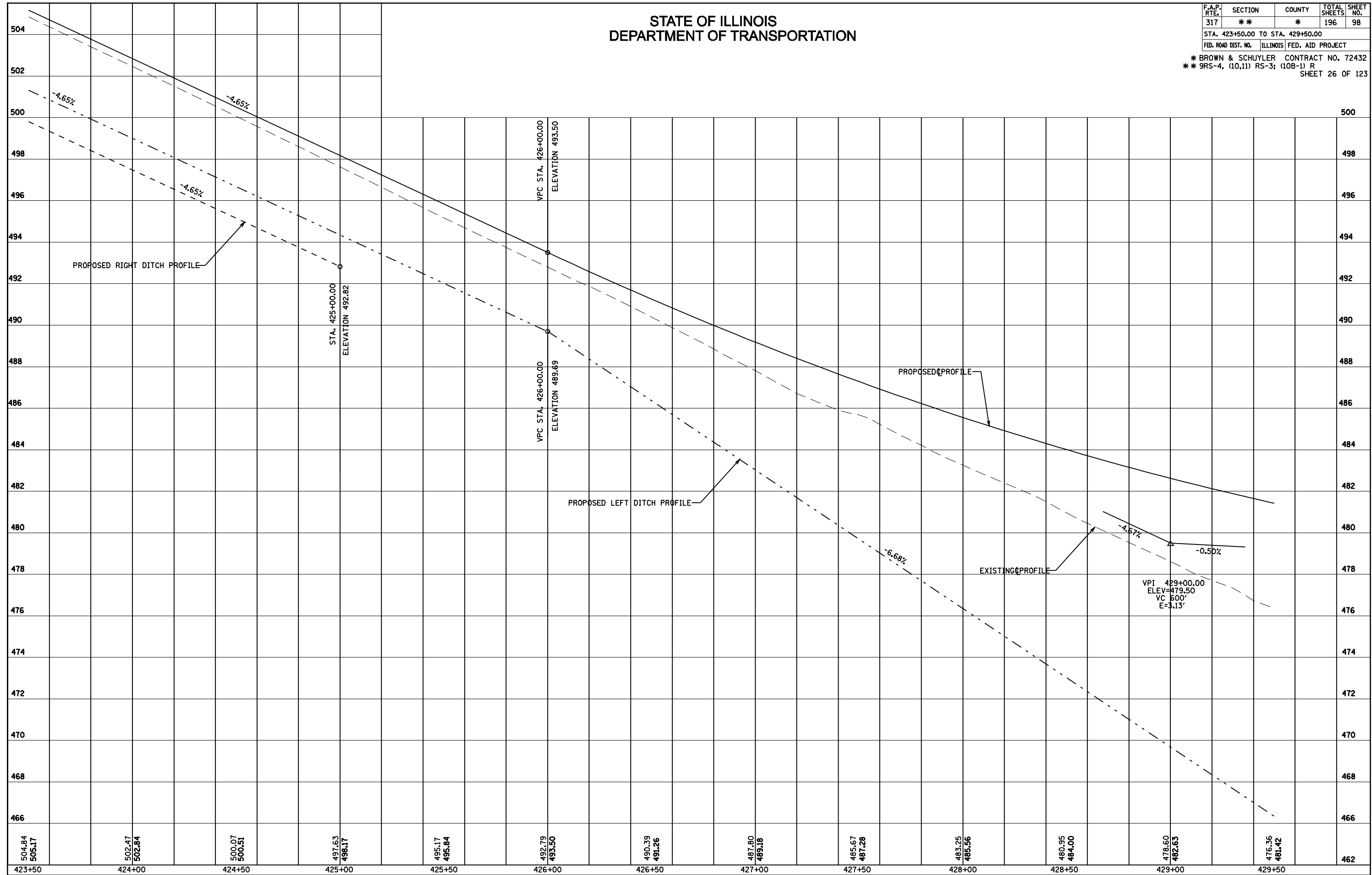


STATE OF ILLINOIS
DEPARTMENT OF TRANSPORTATION

F.A.P. RTE.	SECTION	COUNTY	TOTAL SHEETS	SHEET NO.
317	**	*	196	98
STA. 423+50.00 TO STA. 429+50.00				
FED. ROAD DIST. NO.	ILLINOIS	FED. AID PROJECT		
* BROWN & SCHUYLER CONTRACT NO. 72432				
** 9RS-4, (10,11) RS-3; (10B-1) R				
SHEET 26 OF 123				



PROFILE - STA. 423+50 TO STA. 429+50