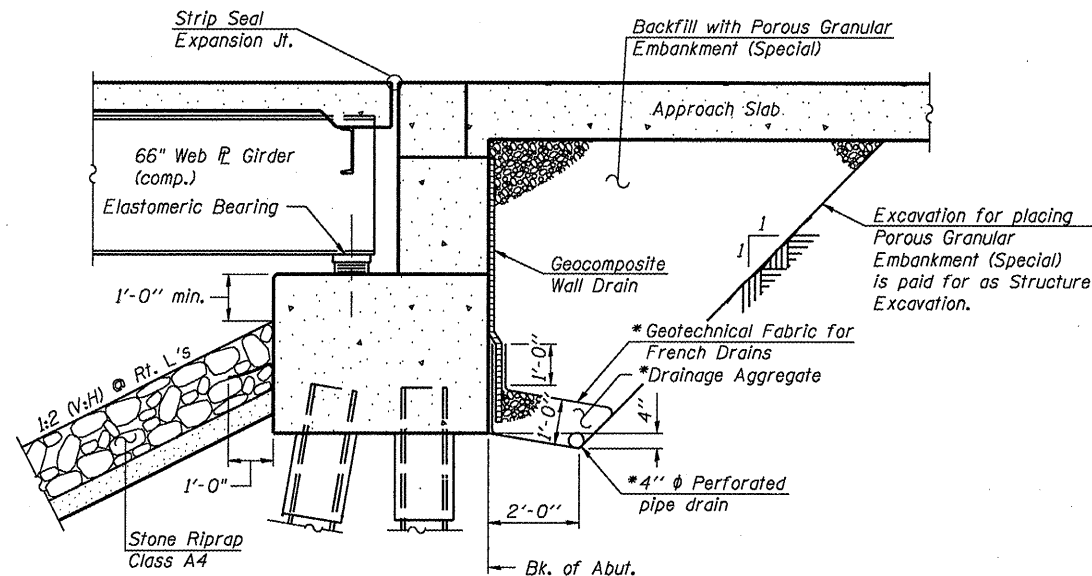


STATE OF ILLINOIS
DEPARTMENT OF TRANSPORTATION

GENERAL NOTES

- Fasteners shall be AASHTO M164 Type 1, mechanically galvanized bolts. Bolts $\frac{7}{8}$ in. ϕ , holes $\frac{15}{16}$ in. ϕ , unless otherwise noted.
- Calculated weight of Structural Steel = 687120 lbs (AASHTO M270, Grade 50)
42890 lbs (AASHTO M270, Grade 36)
- No field welding is permitted except as specified in the contract documents.
- Reinforcement bars shall conform to the requirements of ASTM A 706 Gr 60. See Special Provisions.
- Reinforcement bars designated (E) shall be epoxy coated.
- Bearing seat surfaces shall be constructed or adjusted to the designated elevations within a tolerance of $\frac{1}{8}$ inch (0.01 ft.). Adjustment shall be made either by grinding the surface or by shimming the bearings.
- Concrete Sealer shall be applied to the exposed surfaces of the backwalls, bridge seats, and front face of pile caps of the abutments.
- The existing structural steel coating contains lead. The Contractor shall take appropriate precautions to deal with the presence of lead on this project.
- The Inorganic Zinc Rich Primer / Acrylic / Acrylic Paint System shall be used for shop and field painting of new structural steel except where otherwise noted. The color of the final finish coat for all interior steel surfaces shall be gray, Munsell No. 5B 7/1. The color of the final finish coat for the exterior and bottom flange of the fascia beams shall be Reddish Brown, Munsell No. 2.5YR 3/4. See Special Provision for "Cleaning and Painting New Metal Structures".
- Layout of the slope protection system may be varied in the field to suit ground conditions as directed by the Engineer.
- The embankment configuration shown shall be the minimum that must be placed and compacted prior to construction of the abutments.
- The Contractor shall drive test piles to 110% of the nominal required bearing specified in production locations at substructures specified or approved by the Engineer before ordering the remainder of piles.
- Slipforming of the parapets is not allowed.



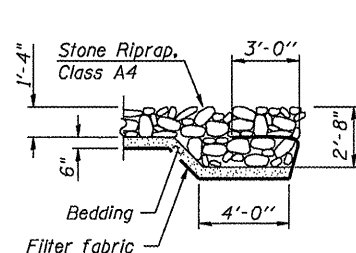
**SECTION THRU PILE SUPPORTED
STUB ABUTMENT**
(Horiz. dim. @ Rt. L's)

* Included in the cost of Pipe Underdrains for Structures.

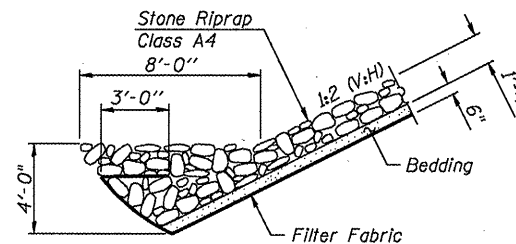
Note:
All drainage system components shall extend parallel to the abutment back wall until they intersect the wingwalls. The pipe shall extend under the wingwall, if necessary, until intersecting the side slopes. The pipes shall drain into concrete headwalls. (See Article 601.05 of the Standard Specifications and Highway Standard 60110).

TOTAL BILL OF MATERIAL

ITEM	UNIT	SUPER	SUB	TOTAL
Porous Granular Embankment, Special	Cu. Yd.	-	194	194
Stone Riprap, Class A4	Sq. Yd.	-	1972	1972
Filter Fabric	Sq. Yd.	-	1972	1972
Protective Coat	Sq. Yd.	2538	-	2538
Removal of Existing Structures	Each	1	-	1
Structure Excavation	Cu. Yd.	-	655	655
Concrete Structures	Cu. Yd.	-	301.8	301.8
Concrete Superstructure	Cu. Yd.	699.8	-	699.8
Bridge Deck Grooving	Sq. Yd.	1992	-	1992
Concrete Encasement	Cu. Yd.	-	12.6	12.6
Furnishing and Erecting Structural Steel	Lump Sum	1	-	1
Stud Shear Connectors	Each	3600	-	3600
Reinforcement Bars	Pound	-	20760	20760
Reinforcement Bars, Epoxy Coated	Pound	154840	45990	200830
Bar Splicers	Each	-	386	386
Furnishing Steel Piles HP12x53	Foot	-	1445	1445
Driving Piles	Foot	-	1445	1445
Test Pile Steel HP12x53	Each	-	2	2
Pile Shoes	Each	-	36	36
Name Plates	Each	1	-	1
Drilled Shaft in Soil	Cu. Yd.	-	73.5	73.5
Drilled Shaft in Rock	Cu. Yd.	-	34.7	34.7
Preformed Joint Strip Seal	Foot	86	-	86
Elastomeric Bearing Assembly, Type II	Each	-	12	12
Anchor Bolts, 1"	Each	-	24	24
Anchor Bolts, 1 1/4"	Each	-	24	24
Concrete Sealer	Sq. Ft.	-	784	784
Geocomposite Wall Drain	Sq. Yd.	-	83	83
Pipe Underdrains for Structures 4"	Foot	-	128	128
Drainage Scuppers, DS-II	Each	4	-	4
Temporary Soil Retention System	Sq. Ft.	-	1129	1129
Geotextile Retaining Wall	Sq. Ft.	-	300	300



SECTION A-A



STONE RIPRAP ANCHOR DETAIL

See Sheet 1 of 29 for location of Section A-A and Anchor Detail.

STATION 436+68.66
BUILT 20 BY
STATE OF ILLINOIS
F.A.P. RT. 317 SEC. (10B-1)R
LOADING HS20
STR. NO. 005-0500

NAME PLATE
See Std. 515001

**GENERAL NOTES AND DETAILS
STRUCTURE NO. 005-0500**

<p>LIN ENGINEERING, LTD. Consulting Engineers Chatham, Illinois</p>	SHEET NO. 2	F.A.P. RTE.	SECTION	COUNTY	TOTAL SHEETS	SHEET NO.
	29 SHEETS	317	(10B-1)R	BROWN/SCHUYLER	196	120
CONTRACT NO. 72432					ILLINOIS FED. AID PROJECT	