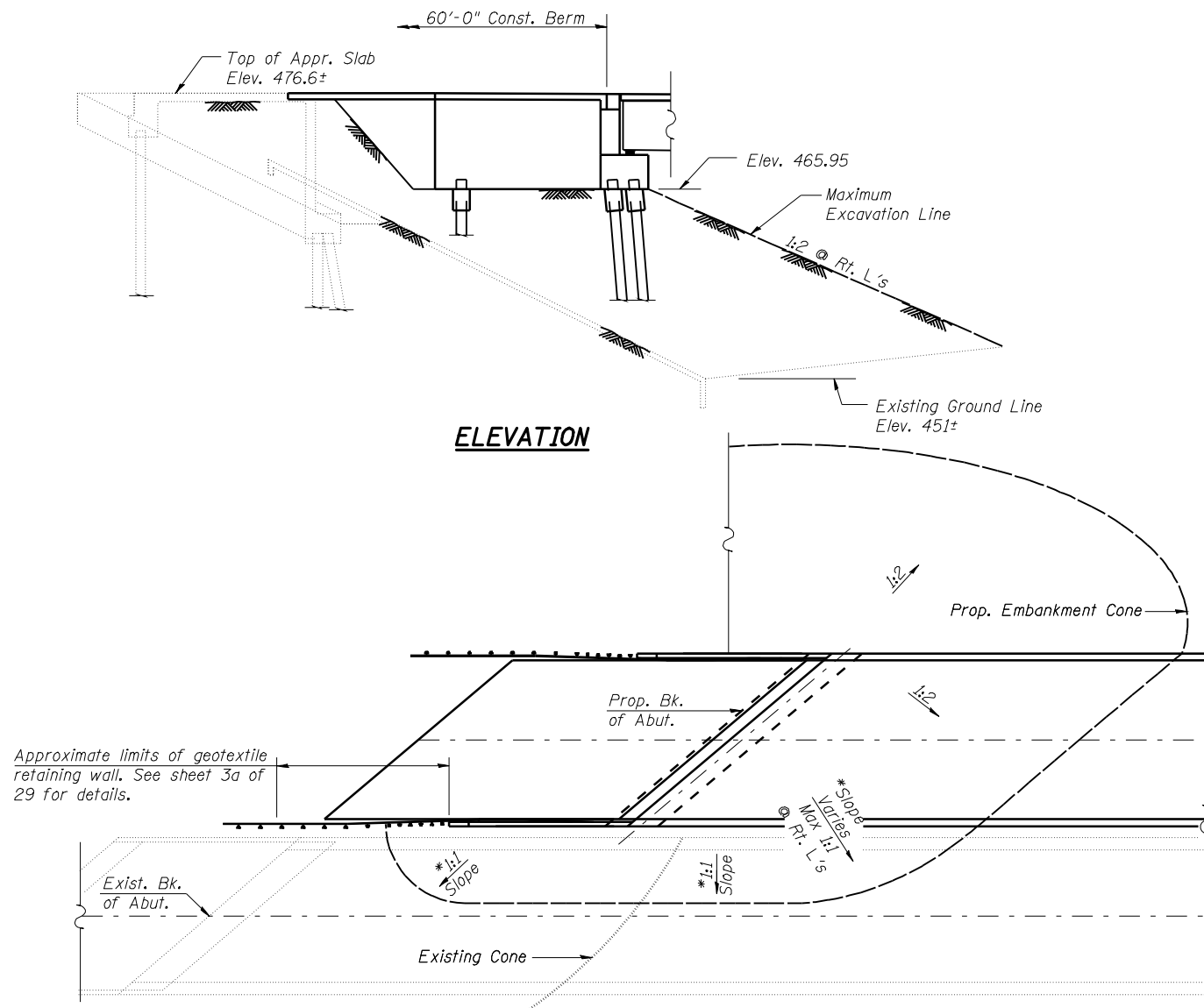
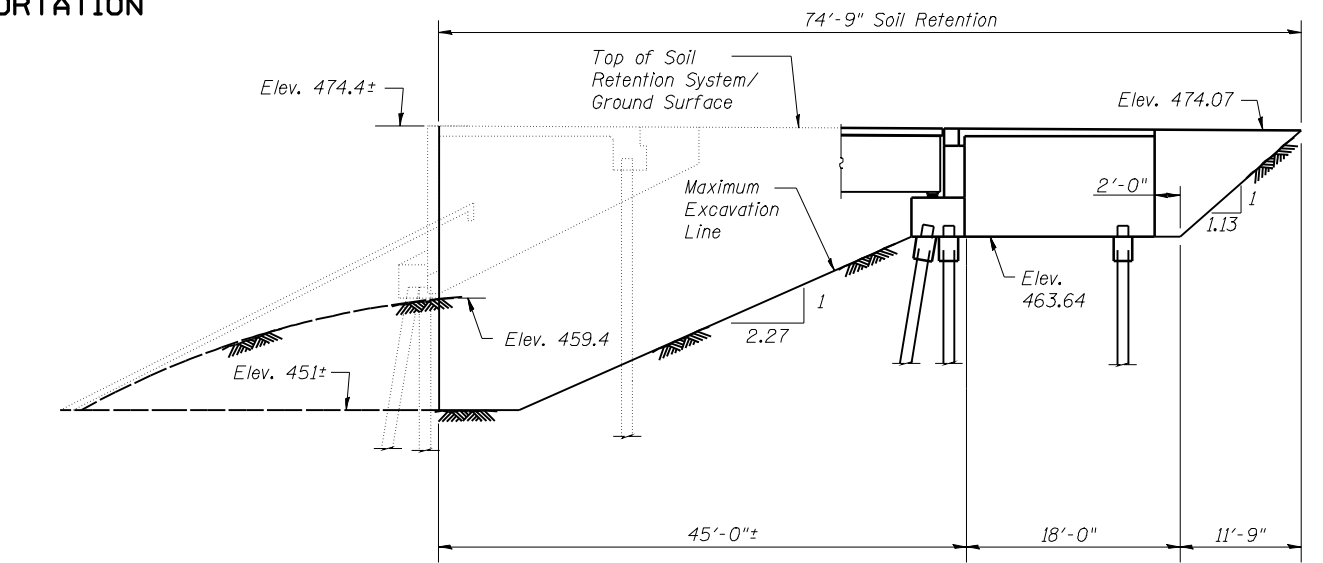


STATE OF ILLINOIS
DEPARTMENT OF TRANSPORTATION

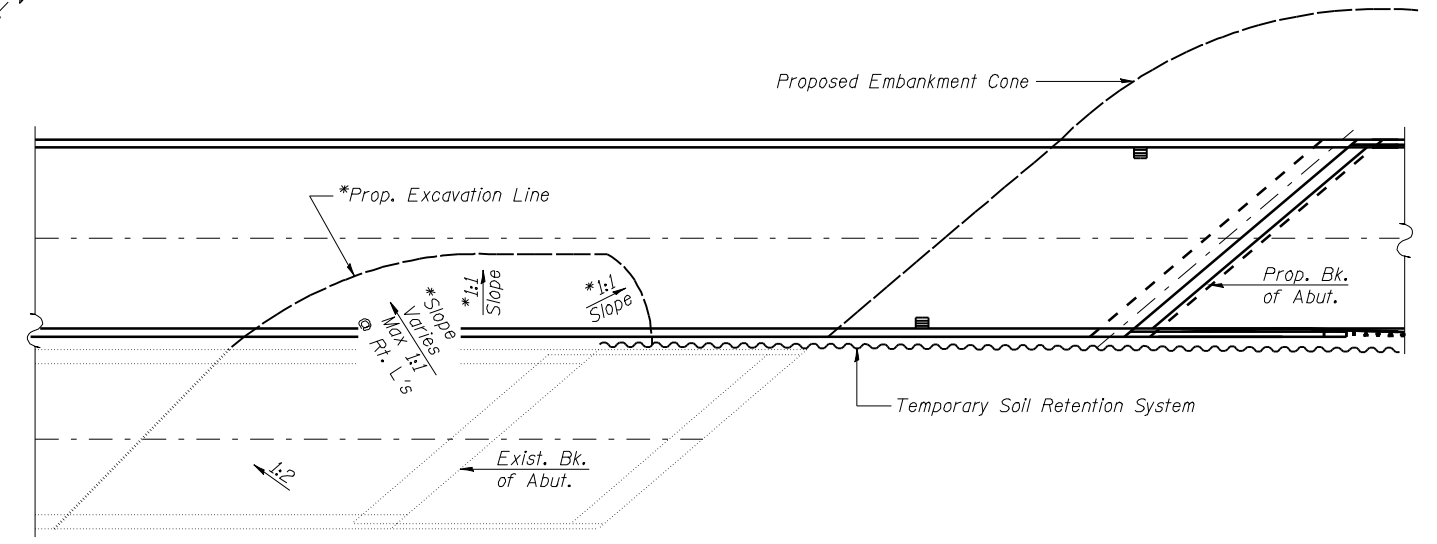


MINIMUM EMBANKMENT AT WEST ABUTMENT

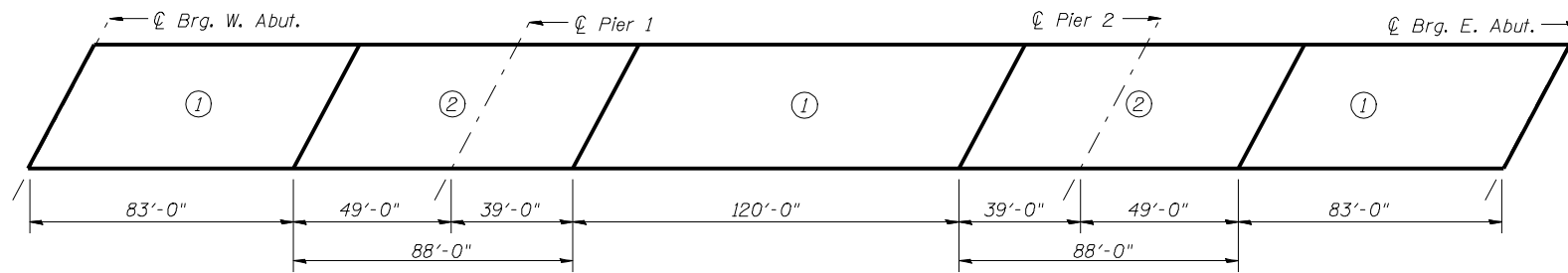
* Embankment required between proposed and existing structures prior to removal of existing structure.



Dimensions measured along ϕ proposed roadway.



TEMPORARY SOIL RETENTION SYSTEM FOR EXCAVATION AT EAST ABUTMENT



① - First Deck Pour
② - Second Deck Pour

Notes:

- When the deck pour is stopped for the day at one or more of the transverse bonded construction joints in the deck pouring sequence as shown, the next pour shall not be made until both of the following are met:
 - At least 72 hours shall have elapsed from the end of the previous pour.
 - The concrete strength shall have attained a minimum flexural strength of 650 psi or a minimum compressive strength of 3500 psi.
- A cantilevered sheet piling design does not appear feasible and additional members or other retention systems may be necessary. The Contractor shall submit a temporary soil retention system design including plan details and calculations for review and acceptance by the Engineer.

**CONSTRUCTION DETAILS-1
STRUCTURE NO. 005-0500**

LIN ENGINEERING, LTD. Consulting Engineers Chatham, Illinois <small>Designed By: ADB Checked By: MTH Drawn By: A.J.F. Date: 06/2009 File: 005-0500.DWG</small>	SHEET NO. 3	F.A.P. RTE.	SECTION	COUNTY	TOTAL SHEETS	SHEET NO.
	29 SHEETS	317	(10B-1)R	BROWN/SCHUYLER	196	121
CONTRACT NO. 72432					ILLINOIS FED. AID PROJECT	