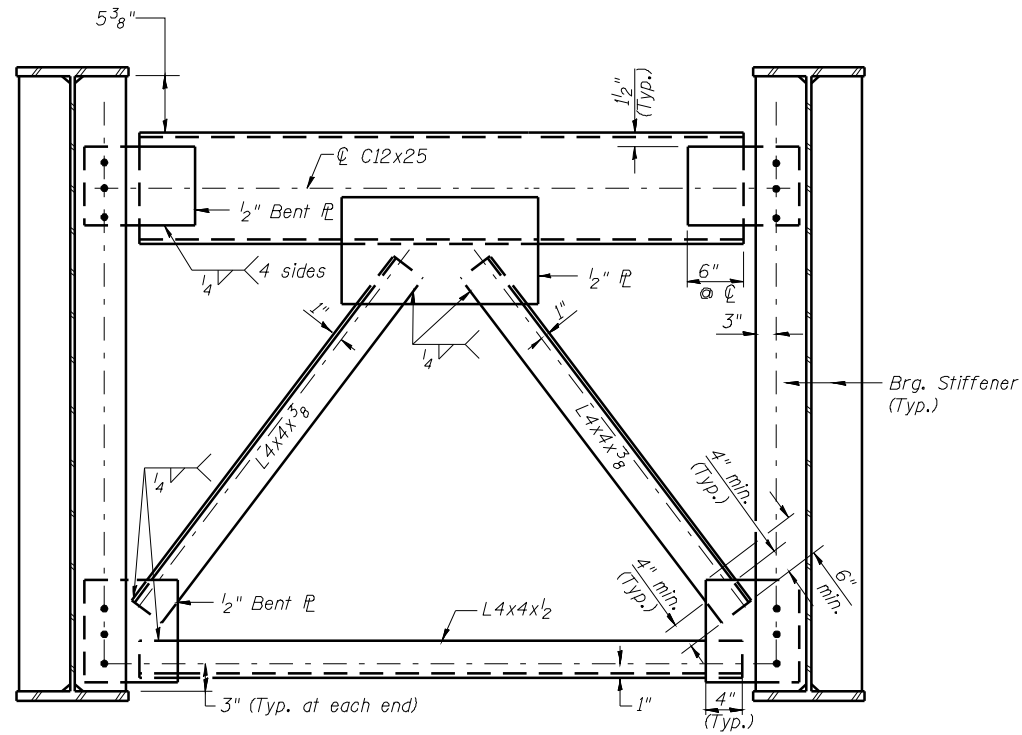
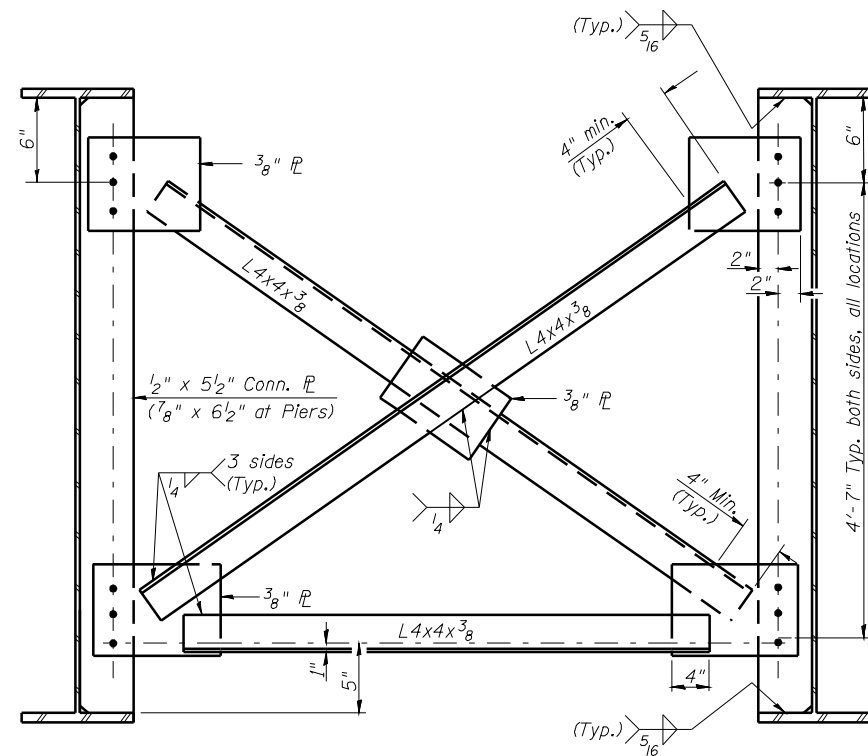


STATE OF ILLINOIS
DEPARTMENT OF TRANSPORTATION



END CROSS FRAME-XI
(10 required)

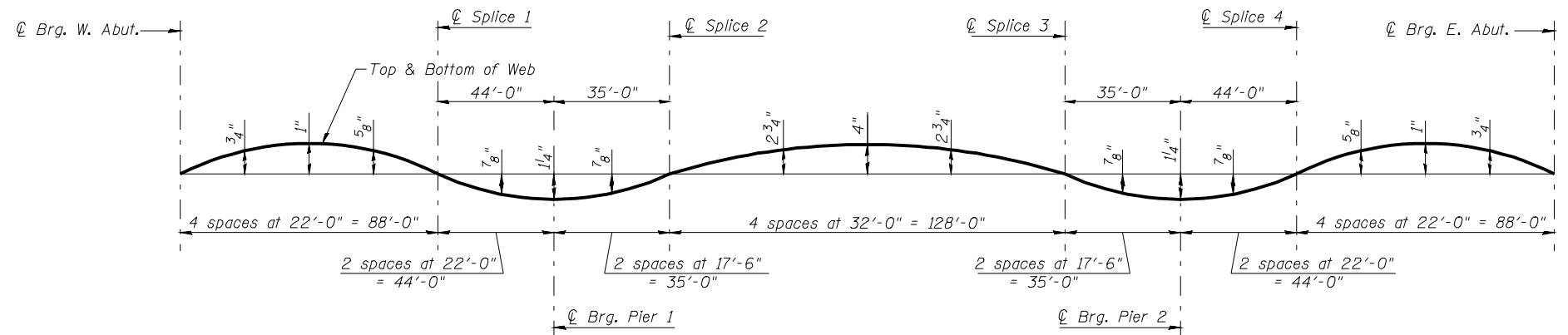


INTERIOR CROSS FRAME-X
(105 required)

*** TOP OF WEB ELEVATIONS**

Location	Girder 1	Girder 2	Girder 3	Girder 4	Girder 5	Girder 6
⊕ Brg. W. Abut.	475.68	475.82	475.94	475.96	475.88	475.77
⊕ Splice 1	475.15	475.29	475.41	475.43	475.35	475.24
⊕ Brg. Pier 1	474.93	475.07	475.19	475.21	475.13	475.02
⊕ Splice 2	474.94	475.08	475.20	475.22	475.13	475.02
⊕ Splice 3	474.30	474.44	474.56	474.58	474.49	474.38
⊕ Brg. Pier 2	473.94	474.08	474.20	474.22	474.14	474.03
⊕ Splice 4	473.72	473.86	473.98	474.00	473.92	473.81
⊕ Brg. E. Abut.	473.37	473.51	473.63	473.65	473.57	473.46

*For Fabrication Only



CAMBER DIAGRAM

Notes:

1. 15/16" φ holes for 3/4" φ bolts in cross frames.
2. Two hardened washers required for each set of oversized holes.
3. Place cross frame channel flanges and outstanding angle legs outward from abutment backwall.
4. All cross frames shall be installed as steel is erected and secured with erection pins and bolts except as otherwise noted. Individual cross frames at supports may be temporarily disconnected to install bearing anchor rods.
5. Work this sheet with sheet 15 of 29.

MISCELLANEOUS STEEL DETAILS
STRUCTURE NO. 005-0500

<p>LIN ENGINEERING, LTD. Consulting Engineers Chatham, Illinois</p>	SHEET NO. 16	F.A.P. RTE.	SECTION	COUNTY	TOTAL SHEETS	SHEET NO.
	29 SHEETS	317	(10B-1)R	BROWN/SCHUYLER	196	135
ILLINOIS FED. AID PROJECT					CONTRACT NO. 72432	