

F.A.P. RTE.	SECTION	COUNTY	TOTAL SHEETS	SHEET NO.
322	11-12	CHRISTIAN	284	11
STA.		TO STA.		
FED. ROAD DIST. NO.		ILLINOIS FED. AID PROJECT		

80% FEDERAL 20% STATE
CONSTRUCTION AND SAFETY TYPE CODE

CODE NO.	ITEM	SP. PROV.	UNIT	80% FED. 20% STATE TOTAL QUANTITIES	1000-2A ROADWAY	Y030-1E LIGHTING				
80400100	ELECTRIC SERVICE INSTALLATION		EACH	5		5				
81021330	CONDUIT PUSHED, 2" DIA., PVC		FOOT	1270		1270				
81603000	UNIT DUCT, 600V, 2-1C NO.8, 1/C NO.8 GROUND, (XLP-TYPE USE), 3/4" DIA. POLYETHYLENE		FOOT	2010		2010				
81603010	UNIT DUCT, 600V, 2-1C NO.10, 1/C NO.10 GROUND, (XLP-TYPE USE), 3/4" DIA. POLYETHYLENE		FOOT	5794		5794				
81603065	UNIT DUCT, 600V, 2-1C NO.2, 1/C NO.2 GROUND, (XLP-TYPE USE), 1 1/4" DIA. POLYETHYLENE		FOOT	1184		1184				
81800200	AERIAL CABLE, 2-1/C NO. 4 WITH MESSENGER WIRE		FOOT	1655		1655				
81900200	TRENCH AND BACKFILL FOR ELECTRICAL WORK		FOOT	6983		6983				
82102250	LUMINAIRE, SODIUM VAPOR, HORIZONTAL MOUNT, 250 WATT		EACH	49		49				
82103900	LUMINAIRE, SODIUM VAPOR, MULTI-MOUNT, 250 WATT		EACH	9		9				
82500300	LIGHTING CONTROLLER, POLE MOUNTED, 240VOLT, 30AMP		EACH	4		4				
82500310	LIGHTING CONTROLLER, POLE MOUNTED, 240VOLT, 60AMP		EACH	1		1				
83003600	LIGHT POLE, ALUMINUM, 45 FT. M.H., 15 FT. DAVIT ARM		EACH	49		49				
83057280	LIGHT POLE, WOOD, 50 FOOT, CLASS 3		EACH	9		9				
83600355	LIGHT POLE FOUNDATION METAL, 15" BOLT CIRCLE, 8" X 6'		EACH	49		49				
83800650	BREAKAWAY DEVICE, COUPLING, WITH STAINLESS STEEL SCREEN		EACH	196		196				
84200600	REMOVAL OF LIGHTING UNIT, NO SALVAGE		EACH	8		8				
Z0005010	HOT-MIX ASPHALT FOR PATCHING POTHOLES (COLD MIX)		TON	75	75					
Z0007601	BUILDING REMOVAL NO. 1		L SUM	1	1					
Z0007602	BUILDING REMOVAL NO. 2		L SUM	1	1					
Z0007603	BUILDING REMOVAL NO. 3		L SUM	1	1					
Z0007604	BUILDING REMOVAL NO. 4		L SUM	1	1					
Z0007605	BUILDING REMOVAL NO. 5		L SUM	1	1					
Z0007606	BUILDING REMOVAL NO. 6		L SUM	1	1					
Z0013798	CONSTRUCTION LAYOUT		L SUM	1	1					
Z0038506	REMOVE PERMANENT BARRICADES		L SUM	1	1					
Z0054530	ROCK FILL - SUBGRADE		TON	2000	2000					

* SPECIALTY ITEM

REV.

REVISIONS	
NAME	DATE

ILLINOIS DEPARTMENT OF TRANSPORTATION
SUMMARY OF QUANTITIES
SHEET 8 OF 9
FAP 322 (US 51)
SECTION 11-12
CHRISTIAN COUNTY

SCALE: NONE DRAWN BY: SEB
DATE: 8/22/06 CHECKED BY: TLD

5-25-10

TEMPORARY ACCESS SCHEDULE

ROUTE	STATION	OFFSET	X4021000	X4022000	X4023000	X4024000
			PRIVATE ENTRANCE	COMMERCIAL ENTRANCE	ROAD	FIELD ENTRANCE
			EACH	EACH	EACH	EACH
FAP 322	561+45	RT				1
	567+91	LT				1
	589+10	RT				1
	595+05	LT	1			
	595+05	RT	1			
	602+60	RT				1
	614+65	RT				1
	626+00	RT				1
	637+00	LT				1
	637+00	RT				1
	647+00	RT				1
	714+45	LT				1
	714+45	RT				1
	723+00	LT				1
	723+00	RT				1
	758+80	RT				1
	772+04	RT				1
	TR229A	16+00	LT			
24+00		LT				1
24+00		RT				1
PRIVATE DR 574					1	
EX US 51	473+74 TO 485+00				1	
	493+70	RT				1
ILLINOIS ST	46+14	RT		1		
	46+21	LT		1		
	48+66	LT		1		
TR 209	54+50	LT				1
	54+53	RT		1		
CH 6	46+35	RT				1
	53+58	RT	1			
	54+00	LT				1
TR 193	15+00	LT				1
TOTALS:			3	4	2	23

SEEDING SCHEDULE

LOCATION		25000210	25000400	25000500	25000600	25000700	25100115	
		SEEDING, CLASS 2A ACRE	NITROGEN FERTILIZER NUTRIENT POUND	PHOSPHORUS FERTILIZER NUTRIENT POUND	POTASSIUM FERTILIZER NUTRIENT POUND	AGRICULTURAL GROUND LIMESTONE TON	MULCH, METHOD 2 ACRE	
FAP 322	551+00 TO 558+00	1.84	165.6	165.6	165.6	3.7	1.84	
	558+00 TO 573+00	4.52	406.8	406.8	406.8	9.0	4.52	
	573+00 TO 588+00	4.54	408.6	408.6	408.6	9.1	4.54	
	588+00 TO 603+00	5.82	523.8	523.8	523.8	11.6	5.82	
	603+00 TO 618+00	4.95	445.5	445.5	445.5	9.9	4.95	
	618+00 TO 633+00	4.92	442.8	442.8	442.8	9.8	4.92	
	633+00 TO 648+00	5.15	463.5	463.5	463.5	10.3	5.15	
	648+00 TO 663+00	6.42	577.8	577.8	577.8	12.8	6.42	
	663+00 TO 678+00	5.36	482.4	482.4	482.4	10.7	5.36	
	678+00 TO 693+00	4.59	413.1	413.1	413.1	9.2	4.59	
	693+00 TO 695+00	0.67	60.3	60.3	60.3	1.3	0.67	
	762+00 TO 768+00	2.74	246.6	246.6	246.6	5.5	2.74	
	768+00 TO 783+00	2.12	190.8	190.8	190.8	4.2	2.12	
	783+00 TO 793+12	0.39	35.1	35.1	35.1	0.8	0.39	
	TR 229A	15+00 TO 18+95	0.62	55.8	55.8	55.8	1.2	0.62
		21+20 TO 24+75	0.53	47.7	47.7	47.7	1.1	0.53
PRIVATE DRIVE 574	45+90 TO 49+60	0.35	31.5	31.5	31.5	0.7	0.35	
PRIVATE DRIVE 595	16+80 TO 18+70	0.25	22.5	22.5	22.5	0.5	0.25	
ASSUMPTION SOUTH CONNECTOR	3+70 TO 495+00	1.98	178.2	178.2	178.2	4.0	1.98	
SERVICE DRIVE 614	485+00 TO 4+00	1.44	129.6	129.6	129.6	2.9	1.44	
ILLINOIS STREET	45+50 TO 48+90	0.11	9.9	9.9	9.9	0.2	0.11	
TR 209	52+10 TO 55+00	0.49	44.1	44.1	44.1	1.0	0.49	
CH 6	46+50 TO 48+80	0.49	44.1	44.1	44.1	1.0	0.49	
	51+20 TO 54+60	0.69	62.1	62.1	62.1	1.4	0.69	
TR 193	12+54 TO 16+25	1.27	114.3	114.3	114.3	2.5	1.27	
EX US 51	610+00 TO 622+00	1.21	108.9	108.9	108.9	2.4	1.21	
TOTALS:		63.5	5,711	5,711	5,711	126.8	63.5*	

* - SEE EROSION CONTROL SCHEDULE FOR ADDITIONAL QUANTITY

FIELD TILE SCHEDULE

PAY ITEM		UNIT	TOTAL
61100500	EXPLORATION TRENCH 52" DEPTH	FOOT	29,200
61100605	MISCELLANEOUS CONCRETE	CU YD	25
61101009	STORM SEWERS PROTECTED, CLASS A, 8"	FOOT	500
61101011	STORM SEWERS PROTECTED, CLASS A, 10"	FOOT	500
61101013	STORM SEWERS PROTECTED, CLASS A, 12"	FOOT	500
61101020	STORM SEWERS PROTECTED, CLASS A, 18"	FOOT	500
61101026	STORM SEWERS PROTECTED, CLASS A, 24"	FOOT	500
61133200	FIELD TILE JUNCTION VAULTS, 3' DIA.	EACH	10
61140000	STORM SEWERS, SPECIAL 8"	FOOT	500
61140100	STORM SEWERS, SPECIAL 10"	FOOT	500
61140200	STORM SEWERS, SPECIAL 12"	FOOT	500
61140600	STORM SEWERS, SPECIAL 18"	FOOT	500
61140900	STORM SEWERS, SPECIAL 24"	FOOT	500
20800150	TRENCH BACKFILL	CU YD	200

THE SCHEDULE FOR HANDLING FIELD TILE (SEE DETAIL AND SECTION 611) IS AN ESTIMATED QUANTITY. IT MAY BE REDUCED, INCREASED, OR DELETED BY THE ENGINEER BASED ON ACTUAL FIELD CONDITIONS. NO WORK INVOLVING THIS ESTIMATED QUANTITY SHALL BE PERFORMED WITHOUT THE DIRECTION AND APPROVAL OF THE ENGINEER.

GEOTECHNICAL SCHEDULE

PAY ITEM		UNIT	TOTAL
21001000	GEOTECHNICAL FABRIC FOR GROUND STABILIZATION	SQ YD	2,000
31100100	SUB-BASE GRANULAR MATERIAL, TYPE A	TONS	750
X2020500	EARTH EXCAVATION (ROCKFILL)	CU YD	1,500
Z0054530	ROCKFILL - SUBGRADE	TONS	2,000
30201500	LIME	TONS	75
30200650	PROCESSING MODIFIED SOILS, 12"	SQ YDS	4,000
20200100	EARTH EXCAVATION	CU YDS	2,800

THE SCHEDULE FOR GEOTECHNICAL ITEMS IS AN ESTIMATED QUANTITY FOR IMPROVING UNSTABLE SUBGRADE CONDITIONS AT VARIOUS LOCATIONS. THE QUANTITIES MAY BE REDUCED, INCREASED, OR DELETED BY THE ENGINEER BASED ON ACTUAL FIELD CONDITIONS. NO WORK INVOLVING THESE ESTIMATED QUANTITIES SHALL BE PERFORMED WITHOUT THE DIRECTION AND APPROVAL OF THE ENGINEER.

INTERSEEDING SCHEDULE

PAY ITEM		UNIT	TOTAL
25000750	MOWING	ACRE	40
25003210	INTERSEEDING, CLASS 2A	ACRE	20

THE SCHEDULE FOR INTERSEEDING & MOWING IS AN ESTIMATED QUANTITY FOR HANDLING PERMANENT SEEDING AFTER TEMPORARY "TEMPORARY EROSION CONTROL SEEDING" HAS BEEN PLACED AND ESTABLISHED ON FINISHED HIGHLY ERODABLE SOIL (TO AVOID FURTHER GROUND DISTURBANCE). ADDITIONAL MOWING QUANTITY HAS BEEN PROVIDED FOR PREGRADED AND COMPLETED SECTIONS OF FAP 322 THAT MAY REQUIRE MOWING PRIOR TO OPENING TO TRAFFIC. BOTH MAY BE REDUCED, INCREASED, OR DELETED BY THE ENGINEER BASED ON ACTUAL FIELD CONDITIONS. NO WORK INVOLVING THIS ESTIMATED QUANTITY SHALL BE PERFORMED WITHOUT THE DIRECTION AND APPROVAL OF THE ENGINEER.

REMOVAL AND DISPOSAL OF UNSUITABLE MATERIAL

LOCATION	20201200	REMARKS
	ESTIMATED QUANTITY CU YD	
VARIOUS	150	MISCELLANEOUS REMOVAL AT EXISTING DITCHES AS DETERMINED BY THE ENGINEER.
TOTAL	150	

THE SCHEDULE FOR REMOVAL AND DISPOSAL OF UNSUITABLE MATERIAL IS AN ESTIMATED QUANTITY. IT MAY BE REDUCED, INCREASED, OR DELETED BY THE ENGINEER BASED ON ACTUAL FIELD CONDITIONS. NO WORK INVOLVING THIS ESTIMATED QUANTITY SHALL BE PERFORMED WITHOUT THE DIRECTION AND APPROVAL OF THE ENGINEER.

ADDED SHEET

5-25-10

F.A.P. RTE.	SECTION	COUNTY	TOTAL SHEETS	SHEET NO.
322	11-12	CHRISTIAN	284	13
STA.		TO STA.		
FED. ROAD DIST. NO.		ILLINOIS	FED. AID PROJECT	

EROSION CONTROL SCHEDULE

PAY ITEM		UNIT	TOTAL
28000200	EARTH EXCAVATION FOR EROSION CONTROL	CU YD	1,100
28000250	TEMPORARY EROSION CONTROL SEEDING	POUND	6,500
28000400	PERIMETER EROSION BARRIER	FOOT	250
28000500	INLET AND PIPE PROTECTION	EACH	53
28000600	SEEDING, CLASS 7	ACRE	50
25100115	MULCH, METHOD 2	ACRE	50
28000305	TEMPORARY DITCH CHECKS	FOOT	340
28000315	AGGREGATE DITCH CHECKS	TON	276

THE SCHEDULE FOR EROSION CONTROL IS AN ESTIMATED QUANTITY IT MAY BE REDUCED, INCREASED, OR DELETED BY THE ENGINEER BASED ON ACTUAL FIELD CONDITIONS. NO WORK INVOLVING THIS ESTIMATED QUANTITY SHALL BE PERFORMED WITHOUT THE DIRECTION AND APPROVAL OF THE ENGINEER.

EROSION CONTROL BLANKET

LOCATION / ITEM	NUMBER	25100630	
		AREA	SQ YD
CAST IN PLACE END SECTIONS	FAP 322 606+09 (13.2 SQ YD / EACH)	2	26.4
	TR 229A 18+65 (9.6 SQ YD / EACH)	2	19.2
	EX US 51 606+45 (12.1 SQ YD / EACH)	2	24.2
PRECAST END SECTIONS	24" (8.3 SQ YD / EACH)	14	116.2
	36" (10.5 SQ YD / EACH)	6	63.0
	27" ERS (10.0 SQ YD / EACH)	4	40.0
	30" ERS (10.2 SQ YD / EACH)	6	61.2
	6' X 3' BOX (11.6 SQ YD / EACH)	2	23.2
	8' X 2' BOX (12.4 SQ YD / EACH)	2	24.8
MEDIAN INLET STD 604101 (18.4 SQ YD / EACH)	7	128.8	
INLET BOX STD 542501 (17.6 SQ YD / EACH)	3	52.8	
INLET BOX STD 542506 (20.4 SQ YD / EACH)	3	61.2	
CONC HEADWALL FOR PIPE UNDERDRAIN (11.4 SQ YD/EACH)	171	1949.4	
TOTALS:			2,590

HEAVY DUTY EROSION CONTROL BLANKET

LOCATION	25100635	
	AREA	SQ YD
FAP 322 561+82 LT TO 565+50 RT		409
FAP 322 762+10 LT TO 767+33 LT		581
TOTALS:		990

HOT-MIX ASPHALT FOR PATCHING POTHOLES

PAY ITEM		UNIT	TOTAL
Z0005010	HOT-MIX ASPHALT FOR PATCHING POTHOLES (COLD MIX)	TON	75

THIS ITEM INCLUDES AN ESTIMATED QUANTITY TO REPAIR POTHOLES DUE TO HAUL ROAD ACTIVITIES ON EXISTING BITUMINOUS / OIL & CHIP ROADS. THE ITEM MAY BE REDUCED, INCREASED, OR DELETED BY THE ENGINEER BASED ON ACTUAL FIELD CONDITIONS. NO WORK INVOLVING THIS ESTIMATED QUANTITY SHALL BE PERFORMED WITHOUT THE DIRECTION AND APPROVAL OF THE ENGINEER.

REVISIONS	
NAME	DATE

ILLINOIS DEPARTMENT OF TRANSPORTATION
 SCHEDULE OF QUANTITIES
 SEEDING, E.C., & ESTIMATED
 FAP 322 (US 51)
 SECTION 11-12
 CHRISTIAN COUNTY

SCALE: NONE DRAWN BY SEB
 DATE 8/22/06 CHECKED BY TLD

F.A.P. RTE.	SECTION	COUNTY	TOTAL SHEETS	SHEET NO.
322	11-12	CHRISTIAN	284	26
STA.		TO STA.		
FED. ROAD DIST. NO.		ILLINOIS FED. AID PROJECT		

FINAL STRIPING / DELINEATOR SCHEDULE CONTINUED

LOCATION	STATIONING	LANE	SIDE	78001120		78001150	X7800620 & X7030070		X7800600	X7800630	X7800650	X7800680	78004200	78004220	78004230	78004250	78004280	78100100	63500105							
				PAINT PAVEMENT MARKING			GROOVED URETHANE PAVEMENT MARKING		URETHANE PAVEMENT MARKING				PERFORMED PLASTIC PAVEMENT MARKING, TYPE B - INLAID							RAISED REFLECTIVE PAVEMENT MARKER	DELINEATORS					
				LINE 5"	LINE 12"	LINE 5"	LINE 5"	LINE 12"	LINE 24"	LETTERS & SYMBOLS	LINE 6"	LINE 12"	LINE 24"	LETTERS & SYMBOLS	LINE 5"	LINE 6"	LINE 12"	LINE 24"	LETTERS & SYMBOLS		LINE 5"	LINE 6"	LINE 12"	LINE 24"	WAY CRYSTAL	SINGLE WHITE
FOOT	FOOT	FOOT	FOOT	FOOT	FOOT	FOOT	SQ FT	FOOT	FOOT	FOOT	SQ FT	FOOT	FOOT	FOOT	FOOT	FOOT	FOOT	FOOT	FOOT	FOOT	FOOT	EACH	EACH	EACH		
FAP 322	783+00 to 798+00	NB	OUTSIDE			60.0																				
			CE																							
			MEDIAN			395.0																				
			CE																							
TR 229A	798+00 to 813+00	SB																								
	17+78.6 to 20+00	LT		199.1																						
		RT			282.4																					
	20+00 to 22+16.3	LT		240.9																						
		RT		235.8																						
		CE			272.6																					
		RT		194.1																						
ASSUMPTION SOUTH CONNECTOR	2+50 to 6+00	LT		371.1																						
		RT			538.0																					
		CE																								
		RT		326.0																						
	6+00 to 495+00	LT		818.9																						
		RT			1774.6																					
		CE																								
		RT		875.1																						
ILLINOIS ST	44+70 to 50+82	CE				821.7 **	31.2	101.0	202.9	42.5																
TR 209	50+82 to 55+00	LT		473.0																						
		RT			716.3	151.2																				
		CE																								
		RT		392.0																						
CH 6	47+58.2 to 50+00	LT		210.0																						
		RT			327.0																					
		CE																								
		RT		261.8																						
	50+00 to 52+41.8	LT		261.8																						
		RT			327.0																					
		CE																								
		RT		210.0																						
TR 193	12+53.8 to 15+13.6	LT		259.8																						
		RT			519.6																					
		CE																								
		RT		195.2																						
	17+57.8 to 20+00	LT		210.7																						
		RT			320.2																					
		CE																								
		RT		262.5																						
	20+00 to 22+42.2	LT		262.5																						
		RT			320.2																					
		CE																								
		RT		210.7																						
TR 306	8+55 to 10+00	LT		110.2																						
		RT			132.0																					
		CE																								
		RT		110.2																						
SUB-TOTALS:				6,964	5,774	151	45,063	48,704	32	101	203	43	1,186	11,365	6,663	380	916	202	731	93	54	72				
TOTALS:				12,738 *		151	93,767		32	101	203	43	1,186	11,365	7,043		916	202	731	219						

* - SEE STAGE CONSTRUCTION PAVEMENT MARKING SCHEDULE FOR ADDITIONAL QUANTITIES
 ** - URETHANE PAVEMENT MARKING ONLY (NO GROOVING)

LIGHTING SCHEDULE

PAY ITEM	DESCRIPTION	UNIT	CROSSOVER "A" / TR 229A INTERSECTION	ASSUMPTION SOUTH CON. INTERSECTION	ILLINOIS ST/ TR 209 INTERSECTION	CH 6 INTERSECTION	TR 193 INTERSECTION	PROJECT TOTAL
80400100	ELECTRIC SERVICE INSTALLATION	EACH	1	1	1	1	1	5
83057280	LIGHT POLE, WOOD, 50 FOOT, CLASS 3	EACH	9					9
81021330	CONDUIT PUSHED, 2" DIA., PVC	FOOT	265	200	265	270	270	1270
81900200	TRENCH AND BACKFILL FOR ELECTRICAL WORK	FOOT	1504	1150	1345	1340	1644	6983
81603000	UNIT DUCT, 600V, 2-1C NO.8, 1/C NO.8 GROUND, (XLP-TYPE USE), 3/4" DIA. POLYETHYLENE	FOOT	985				1025	2010
81603010	UNIT DUCT, 600V, 2-1C NO.10, 1/C NO.10 GROUND, (XLP-TYPE USE), 3/4" DIA. POLYETHYLENE	FOOT		1445	1715	1715	919	5794
81603065	UNIT DUCT, 600V, 2-1C NO.2, 1/C NO.2 GROUND, (XLP-TYPE USE), 1 1/4" DIA. POLYETHYLENE	FOOT	1184					1184
81800200	AERIAL CABLE, 2-1/C NO. 4 WITH MESSENGER WIRE	FOOT	1655					1655
82103900	LUMINAIRE, SODIUM VAPOR, MULTI-MOUNT, 250 WATT	EACH	9					9
82102250	LUMINAIRE, SODIUM VAPOR, HORIZONTAL MOUNT, 250 WATT	EACH	10	9	10	10	10	49
82500300	LIGHTING CONTROLLER, POLE MOUNTED, 240VOLT, 30AMP	EACH	1	1	1	1	1	4
82500310	LIGHTING CONTROLLER, POLE MOUNTED, 240VOLT, 60AMP	EACH	1					1
83003600	LIGHT POLE, ALUMINUM, 45 FT. 15 FT. DAVIT ARM	EACH	10	9	10	10	10	49
83600355	LIGHT POLE FOUNDATION METAL, 15" BOLT CIRCLE, 8" X 6"	EACH	10	9	10	10	10	49
83800650	BREAKAWAY DEVICE, COUPLING, WITH STAINLESS STEEL SCREEN	EACH	40	36	40	40	40	196

REMOVAL OF EXISTING LIGHTING UNIT, NO SALVAGE

LOCATION	84200600 NUMBER
US 51 771+50 LT	1
US 51 773+00 LT	1
US 51 774+50 LT	1
US 51 776+00 LT	1
US 51 777+50 LT	1
US 51 777+50 RT	1
US 51 779+00 RT	1
US 51 781+50 RT	1
TOTAL:	8

REVISED SHEET

REVISIONS	NAME	DATE
1	SEB	5/24/10

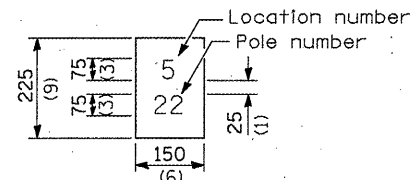
ILLINOIS DEPARTMENT OF TRANSPORTATION
 SCHEDULE OF QUANTITIES
 FINAL STRIPING & LIGHTING
 FAP 322 (US 51)
 SECTION 11-12
 CHRISTIAN COUNTY

SCALE: NONE DRAWN BY: SEB
 DATE: 8/22/06 CHECKED BY: TLD

5-25-10

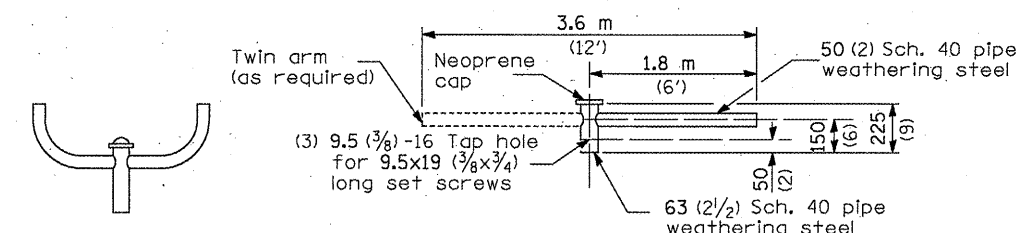
5/24/2010 10:02:30 AM

F.A.P. RTE.	SECTION	COUNTY	TOTAL SHEETS	SHEET NO.
322	11-12	CHRISTIAN	284	135a
STA.		TO STA.		
FED. ROAD DIST. NO.		ILLINOIS FED. AID PROJECT		



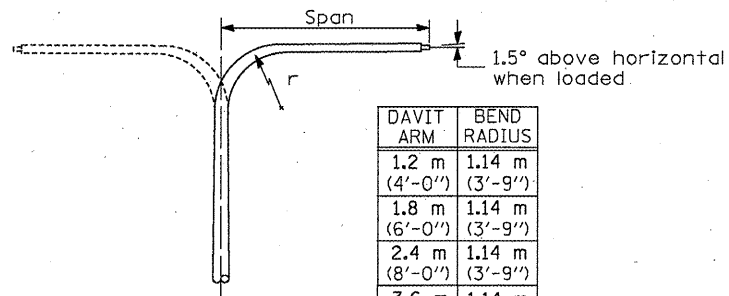
The contractor shall furnish and install a light pole identification of each new light pole, as shown above, incidental to the respective light pole pay item. The numerals shall be 75 (3) series "D", black, screened on silver-white type B pressure sensitive reflective sheeting conforming to the requirements of section T602.01 of the Standard Specifications for Traffic Control Items. The numerals shall conform to the FHWA "Standard Alphabets for Highway Signs".

The light pole identification shall be applied to sign base material as specified in section 1069.06 of the Standard Specifications, approximately 180 (7) above the adjacent pavement grade visible to approaching traffic in accordance with Highway Standard 720001.



TWIN TENON

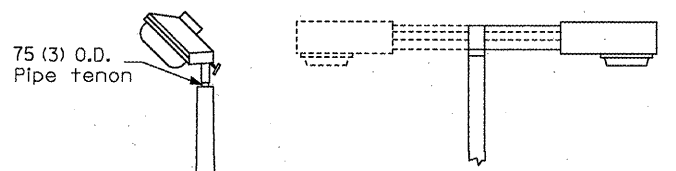
TENON MOUNT BRACKET ARM



DAVIT ARM	BEND RADIUS
1.2 m (4'-0")	1.14 m (3'-9")
1.8 m (6'-0")	1.14 m (3'-9")
2.4 m (8'-0")	1.14 m (3'-9")
3.6 m (12'-0")	1.14 m (3'-9")

DAVIT ARM

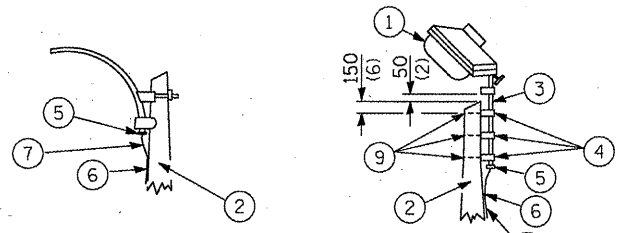
DAVIT ARM-TWIN



TENON

SHORT BRACKET

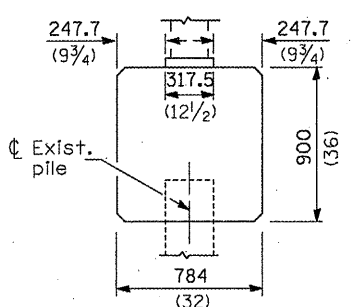
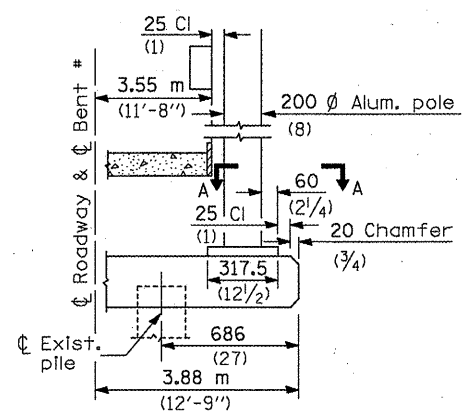
SHORT BRACKET - TWIN



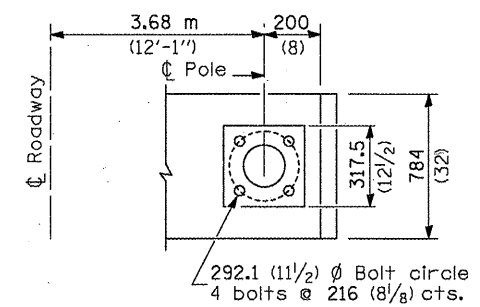
MAST ARM

TENON

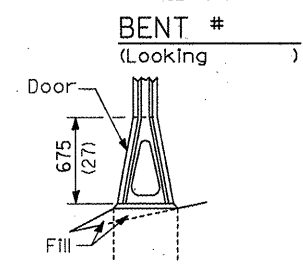
- ① Luminaire
- ② Wood pole, class 3 or better
- ③ 63 (2 1/2) Galv. steel conduit
- ④ Single offset pole band
- ⑤ Conduit bushing
- ⑥ Cable clamps on 600 (24) centers
- ⑦ 2/c #12 Type use cable
- ⑧ 25 (1) Galv. steel conduit 3.0 m (10') in length
- ⑨ 16 (3/8) Ø hot dipped galvanized bolt with flat washer & locknut (3 req'd)
- ⑩ Conduit clamps on 900 (36) centers
- ⑪ Unit duct
- ⑫ Threaded reducer
- ⑬ "C" Condulet, threaded
- ⑭ 40 (1 1/2) Galv. steel conduit for 1 unit duct or 75 (3) galv. steel conduit for 2 or 3 unit ducts.



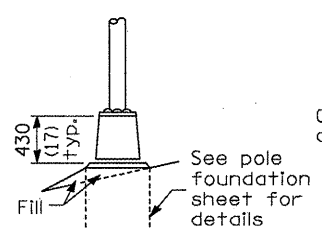
BRIDGE PIER MOUNT



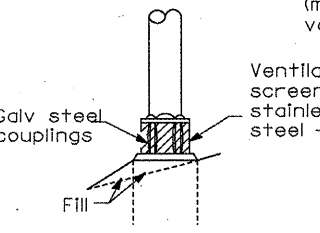
SECTION A-A



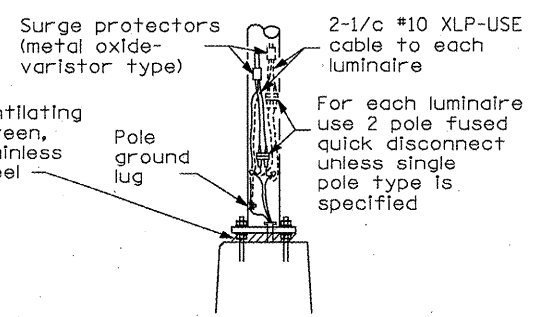
STAINLESS STEEL FLAIR BASE



TRANSFORMER BASE



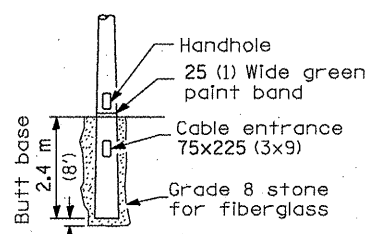
BREAKAWAY COUPLING



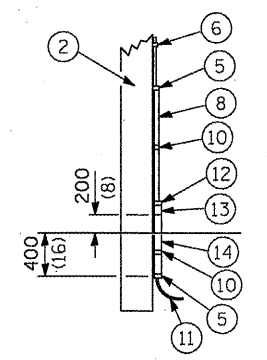
ANCHOR

METAL OR CONCRETE

Details for underground distribution if required



BUTT BASE



POLE, WOOD

POLE LENGTH	DEPTH IN GROUND
19.8 m (65')	3.6 m (12')
18.0 m (60')	3.0 m (10')
16.8 m (55')	2.7 m (9')
16.0 m (50')	2.4 m (8')
13.7 m (45')	2.1 m (7')
12.0 m (40')	2.0 m (6.5')
10.7 m (35')	1.8 m (6')
9.0 m (30')	1.7 m (5.5')

POLE STANDARDS

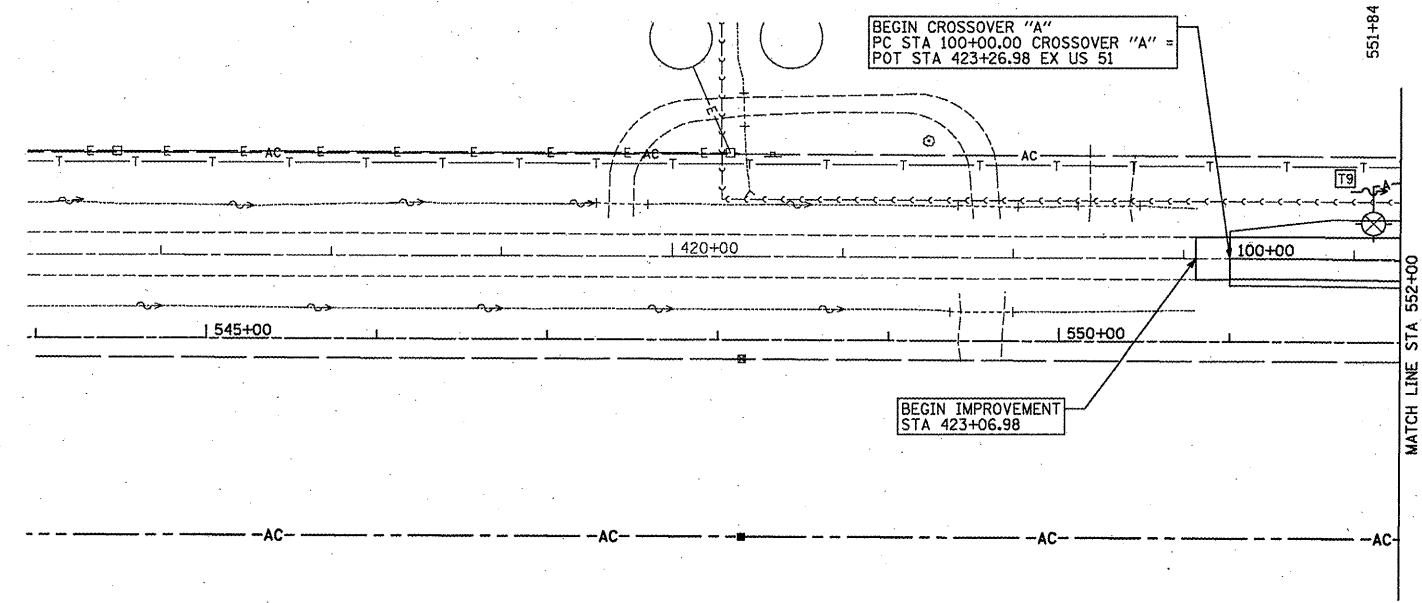
REVISIONS	
NAME	DATE
SEB	5/21/10

ILLINOIS DEPARTMENT OF TRANSPORTATION
LIGHTING PLAN -
LIGHTING DETAILS 3a OF 5
FAP 322 (US 51)
SECTION 11-12
CHRISTIAN COUNTY

SCALE: NONE DRAWN BY IDOT
DATE: CHECKED BY

REVISED SHEET

F.A.P. RTE.	SECTION	COUNTY	TOTAL SHEETS	SHEET NO.
322	11-12	CHRISTIAN	284	138
STA.		TO STA.		
FED. ROAD DIST. NO.		ILLINOIS FED. AID PROJECT		



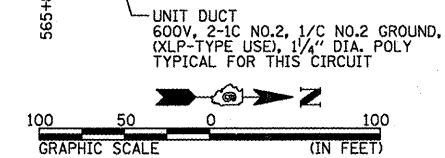
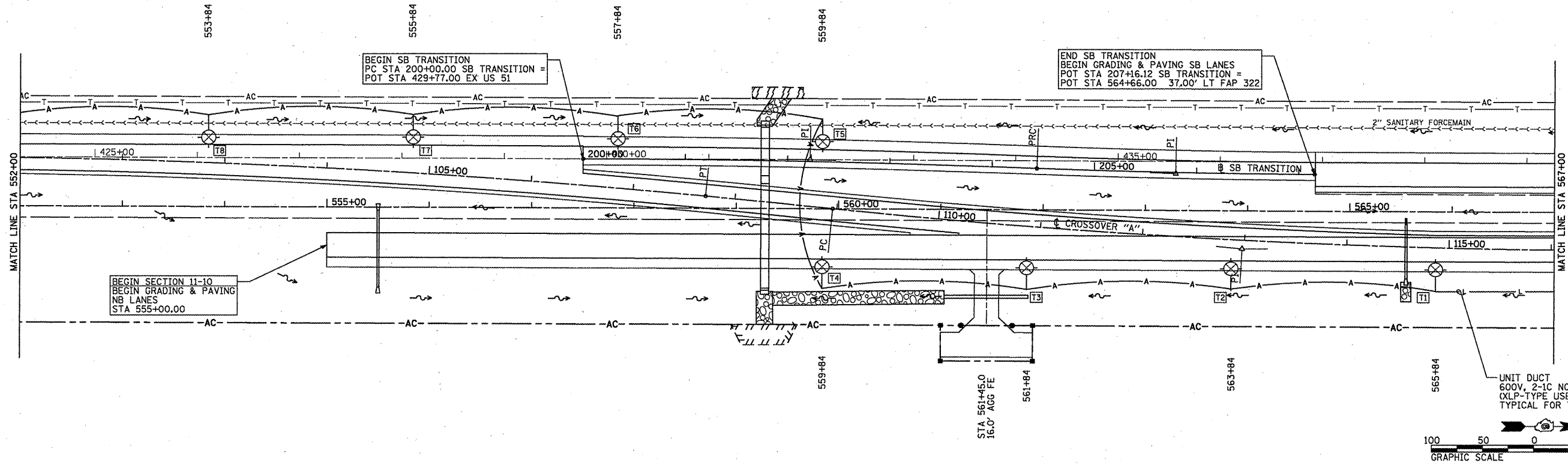
- NOTES:**
- WOOD POLES TO BE SET BACK 30' FROM EDGE OF PAVEMENT UNLESS THIS DISTANCE FALLS IN THE FLOW LINE OF THE DITCH. IN THAT CASE MOVE FURTHER BACK OUT OF THE FLOW LINE OR AS DIRECTED BY THE ENGINEER.
 - SEAL UNIT DUCT AT TOP OF POLE T1 TO KEEP MOISTURE OUT.
 - WHERE UNDERGROUND CABLE IS SPLICED TO AERIAL, KEEP ALUMINUM OVER COPPER.
 - PROTECT THE VERTICAL RUN OF UNIT DUCT ON POLE T1 WITH STEEL U-GUARD.

- LEGEND**
- WOOD LIGHTING POLE, 50' CLASS 3 WITH 250 WATT HPS MULTI MOUNT LUMINAIRE.
 - UNIT DUCT (AS NOTED)
 - AERIAL CABLE, 2-1/4" #4, ALUMINUM WITH MESSENGER WIRE

PERFORMANCE REQUIREMENTS

NOTE: These performance requirements shall be the minimum acceptable standards of photometric performance for the luminaire.

ILLUMINATION: Average Horizontal Illumination, (Eave)	9.0 Lux
Uniformity Ratio, (Eave/Emin)	3.0
LUMINANCE: Average Luminance, (Lave)	0.6 Cd/sq m
Uniformity Ratios: (Lave/Lmin)	3.5
(Lmax/Lmin)	6.0
Maximum Veiling Luminance Ratio: (Lv/Lave)	0.3



REVISED SHEET

REVISIONS

NAME	DATE
SEB	5/21/10

ILLINOIS DEPARTMENT OF TRANSPORTATION
 LIGHTING PLAN -
 CROSSOVER "A"
 FAP 322 (US 51)
 SECTION 11-12
 CHRISTIAN COUNTY

SCALE: 1"=50'
 DATE: 8/22/06

DRAWN BY: SEB
 CHECKED BY: TLD

5-25-10

F.A.P. RTE.	SECTION	COUNTY	TOTAL SHEETS	SHEET NO.
322	11-12	CHRISTIAN	284	139
STA. 322		TO STA. 322		
FED. ROAD DIST. NO.		ILLINOIS FED. AID PROJECT		

PERFORMANCE REQUIREMENTS

NOTE: These performance requirements shall be the minimum acceptable standards of photometric performance for the luminaire.

ILLUMINATION: Average Horizontal Illumination, (Eave) 9.0 Lux
 Uniformity Ratio, (Eave/Emin) 3.0

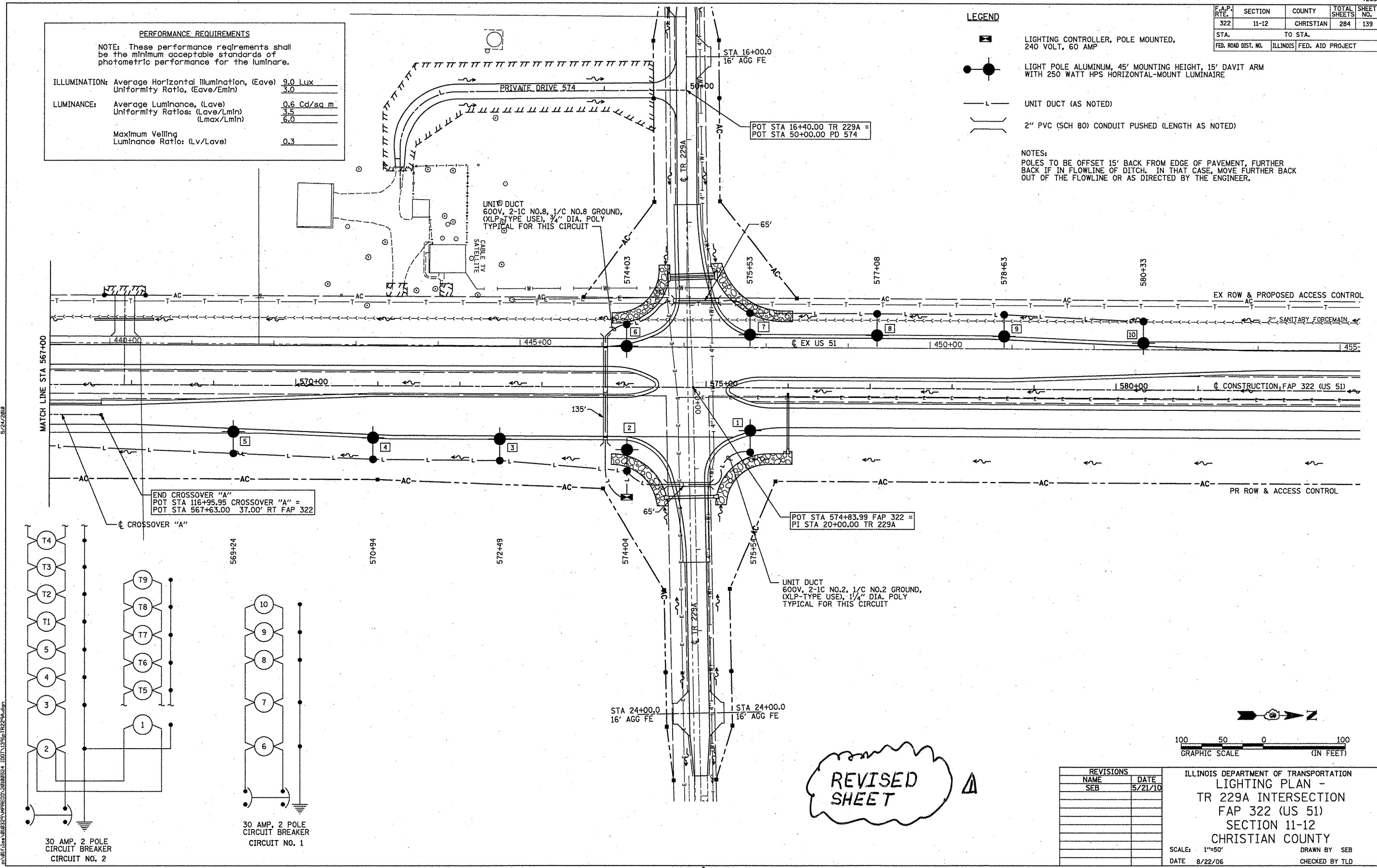
LUMINANCE: Average Luminance, (Lave) 0.6 Cd/sq. m
 Uniformity Ratios: (Lave/Lmin) 3.5
 (Lmax/Lmin) 6.0

Maximum Veiling Luminance Ratio: (Lv/Lave) 0.3

LEGEND

- LIGHTING CONTROLLER, POLE MOUNTED, 240 VOLT, 60 AMP
- LIGHT POLE ALUMINUM, 45' MOUNTING HEIGHT, 15' DAVIT ARM WITH 250 WATT HPS HORIZONTAL-MOUNT LUMINAIRE
- UNIT DUCT (AS NOTED)
- 2" PVC (SCH 80) CONDUIT PUSHED (LENGTH AS NOTED)

NOTES:
 POLES TO BE OFFSET 15' BACK FROM EDGE OF PAVEMENT, FURTHER BACK IF IN FLOWLINE OF DITCH. IN THAT CASE, MOVE FURTHER BACK OUT OF THE FLOWLINE OR AS DIRECTED BY THE ENGINEER.

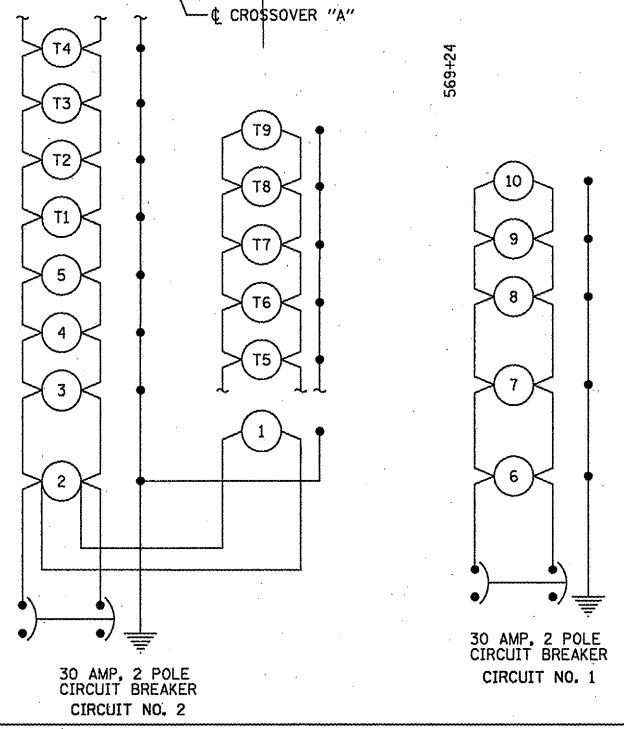


END CROSSOVER "A"
 POT STA 116+95.95 CROSSOVER "A" =
 POT STA 567+63.00 37.00' RT FAP 322

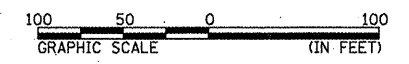
POT STA 574+83.99 FAP 322 =
 PI STA 20+00.00 TR 229A

UNIT DUCT
 600V, 2-1C NO.2, 1/C NO.2 GROUND,
 OXLP-TYPE USE, 1/4" DIA. POLY
 TYPICAL FOR THIS CIRCUIT

UNIT DUCT
 600V, 2-1C NO.8, 1/C NO.8 GROUND,
 (XLP-TYPE USE), 3/4" DIA. POLY
 TYPICAL FOR THIS CIRCUIT



REVISED SHEET



REVISIONS	
NAME	DATE
SEB	5/21/10

ILLINOIS DEPARTMENT OF TRANSPORTATION
 LIGHTING PLAN -
 TR 229A INTERSECTION
 FAP 322 (US 51)
 SECTION 11-12
 CHRISTIAN COUNTY

SCALE: 1"=50'
 DATE: 8/22/06

DRAWN BY: SEB
 CHECKED BY: TLD

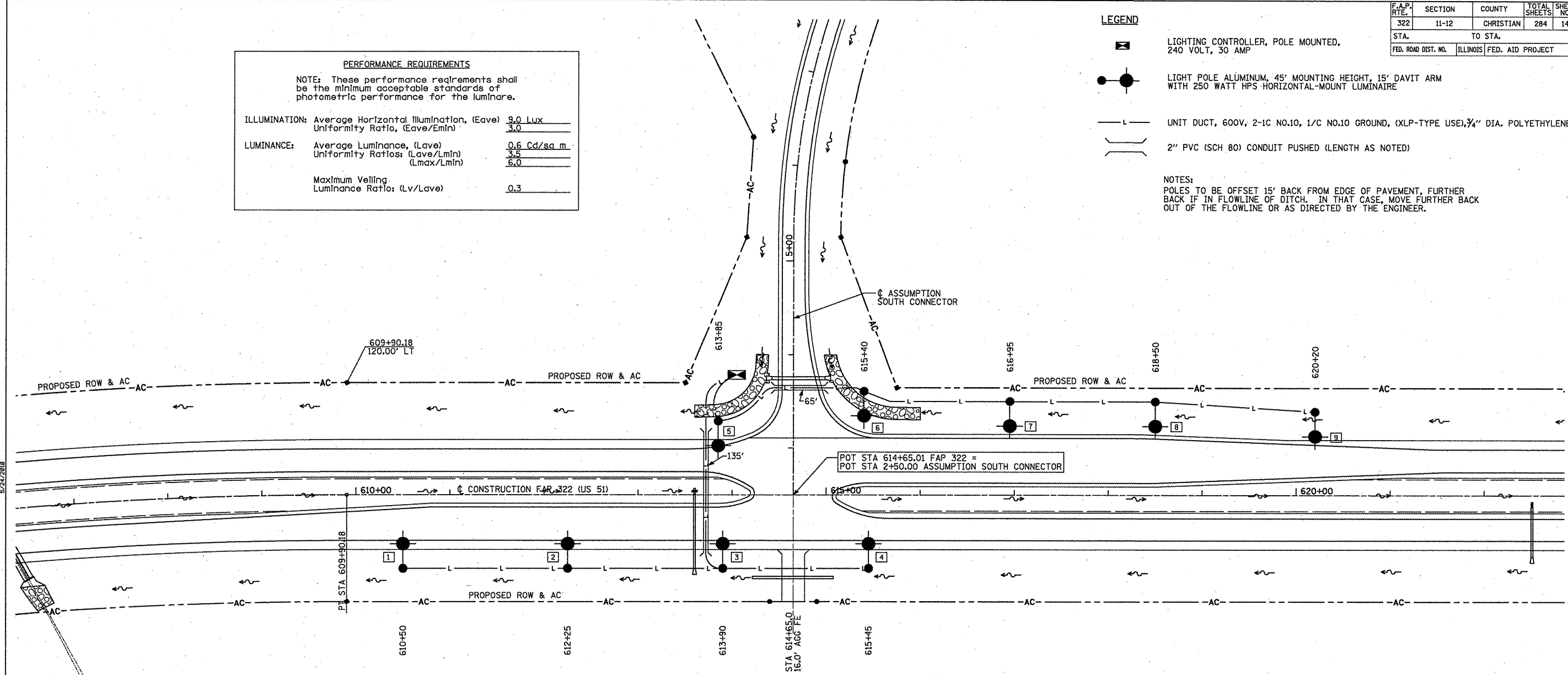
F.A.P. NO.	SECTION	COUNTY	TOTAL SHEETS	SHEET NO.
322	11-12	CHRISTIAN	284	140
STA.		TO STA.		
FED. ROAD DIST. NO.		ILLINOIS FED. AID PROJECT		

PERFORMANCE REQUIREMENTS	
NOTE: These performance requirements shall be the minimum acceptable standards of photometric performance for the luminaire.	
ILLUMINATION: Average Horizontal Illumination, (Eave)	9.0 Lux
Uniformity Ratio, (Eave/Emin)	3.0
LUMINANCE: Average Luminance, (Lave)	0.6 Cd/sq.m.
Uniformity Ratios: (Lave/Lmin)	3.5
(Lmax/Lmin)	6.0
Maximum Veiling Luminance Ratio: (Lv/Lave)	0.3

LEGEND

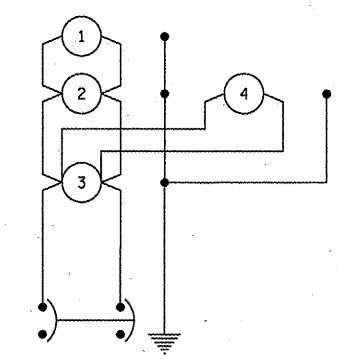
- LIGHTING CONTROLLER, POLE MOUNTED, 240 VOLT, 30 AMP
- LIGHT POLE ALUMINUM, 45' MOUNTING HEIGHT, 15' DAVIT ARM WITH 250 WATT HPS HORIZONTAL-MOUNT LUMINAIRE
- UNIT DUCT, 600V, 2-1C NO.10, 1/C NO.10 GROUND, (XLP-TYPE USE), 3/4" DIA. POLYETHYLENE
- 2" PVC (SCH 80) CONDUIT PUSHED (LENGTH AS NOTED)

NOTES:
POLES TO BE OFFSET 15' BACK FROM EDGE OF PAVEMENT, FURTHER BACK IF IN FLOWLINE OF DITCH. IN THAT CASE, MOVE FURTHER BACK OUT OF THE FLOWLINE OR AS DIRECTED BY THE ENGINEER.

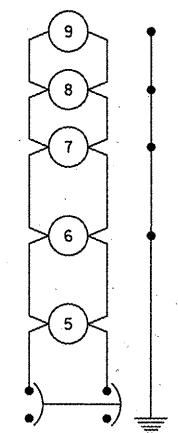


FAP 322 (US 51) CURVE *MI DATA:
 PI STA = 600+54.42
 Δ = 25° 22' 36" (RT)
 D = 1° 20' 00"
 R = 4,297.18'
 T = 967.49'
 L = 1,903.25'
 E = 107.57'
 SE = 4.2%
 PC STA = 590+86.93
 PT STA = 609+90.18
 SE ATTAINED STA 589+20 TO STA 591+50
 (TR STA 589+20 TO STA 589+61)
 SE REMOVED STA 609+27 TO STA 611+57
 (TR STA 611+16 TO STA 611+57)

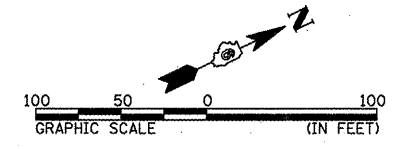
REVISED SHEET



20 AMP, 2 POLE CIRCUIT BREAKER
CIRCUIT NO. 1



20 AMP, 2 POLE CIRCUIT BREAKER
CIRCUIT NO. 2



REVISIONS	
NAME	DATE
SEB	5/24/10

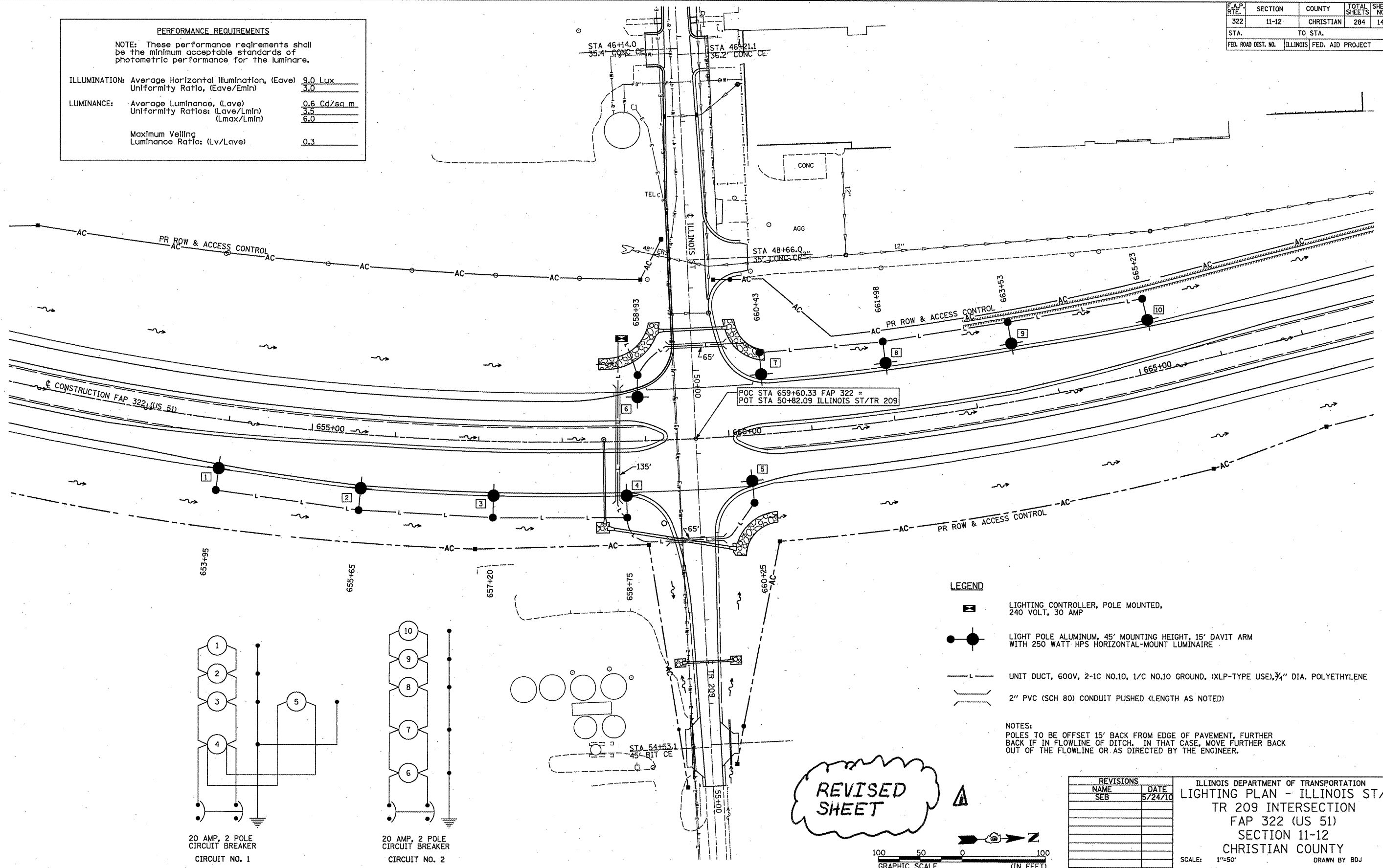
ILLINOIS DEPARTMENT OF TRANSPORTATION
 LIGHTING PLAN - ASSUMPTION
 SOUTH CONNECTOR INTERSECTION
 FAP 322 (US 51)
 SECTION 11-12
 CHRISTIAN COUNTY
 SCALE: 1"=50'
 DATE: 8/22/06
 DRAWN BY: BDJ
 CHECKED BY: TLD

F.A.P. RITE	SECTION	COUNTY	TOTAL SHEETS	SHEET NO.
322	11-12	CHRISTIAN	284	141
STA.		TO STA.		
FED. ROAD DIST. NO.		ILLINOIS FED. AID PROJECT		

PERFORMANCE REQUIREMENTS

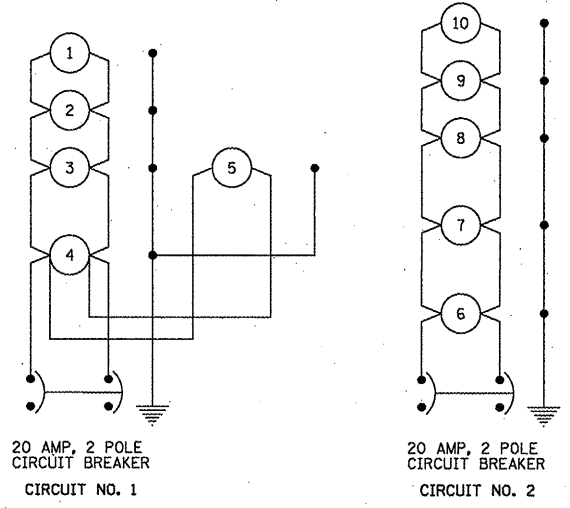
NOTE: These performance requirements shall be the minimum acceptable standards of photometric performance for the luminaire.

ILLUMINATION: Average Horizontal Illumination, (Eave)	9.0 Lux
Uniformity Ratio, (Eave/Emin)	3.0
LUMINANCE: Average Luminance, (Lave)	0.6 Cd/sq m
Uniformity Ratios: (Lave/Lmin)	3.5
(Lmax/Lmin)	6.0
Maximum Veiling Luminance Ratio: (Lv/Lave)	0.3



- LEGEND**
- LIGHTING CONTROLLER, POLE MOUNTED, 240 VOLT, 30 AMP
 - LIGHT POLE ALUMINUM, 45' MOUNTING HEIGHT, 15' DAVIT ARM WITH 250 WATT HPS HORIZONTAL-MOUNT LUMINAIRE
 - UNIT DUCT, 600V, 2-1C NO.10, 1/C NO.10 GROUND, (XLP-TYPE USE), 3/4" DIA. POLYETHYLENE
 - 2" PVC (SCH 80) CONDUIT PUSHED (LENGTH AS NOTED)

NOTES:
 POLES TO BE OFFSET 15' BACK FROM EDGE OF PAVEMENT, FURTHER BACK IF IN FLOWLINE OF DITCH. IN THAT CASE, MOVE FURTHER BACK OUT OF THE FLOWLINE OR AS DIRECTED BY THE ENGINEER.



REVISED SHEET



REVISIONS	
NAME	DATE
SEB	5/24/10

ILLINOIS DEPARTMENT OF TRANSPORTATION
 LIGHTING PLAN - ILLINOIS ST/
 TR 209 INTERSECTION
 FAP 322 (US 51)
 SECTION 11-12
 CHRISTIAN COUNTY

SCALE: 1"=50'
 DATE: 8/22/06
 DRAWN BY: BDJ
 CHECKED BY: TLD

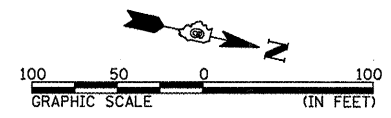
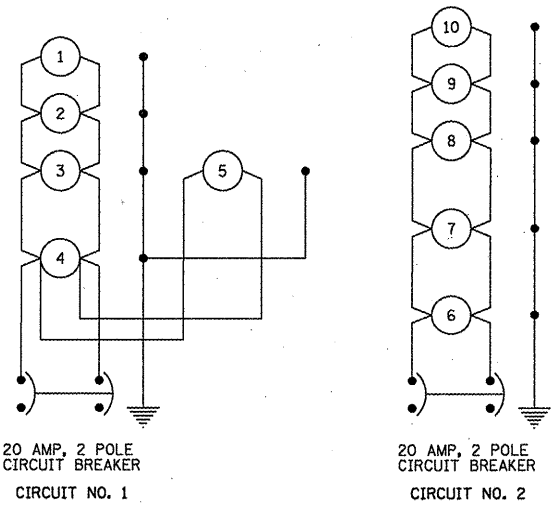
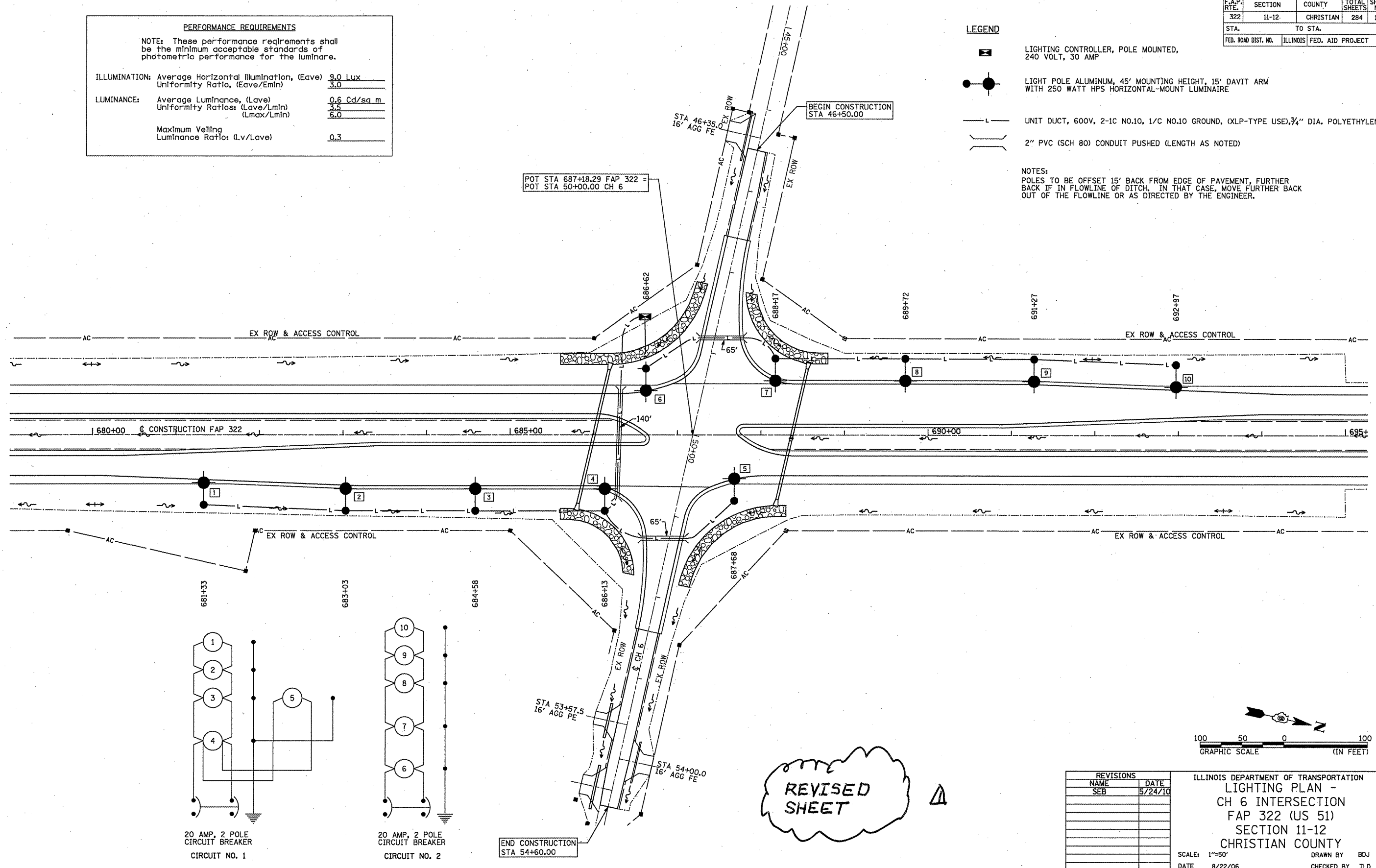
5-25-10

PERFORMANCE REQUIREMENTS	
NOTE: These performance requirements shall be the minimum acceptable standards of photometric performance for the luminaire.	
ILLUMINATION: Average Horizontal Illumination, (Eave)	9.0 Lux
Uniformity Ratio, (Eave/Emin)	3.0
LUMINANCE: Average Luminance, (Lave)	0.6 Cd/sq m
Uniformity Ratios: (Lave/Lmin)	3.5
(Lmax/Lmin)	6.0
Maximum Veiling Luminance Ratio: (Lv/Lave)	0.3

F.A.P. RTE.	SECTION	COUNTY	TOTAL SHEETS	SHEET NO.
322	11-12	CHRISTIAN	284	142
STA.	TO STA.			
FED. ROAD DIST. NO.	ILLINOIS	FED. AID PROJECT		

- LEGEND**
- LIGHTING CONTROLLER, POLE MOUNTED, 240 VOLT, 30 AMP
 - LIGHT POLE ALUMINUM, 45' MOUNTING HEIGHT, 15' DAVIT ARM WITH 250 WATT HPS HORIZONTAL-MOUNT LUMINAIRE
 - UNIT DUCT, 600V, 2-1C NO.10, 1/C NO.10 GROUND, (XLP-TYPE USE), 3/4" DIA. POLYETHYLENE
 - 2" PVC (SCH 80) CONDUIT PUSHED (LENGTH AS NOTED)

NOTES:
 POLES TO BE OFFSET 15' BACK FROM EDGE OF PAVEMENT, FURTHER BACK IF IN FLOWLINE OF DITCH. IN THAT CASE, MOVE FURTHER BACK OUT OF THE FLOWLINE OR AS DIRECTED BY THE ENGINEER.



REVISIONS	
NAME	DATE
SEB	5/24/10

ILLINOIS DEPARTMENT OF TRANSPORTATION
 LIGHTING PLAN -
 CH 6 INTERSECTION
 FAP 322 (US 51)
 SECTION 11-12
 CHRISTIAN COUNTY
 SCALE: 1"=50'
 DATE: 8/22/06
 DRAWN BY: BDJ
 CHECKED BY: TLD

5-25-10

5/24/2010

F:\PROJECTS\11-12\11-12\11-12-142.dwg

F.A.P. RTE.	SECTION	COUNTY	TOTAL SHEETS	SHEET NO.
322	11-12	CHRISTIAN	284	143
STA.		TO STA.		
FED. ROAD DIST. NO.		ILLINOIS FED. AID PROJECT		

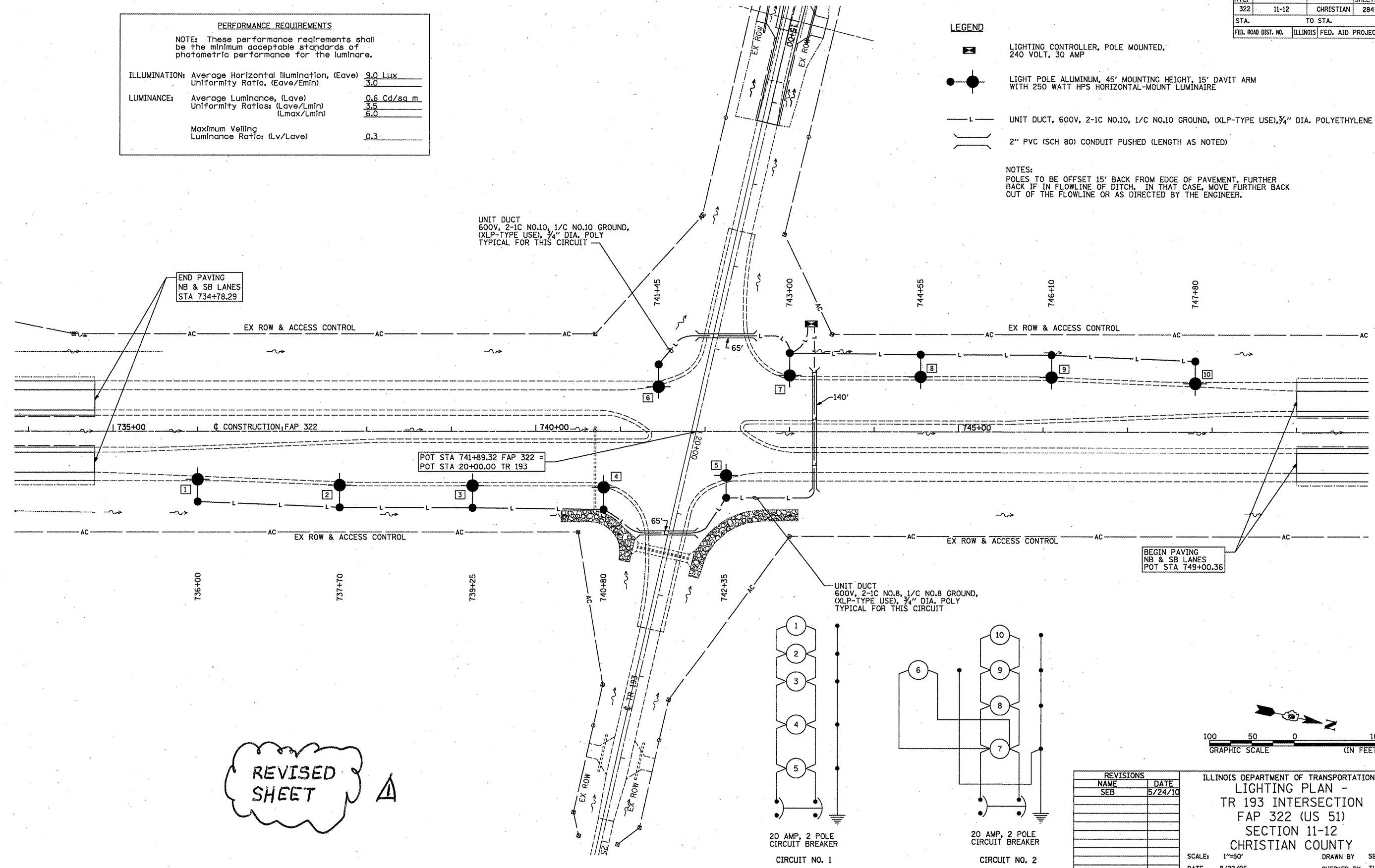
PERFORMANCE REQUIREMENTS

NOTE: These performance requirements shall be the minimum acceptable standards of photometric performance for the luminaire.

ILLUMINATION: Average Horizontal Illumination, (Eave)	9.0 Lux
Uniformity Ratio, (Eave/Emin)	3.0
LUMINANCE: Average Luminance, (Lave)	0.6 Cd/sq m
Uniformity Ratios: (Lave/Lmin)	3.5
(Lmax/Lmin)	6.0
Maximum Veiling Luminance Ratio: (Lv/Lave)	0.3

- LEGEND**
- LIGHTING CONTROLLER, POLE MOUNTED, 240 VOLT, 30 AMP
 - LIGHT POLE ALUMINUM, 45' MOUNTING HEIGHT, 15' DAVIT ARM WITH 250 WATT HPS HORIZONTAL-MOUNT LUMINAIRE
 - UNIT DUCT, 600V, 2-1C NO.10, 1/C NO.10 GROUND, (XLP-TYPE USE), 3/4" DIA. POLYETHYLENE
 - 2" PVC (SCH 80) CONDUIT PUSHED (LENGTH AS NOTED)

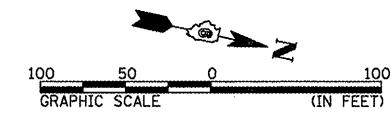
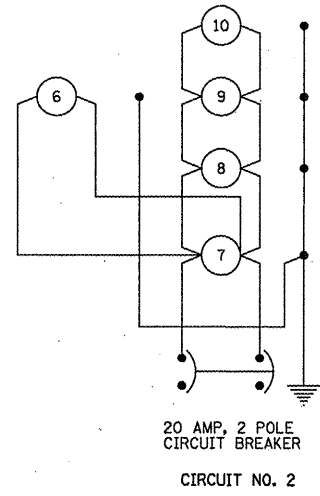
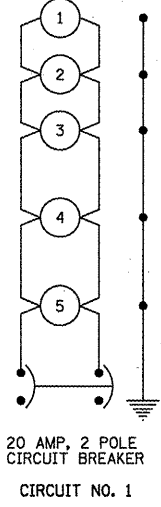
NOTES:
 POLES TO BE OFFSET 15' BACK FROM EDGE OF PAVEMENT, FURTHER BACK IF IN FLOWLINE OF DITCH. IN THAT CASE, MOVE FURTHER BACK OUT OF THE FLOWLINE OR AS DIRECTED BY THE ENGINEER.



BEGIN PAVING NB & SB LANES POT STA 749+00.36

POT STA 741+89.32 FAP 322 = POT STA 20+00.00 TR 193

END PAVING NB & SB LANES STA 734+78.29



REVISIONS	
NAME	DATE
SEB	5/24/10

ILLINOIS DEPARTMENT OF TRANSPORTATION
 LIGHTING PLAN -
 TR 193 INTERSECTION
 FAP 322 (US 51)
 SECTION 11-12
 CHRISTIAN COUNTY

SCALE: 1"=50'
 DATE: 8/22/06

DRAWN BY: SEB
 CHECKED BY: TLD

5-25-10