

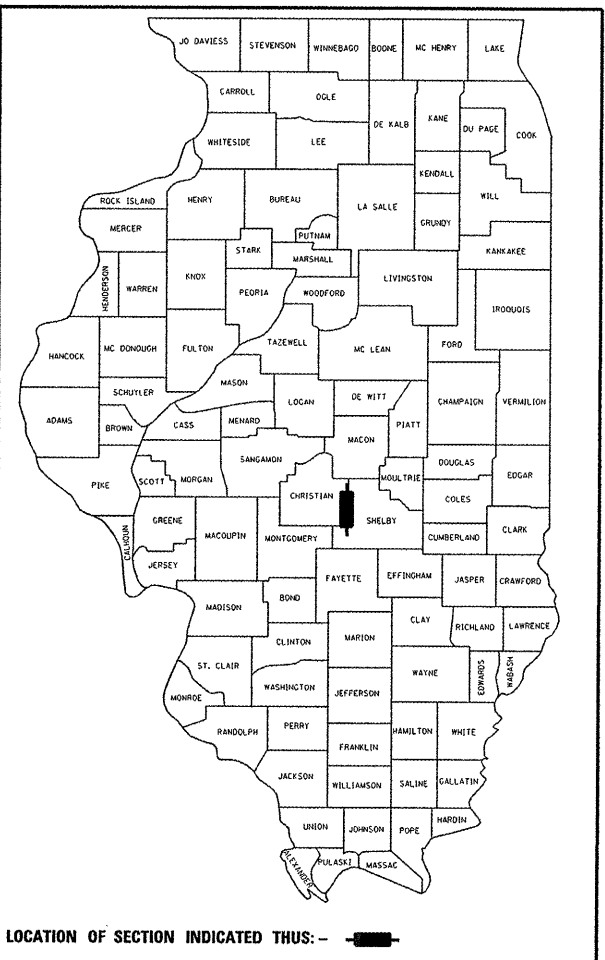
p:\01files\0103229\MFREDO\001cover.dgn

F.A.P. RTE.	SECTION	COUNTY	TOTAL SHEETS	SHEET NO.
322	11-12	CHRISTIAN	284	1

CONTRACT # 72932

STATE OF ILLINOIS
DEPARTMENT OF TRANSPORTATION
DIVISION OF HIGHWAYS

D-96-550-04



LOCATION OF SECTION INDICATED THUS: -

STATE OF ILLINOIS
DEPARTMENT OF TRANSPORTATION
DIVISION OF HIGHWAYS

SUBMITTED March 26 20 10
Roy D. Dakin
DEPUTY DIRECTOR OF HIGHWAYS, REGION ENGINEER

May 7 20 10
Scott E. Still, P.E. / e
acting ENGINEER OF DESIGN AND ENVIRONMENT

May 7 20 10
Christine M. Reed / e
DIRECTOR OF HIGHWAYS, CHIEF ENGINEER



Steve E. Bange 3/10/2010
DATE
STEVE E. BANGE
REGISTERED PROFESSIONAL ENGINEER
STATE OF ILLINOIS NO. 062-053338
LICENSE EXPIRES NOVEMBER 30, 2011

PLANS PREPARED BY:
KLINGNER & ASSOCIATES, P.C.
Engineers / Architects
616 North 24th Street (217) 223-3670
Quincy, Illinois 62301 FAX: 223-3603
Internet Address: www.klingner.com
STATE OF ILLINOIS DESIGN FIRM # 1842738

PRINTED BY THE AUTHORITY OF THE STATE OF ILLINOIS

FOR INDEX OF SHEETS, SEE SHEET NO. 2

**PROPOSED
HIGHWAY PLANS**

FAP ROUTE 322 (US 51)
SECTION 11-12
PROJECT ACNHF-HPP-0322(092)
FOUR LANE EXPRESSWAY - PARTIAL ACCESS CONTROL
CHRISTIAN COUNTY
C-96-501-08

DESIGN DESIGNATION:

FAP 322 (ARTERIAL)
ADT = 4,650 (2003)
% SU = 3
% MU = 10

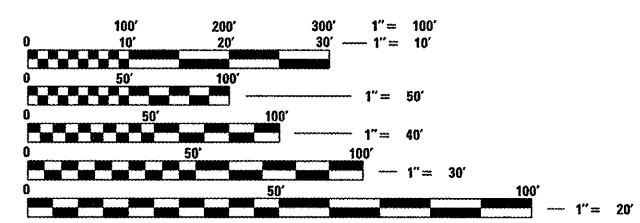
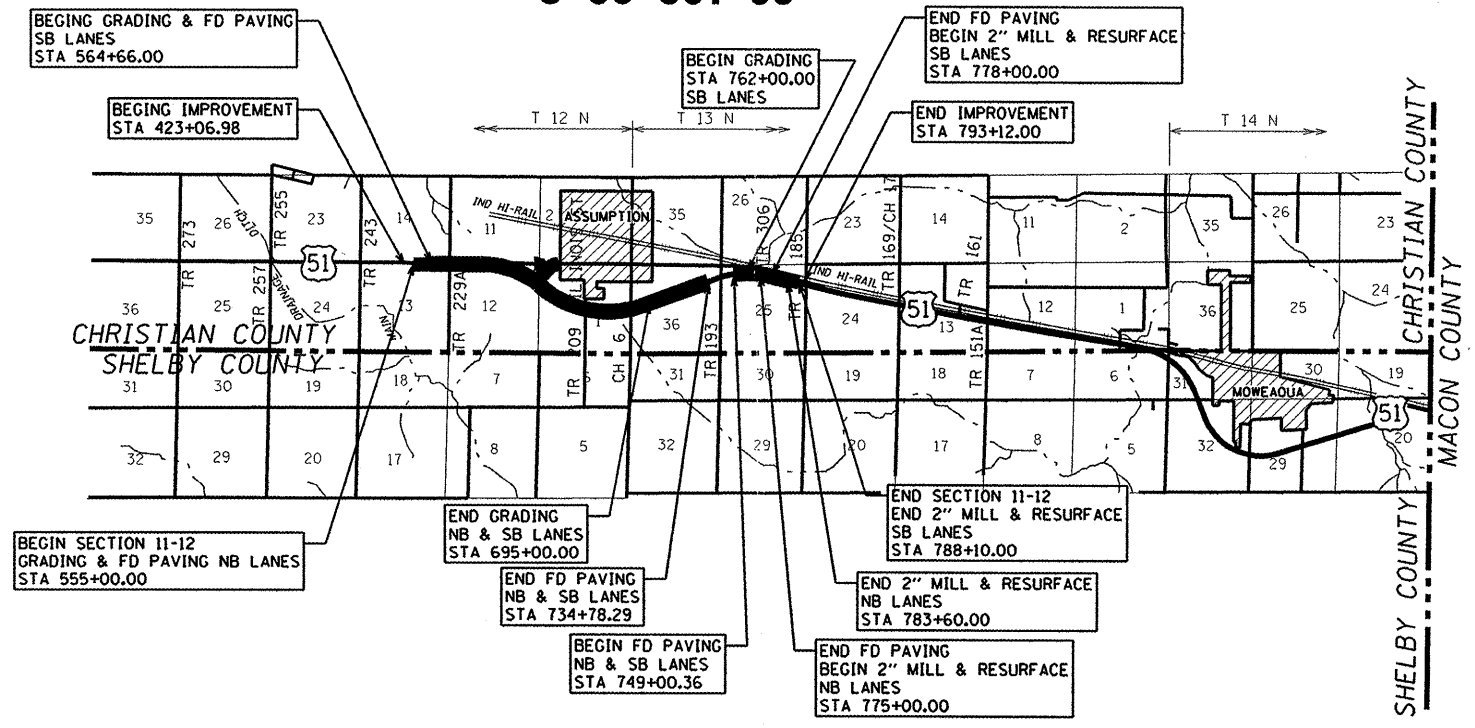
TR 229A (COLLECTOR)
ADT = 125 (2003)

ILLINOIS ST (COLLECTOR)
ADT = 1900 (2005)

TR 209 (COLLECTOR)
ADT = 200 (2005)

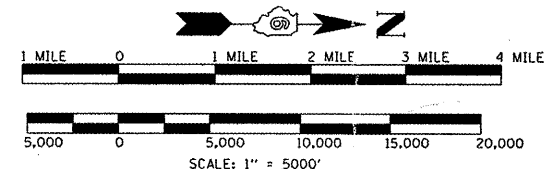
CH 6 (COLLECTOR)
ADT = 1450 (2005)

TR 193 (COLLECTOR)
ADT = 125 (2003)



FULL SIZE PLANS HAVE BEEN PREPARED USING STANDARD ENGINEERING SCALES, REDUCED SIZED PLANS WILL NOT CONFORM TO STANDARD SCALES, IN MAKING MEASUREMENTS ON REDUCED PLANS, THE ABOVE SCALES MAY BE USED.

J.U.L.I.E.
JOINT UTILITY LOCATION INFORMATION FOR EXCAVATION
1-800-892-0123



LOCATION MAP

GROSS LENGTH OF SECTION 11-12 = 22,960 ft = 4.33 miles
NET LENGTH OF SECTION 11-12 = 21,438 ft = 4.06 miles

CONTRACT NO. 72932

PROJECT ENGINEER: SAN MAURONIA (217) 782-4161
SOILS LEADER: JEFF JAMES (217) 541-7930