

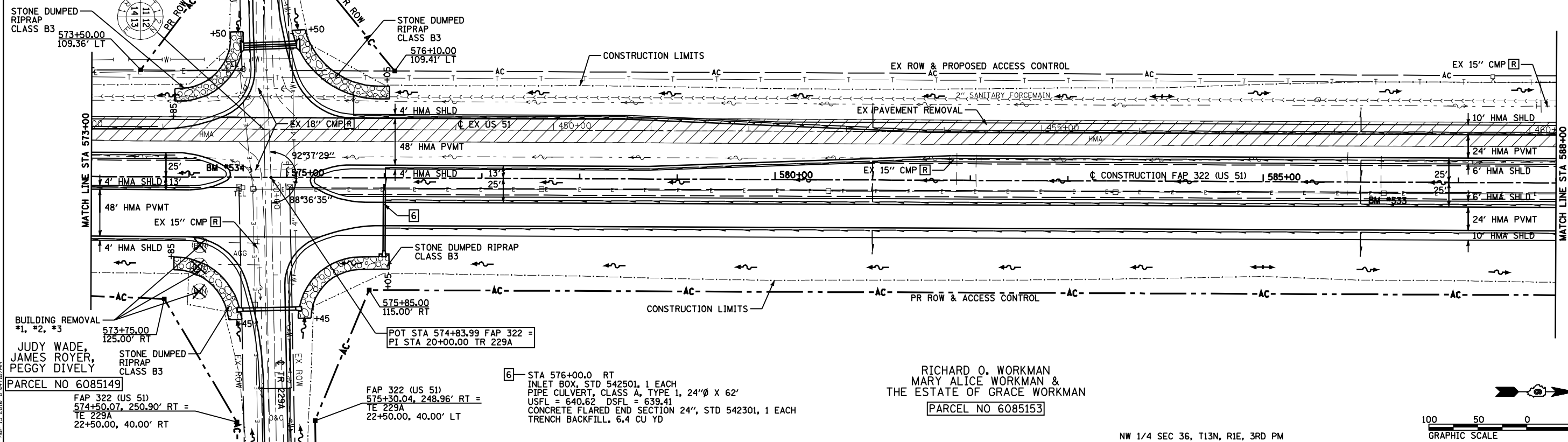
F.A.P. RTE.	SECTION	COUNTY	TOTAL SHEETS	SHEET NO.
322	11-12	CHRISTIAN	284	60
STA.	TO STA.			
FED. ROAD DIST. NO.	ILLINOIS FED. AID PROJECT			

JANEANE BARROR
HEATHER RENEE IRVINE
& HOLLI NICOLE BARROR
[PARCEL NO 6085151]

FAP 322 (US 51)
574+35.44, 224.21' LT =
TE 229A
17+75.00, 40.00' RT
[PARCEL NO 6085188]

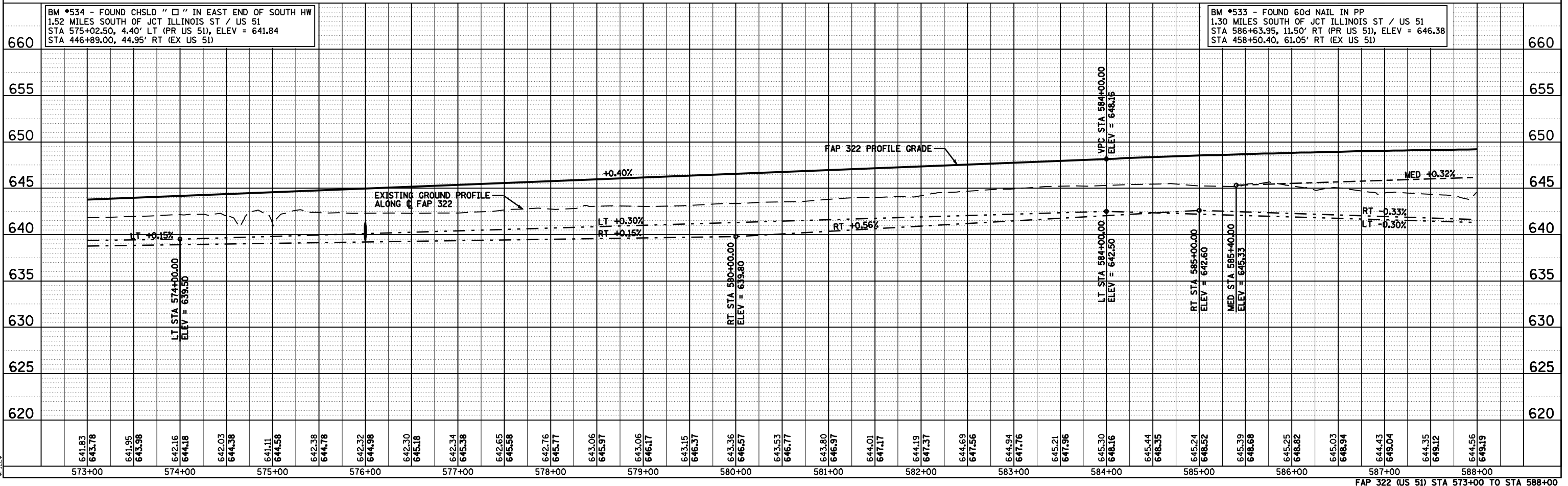
FAP 322 (US 51)
575+15.43, 225.44' LT =
TE 229A
17+75.00, 40.00' LT

SEE SHEET 101 FOR INTERSECTION DETAILS



DATE	BY	REVISION

DATE: 11-15-2018
BY: [Signature]

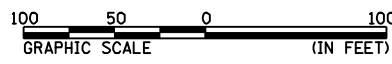


DATE	BY	REVISION

DATE: 11-15-2018
BY: [Signature]

BM #534 - FOUND CHSLD "□" IN EAST END OF SOUTH HW
1.52 MILES SOUTH OF JCT ILLINOIS ST / US 51
STA 575+02.50, 4.40' LT (PR US 51), ELEV = 641.84
STA 446+89.00, 44.95' RT (EX US 51)

BM #533 - FOUND 60d NAIL IN PP
1.30 MILES SOUTH OF JCT ILLINOIS ST / US 51
STA 586+63.95, 11.50' RT (PR US 51), ELEV = 646.38
STA 458+50.40, 61.05' RT (EX US 51)



NW 1/4 SEC 36, T13N, R1E, 3RD PM