

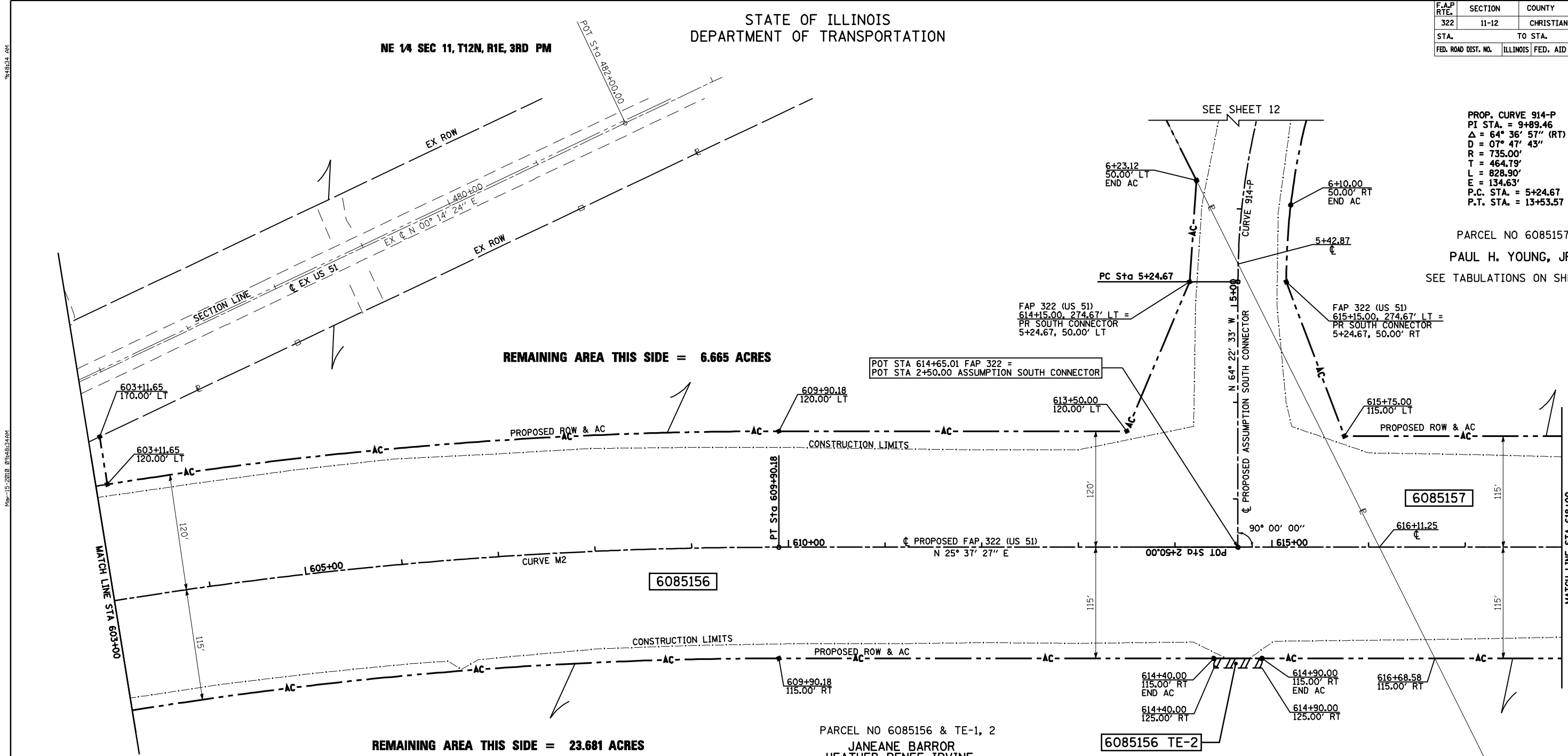
STATE OF ILLINOIS
DEPARTMENT OF TRANSPORTATION

F.A.P. RTE.	SECTION	COUNTY	TOTAL SHEETS	SHEET NO.
322	11-12	CHRISTIAN	284	90
STA.		TO STA.		
FED. ROAD DIST. NO.		ILLINOIS	FED. AID PROJECT	

NE 1/4 SEC 11, T12N, R1E, 3RD PM

PROP. CURVE 914-P
 PI STA. = 9+89.46
 Δ = 64° 36' 57" (RT)
 D = 07° 47' 43"
 R = 735.00'
 T = 464.79'
 L = 828.90'
 E = 134.63'
 P.C. STA. = 5+24.67
 P.T. STA. = 13+53.57

PARCEL NO 6085157
 PAUL H. YOUNG, JR.
 SEE TABULATIONS ON SHEET 6



PROP. CURVE M2
 PI STA. = 600+54.42
 Δ = 25° 22' 36" (RT)
 D = 01° 20' 00"
 R = 4,297.18'
 T = 967.49'
 L = 1,903.25'
 E = 107.57'
 P.C. STA. = 590+86.93
 P.T. STA. = 609+90.18

NW 1/4 SEC 12, T12N, R1E, 3RD PM

NOTES:
 BEARINGS ARE BASED ON THE ILLINOIS STATE PLANE
 COORDINATE SYSTEM. NAD83 1986 - WEST ZONE
 SURVEYED IN ENGLISH.

PLAT DISTANCES AND STATIONING ARE IN GRID ENGLISH.
 TO CONVERT TO GROUND DIVIDE BY GRID FACTOR.
 GRID FACTOR = 1.00003150

PARCEL NO 6085156 & TE-1, 2
 JANEANE BARROR
 HEATHER RENEE IRVINE,
 & HOLLI NICOLE BARROR
 TOTAL AREA = 38.826 ACRES
 REQUIRED ROW AREA = 8.480 ACRES
 EXISTING ROW AREA = 0.000 ACRES
 TOTAL ROW AREA = 8.480 ACRES
 REMAINING AREA = 30.346 ACRES
 TEMPORARY EASEMENT TE-1 = 0.022 ACRES
 T.E. PURPOSE: CONSTRUCT ENTRANCE
 TEMPORARY EASEMENT TE-2 = 0.011 ACRES
 T.E. PURPOSE: CONSTRUCT ENTRANCE

RIGHT OF WAY PLANS

ROUTE	F.A.P. 322 (US 51)
SECTION	11-1
PROJECT	
COUNTY	CHRISTIAN
JOB NO.	R-96-008-95
STA	603+00 TO STA 618+00
SCALE	1 = 50'

SHEET NO. 5 OF 14

