

STATE OF ILLINOIS
DEPARTMENT OF TRANSPORTATION

F.A.P. RTE.	SECTION	COUNTY	TOTAL SHEETS	SHEET NO.
322	11-12	CHRISTIAN	284	92
STA.		TO STA.		
FED. ROAD DIST. NO.	ILLINOIS	FED. AID PROJECT		

SW 1/4 SEC 1, T12N, R1E, 3RD PM

PARCEL NO 6085158
L. WILLIAM CORZINE, CARL C. CORZINE,
AND ROBERT D. CORZINE AS TRUSTEES
SEE TABULATIONS BELOW

PROP. CURVE M3
PI STA. = 655+98.31
Δ = 38° 03' 53" (LT)
D = 01° 54' 35"
R = 3,000.00'
T = 1,034.88'
L = 1,993.07'
E = 173.48'
P.C. STA. = 645+63.43
P.T. STA. = 665+56.50

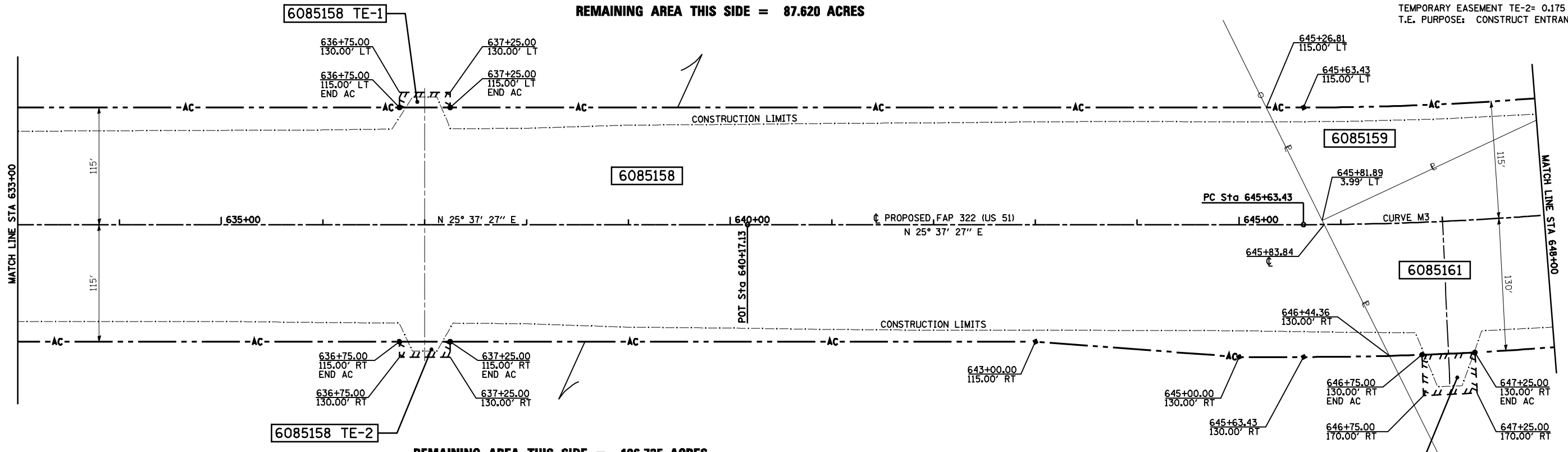
PARCEL NO 6085159, TE-1, 2
GSI GROUP, L.L.C.

TOTAL AREA = 50.289 ACRES
REQUIRED ROW AREA = 0.398 ACRES
EXISTING ROW AREA = 0.000 ACRES
TOTAL ROW AREA = 0.398 ACRES
REMAINING AREA = 49.891 ACRES

TEMPORARY EASEMENT TE-1 = 0.040 ACRES
T.E. PURPOSE: CONSTRUCT ENTRANCE

TEMPORARY EASEMENT TE-2 = 0.175 ACRES
T.E. PURPOSE: CONSTRUCT ENTRANCE

REMAINING AREA THIS SIDE = 87.620 ACRES



REMAINING AREA THIS SIDE = 106.735 ACRES

PARCEL NO 6085158
L. WILLIAM CORZINE, CARL C. CORZINE,
AND ROBERT D. CORZINE AS TRUSTEES

TOTAL AREA = 202.945 ACRES
REQUIRED ROW AREA = 8.590 ACRES
EXISTING ROW AREA = 0.000 ACRES
TOTAL ROW AREA = 8.590 ACRES
REMAINING AREA = 194.355 ACRES

TEMPORARY EASEMENT TE-1 = 0.017 ACRES
T.E. PURPOSE: CONSTRUCT ENTRANCE

TEMPORARY EASEMENT TE-2 = 0.017 ACRES
T.E. PURPOSE: CONSTRUCT ENTRANCE

PARCEL NO 6085161 & TE
THOMAS L. STRINGER et al
SEE TABULATIONS ON SHEET 8

SW 1/4 SEC 1, T12N, R1E, 3RD PM

NOTES:
BEARINGS ARE BASED ON THE ILLINOIS STATE PLANE
COORDINATE SYSTEM, NAD83 1986 - WEST ZONE
SURVEYED IN ENGLISH.

PLAT DISTANCES AND STATIONING ARE IN GRID ENGLISH.
TO CONVERT TO GROUND DIVIDE BY GRID FACTOR.
GRID FACTOR = 1.00003150

RIGHT OF WAY PLANS

ROUTE F.A.P. 322 (US 51)
SECTION 11-1
PROJECT
COUNTY CHRISTIAN
JOB NO. R-96-008-95
STA 633+00 TO STA 648+00
SCALE 1 = 50'

